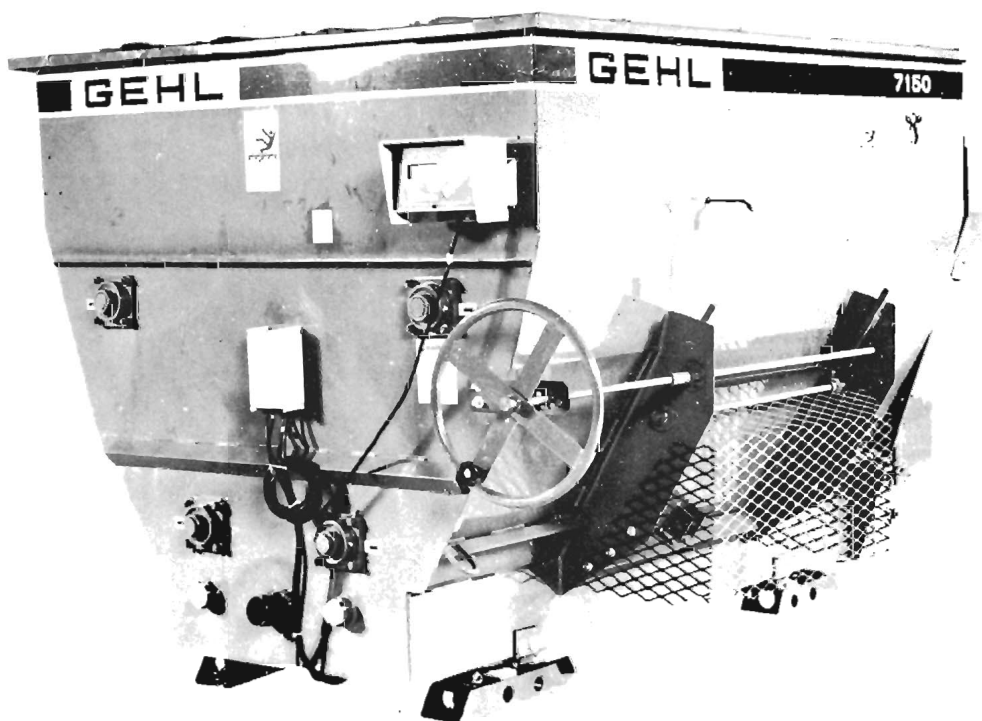


Form No.
906068

7150

Stationary Mixer Feeder



SERVICE PARTS MANUAL

GEHL[®] COMPANY

Introduction:

When ordering service parts, specify the correct part number, full description, quantity required, and the unit model and serial numbers. The Mixer Feeder model and serial numbers are on a plate located on the left side of the Main Frame at the front left corner.

"Right" and "Left" are determined from a position standing behind the unit. From this position, the Discharge Opening is on the "left" side.

GEHL® Company reserves the right to make changes or improvements in the design or construction of any part of the unit without incurring the obligation to install such changes on any previously delivered units.

The hardware listed is for mounting information and is NOT included with the replacement part. Refer to the following abbreviations table for fastener descriptions. In the Parts List, if a number precedes the abbreviation, the number represents either quantity required (if other than one per item) or size.

Unless otherwise specified, all Cap Screws or Bolts are Grade 5, cadmium or zinc plated; Hexagon Nuts for Grade 5 Screws or Bolts are Grade B; Hexagon Nuts for other Screws or Bolts are Grade A.

The following abbreviations are used in this Manual:

AR	- As Required
ASS'Y	- Assembly
ASM'D	- Assembled
CP	- Cone Point
CS	- Cap Screw (Hexagon Head)
DEG	- Degree
DIA.	- Diameter

FLN	- Flanged Lock Nut
FRT	- Front
FT-LB	- Foot-pounds (torque)
GR	- Grade
HD	- Hard or Heavy Duty
HEX	- Hexagon shaped
IN-LB	- Inch-pounds (torque)
JN	- Jam Nut
L or LW	- Lock (Washer)
LN	- Lock Nut (Hexagon)
LT (L.H.)	- Left
MM or mm	- Millimeter
MTG	- Mounting
N	- Nut (Hexagon)
NILN	- Nylon Insert Lock Nut
Nm	- Newton meter
No. or #	- Number
P	- Plain (Washer)
OD	- Outside Diameter
OPT	- Optional
RHMS	- Round Head Machine Screw
RHSQNB	- Round Head Square-neck Bolt
RT (R.H.)	- Right Hand
SHSS	- Socket Head Set Screw
SN	- Serial Number or Slotted Nut
STD	- Standard
T	- Tooth or Teeth
W/	- With
WN	- Wing Nut

TABLE OF CONTENTS

	Page
Introduction	Inside Front Cover
Table Of Contents	1
Decal Locations	2-3
Bottom Augers	4
Top Augers	5
Sealing Washers	6
Drive Mount Assembly	7
Drive Mount Sprockets & Idlers	8
Bottom Auger Clearance Adjustment	9
Top Auger Drive Sprockets	10
Top Auger Drive Chain Idlers	11
Drive Chains & Rear Shield	12
Discharge Door	13
Discharge Guard & Tank Pipes	14
Discharge Manual Control	15
Scale & Components	16
Drive Components	17
Planetary Gearcase	18
Optional Features & Accessories	19
Electric Discharge Door Control 805140	19
Numerical Index	20
Standard Hardware Torque Specifications	Inside Back Cover

DECAL LOCATIONS

GENERAL INFORMATION

Decal Locations information is provided to assist in the proper selection and application of new decals, in the event the original decal(s) become(s) damaged or the machine is repainted. Refer to the listing for the illustration reference number, part number, description and quantity of each decal provided in the Kit. Refer to the appropriate illustration(s) for replacement location(s).

NOTE: Refer to the SAFETY Chapter of the Operator's Manual for the specific information provided on all of the various Safety Decals furnished in the Decal Kit(s).

To ensure proper selection for correct replacement decal(s), compare all of the various closeup location photographs to your machine BEFORE starting to refinish the unit. Then, circle each pictured decal (applicable to your machine) while checking-off its part number in the listing. After you have verified all of the decal needed for replacement, set aside unneeded decals for disposal.

PAINT NOTICE

Use this list to order paint for refinishing:

901225	One Gallon Blaze Paint
901226	One Gallon Maize Paint
610239	6 (12 oz Spray Cans) Blaze Paint
610240	6 (12 oz Spray Cans) Maize Paint

NEW DECAL APPLICATION

Surfaces MUST be free from dirt, dust, grease and other foreign material before applying the new decal. To apply a solid-formed decal, remove the smaller portion of the decal backing paper and apply this part of the exposed adhesive backing to the clean surface while maintaining proper position and alignment. Slowly peel off the other portion of the backing paper while applying hand pressure to smooth-out the decal surface.

NOTE: For Stripe replacement, cut off appropriate length(s) from 4-1/2" high, 50 foot long roll of Striping, Part Number 090909.

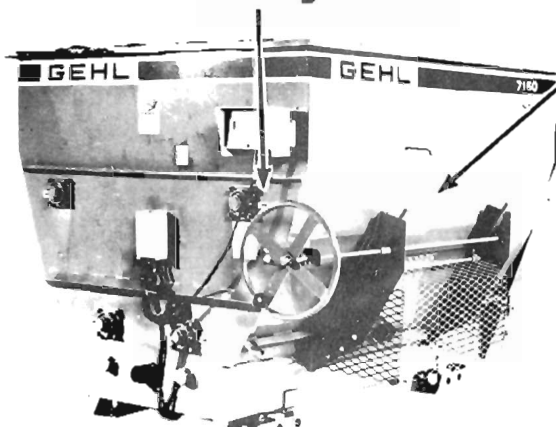
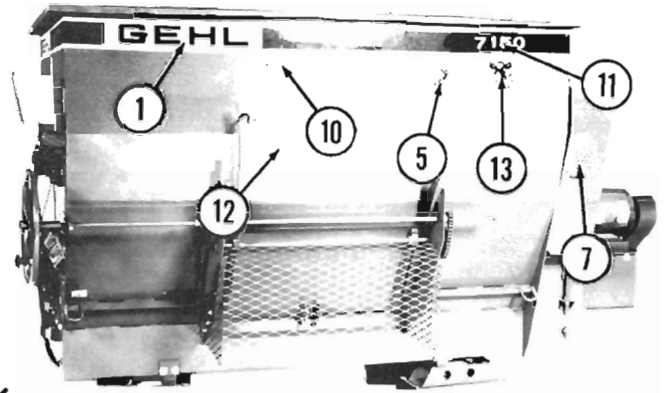
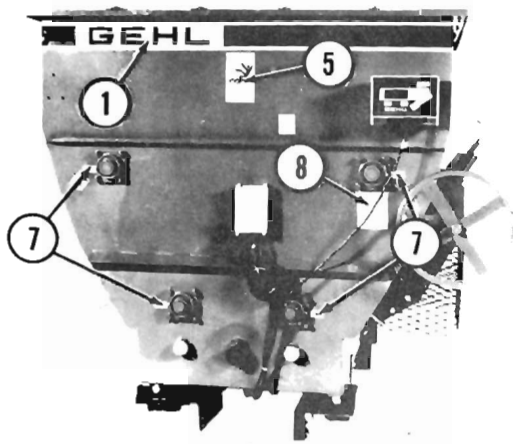


CAUTION

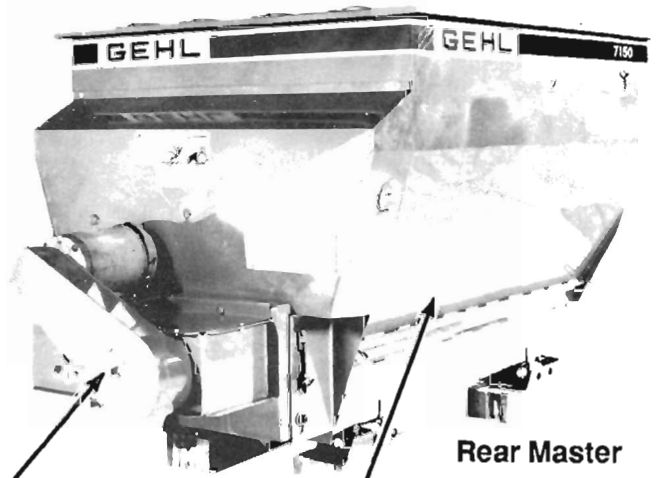
ALWAYS read and abide by the Safety Rules and Information shown on Decals. If Decal(s) become(s) damaged, unreadable or If the unit is repainted, the Decal(s) MUST be replaced. If repainting, MAKE SURE ALL Decals which apply to your machine are properly affixed to your unit in their proper locations.

The Decal Set Number for the ST7150 Mixer Feeder is 094245. The Set includes the following:

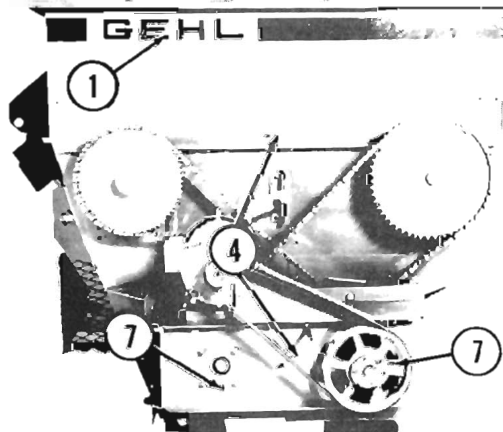
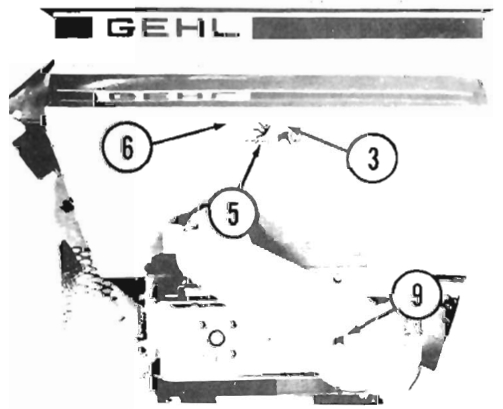
Ref. Part No.	Part No.	Description & Quantity
1	080124	GEHL (4 Places)
2	091435	NO STEP (On Planetary Cover - NOT Shown)
3	091438	WARNING - Chain Drive
4	091440	DANGER - Shield Missing (2 Places)
5	091442	DANGER - Rotating Auger (4 Places)
6	092282	WARNING - Electric Component
7	093020	Lubrication Symbol (8 Places)
8	093373	WARNING - General Safety Precautions
9	093473	WARNING - Belt Drive
10	093489	WARNING - Pinch Point
11	093921	7150 (2 Places)
12	093967	DANGER - Rotating Auger
13	094127	TMR Cow (2 Places)
14	093366	IMPORTANT - Locate Manual Here (Under Manual Pouch - NOT Shown)



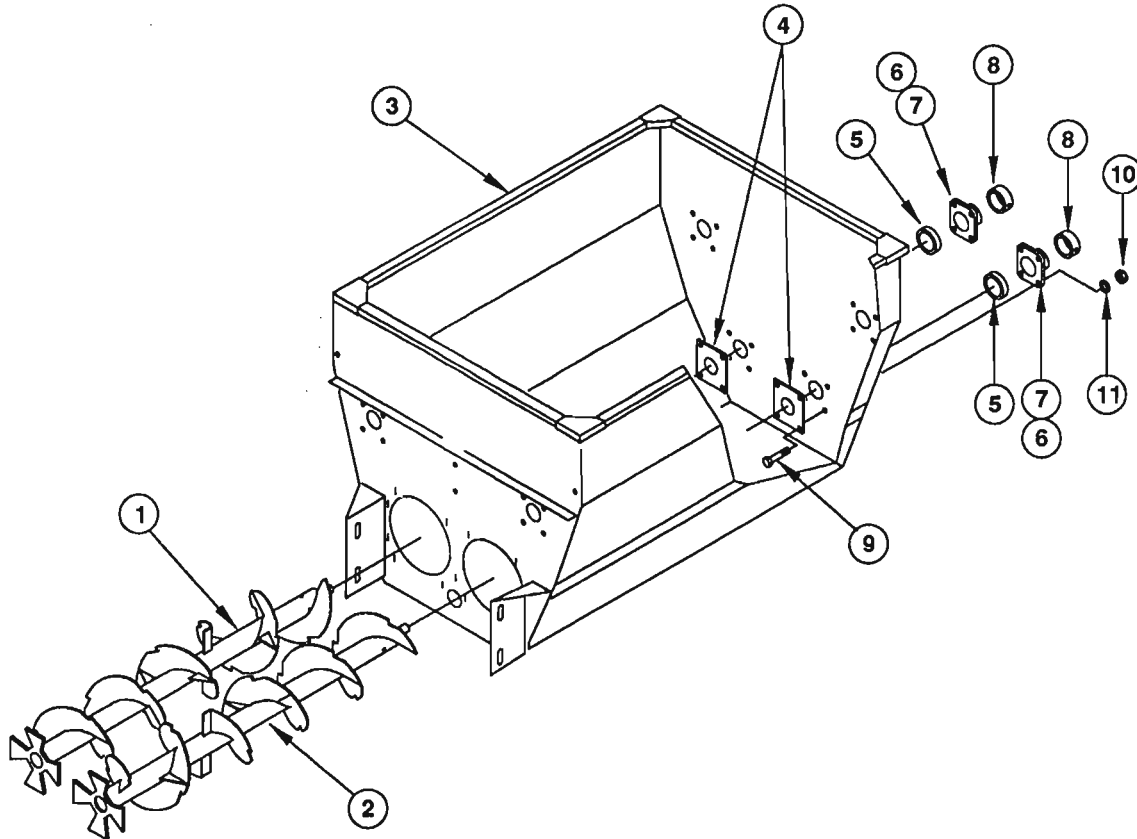
Front Master



Rear Master

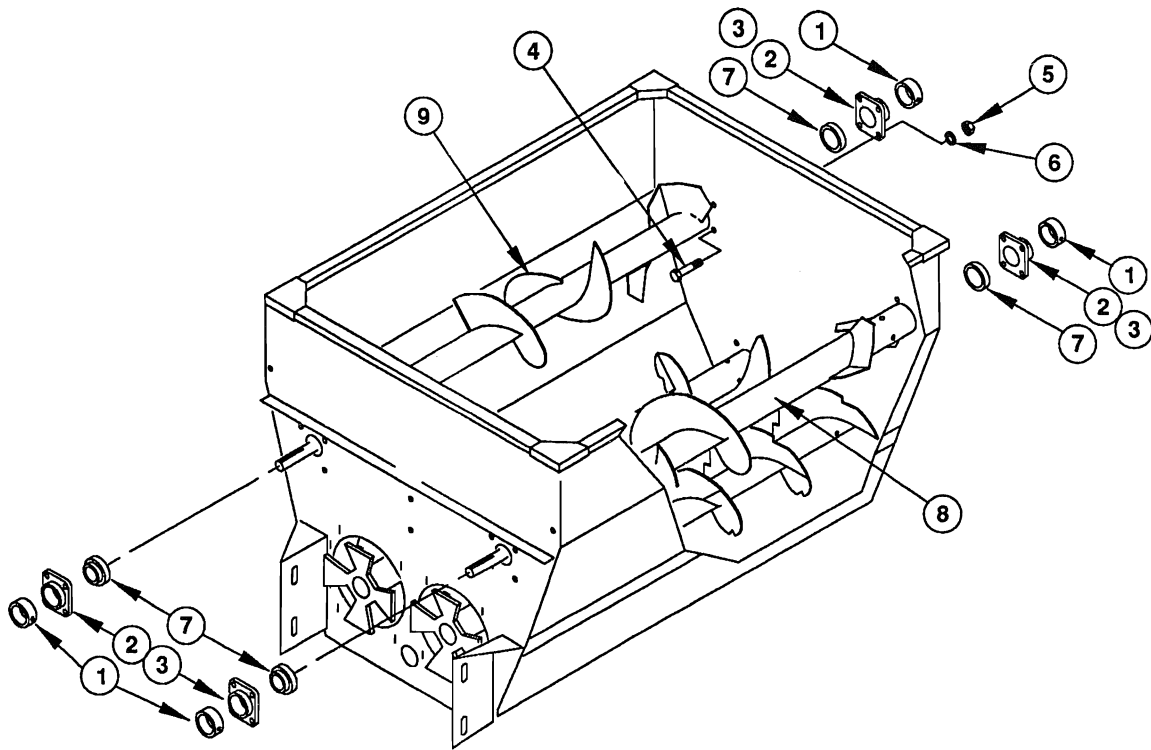


BOTTOM AUGERS



Ref. No.	Part No.	Description	Qty. Req.	Ref. No.	Part No.	Description	Qty. Req.
01	093623	AUGER/BOTTOM LEFT	1	07	570002 ^a	FITTING/GREASE	2
02	093622	AUGER/BOTTOM RIGHT	1	08	520195	COLLAR/BEARING	2
03	093596	TANK ASS'Y	1	09	650569	CS 1/2X1-3/4	8
04	093768	BACKING PLATE	2	10	653018	1/2 N	8
05	520194	BEARING/BALL	2	11	654024	1/2 L	8
06	R13216	HOUSING/BEARING	2				

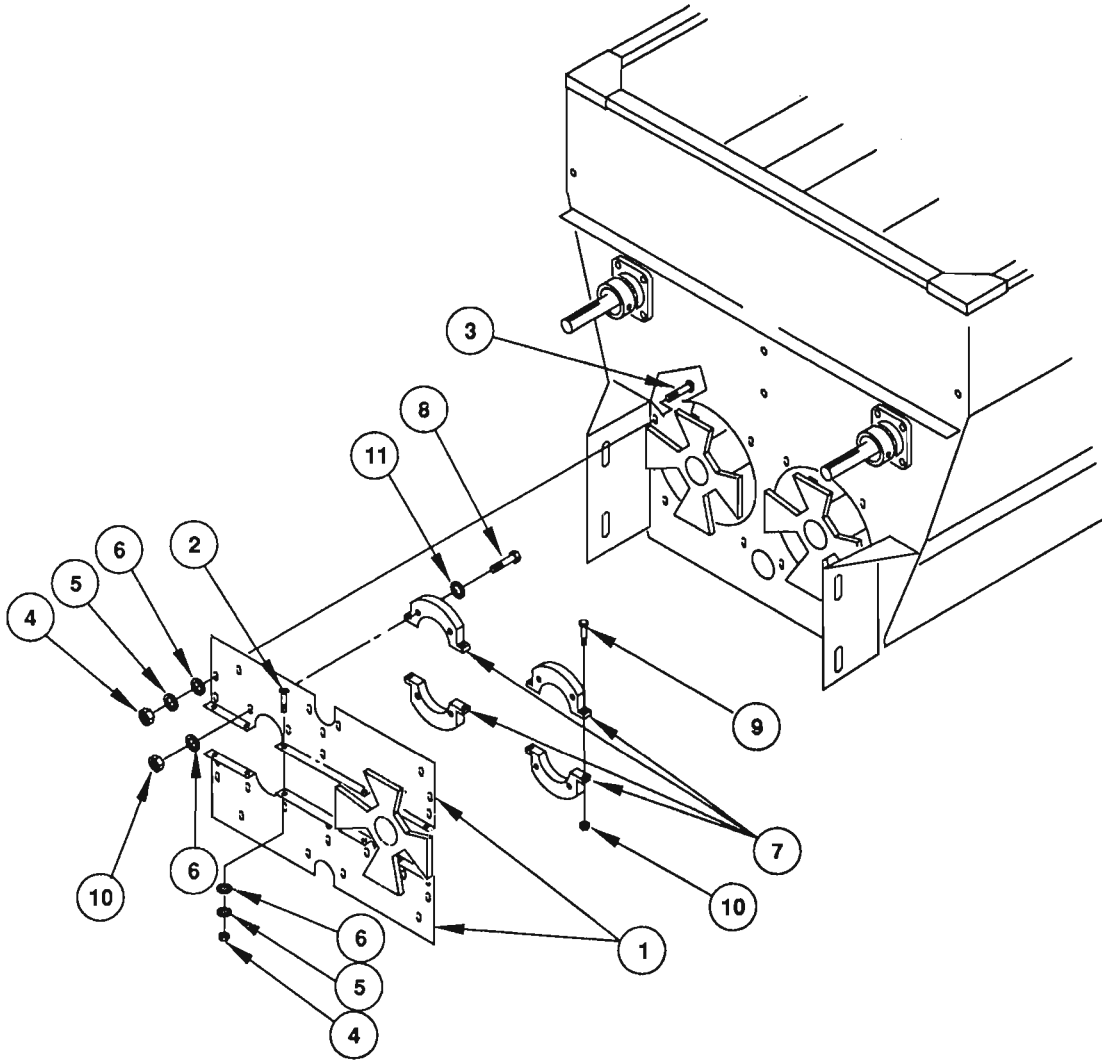
^a Included with R13216.



Ref. No.	Part No.	Description	Qty. Req.	Ref. No.	Part No.	Description	Qty. Req.
01	520195	COLLAR/BEARING	4	06	654024	1/2 L	16
02	R13216	HOUSING/BEARING	4	07	520194	BEARING/BALL	4
03	570002 ^a	FITTING/GREASE	4	08	093636	AUGER/TOP RIGHT	1
04	650569	CS 1/2X1-3/4	16	09	093637	AUGER/TOP LEFT	1
05	653018	1/2 N	16				

^a Included with R13216.

SEALING WASHERS

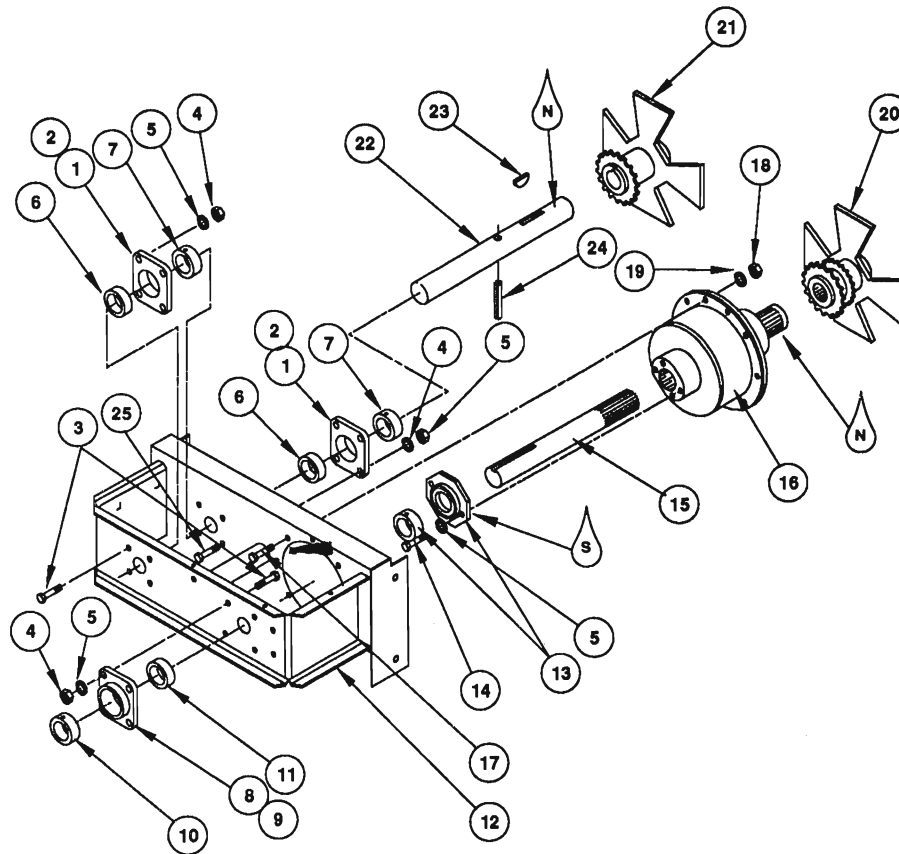


Note: Sealing Washers are Snug (But NOT Tight) to End Panels and Around Auger Tube

Ref. No.	Part No.	Description	Qty. Req.	Ref. No.	Part No.	Description	Qty. Req.
01	092647	ADJUSTMENT PANEL	2	09	650568	CS 5/16X2	4
02	650573	RHSQNB 5/16X1	6	10	064260	5/16 NILN	12
03	650745	RHSQNB 5/16X1-1/4	14	11	B11296	WASHER	8
04	653007	5/16 N	20				
05	654024	5/16 L	20				
06	654004	5/16 P	28				
07	117004 ^a	HALF/SEALING WASHER	4				
08	650692	CS 5/16X1-3/4	8				

^a For replacement, order Sealing Washer Kit 124975 which includes Two Washers and attaching hardware.

DRIVE MOUNT ASSEMBLY



SYMBOLS			
WHITE GREASE	OIL	SILICONE	NEVER SEIZE

Ref. No.	Part No.	Description	Qty. Req.	Ref. No.	Part No.	Description	Qty. Req.
01	R13216	HOUSING/BEARING	2	17	651232	CS 9/16X1-3/4	8
02	570002 ^a	FITTING/GREASE	2	18	651231	9/16 N	8
03	650569	CS 1/2X1-3/4	8	19	654056	9/16 L	8
04	653018	1/2 N	12	20	093679	SPLINED STAR ASS'Y	1
05	654030	1/2 L	14	21	093581	KEYED HUB ASS'Y	1
06	520194	BEARING/BALL	2	22	093666	SHAFT/KEYED HUB	1
07	520195	COLLAR/BEARING	2	23	650601	KEY/WOODRUFF 3/8X1-1/2	1
08	R13062	HOUSING/BEARING	1	24	052125	PIN/SPRING	1
09	570014 ^b	FITTING/GREASE	1	25	650594	CS 1/2X3-1/4	4
10	520153	COLLAR/BEARING	1				
11	069387	BEARING/BALL	1				
12	094062	DRIVE MOUNT ASS'Y	1				
13	094066 ^c	BEARING PLATE ASS'Y	1				
14	650494	CS 1/2X1	2				
15	094067	SHAFT/POWERHEAD NO. 8	1				
16	094074 ^d	POWERHEAD NO.8	1				

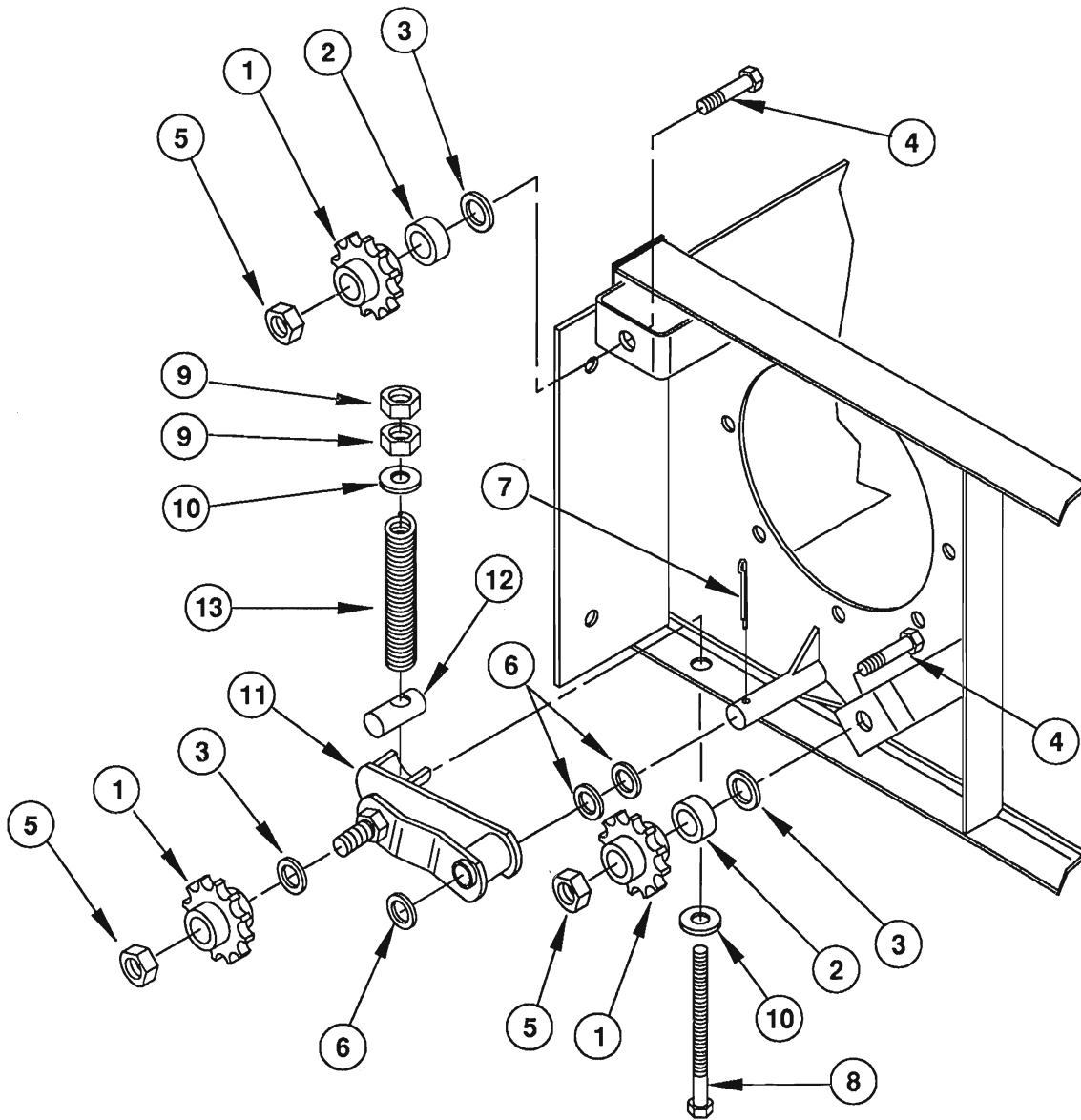
^a Included with R13216.

^b Included with R13062.

^c Assembly includes 520153 Lock Collar and 053961 Seal.

^d For components, see separate drawing.

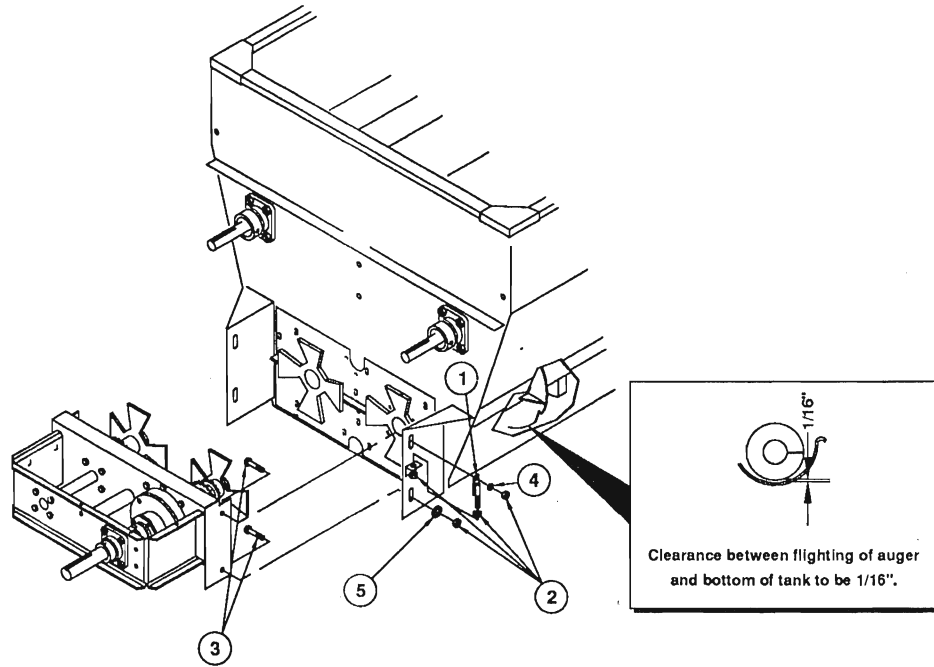
DRIVE MOUNT SPROCKETS & IDLERS



NOTE: VIEW SHOWN IS ROTATED 90deg. TO CLARIFY
PLACEMENT OF SPROCKETS.

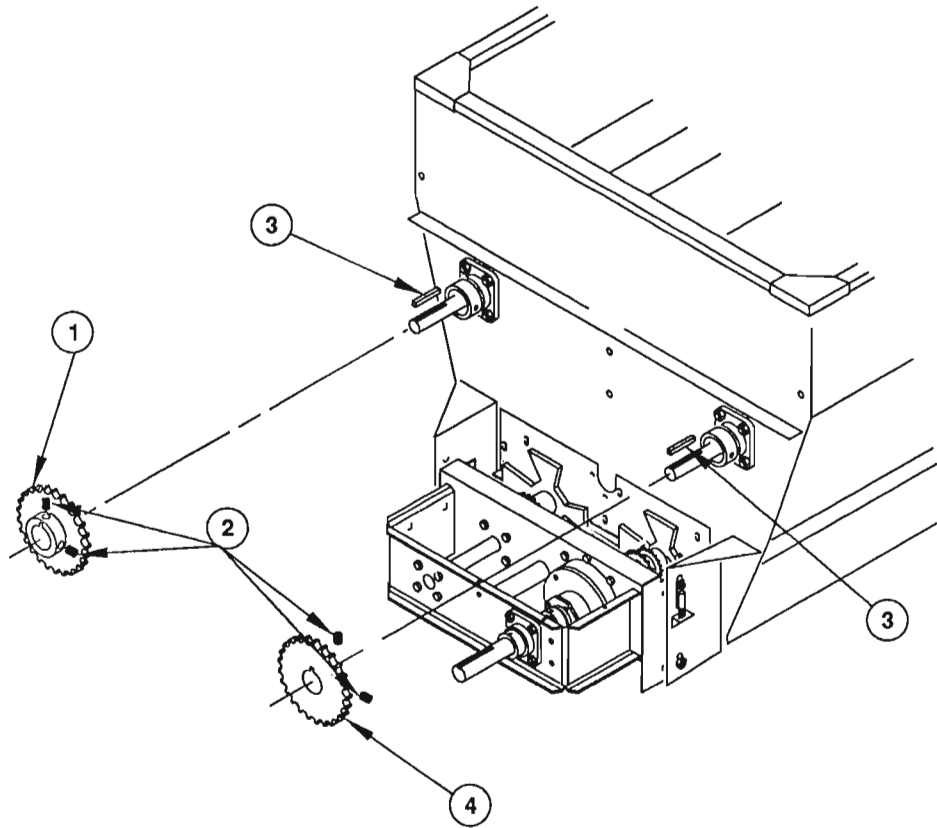
Ref. No.	Part No.	Description	Qty. Req.	Ref. No.	Part No.	Description	Qty. Req.
01	091918	SPROCKET/IDLER #80X12T	3	08	600595	BOLT/APRON TIGHTENER	1
02	062776	SPACER/SPRING	2	09	653018	1/2 N	2
03	099242	BUSHING/MACHINE 3/4	AR	10	654009	1/2 P	2
04	650416	CS 3/4X2-1/2	2	11	094032	IDLER ASS'Y	1
05	064331	3/4 LN	3	12	092146	PIVOT/TENSION	1
06	651151	1" N-NARROW	AR	13	380-32303	SPRING COMPRESSION	1
07	655020	PIN/COTTER 3/16X1-1/2	1				

BOTTOM AUGER CLEARANCE ADJUSTMENT

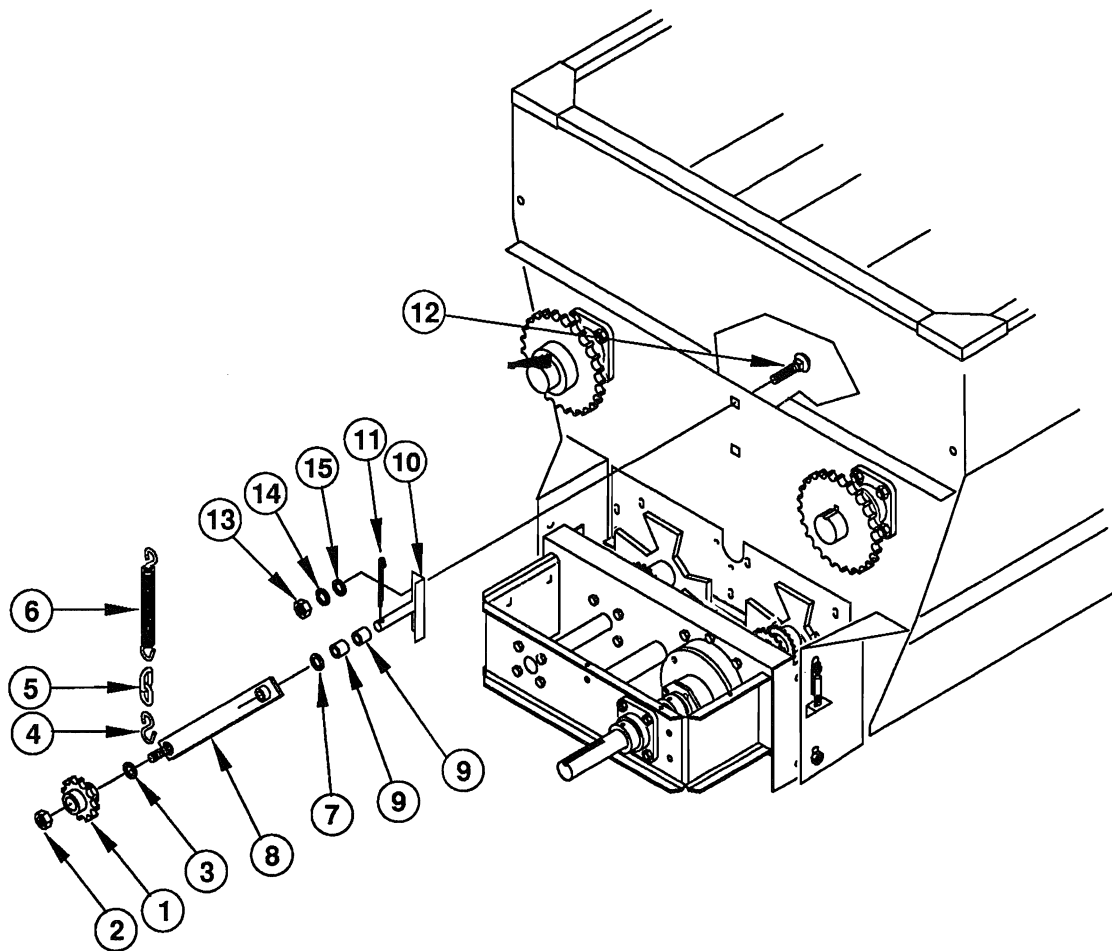


Ref. No.	Part No.	Description	Qty. Req.	Ref. No.	Part No.	Description	Qty. Req.
01	092667	ADJUSTMENT BRACKET	2	04	654034	3/4 L	4
02	653026	3/4 N	8	05	654014	3/4 P	2
03	650163	CS 3/4X1-3/4	4				

TOP AUGER DRIVE SPROCKETS



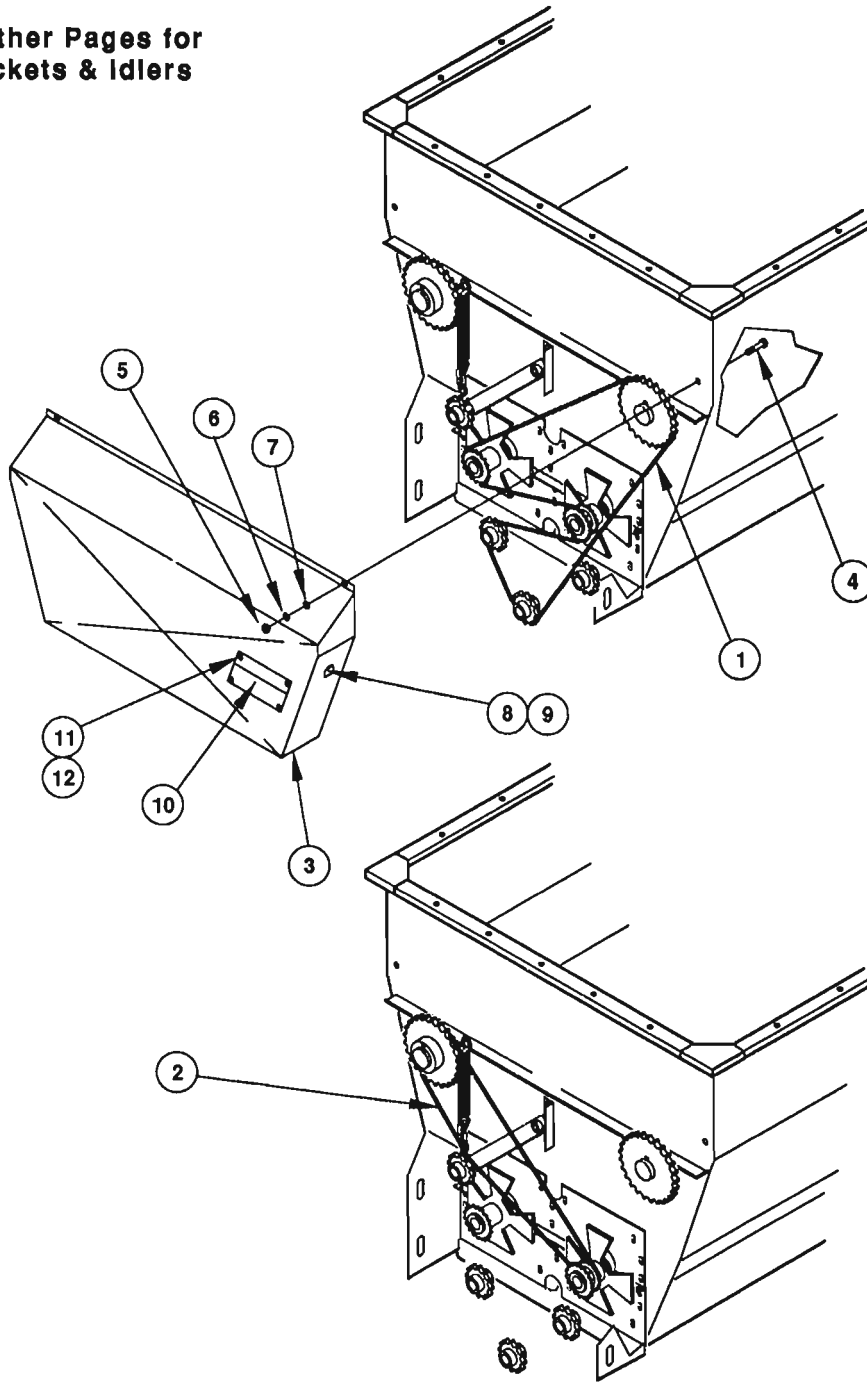
Ref. No.	Part No.	Description	Qty. Req.	Ref. No.	Part No.	Description	Qty. Req.
01	093675	SPROCKET ASS'Y 63T	1	03	093508	KEY/SQUARE	2
02	650214	SHSS-CP 3/8X1/2	4	04	093676	SPROCKET ASS'Y 54T	1



Ref. No.	Part No.	Description	Qty. Req.	Ref. No.	Part No.	Description	Qty. Req.
01	077183	SPROCKET/15T IDLER	1	09	062776	SPACER/SPRING	2
02	071709	5/8 LN	1	10	093684	IDLER BRACKET ASS'Y	1
03	654012	5/8 P	AR	11	655020	PIN/COTTER 3/16X1-1/2	1
04	B11433A	HOOK/RELEASE CHAIN	1	12	650786	RHSQNB 3/8X1-1/4	2
05	092643	CHAIN	1	13	653010	3/8 N	2
06	092681	SPRING/EXTENSION	1	14	654026	3/8 L	2
07	099242	BUSHING/MACHINE 3/4	AR	15	654006	3/8 P	2
08	092669	IDLER ARM	1				

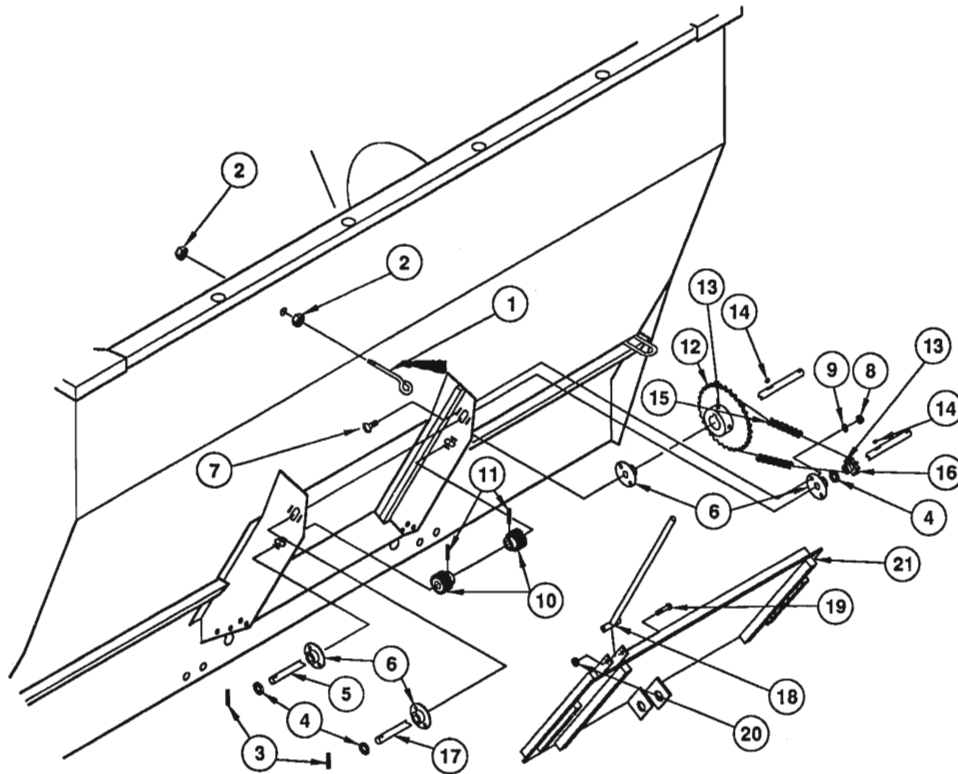
DRIVE CHAINS & REAR SHIELD

See Other Pages for
Sprockets & Idlers



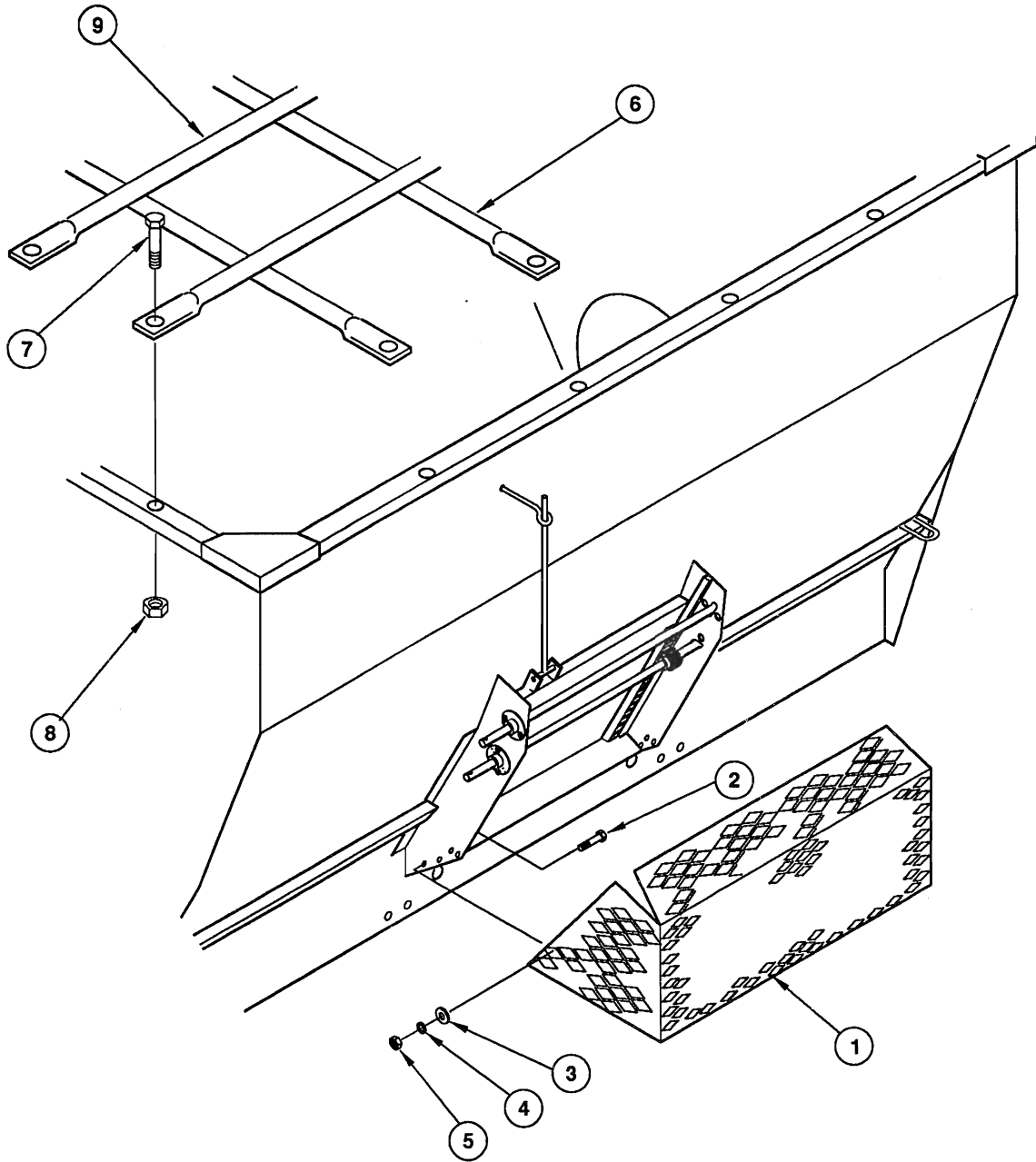
Ref. No.	Part No.	Description	Qty. Req.	Ref. No.	Part No.	Description	Qty. Req.
01	093897	CHAIN/ROLLER (#80) OF 154 LINKS INCLUDING ONE 500195 PLAIN CONNECTOR	1	06	654022	1/4 L	2
02	094116	CHAIN/ROLLER (#60) OF 144 LINKS INCLUDING ONE 500160 PLAIN CONNECTOR	1	07	654002	1/4 P	2
03	093976	REAR SHIELD ASS'Y	1	08	094089a	PLATE/COVER	2
04	650448	CS 1/4X3/4	2	09	650632a	1/4 WN	2
05	653005	1/4 N	2	10	078580	POUCH/MANUAL	1
				11	068642	WASHER	4
				12	079923	RIVET/BLIND	4

a Included with 093976.

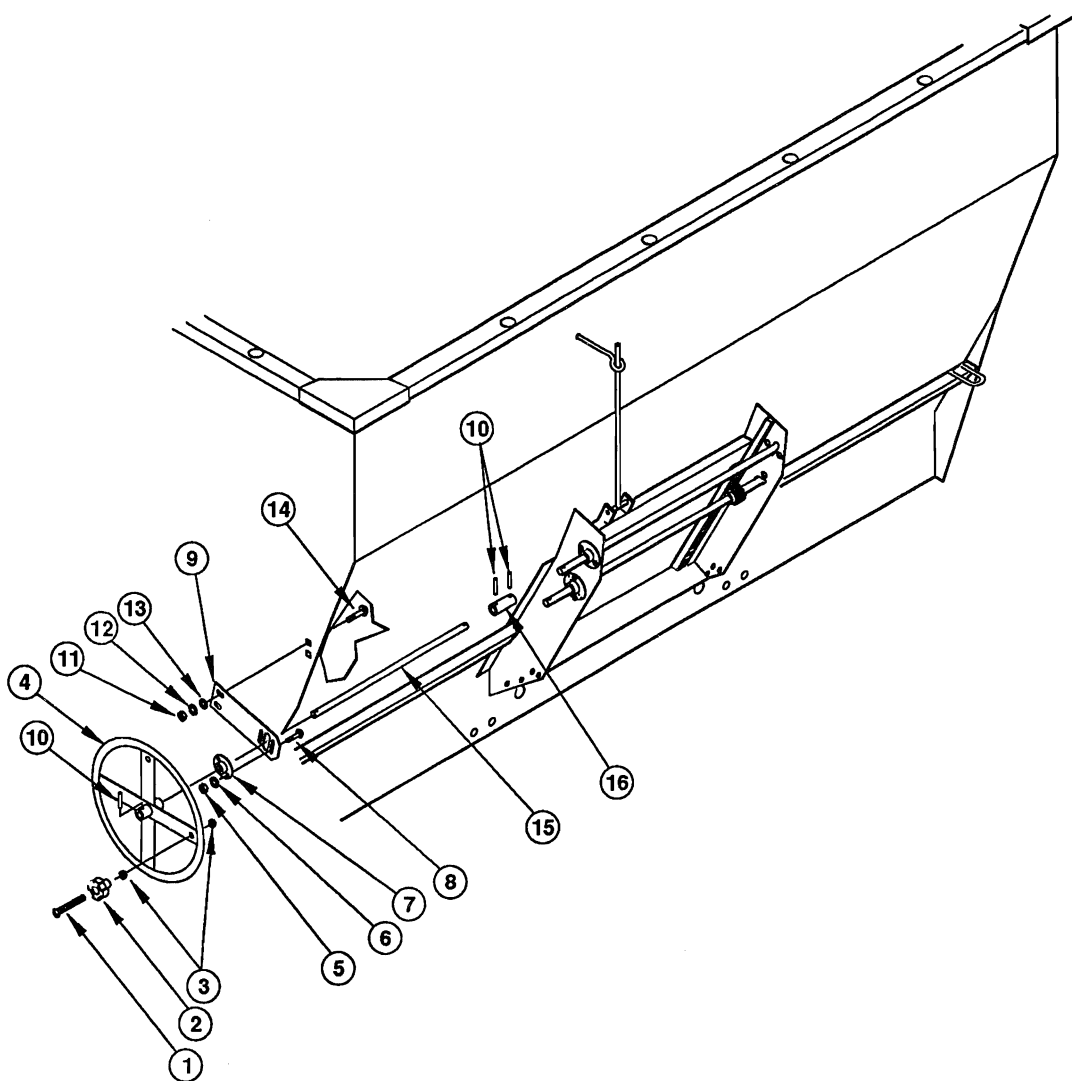


Ref. No.	Part No.	Description	Qty. Req.	Ref. No.	Part No.	Description	Qty. Req.
01	093751	EYEBOLT/GUIDE	1	13	650197	SHSS-CP 5/16X3/8	4
02	653010	3/8 N	2	14	068012	KEY	2
03	057864	PIN/SPRING	2	15	042222	CHAIN/ROLLER (#50) OF 39	1
04	H8354	WASHER/RETAINER	AR			LINKS INCLUDING ONE	
05	093708	SHAFT/DOOR BOTTOM	1			500057 PLAIN CONNECTOR &	
06	093709	SHAFT GUIDE ASS'Y	4			500058 OFFSET CONNECTOR	
07	650687	RHSQNB 5/16X3/4	8	16	093702	SPROCKET 9T	1
08	653007	5/16 N	8	17	093703	SHAFT/DOOR TOP	1
09	654024	5/16 L	8	18	093754	INDICATOR ROD ASS'Y	1
10	093690	GEAR/SPUR	2	19	650833	CS 5/16X3	1
11	040775	PIN/SPRING	2	20	071701	5/16 LN	1
12	093707	SPROCKET ASS'Y 31T	1	21	093770	DOOR ASS'Y	1

DISCHARGE GUARD & TANK PIPES

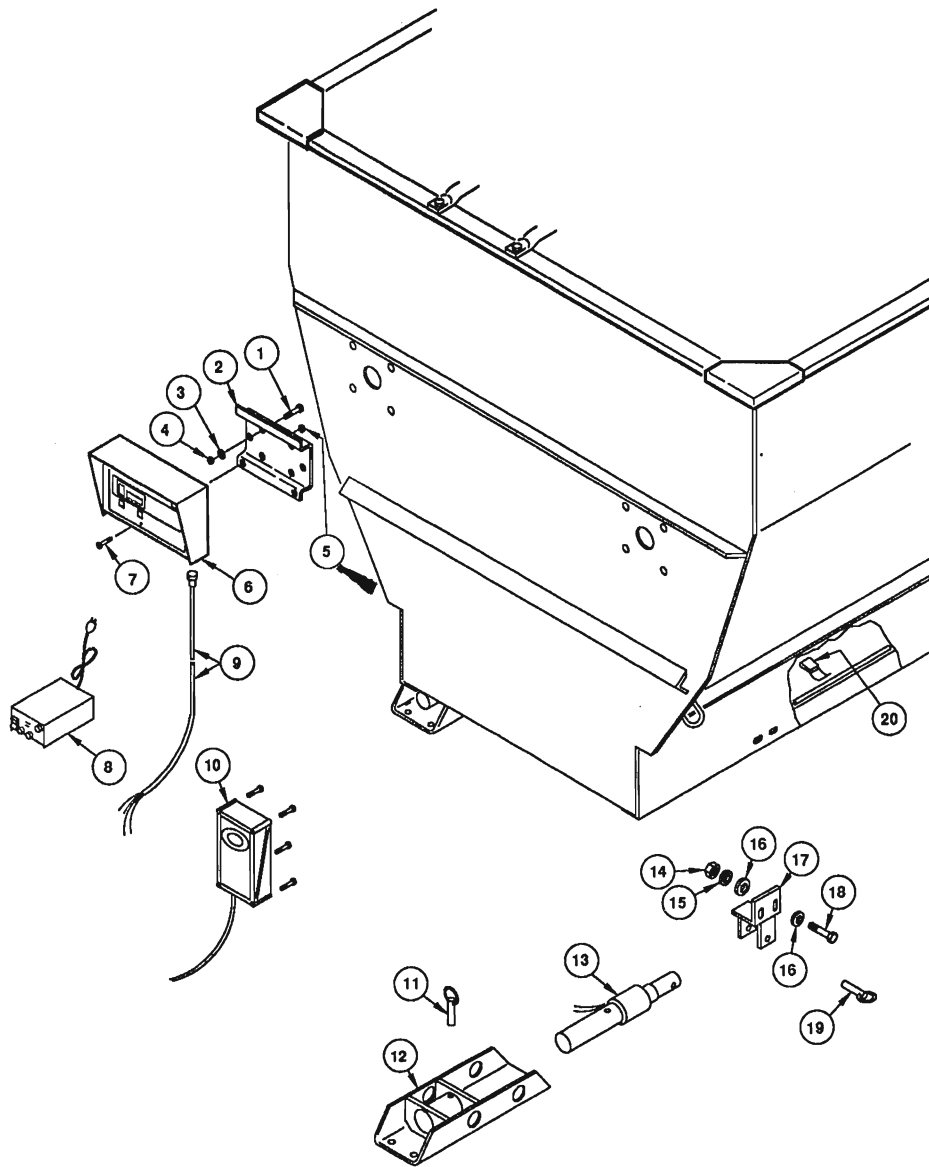


Ref. No.	Part No.	Description	Qty. Req.	Ref. No.	Part No.	Description	Qty. Req.
01	094133	DOOR GUARD	1	06	092636	SAFETY GRID PIPE-SHORT	4
02	650491	CS 3/8x1-1/4	4	07	650487	CS 5/16X1	16
03	087049	WASHER	4	08	070648	5/16 FLN	16
04	654026	3/8 L	4	09	093769	PIPE/SAFETY LONG	4
05	653010	3/8 N	4				



Ref. No.	Part No.	Description	Qty. Req.	Ref. No.	Part No.	Description	Qty. Req.
01	650503	CS 1/2X2-1/2	1	09	093705	BRACKET/EXTENSION	1
02	420-34267	CRANK	1	10	040775	PIN/SPRING	3
03	653018	1/2N	2	11	653010	3/8 N	2
04	093696	CONTROL WHEEL ASS'Y	1	12	654026	3/8 L	2
05	653007	5/16N	2	13	654006	3/8 P	2
06	654024	5/16 L	2	14	650786	RHSQNB 3/8X1-1/4	2
07	093709	SHAFT GUIDE ASS'Y	1	15	093704	SHAFT/EXTENSION	1
08	650687	RHSQNB 5/16X 3/4	2	16	093701	COUPLER/CONTROL	1

SCALE & COMPONENTS

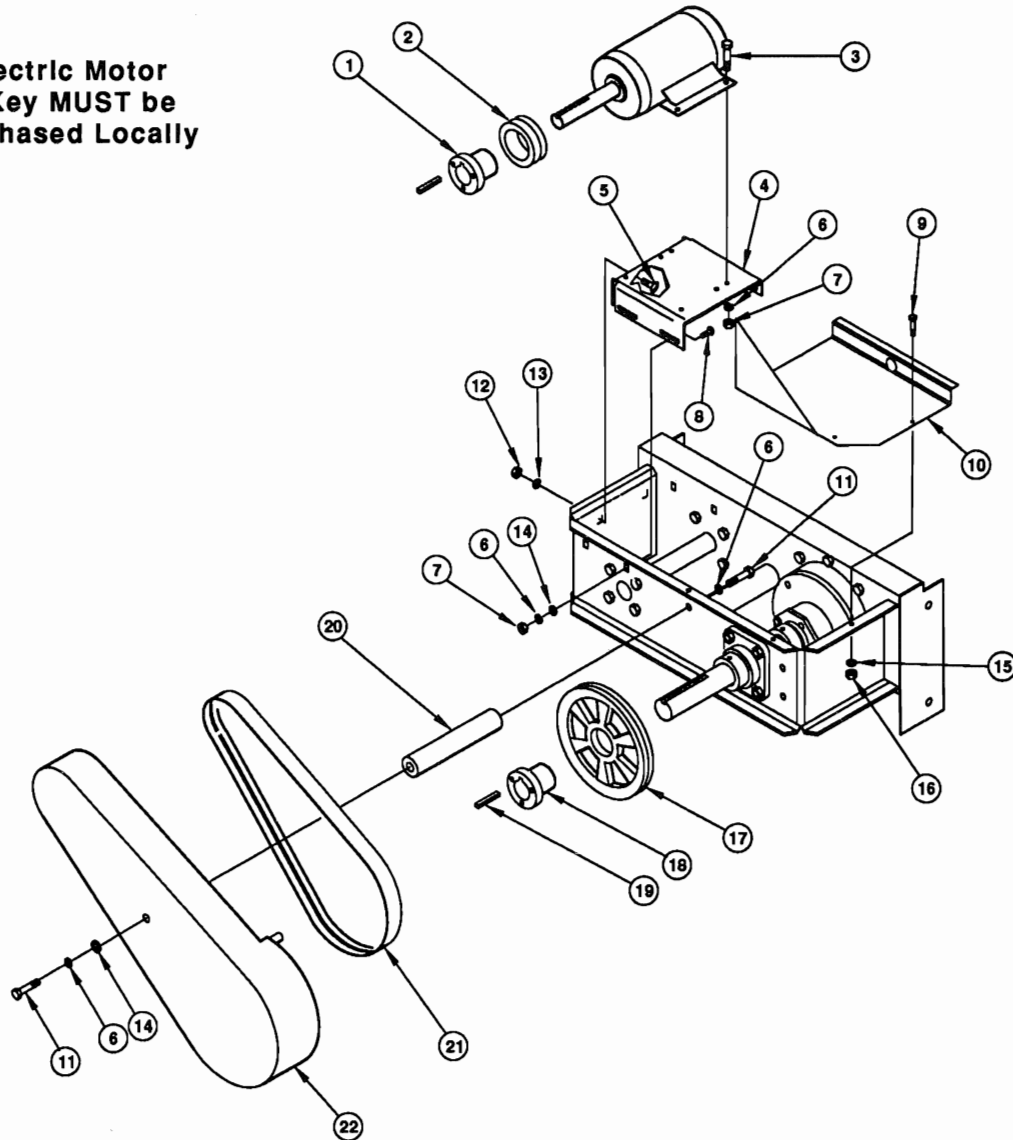


Ref. No.	Part No.	Description	Qty. Req.	Ref. No.	Part No.	Description	Qty. Req.
01	650542	CS 1/4X1-1/2	4	13	092761	WEIGHBEAM	4
02	092684	BRACKET/INDICATOR	1	14	653018	1/2 N	8
03	654022	1/4 L	4	15	654030	1/2 L	8
04	653005	1/4 N	4	16	654009	1/2 P	16
05	650550	#10-24 N	2	17	110343	BRACKET/WEIGHT	4
06	093887	MODEL 5 INDICATOR	1	18	650453	CS 1/2X1-1/2	8
	099200	MODEL 10 INDICATOR	1	19	110344	PIN/SELF LOCKING	4
07	650815	RHMS #10-24X3/4	2	20	092675	CLIP-CABLE FRAME	AR
08	099951	CONVERTER/AC/DC	1	21	110799 ^b	CARD/INSTRUCTION	1
09	110218	CABLE/4 WIRE	1				
10	092679 ^a	JUNCTION BOX	1				
11	110345	PIN/SELF LOCKING	4				
12	110342	MOUNT/ASSY LOWER	4				

^a Includes attaching hardware.

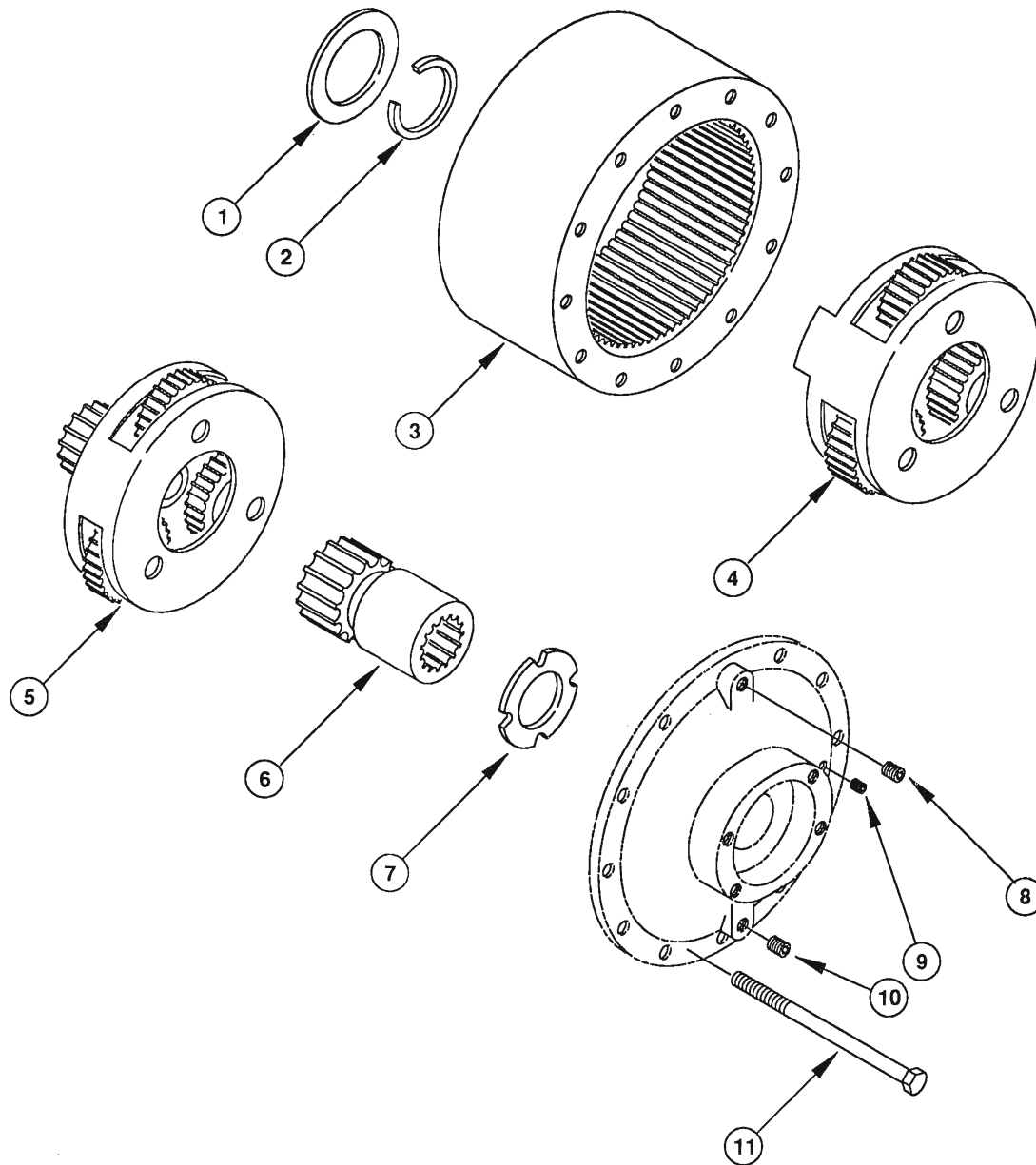
^b Provided with Indicator and NOT shown.

Electric Motor
& Key MUST be
Purchased Locally



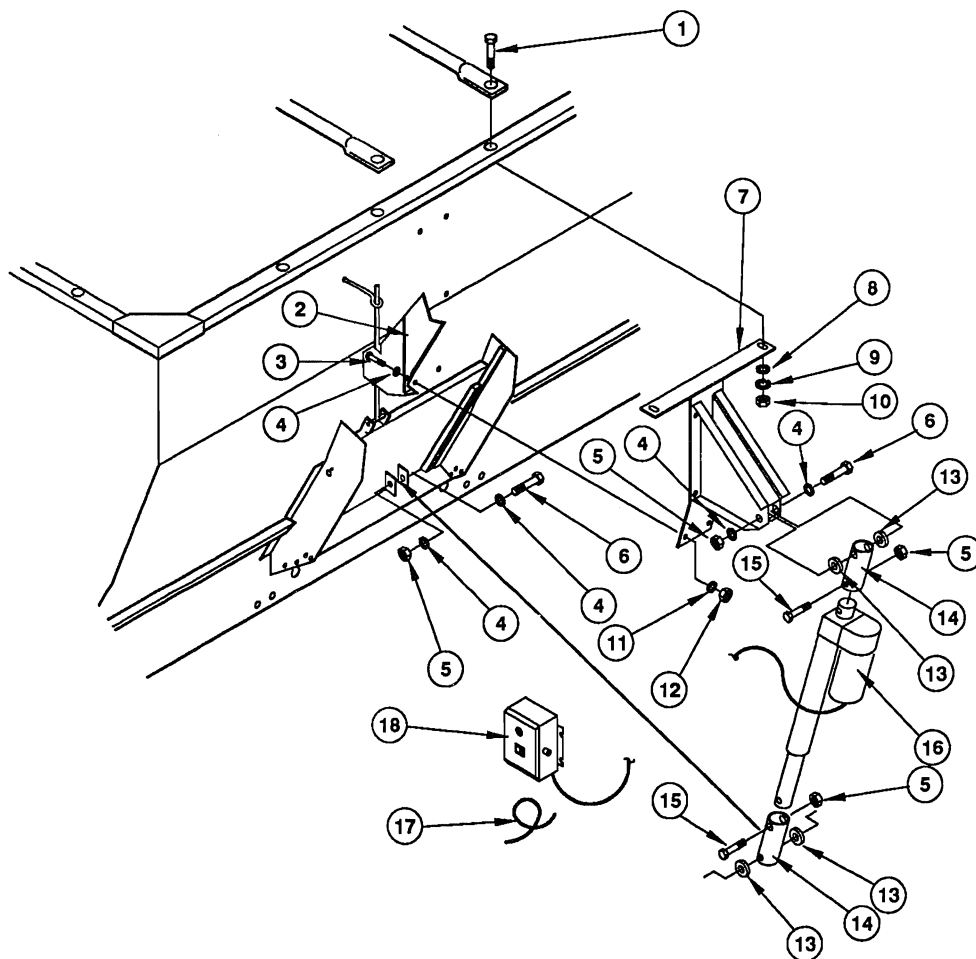
Ref. No.	Part No.	Description	Qty. Req.	Ref. No.	Part No.	Description	Qty. Req.
01	110370	BUSHING	1	12	653018	1/2 N	2
02	110366	SHEAVE	1	13	654009	1/2 P	2
03	650491	CS 3/8X1-1/4	4	14	654006	3/8 P	5
04	093718	MOUNT/MOTOR	1	15	654022	1/4 L	3
05	094123	RHSQNB 1/2X4	2	16	653005	1/4 N	3
06	654026	3/8 L	10	17	110367	SHEAVE	1
07	653010	3/8 N	8	18	110369	BUSHING	1
08	650786	RHSQNB 3/8X1-1/4	4	19	073295	KEY/SQUARE	1
09	650448	CS 1/4X3/4	3	20	094041	SPACER	1
10	094035	SHIELD/SHAFT	1	21	093755	BELT	1
11	650490	CS 3/8X1	2	22	094040	BELT SHIELD ASS'Y	1

PLANETARY GEARCASE



Ref. No.	Part No.	Description	Qty. Req.	Ref. No.	Part No.	Description	Qty. Req.
00	094074	POWERHEAD NO.8	1	05	110841	CARRIER/PRIMARY ASS'Y	1
		CONSISTS OF:		06	094119	GEAR/SUN	1
01	110489	WASHER/THRUST	1	07	094202	WASHER/THRUST	1
02	092938	KIT/THRUST WASHER RETAINING	1	08	660004	PLUG/PIPE 1/2	1
03	110839	GEAR/RING	1	09	660002	PLUG/PIPE 1/4	1
04	110840	CARRIER/SECONDARY ASS'Y	1	10	057569	PLUG/DRAIN MAGNETIC	1
				11	650605	CS 3/8X5-1/2	12

Electric Discharge Door Control 805140



Ref. No.	Part No.	Description	Qty. Req.	Ref. No.	Part No.	Description	Qty. Req.
	805140	ELECTRIC DISCHARGE DOOR CONTROL	1				
		CONSISTS OF:					
01	650545	CS 5/16X1-1/4	2	09	654024	5/16 L	2
02	094088	PLATE/SUPPORT	1	10	653007	5/16 N	2
03	650453	CS 1/2X1-1/2	6	11	654030	1/2 L	6
04	654009	1/2 P	10	12	653018	1/2 N	6
05	071706	1/2 LN	4	13	110346	BUSHING	4
06	650650	CS 1/2X3-1/2	2	14	117097	COUPLER	2
07	094087	MOUNT BRACKET	1	15	650585	CS 1/2X2	2
08	654004	5/16 P	2	16	115966	LINEAR ACTUATOR	1
				17	110353	CABLE/SWITCH-POWER ASS'Y	1
				18	115968	CONTROL/AC ACTUATOR	1

ST7150 - NUMERICAL INDEX

Part No.	Page No.	Ref. No.	Part No.	Page No.	Ref. No.	Part No.	Page No.	Ref. No.	Part No.	Page No.	Ref. No.
H 8354	13	04	093636	05	08	094133	14	01			
B 11433A	11	04	093637	05	09	094202	18	07			
B 11296	06	11	093666	07	22	099200	16	06			
R 13062	07	08	093675	10	01	099242	08	03			
R 13216	04	06	093676	10	04	099242	11	07			
R 13216	05	02	093679	07	20	099951	16	08			
R 13216	07	01	093684	11	10	110218	16	09			
380-32303	08	13	093690	13	10	110342	16	12			
420-34267	15	02	093696	15	04	110343	16	17			
040775	13	11	093701	15	16	110344	16	19			
040775	15	10	093702	13	16	110345	16	11			
042222	13	15	093703	13	17	110346	19	13			
052125	07	24	093704	15	15	110353	19	17			
057569	18	10	093705	15	09	110366	17	02			
057864	13	03	093707	13	12	110367	17	17			
062776	08	02	093708	13	05	110369	17	18			
062776	11	09	093709	13	06	110370	17	01			
068012	13	14	093709	15	07	110489	18	01			
068642	12	11	093718	17	04	110799	16	21			
069387	07	11	093751	13	01	110839	18	03			
073295	17	19	093754	13	18	110840	18	04			
077183	11	01	093755	17	21	110841	18	05			
078580	12	10	093768	04	04	115966	19	16			
079923	12	12	093769	14	09	115968	19	18			
087049	14	03	093770	13	21	117004	06	07			
091918	08	01	093887	16	06	117097	19	14			
092146	08	12	093897	12	01	520153	07	10			
092636	14	06	093976	12	03	520194	04	05			
092643	11	05	094032	08	11	520194	05	07			
092647	06	01	094035	17	10	520194	07	06			
092667	09	01	094040	17	22	520195	04	08			
092669	11	08	094041	17	20	520195	05	01			
092675	16	20	094062	07	12	520195	07	07			
092679	16	10	094066	07	13	660002	18	09			
092681	11	06	094067	07	15	660004	18	08			
092684	16	02	094074	07	16	805140	19				
092761	16	13	094074	18							
092938	18	02	094087	19	07						
093508	10	03	094088	19	02						
093581	07	21	094089	12	08						
093596	04	03	094116	12	02						
093622	04	02	094119	18	06						
093623	04	01	094123	17	05						

TORQUE SPECIFICATIONS FOR STANDARD MACHINE HARDWARE

All Torque Values are in Ft-Lbs unless otherwise stated.

(Multiply In-Lb value* by 0.113 or Ft-Lb value by 1.355 to obtain metric Nm value.)

Bolt Size	GR. 2		GR. 5		GR. 8	
	Dry	Lub.	Dry	Lub.	Dry	Lub.
8-32	19*	14*	30*	22*	41*	31*
8-36	20*	15*	31*	23*	43*	32*
10-24	27*	21*	43*	32*	60*	45*
10-32	31*	23*	49*	36*	68*	51*
1/4-20	66*	50*	9	75*	12	9
1/4-28	76*	56*	10	86*	14	10
5/16-18	11	9	17	13	25	18
5/16-24	12	9	19	14	25	20
3/8-16	20	15	30	23	45	35
3/8-24	23	17	35	25	50	35
7/16-14	32	24	50	35	70	55
7/16-20	36	27	55	40	80	60
1/2-13	50	35	75	55	110	80
1/2-20	55	40	90	65	120	90
9/16-12	70	55	110	80	150	110
9/16-18	80	60	120	90	170	130
5/8-11	100	75	150	110	220	170
5/8-18	110	85	180	130	240	180
3/4-10	175	130	260	200	380	280
3/4-16	200	150	300	220	420	320
7/8-9	170	125	430	320	600	460
7/8-14	180	140	470	360	660	500
1-8	250	190	640	480	900	680
1-12	270	210	710	530	1000	740

* In-Lb

NOTE: These torque values are to be used for all **GEHL** hardware excluding: Locknuts, Self-tapping Screws, Thread Forming Screws and Sheet Metal Screws. Unless otherwise specified, all torque values must meet this specification.

GEHL®

FARM EQUIPMENT

GEHL COMPANY WEST BEND, WISCONSIN 53095 U.S.A.