

Form No.
907072
Replaces
904300

7210

Mixer Feeder



SERVICE PARTS MANUAL

GEHL® AGRICULTURE

Introduction

When ordering service parts, specify the correct part number, full description, quantity required, the unit model number and serial number.

The Mixer Feeder model and serial number is on a plate located on the left side of the Main Frame at the left front corner.

“Right” and “left” are determined from a position standing behind the Mixer Feeder. From this position, the Discharge Gate is on the “left” side.

GEHL® Company reserves the right to make changes or improvements in the design or construction of any part of the unit without incurring the obligation to install such changes on any previously delivered units.

NOTE: *On original tire replacement, company policy prohibits the sale of replacement tires for all GEHL machinery. Replacement Wheel Sets are available and tire size information is called out with the Wheel Sets to facilitate replacement tire selection. ALL REPLACEMENT TIRES MUST BE PURCHASED LOCALLY.*

Refer to the abbreviations table located on this page for the various fastener descriptions. Standard attaching hardware torque values are also provided on the inside back cover.

In the exploded view parts list, Reference Numbers may have additional information following the Reference Number. A number in parentheses such as (4), will indicate a quantity of how many times that Reference Number is used in that location. A Tear Drop symbol will indicate an application of a “wet” product such as oil, and the number inside the Tear Drop will correspond to the description in the Parts List. Also, a number inside of a hexagon will be the torque value required, in foot pounds, on the associated Reference Number. Items shown in the parts list that do not have Reference Numbers are shown for reference purposes only and are NOT available for purchase.

Unless otherwise specified, all Cap Screws or Bolts are Grade 5, cadmium or zinc plated; Hexagon Nuts for Grade 5 Screws or Bolts are Grade B; Hexagon Nuts for other Screws or Bolts are Grade A.

NOTE: *The following abbreviations may used herein:*

ASSD	– Assembled
ASSY	– Assembly
CB	– Carriage Bolt
CCW	– Counterclockwise
CP	– Cotter Pin
CS	– Cap Screw (Hexagon Head)
CTR	– Center
CW	– Clockwise
DEG	– Degree
DIA	– Diameter
FCS	– Flanged Cap Screw
FHMS	– Flat Head Machine Screw
FL	– Flanged
FLN	– Flanged Lock Nut (Hexagon)
FLS	– Flanged Lock Screw (Hexagon)
FW	– Flat Washer
GA	– Gauge
GR	– Grade
HD	– Hard or Head
HN	– Hex Nut
INCL	– Includes
JT	– Joint
LG	– Large
LH	– Left Hand
LW	– Lock Washer
LN	– Lock Nut
LW	– Lock Washer
M	– Metric
MM/mm	– Millimeter
NF	– National Fine
PB	– Plow Bolt
PTO	– Power Take Off
RH	– Right Hand
RPM	– Revolutions Per Minute
RT	– Right
SERR	– Serrated
SHCS	– Socket Head Cap Screw
SN	– Serial Number or Slotted Nut
SQ	– Square
T	– Tooth or Teeth
TFS	– Thread Forming Screw
THMS	– Truss Head Machine Screw
THRD	– Thread
WLDMT	– Weldment
#	– Number
()	– (Quantity Used Here)
	– Torque Required in foot pounds
	– Indicates a Fluid Application

TABLE OF CONTENTS

Description	Page
Introduction	Inside Front Cover
Table of Contents	1
Decal Locations	2-5
PTO , Hitchjack, Guards, Discharge Gate & Hydraulics	6-7
Augers, Rear Drive & Guard (After SN8863)	8-9
Augers, Rear Drive & Guard (Before SN8864)	10-11
Chaincase	12-13
Axles, Wheels, Scale & Weighbar	14-15
One-piece Discharge Conveyor	16-17
Two-piece Discharge Conveyor	18-19
Component Breakdowns	20-25
Universal Drive	20
Hitchjacks (Hammerblow & Weasler)	21
092664 Powerhead	22
091882 Hydraulic Cylinder	22
Augers (After SN8863)	23
Augers (Before SN8864)	24
065500 Hydraulic Motor	25
Accessories	26-28
Single Valve 804570	26
Transport Lighting Kit	27
Safety Chain	27
Battery Box 804569	28
Magnet Assembly 804568	28
Tripod Kit	28
Numerical Index	31
Standard Hardware Torque specifications	Inside Back Cover

DECAL LOCATIONS

GENERAL INFORMATION

Decal Location information is provided to assist in the proper selection and application of new decals, in the event the original decal(s) become(s) damaged or the machine is repainted. Refer to the listing for the illustration reference number, part number, description and quantity of each decal provided in the Kit. Refer to the appropriate illustration(s) for replacement location(s).

NOTE: Refer to the *SAFETY Chapter of the Operator's Manual for the specific information provided on all of the various Safety Decals furnished in the Decal Kit(s).*

To ensure proper selection for correct replacement decal(s), compare all of the various close-up location photographs to your machine **BEFORE** starting to refinish the unit. Then, circle each pictured decal (applicable to your machine) while checking-off its part number in the listing. After you have verified all the decals needed for replacement, set aside unneeded decals for disposal.

NEW DECAL APPLICATION

Surfaces **MUST** be free from dirt, dust, grease and other foreign material before applying the new decal. To apply a solid-formed decal, remove the smaller portion of the decal backing paper and apply this part of the exposed adhesive backing to the clean surface while maintaining proper position and alignment. Slowly peel off the other portion of the backing paper while applying hand pressure to smooth-out the decal surface.



CAUTION

ALWAYS observe Safety Rules shown on Decals. If Decals become damaged, or if the unit is repainted, replace the Decals. If repainting, **BE SURE** that **ALL** Decals from the Kit(s) which apply to your machine, are affixed to your unit.

PAINT NOTICE

Use this list to order paint for refinishing:

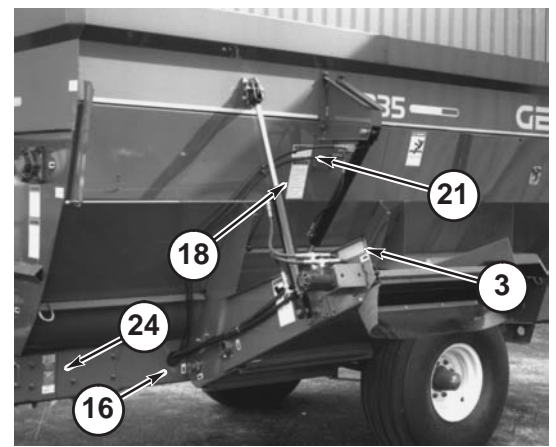
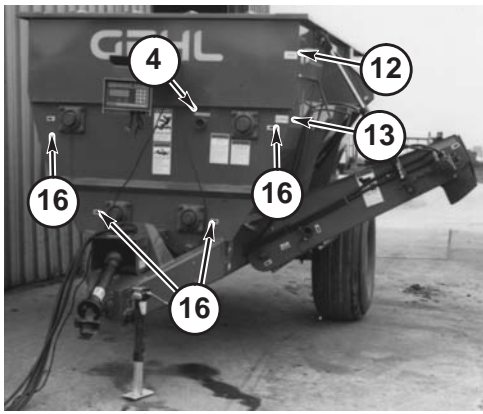
906315	One Gal. AG Red
906324	One Qt. Light Grey
906316	6 (12 oz. Spray Cans) AG Red
906325	6 (12 oz. Spray Cans) Light Grey

The Decal Set Number for the MF7210 is 113349. Decal locations for the MF7210 through MF7500 are identical. The photographs shown are **NOT** necessarily of a MF7210. The Decal Set includes the following:

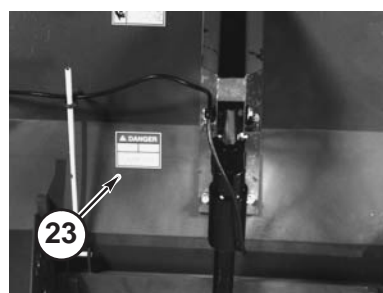
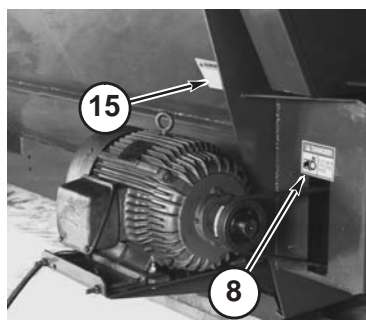
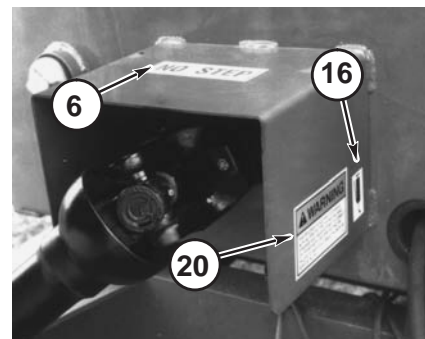
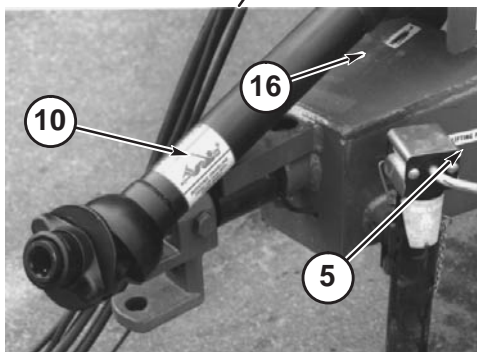
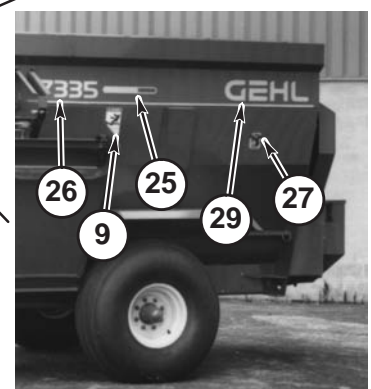
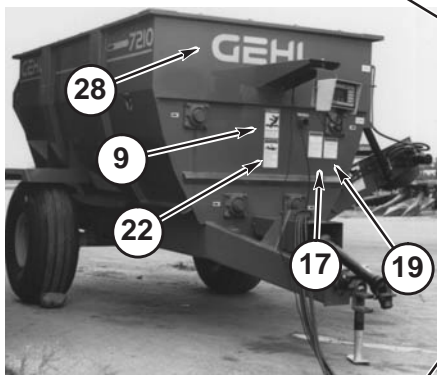
Ref. No.	Part No.	Description & Quantity
1	047272	SMV (Slow Moving Vehicle)
2	067493	Red Reflector (3 Places)
3	067926	Amber Reflector
4	060510	Jack Storage Position
5	060511	Jack Lifting Position
6	080247	NO Step
7	091438	WARNING - Chain Drive (2 Places)
8	091440	DANGER - Do NOT Operate With Shield Missing (2 or 3 Places)
9	091442	DANGER - Rotating Auger (4 Places)
10	091444	DANGER - Rotating Component
11	091446	ATTENTION - Add Lubrication
12	091447	Open
13	091448	Closed
14	091727	WARNING - Automatic Conveyor (2 Places)(Two-Piece Conveyor Only)
15	092282	WARNING - Electrical Component Compliance (Stationary ONLY)
16	093020	Lubrication Symbol (18* Places)
17	093367	WARNING - Owner's Responsibility & Read Manual
18	093369	WARNING - Hydraulic Oil & Unplugging
19	093373	WARNING - General Safety
20	093466	WARNING - 540 RPM Operation ONLY
	093465	WARNING - 1000 RPM Operation ONLY (1000 RPM Converted Units ONLY)
21	093489	WARNING - Pinch Point
22	093653	WARNING - Rotating Drive Line
23	093967	DANGER - Rotating Component (Stationary-ONLY)
24	094951	Made in USA
25	094963	Colorbar (2 Places)
26	095040	7210 (2 Places, see NOTE below)
27	112710	TMR COW (2 Places)
28	122617	GEHL
29	122736	GEHL (2 Places)

NOTE: Order adequate numbers of Part Number 126757 for 10 ft rolls of replacement Striping.

NOTE: Decal sets vary only by the model number Decals (item 26). * Quantities based on 2-piece Conveyor requirements.



Front Master



Stationary-mounted Mixer Feeder Units Only

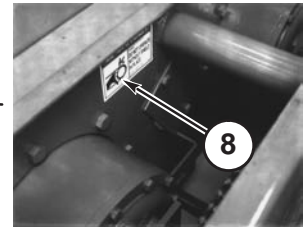
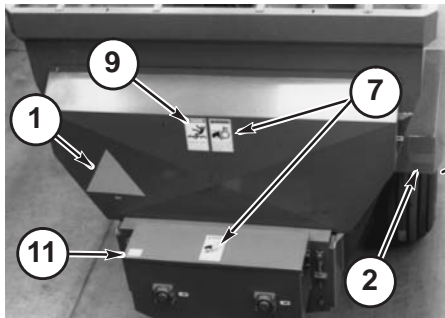
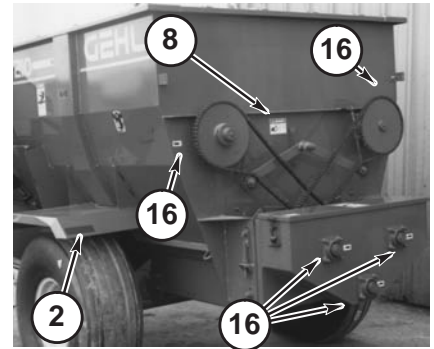
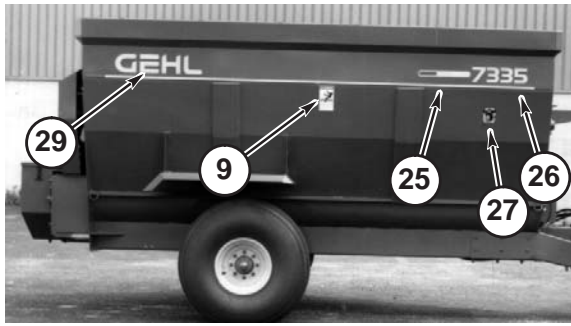
NOTE: *This list is a repeat of the Decal List on a previous page and is provided for your convenience when selecting Decals from the second page of photographs.*

Ref. Part

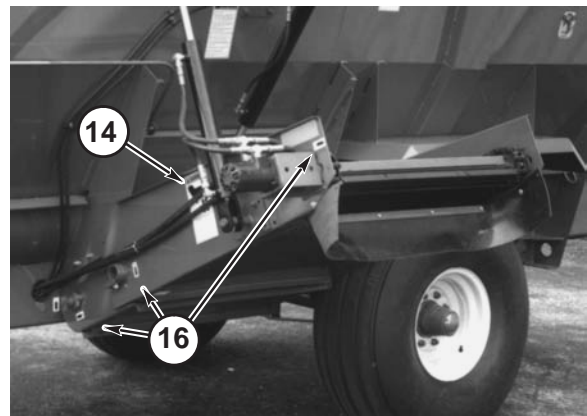
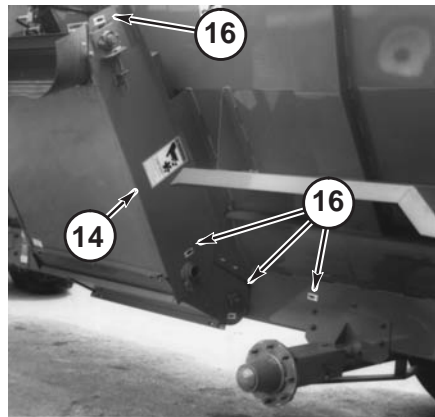
No.	No.	Description & Quantity
1	047272	SMV (Slow Moving Vehicle)
2	067493	Red Reflector (3 Places)
3	067926	Amber Reflector
4	060510	Jack Storage Position
5	060511	Jack Lifting Position
6	080247	NO Step
7	091438	WARNING - Chain Drive (2 Places)
8	091440	DANGER - Do NOT Operate With Shield Missing (2 or 3 Places)
9	091442	DANGER - Rotating Auger (4 Places)
10	091444	DANGER - Rotating Component
11	091446	ATTENTION - Add Lubrication
12	091447	Open
13	091448	Closed
14	091727	WARNING – Automatic Conveyor (2 Places)(Two–Piece Conveyor Only)

15	092282	WARNING – Electrical Component Compliance (Stationary ONLY)
16	093020	Lubrication Symbol (18* Places)
17	093367	WARNING - Owner's Responsibility & Read Manual
18	093369	WARNING - Hydraulic Oil & Unplugging
19	093373	WARNING - General Safety
20	093466	WARNING - 540 RPM Operation ONLY
	093465	WARNING - 1000 RPM Operation ONLY (1000 RPM Converted Units ONLY)
21	093489	WARNING - Pinch Point
22	093653	WARNING - Rotating Drive Line
23	093967	DANGER - Rotating Component (Stationary-ONLY)
24	094951	Made in USA
25	094963	Colorbar (2 Places)
26	095040	7210 (2 Places, see NOTE below)
27	112710	TMR COW (2 Places)
28	122617	GEHL
29	122736	GEHL (2 Places)

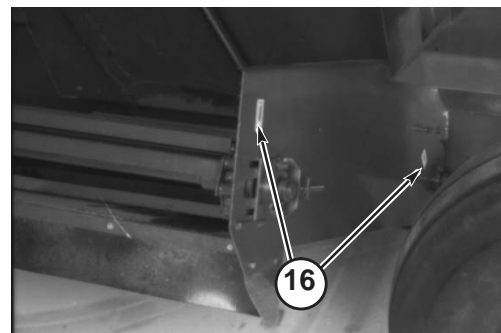
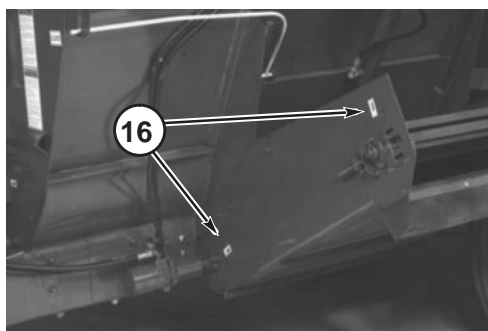
NOTE: *Decal sets vary only by the model number Decals (item 26). * Quantities based on 2-piece Conveyor requirements.*



Rear Master

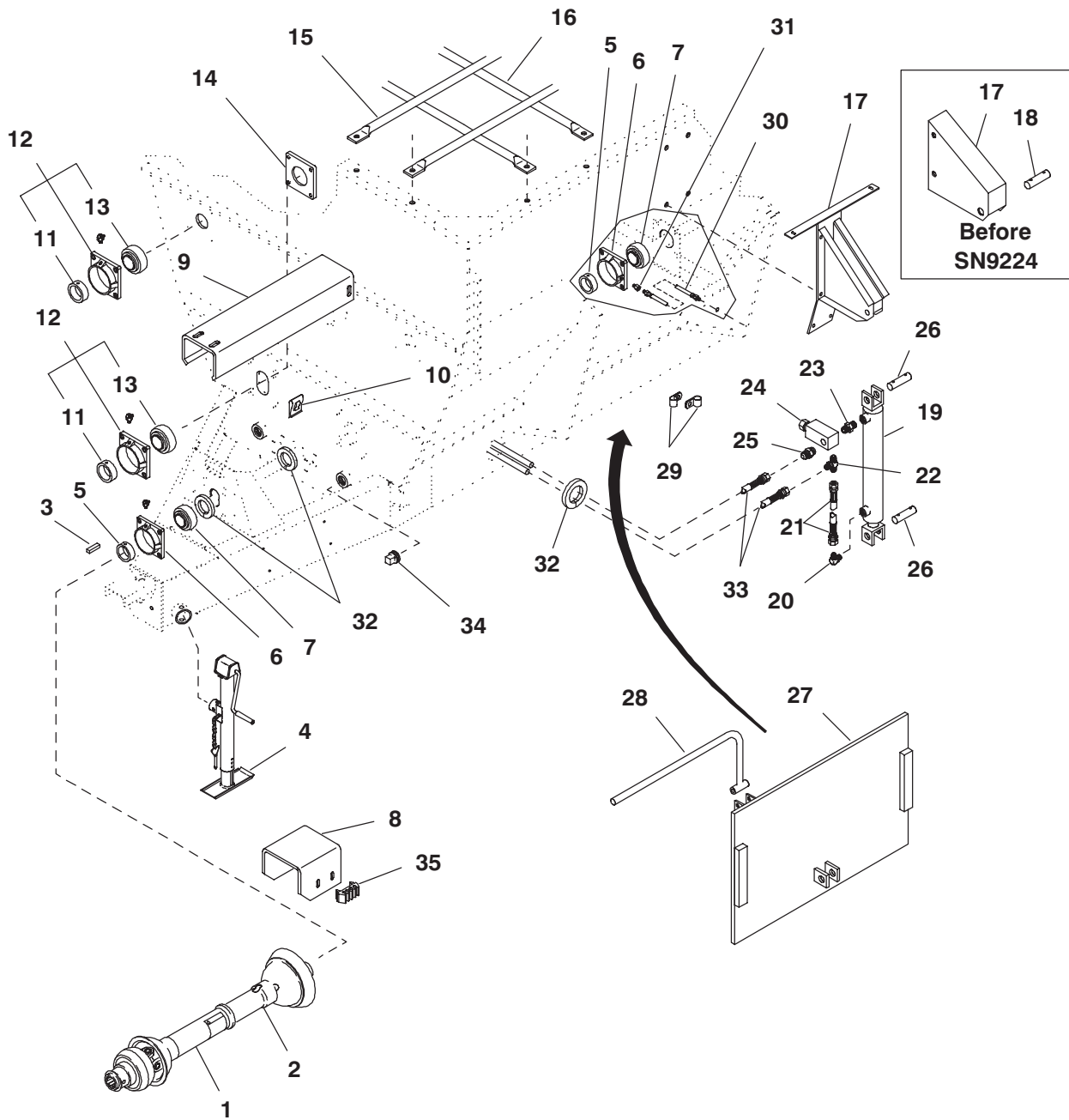


Two-piece Discharge Conveyor



One-piece Discharge Conveyor

MF7210 – PTO, HITCHJACK, GUARDS, DISCHARGE GATE & HYDRAULICS

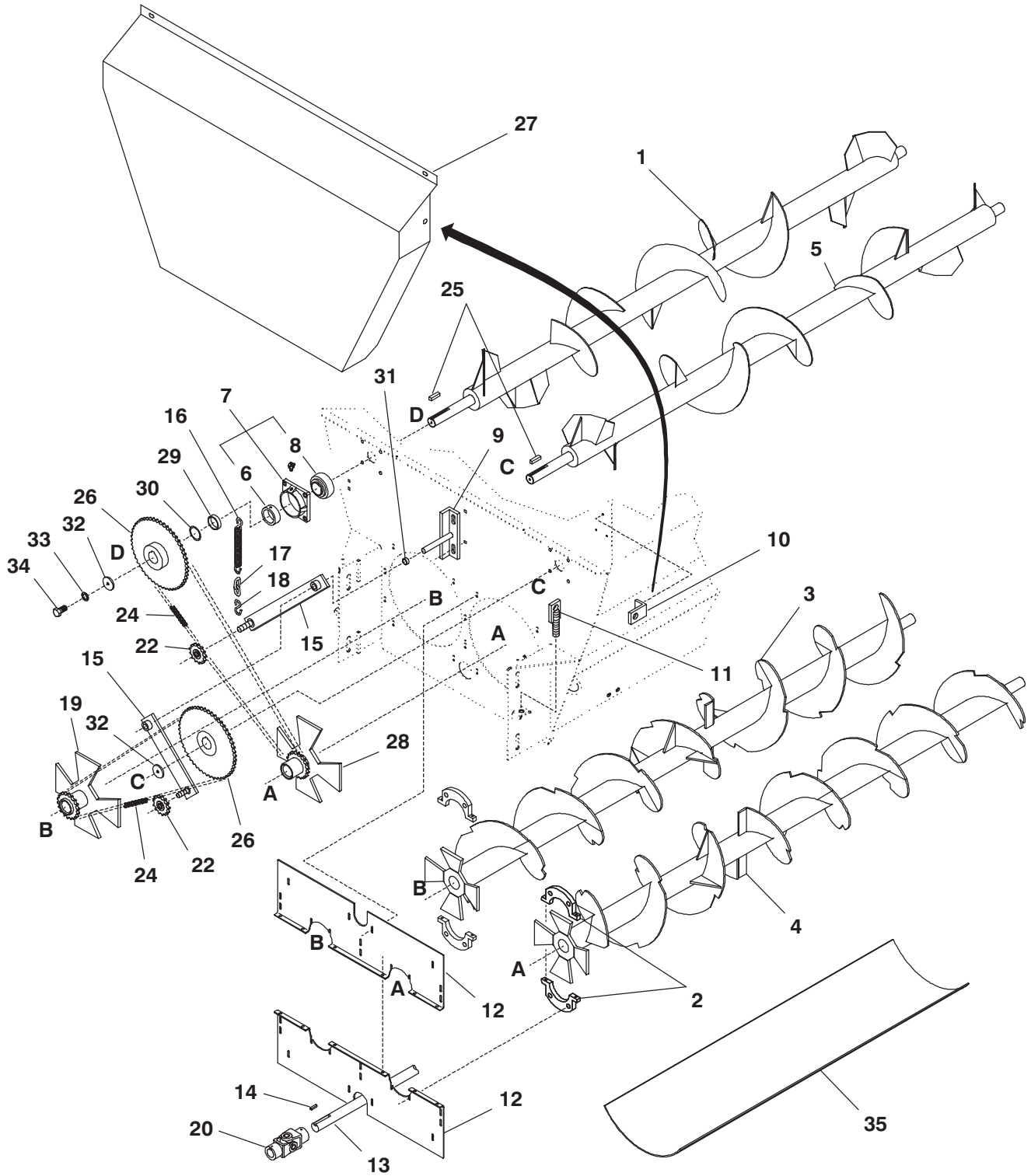


MF7210 – PTO, HITCHJACK, GUARDS, DISCHARGE GATE & HYDRAULICS

Ref. No.	Part No.	Description	Qty. Req.	Ref. No.	Part No.	Description	Qty. Req.
01	092687 _a	PTO SHAFT FRONT HALF	1	18	092637	PIN-CYLINDER MOUNT	1
02	092688 _a	PTO SHAFT REAR HALF	1			(BEFORE SN9224)	
03	009476	KEY/SQUARE 5/16 X 1-1/4	1		655020	CP3/16X1-1/2	2
04	081464 _b	JACK/HITCH	1	19	091882 _d	CYLINDER/HYDRAULIC 2X16	1
05	520153	COLLAR/BEARING	2	20	057650	ELBOW/HYD FITTING 90 DEG	1
06	R13062 _c	HOUSING/BEARING	2	21	091894	HOSE/ASSY 1/4X14-1/2	1
	570014	FITTING/GREASE	2	22	113109	TEE/HYDRAULIC FITTING	1
	650453	CS 1/2X1-1/2 (N,L)	4	23	057653	UNION/HYD FITTING	1
	650569	CS 1/2X1-3/4 (N,L,P)	4	24	091889	VALVE/HYDRAULIC RELIEF	1
07	069387	BEARING/BALL	2	25	062889	UNION/HYD FITTING	1
08	091947	SHIELD/PTO	1	26	092642	HINGE PIN-DOOR	2
	650488	CS 3/8X3/4 (N,L)	4		655020	CP3/16X1-1/2	4
09	092651	PTO SHAFT SHIELD	1	27	092645	DOOR	1
	650485	CS 5/16X5/8 (N,L,8P)	4	28	092670	INDICATOR ROD	1
10	092683	1/4 TINNEMAN CLIP	4		650833	CS 5/16X3 (LN)	1
11	089867	COLLAR/BEARING	4	29	092673	WIRE CLIP AND TUBE CLIP	4
12	091913	FLANGE/BRG ASSY (INCL 11 & 13)	4		061708	CS 1/4X1 (N,L,P)	1
	570014	FITTING/GREASE	4	30	091907	HOSE/ASSY 1/8	1
	650647	CS 5/8X2 (N,L)	16		570006	FITTING/GREASE	1
13	091914	BEARING/BALL	4	31	091896	REDUCER/HYD FITTING	1
14	092640	BACKING PLATE-BEARING	2	32	092666	INSIDE TRIM	3
15	092635	GRID PIPE-LONG	4	33	091895	HOSE 205" LONG	2
	650487	CS 5/16X1 (FLN)	8	34	660007	PIPE PLUG - 2 IN NPT	2
		(BEFORE SN9224)		35	059272	HOLDER/SHEAR BOLT	1
16	092636	GRID PIPE-SHORT	6				
	650487	CS 5/16X1 (FLN)	12				
		(BEFORE SN9224)					
17	094087	BRACKET/MOUNT CYL ASSY	1				
		(AFTER SN9223)					
	092644	CYLINDER MOUNT	1				
		(BEFORE SN9224)					

a) For breakdown, see Components page titled Universal Drive.
b) For breakdown, see Components page titled Hitchjack.
c) For replacement, also order Grease Fitting 570002.
d) For breakdown, see Components page titled Hydraulic Cylinder.

MF7210 – AUGERS, REAR DRIVE & GUARD (AFTER SN8863)



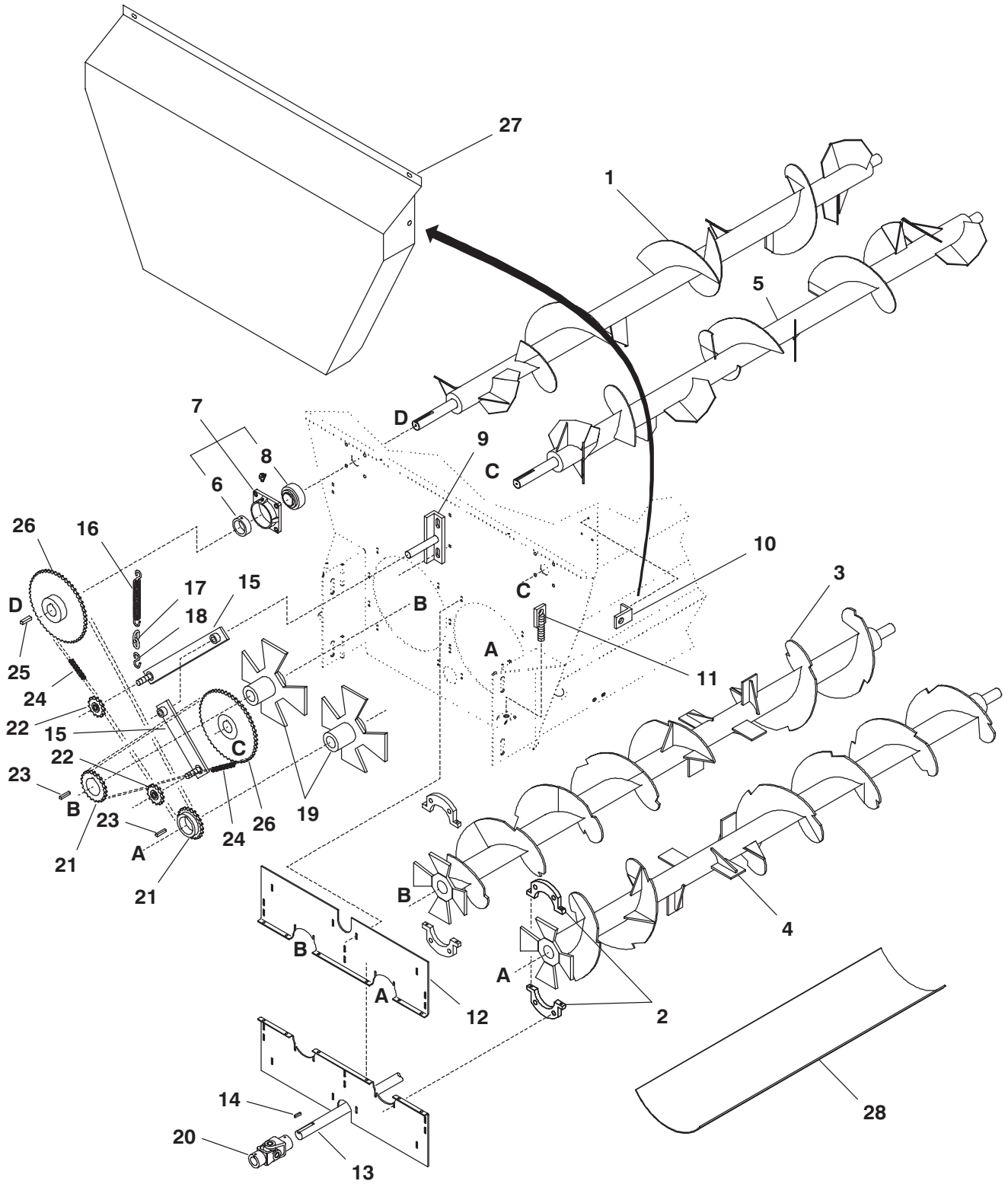
MF7210 – AUGERS, REAR DRIVE & GUARD (AFTER SN8863)

Ref. No.	Part No.	Description	Qty. Req.	Ref. No.	Part No.	Description	Qty. Req.
01	117015 _a	AUGER/TOP LEFT	1	16	092681	SPRING/EXTENSION	2
02	117004	HALF/SEALING WASHER	4	17	092643	CHAIN	2
	650692	CS 5/16X2 (NILN,P)	8	18	B11433A	HOOK-S	2
	B11296	FW 11/32	8	19	117005	STAR/SPLINED ASSY LT	1
	650568	CS 5/16X2 (NILN)	4	20	092674	UNIVERSAL JOINT SERIES 14	1
03	117013 _a	AUGER/BOTTOM ASSY LT	1		650833	CS 5/16X3 (LN)	2
04	117012 _a	AUGER/BOTTOM ASSY RT	1		650212	SHSS-CP3/8X3/8	2
05	117014 _a	AUGER/TOP ASSY RT	1	22	091902	SPROCKET/IDLER #60X13T	2
06	089867	COLLAR/BEARING	2	24	091900	CHAIN/ROLLER (#60) OF 137 LINKS ...	2
07	091913	FLANGE/BRG ASSY (INCL 6 & 8)	2			(INCL ONE 500160 PLAIN CONNECTOR AND ONE 500161 OFFSET LINK)	
	570014	FITTING/GREASE	2	25	117010	KEY/SQUARE 1/2X1-3/4	2
	650647	CS 5/8X2 (N,L)	8	26	117020	SPROCKET/ASSY #60-54T	2
08	091914	BEARING/BALL	2	27	092655	REAR SHIELD	1
09	124107	PLATE/IDLER	1		650448	CS 1/4X3/4 (N,L,4P)	2
	655020	CP3/16X1-1/2	1	28	117006	STAR/SPLINED ASSY RT	1
	650786	CB 3/8X1-1/4 (N,L,P)	2	29	117011	SPACER	6
10	092650	SHIELD BRACKET	2	30	069793	FW 2-1/32	AR
	650448	CS 1/4X3/4 (N,L,P)	1	31	062776	SPACER/SPRING	2
11	092667	BRACKET/ADJUSTMENT ASSY	2	32	063590	FW 13/32	2
		(4) 3/4 N		33	654026	LW 3/8	2
12	092647	PANEL/ADJUSTMENT	2	34	650491	CS 3/8X1-1/4	2
	650487	CS 5/16X1 (N,L,16P)	8	35	095114 _b	LINER/TROUGH 7200	4
	650545	CS 5/16X1-1/4 (N,L,32P)	16				
13	092654	LINE SHAFT	1				
14	009476	KEY/SQUARE 5/16X1-1/4	1				
15	092669	ARM/IDLER ASSY	2				

a) For individual replacement parts, see Components page titled Augers.

b) Each section of Trough Liner is 18 x 60". Four sections are required to reline the entire Trough.

MF7210 – AUGERS, REAR DRIVE & GUARD (BEFORE SN8864)

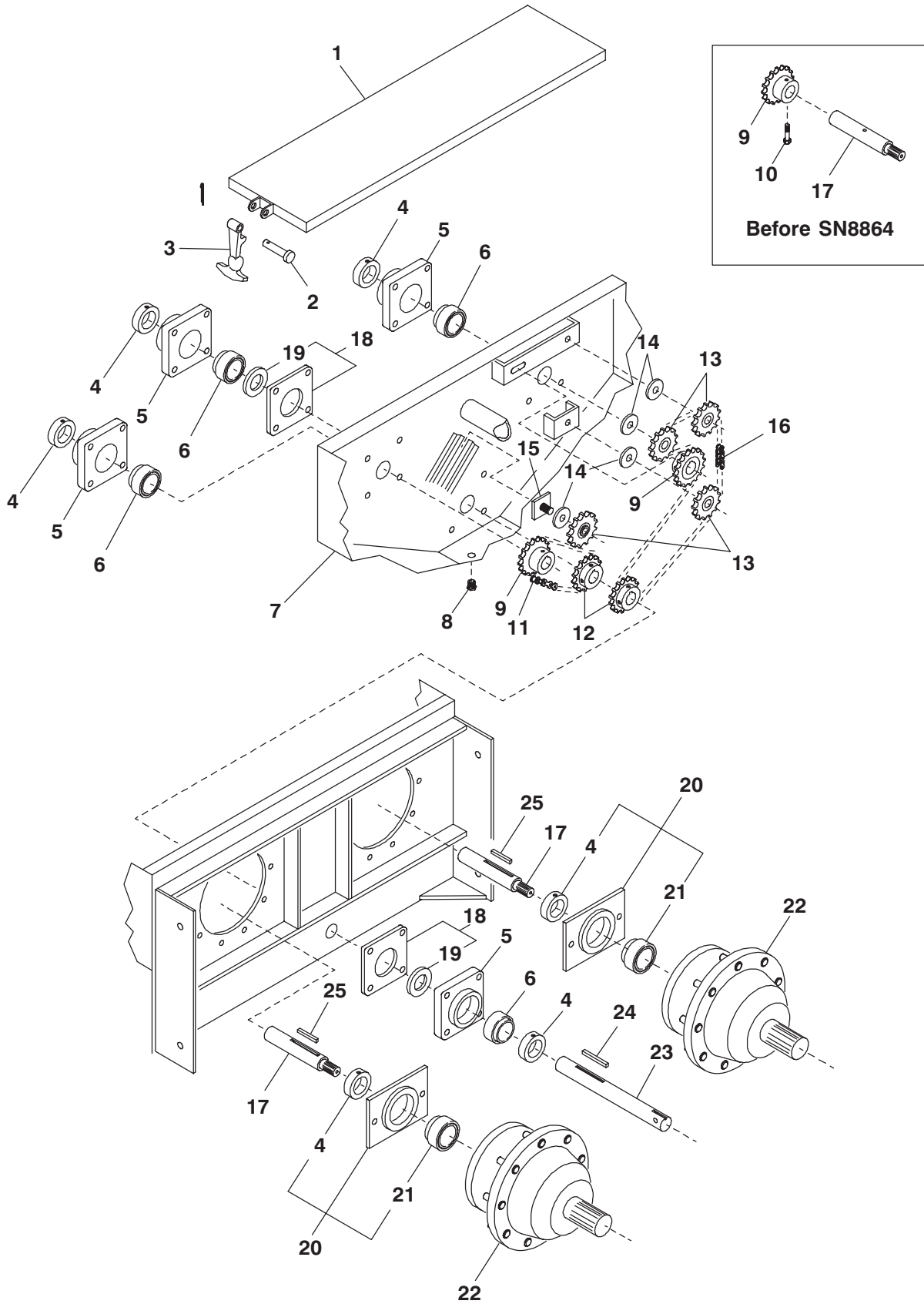


MF7210 – AUGERS, REAR DRIVE & GUARD (BEFORE SN8864)

Ref. No.	Part No.	Description	Qty. Req.	Ref. No.	Part No.	Description	Qty. Req.
01	092639 _b	AUGER – TOP LEFT	1	16	092681	SPRING/EXTENSION	2
02	092641 _a	SEALING WASHER	4	17	092643	CHAIN	2
	650568	SHCS 5/16X2 (N,L)	4	18	B11433A	S – HOOK	2
03	092653 _b	AUGER – BOTTOM LEFT	1	19	092648	SPLINED STAR COUPLER	2
04	092652 _b	AUGER – BOTTOM RIGHT	1	20	092674	UNIVERSAL JOINT SERIES 14	1
05	092638 _b	AUGER – TOP RIGHT	1		650833	CS 5/16X3 (LN)	2
06	089867	COLLAR/BEARING	2		650212	SHSS–CP 3/8X3/8	2
07	091913	FLANGE/BRG ASSY (INCL 6 & 8)	2	21	092649	SPROCKET/21T #60	2
	570014	FITTING/GREASE	2		650214	SHSS–CP 3/8X1/2	2
	650647	CS 5/8X2 (N,L)	8	22	091902	SPROCKET IDLER #60X13T	2
08	091914	BALL BEARING	2	23	091963	KEY/SQUARE 3/8X2	2
09	092668	IDLER BRACKET	1	24	091900	CHAIN (#60) OF 137 LINKS (INCL ONE 500160 PLAIN CONNECTOR AND ONE 500161 OFFSET LINK)	2
	655020	CP 3/16X1–1/2	1		052191	KEY/SQUARE 1/2X2	2
	650786	CB 3/8X1–1/4 (N,L,P)	2	25	091904	SPROCKET #60X50T	2
10	092650	SHIELD BRACKET	2	26	092655	REAR SHIELD	1
	650448	CS 1/4X3/4 (N,L,P)	1		650448	CS 1/4X3/4 (N,L,4P)	2
11	092667	BRACKET/ADJUSTMENT ASSY (4) 3/4 N	2	27	095114 _c	LINER/TROUGH 7200	4
12	092647	PANEL/ADJUSTMENT	2				
	650487	CS 5/16X1 (N,L,16P)	8				
	650545	CS 5/16X1–1/4 (N,L,32P)	16				
13	092654	LINE SHAFT	1				
14	009476	KEY/SQUARE 5/16X1–1/4	1				
15	092669	ARM/IDLER ASSY	2				

- a) For replacement order 124975 Sealing Washer Kit which includes all mounting hardware. Order 2 Kits per machine.
- b) For individual replacement parts, see Components page titled Augers.
- c) Each section of Trough Liner is 18 x 60". Four sections are required to reline the entire Trough.

MF7210 – CHAINCASE

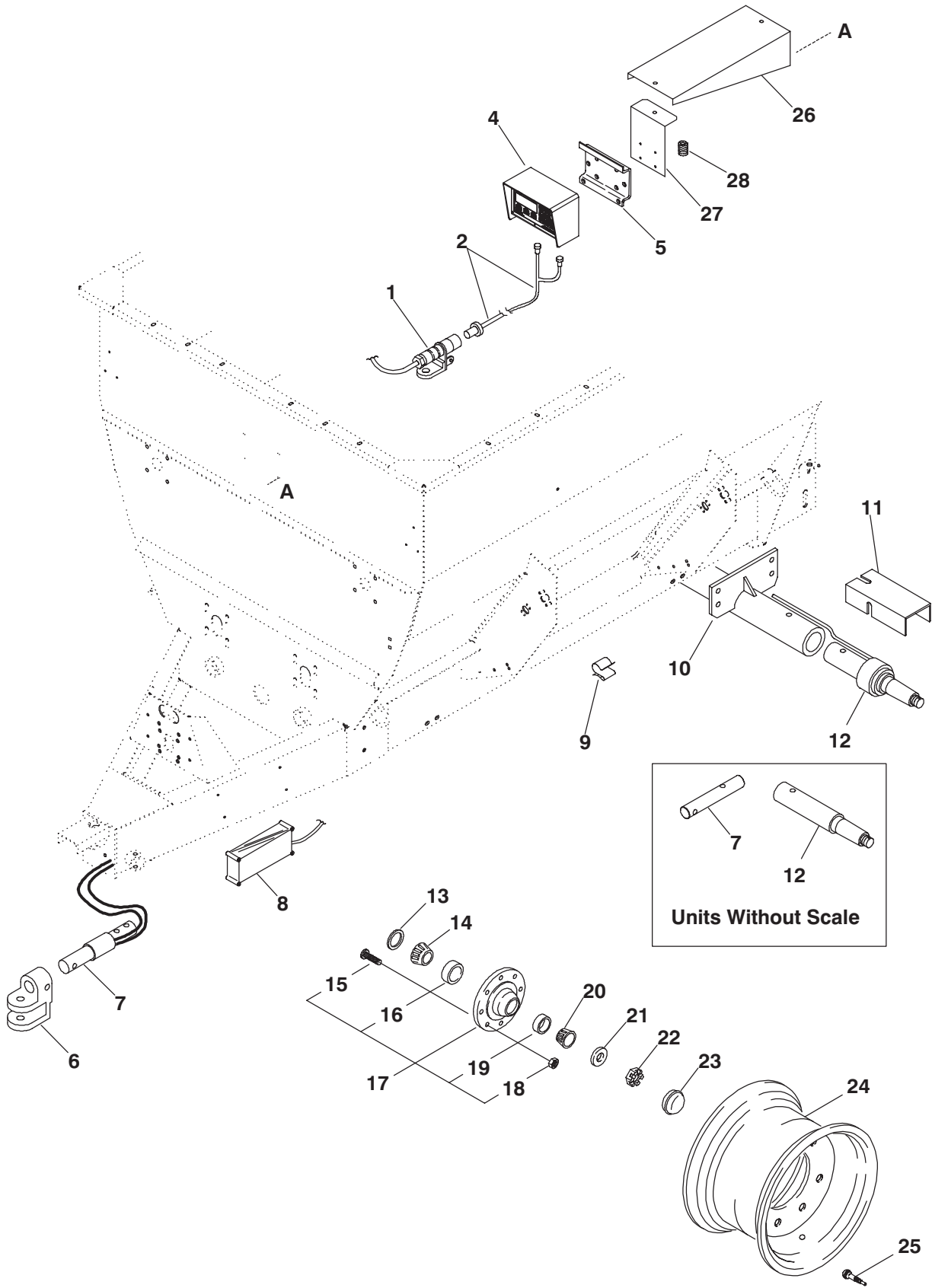


MF7210 – CHAINCASE

Ref. No.	Part No.	Description	Qty. Req.	Ref. No.	Part No.	Description	Qty. Req.
01	092662	COVER	1	15	092657	IDLER STUD (1) 5/8 LN (3) 5/8 P	1
02	092665	PIN/CLEVIS3/16X1-5/8	2	16	091883	CHAIN (80 LINKS #60) (INCL ONE 500160 PLAIN CONNECTOR)	1
	650590	PIN/COTTER 1/16X1/2	2	17	097895	SHAFT/DRIVE POWER HEAD (AFTER SN8863)	2
03	091899	HOOK/RUBBER	2		092656	DRIVE SHAFT (BEFORE SN8864)	2
04	520153	COLLAR/BEARING	6	18	092660	SEAL PLATE ASSY (INCL 19)	2
05	R13062 _a	HOUSING/BEARING	4	19	053961	SEAL/OIL	1
	570014	FITTING/GREASE	2	20	092658	BEARING PLATE ASSY (INCL 4 & 21) CS 1/2X1 (L)	2
	650569	CS 1/2X1-3/4 (N,L)	16	21	520208	BEARING/CYLINDRICAL	2
06	069387	BEARING/BALL	4	22	092664 _c	POWERHEAD #6 (16.88:1) BOLT/WHEEL (9/16 N-F,L)	2
07	124105	CHAIN CASE (AFTER SN8863)	1		041879	NUT 9/16-18 UNF	18
	092661	CHAIN/CASE ASSY T REAR (BEFORE SN8864)	1		651107	(AFTER SN9631) CS 1/2X1-3/4 GR. 8 (N,L)	18
	650163	CS 3/4X1-3/4 (LN,P)	4	23	124124	SHAFT/INPUT (AFTER SN8863)	1
08	660004	PLUG/PIPE 1/2	1		092663	INPUT SHAFT (BEFORE SN8864)	1
09	097957	SPROCKET/ASSY 16T (AFTER SN8863)	2	24	009477	KEY/SQUARE 5/16X2-1/2	1
	092659	SPROCKET #60X17T (BEFORE SN8864)	2	25	060757	KEY/SQUARE 5/16X1-1/2 (AFTER SN8863)	2
10	092784 _b	SHEAR BOLT 5/16X3 GR2 (LN) (BEFORE SN8864)	2				
11	069084	CHAIN/ROLLER (51 LINKS #60) (INCL ONE 500160 PLAIN CONNECTOR AND ONE 500161 OFFSET CONNECTOR)	1				
12	091906	SPROCKET #60X15T	2				
13	091902	SPROCKET IDLER #60X13T CS 5/8X2-1/4 (LN)	4				
	650710		3				
14	654012	FW 5/8	AR				

- a) For replacement, also order Grease Fitting 570002.
- b) For replacement Shear Bolts, order Kit 904388 containing 8 Bolts & Lock Nuts.
- c) For individual, parts, see Components page titled Powerhead.

MF7210 – AXLES, WHEELS, SCALE & WEIGHBAR



MF7210 – AXLES, WHEELS, SCALE & WEIGHBAR

Ref. No.	Part No.	Description	Qty. Req.	Ref. No.	Part No.	Description	Qty. Req.
01	600798	SOCKET – TRACTOR ASSY	1	15	078657	BOLT/WHEEL 5/8 (AFTER SN8693)	16
02	093030	POWER CORD – 2–WIRE	1				
04	093031	INDICATOR/MODEL 5	1		041879	BOLT/WHEEL 9/16 (BEFORE SN8694)	16
	092685	INDICATOR/MODEL 10	1				
	112518	INDICATOR/MODEL 1500	1	16	520213	CUP/BEARING INNER	2
	112519	INDICATOR/MODEL 2100	1	17	083100	HUB W/CUPS,STUDS & NUTS	2
	112520	INDICATOR/MODEL 3200	1	18	079152	NUT/WHEEL 5/8 (AFTER SN8693)	16
	650815	RHMS #10–24X3/4 (N)	2		047542	NUT/LUG 9/16 (BEFORE SN8694)	16
05	092684	BRACKET/INDICATOR MTG	1				
06	092680	CLEVIS 1–7/8	1	19	092671	CUP OUTER	2
	650709	CS 3/4X4 (N,L)	1	20	092691	CONE OUTER	2
07	091888	CELL, 1.88–16 – HITCH	1	21	066717	FW 31/32	2
	092774	BAR/HITCH (FOR UNIT WITHOUT SCALE)	1		655012	CP 1/8X1–3/4	2
	650709	CS 3/4X4 (N,L)	1	22	653102	NUT 7/8 SLOTTED	2
08	093807	BOX/JUNCTION BOX 15 FT CORD	1	23	058421	CAP/DUST	2
	651056	RHMS #8–32X3/4	4	24	079718 ^{ab}	WHEEL W11C X 16.1	2
09	092675	CLIP – CABLE, FRAME	AR		004123 ^c	WHEEL, W8B–20	2
10	092672	AXLE – BOLT–ON	1	25	045581	VALVE/TIRE	2
	650495	CS 1/2X1–1/4 (N,L)	8	26	092797	SUPPORT/INDICATOR	1
11	092646	WEIGH BAR SHIELD	2		650488	CS 3/8X3/4 (N,L)	4
	650495	CS 1/2X1–1/4 (N,L)	8	27	092798	BRACKET/INDICATOR	1
12	091887	CELL, 2.0 DA–11 SPINDLE	2		650542	CS 1/4X1/2 (N,L)	4
	092773	SPINDLE/AXLE (UNIT W/O SCALE)	2	28	055342	SPRING/COMPRESSION	1
	650498	CS 1/2X6 (N,4P)	2		650644	CS 1/2X3 (NILN,2P)	1
13	604328	SEAL – HUB	2				
14	520214	CONE/BEARING INNER	2				

a) For replacement order 112443.

b) For use with 16.5L X 16.1 8–ply tires.

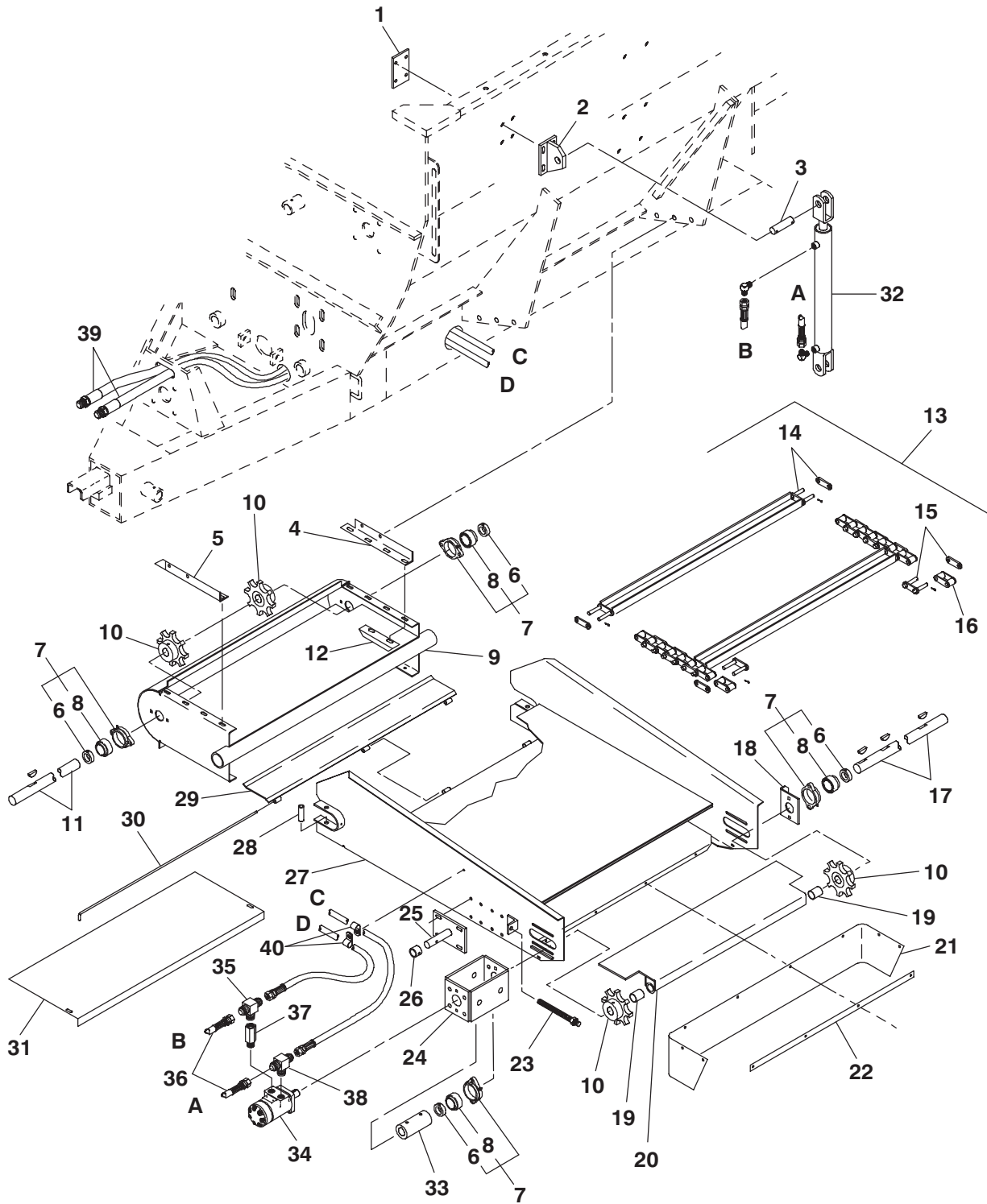
c) For use with 10.00 x 20" 12–ply recapped tires (ribbed implement on truck carcass).

MF7210 – ONE-PIECE DISCHARGE CONVEYOR

Ref. No.	Part No.	Description	Qty. Req.	Ref. No.	Part No.	Description	Qty. Req.
01	092602	STRAP-DEFLECTOR	1	15	091886	LINK/HALF	AR
	650448	CS 1/4X3/4 (N,L)	4	16	092779	LINK/STEEL W/PINS	AR
02	092603	DEFLECTOR-BELT	1	17	092608	SLAT W/LINK & PINS	6
	650448	CS 1/4X3/4 (N,L,P)	4	18	092607	CONVEYOR CHAIN ASS'Y	1
03	091892	BUSHING	2	19	091908	COUPLER-SHAFT	1
04	091893	SPROCKET 8T	4		650513	KEY/WOODRUFF 1/4X1	1
	650513	KEY/WOODRUFF 1/4X1	3		650201	SHSS 5/16X5/16	2
05	092610	ADJ. FLOOR PLATE ASSY	1	20	042057	COUPLER/PLAIN (EARLY STYLE)	1
	570014	FITTING/GREASE	2	21	092619	HYD MOTOR MOUNT	1
06	520084	COLLAR/LOCK	4			(LATE STYLE)	
07	091923	FLANGE/BEARING (INCL 6 & 8)	4		092612	MOUNT-ORBITAL MOTOR	1
	570009	FITTING/GREASE	4			(EARLY STYLE)	
	650533	CS 3/8X1-1/2 (N,L,4P)	8		650060	CS 3/8X1 (L)	4
08	042903	BEARING/BALL	4	22	065500 _a	MOTOR/HYDRAULIC	1
09	092601	BEARING ADJ. PLATE	2		650513	KEY/WOODRUFF 1/4X1	1
10	092600	THREADED ROD (4N 1/2)	2	23	660039	ELBOW/STREET	2
11	092611	CONVEYOR SHAFT-UPPER	1	24	091901	CHECK VALVE 1/2 DIA	1
12	092605	CONVEYOR	1	24	067457	VALVE/HYDRAULIC CHECK (1/2 DIA)	1
	650490	CS 3/8X1 (N,L,2P)	6	25	091897	HOSE 135" LONG	2
13	092604	DUMP PLATE, CONVEYOR	1				
	650487	CS 5/16X1 (N,L,P)	4				
14	092606	SHAFT, CONVEYOR	1				

a) Char-Lynn, 101-1005-009. For components, see page titled Hydraulic Motor.

MF7210 – TWO-PIECE DISCHARGE CONVEYOR

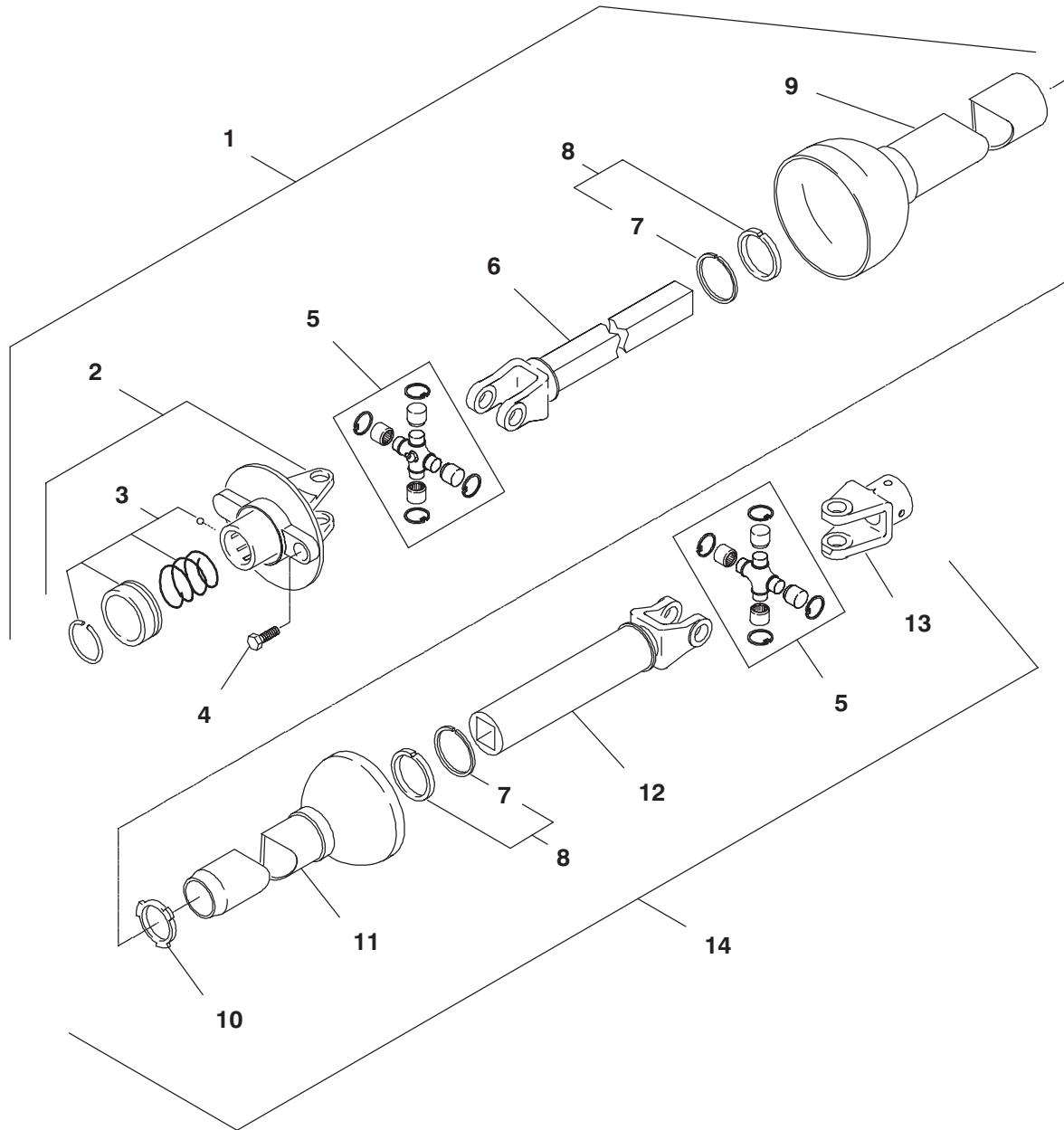


MF7210 – TWO–PIECE DISCHARGE CONVEYOR

Ref. No.	Part No.	Description	Qty. Req.	Ref. No.	Part No.	Description	Qty. Req.
01	092626	BACKING PLATE CONV. CYL.	1	23	092600	THREADED ROD (4N 1/2)	2
	071381	CS 3/8X1 FULL THD (N,L,P)	4	24	092619	MOTOR MOUNT	1
02	092621	CYLINDER LIFT BRACKET	1	25	092618	CYLINDER SUPPORT	1
03	092622	CYLINDER HINGE PIN	1		650490	CS 3/8X1 (N,L,P)	4
	655022	PIN/COTTER 3/16X1–3/4	2	26	092627	CYLINDER RETAINER	1
04	092628	CONVEYOR MOUNT R.H.	1		650692	CS 5/16X1–3/4 (N,L)	1
	650490	CS 3/8X1 (N,L)	2	27	092617	UPPER CONVEYOR	1
05	092629	CONVEYOR MOUNT L.H.	1		570014	FITTING/GREASE	2
	650490	CS 3/8X1 (N,L)	2	28	092625	PIVOT RETAINER TUBE	2
06	520084	COLLAR/BEARING	4		650594	CS 1/2X3–1/4 (LN)	2
07	091923	FLANGED BEARING	4	29	092631	PIVOT PLATE	1
	570009	FITTING/GREASE	4	30	092630	PIVOT SHAFT	1
	071381	CS 3/8X1 FULL THD (N,L)	4		650551	PIN/COTTER 3/32X3/4	1
	650533	CS 3/8X1–1/2 (N,L,P)	4	31	092624	BOTTOM PLATE LOW. CONV.	1
08	042903	BEARING	4	32	091882 _a	CYLINDER/HYDRAULIC 2X16	1
09	092615	LOWER CONVEYOR	1	33	091908	COUPLER–SHAFT	1
	650060	CS 3/8X1 (N,L,8P)	4		650513	KEY/WOODRUFF 1/4X1	1
10	091893	SPROCKET 8T	4		650201	SHSS 5/16X5/16	2
	650513	KEY/WOODRUFF 1/4X1	3	34	065500 _b	MOTOR/HYDRAULIC	1
11	092616	DRIVE SHAFT LOWER CONV.	1		650513	KEY/WOODRUFF 1/4X1	1
12	092623	CHAIN GUIDE	2		650490	CS 3/8X1 (L)	4
	650533	CS 3/8X1–1/2 (N,L,8P)	4	35	067769	FITTING/TEE	2
13	092634	CONVEYOR CHAIN ASS'Y	1	36	062404	HOSE HYDRAULIC	2
14	092608	SLAT W/LINK & PINS	9	37	067457	VALVE/HYDRAULIC CHECK	1
15	092779	LINK/STEEL W/PINS	AR	38	062405	ELBOW/MALE 1/2	2
16	091886	LINK/HALF	AR	39	092632	HOSE/ASSY 195"	2
17	092620	DRIVE SHAFT–UPPER	1	40	048967	CLAMP/INSULATED HOSE	2
18	092601	BEARING ADJ. PLATE	1		650426	CS 1/4X1–1/4 (N,L,2P)	1
19	091892	BUSHING	2				
20	092610	ADJ. FLOOR PLATE ASSY	1				
21	092603	DEFLECTOR–BELT	1				
	650448	CS 1/4X3/4 (N,L,P)	4				
22	092602	STRAP–DEFLECTOR	1				
	650448	CS 1/4X3/4 (N,L)	4				

a) For components, see page titled Hydraulic Cylinder.
b) Char–Lynn, 101-1005-009. For components, see page titled Hydraulic Motor.

MF7210 – COMPONENTS, UNIVERSAL DRIVE

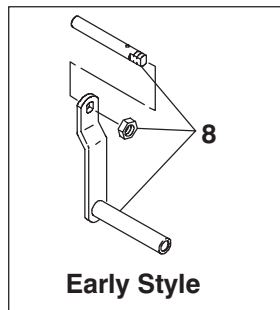
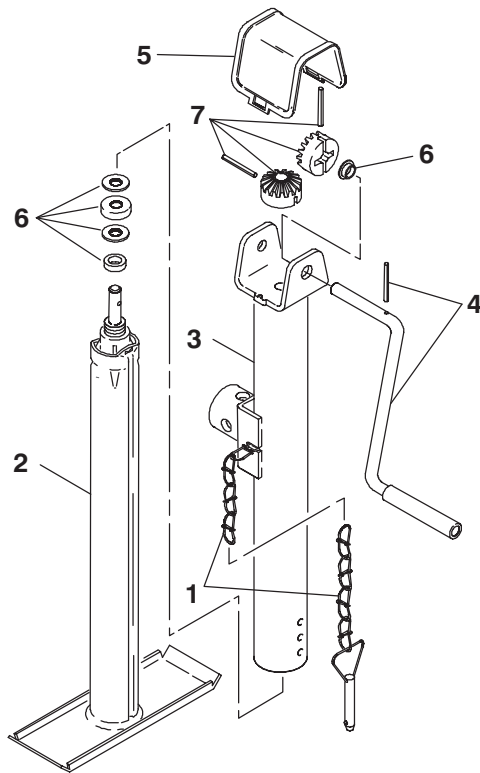


Ref. No.	Part No.	Description	Qty. Req.	Ref. No.	Part No.	Description	Qty. Req.
01	092687	PTO SHAFT/FRONT HALF	1	08	095130	KIT/REPAIR	2
02	092709	BALL SHEAR ASSEMBLY YOKE	1	09	092710 _b	GUARD/OUTER (FRONT)	1
	650557	CS 3/8x1/2	1	10	510215	CENTRALIZER/NYLON	1
03	086925	KIT/SLIDE LOCK REPAIR	1	11	092712 _b	GUARD/INNER (REAR)	1
04	069066 _a	SHEAR BOLT 1/4X1 GR5 (LN)	1	12	092713	JOINT/W/SQ. TUBE	1
05	510114	KIT/CROSS	2	13	092714	YOKE/IMPLEMENT END	1
	570009	FITTING/GREASE	2	14	092688	PTO SHAFT/REAR HALF	1
06	092711	JOINT/W/SQ. SHAFT	1				
07	510100	RETAINER/BEARING	2				

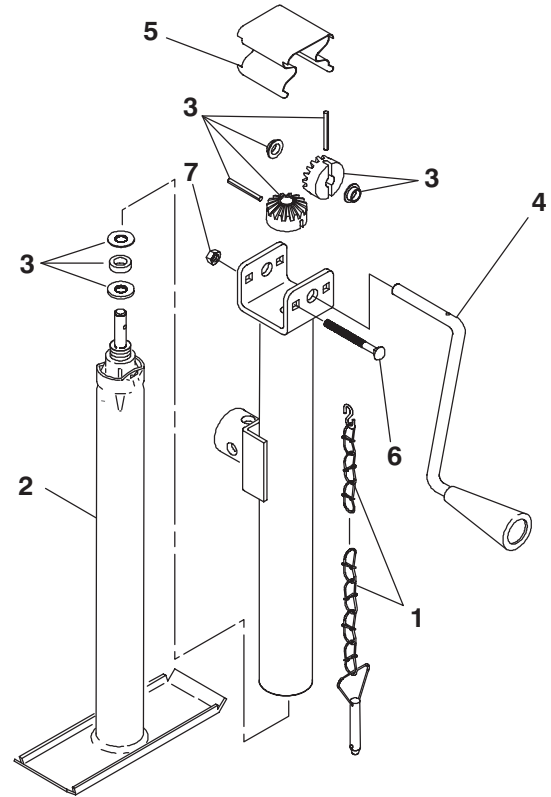
a) For replacement Shear Bolts, order Kit 904400 containing 8 Bolts & LN.
 b) Includes Bearing Retainer 510100.

MF7210 – COMPONENTS, HITCHJACK

081464 Hitchjack – Wesbar



081464 Hitchjack – Hammerblow



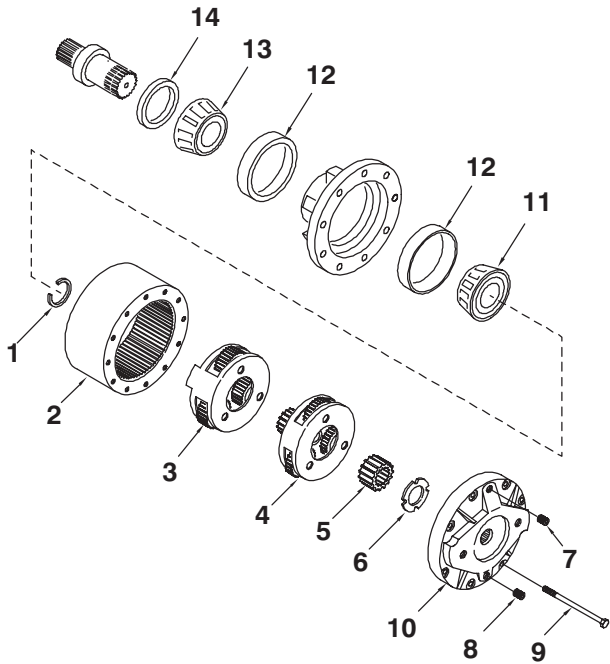
Ref. No.	Part No.	Description	Qty. Req.
	081464	JACK/ASSY – WESBAR	1
		CONSISTS OF:	
01	061276	PIN & CHAIN	1
02	081462	TUBE/INNER ASSY	1
03	081465	TUBE/OUTER ASSY	1
04	126735	CRANK/JACK (LATER STYLE)	1
	081463 _a	HANDLE/ASSY (EARLY STYLE)	1
05	077838	CAP/TOP	1
06	094283	KIT/INTERNAL PARTS	1
07	077836	KIT/GEAR	1
08	077839 _a	SHAFT/CROSS.....	1

Ref. No.	Part No.	Description	Qty. Req.
	081464	JACK/ASSY – HAMMERBLOW	1
		CONSISTS OF:	
01	061276	PIN & CHAIN	1
02	117915	SW INNER TUBE ASSY 13.5	1
03	117916	SW FINAL ASSY KIT #5	1
04	117917	CRANK ASSY SW	1
05	117918	GEAR BOX COVER	1
06	652142	CB 1/4X3	1
07	653005	HN 1/4	1

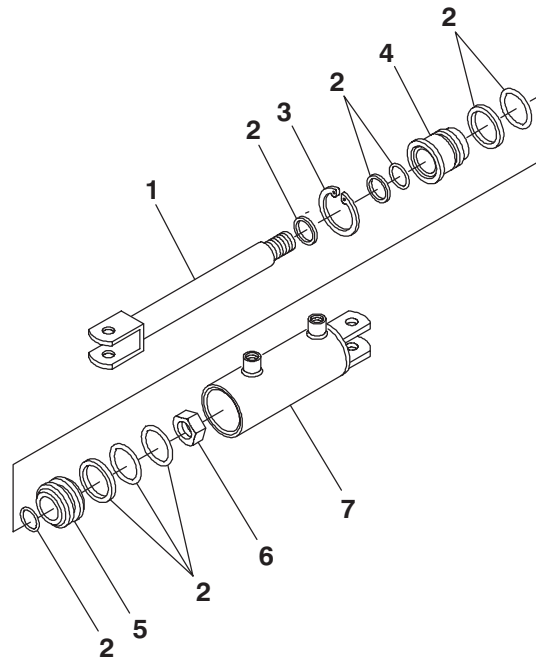
a) Replaced by 126735 later style Handle.

MF7210 – COMPONENTS, POWERHEAD & HYDRAULIC CYLINDER

092664 Powerhead



091882 Hydraulic Cylinder

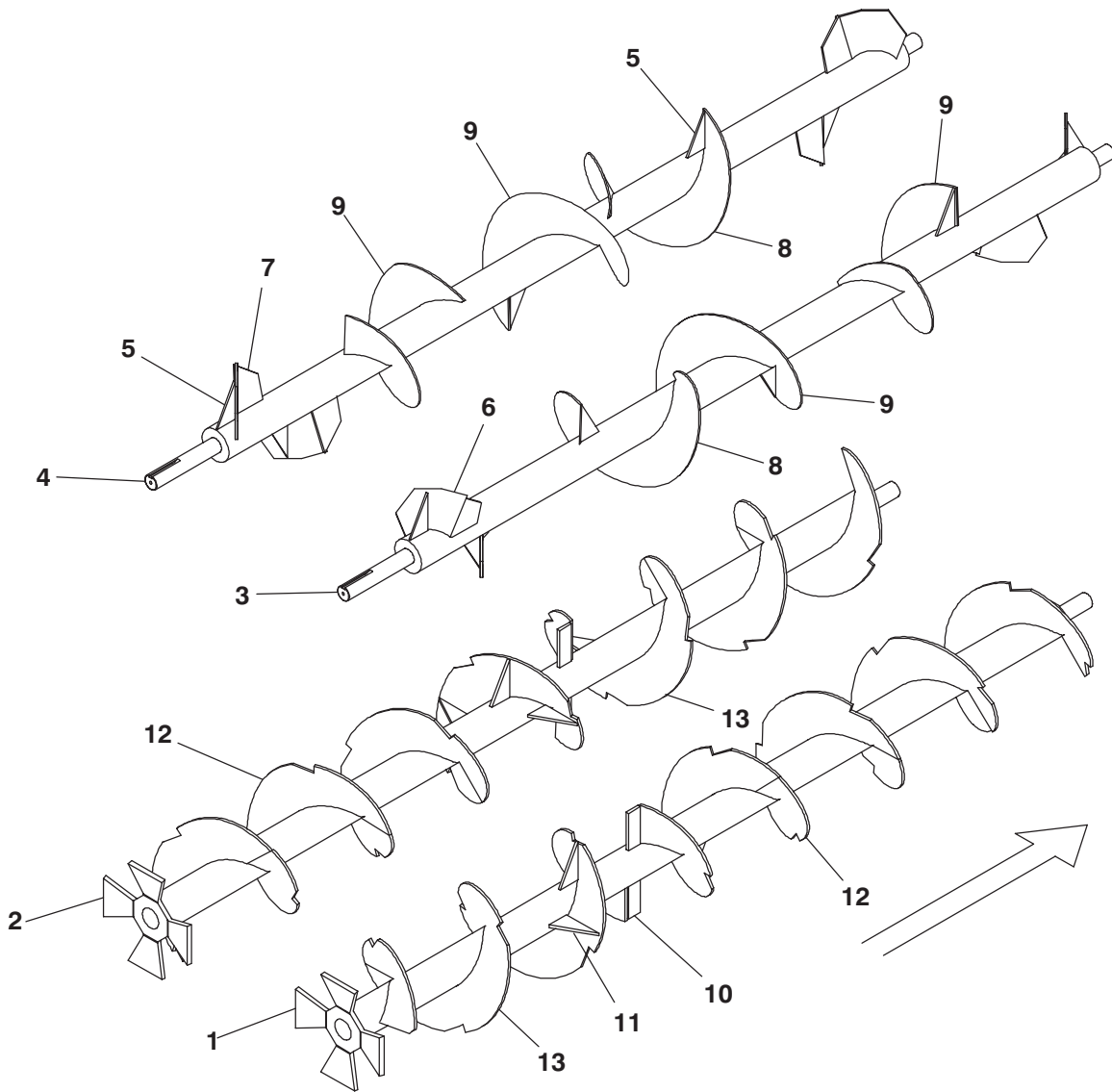


Ref. No.	Part No.	Description	Qty. Req.
	092664	POWERHEAD #6	1
		CONSISTS OF:	
01	092943 _a	KIT/THRUST WASHER RET	1
02	080300	RING GEAR	1
03	080297	CARRIER/SECONDARY ASSY	1
04	080296	CARRIER/PRIMARY ASSY	1
05	080299	GEAR/SUN	1
06	080303	WASHER/THRUST	1
07	660004	PLUG/PIPE 1/2	1
08	057569	PLUG/MAGNETIC PIPE	1
09	650545	CS5/16-18X1-1/4	8
10	080298	COVER	1
11	078945	BEARING/CONE	1
12	078946	BEARING/CUP	2
13	010-32292	BEARING/CONE	1
14	089176	SEAL/OIL	1

Ref. No.	Part No.	Description	Qty. Req.
	091882	CYLINDER/HYDRAULIC	1
		CONSISTS OF:	
01	094291	SHAFT & CLEVIS	1
02	089693	KIT/SEAL	1
03	089689	RING/SNAP	1
04	089691	HEAD/HYD CYL	1
05	089690	PISTON/HYD CYL	1
06	073788	NUT/LOCK	1
07	094290	BARREL/HYD CYLINDER	1

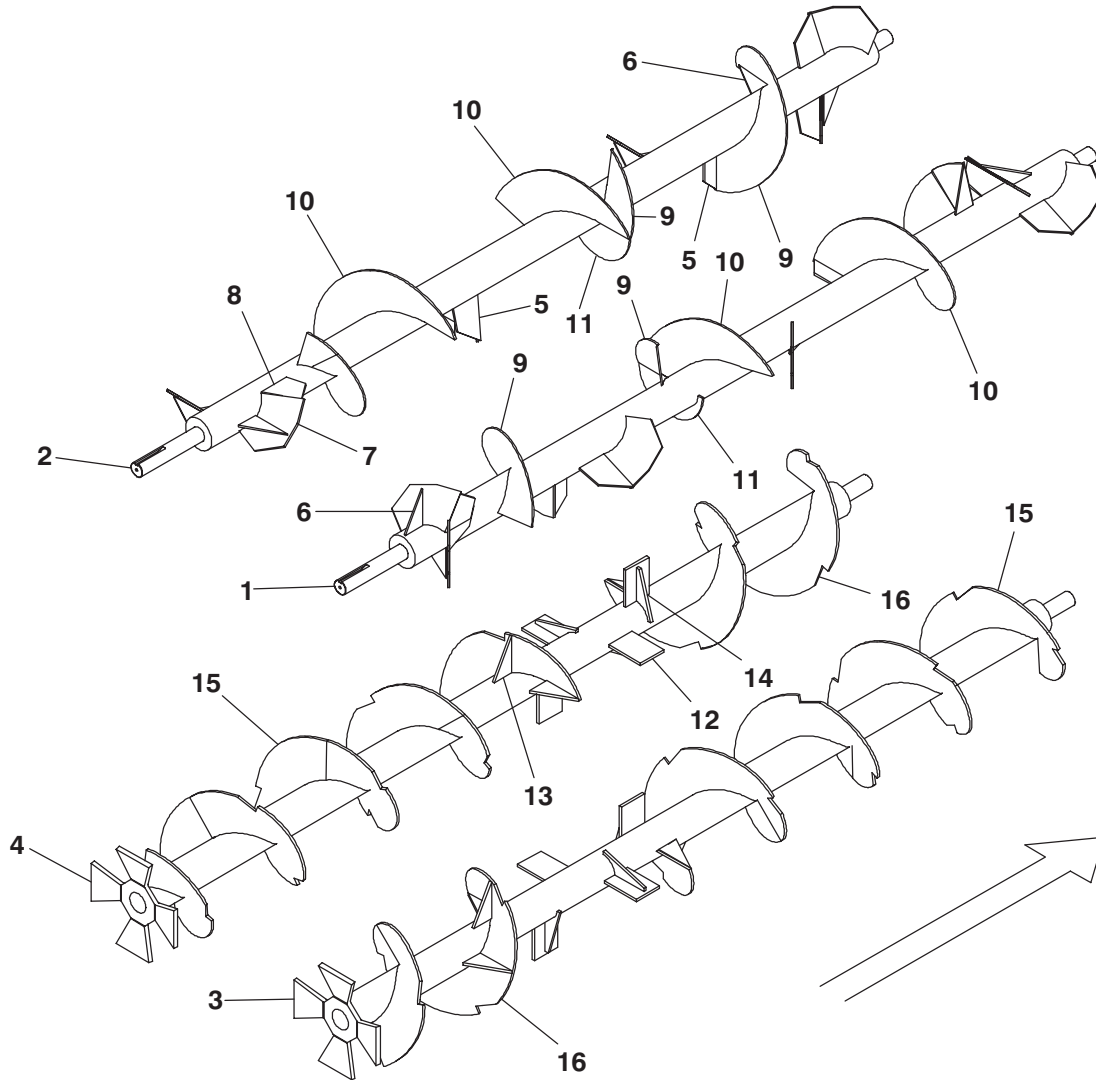
a) Select the widest Snap Ring that matches groove in Shaft.

MF7210 – COMPONENTS, AUGERS (AFTER SN8863)



Ref. No.	Part No.	Description	Qty. Req. Per Auger	Ref. No.	Part No.	Description	Qty. Req. Per Auger
01	117012 _a	AUGER/BOTTOM ASSY RT	1	10	093625	PADDLE/UNLOADING	2
02	117013 _a	AUGER/BOTTOM ASSY LT	1	11	099079	GUSSET/AUGER BOTTOM	6
03	117014 _b	AUGER/TOP ASSY RT	1	12	099081 _c	FLIGHT SECT NOTCHED RT	4
04	117015 _b	AUGER/TOP ASSY LT	1	13	099082 _c	FLIGHT SECT NOTCHED LT	3
05	099073	GUSSET/AUGER TOP	7	a) The Bottom Augers each use a total of 2 of 093625, 6 of 099079, 4 of 099081 and 3 of 099082. b) The Top Augers each use a total of 7 of 099073, 4 of 099074, 4 of 099075, 1 of 099076 and 2 of 099077. c) The Flighting Section profile and length may have to be trimmed to be an exact replacement in the location being repaired. Use the old Flighting as a template.			
06	099074	PADDLE/AUGER	4				
07	099075	PADDLE/SUPPORT	4				
08	099076 _c	FLIGHT/SECT 1/4 LT	1				
09	099077 _c	FLIGHT/SECT 1/4 RT	2				

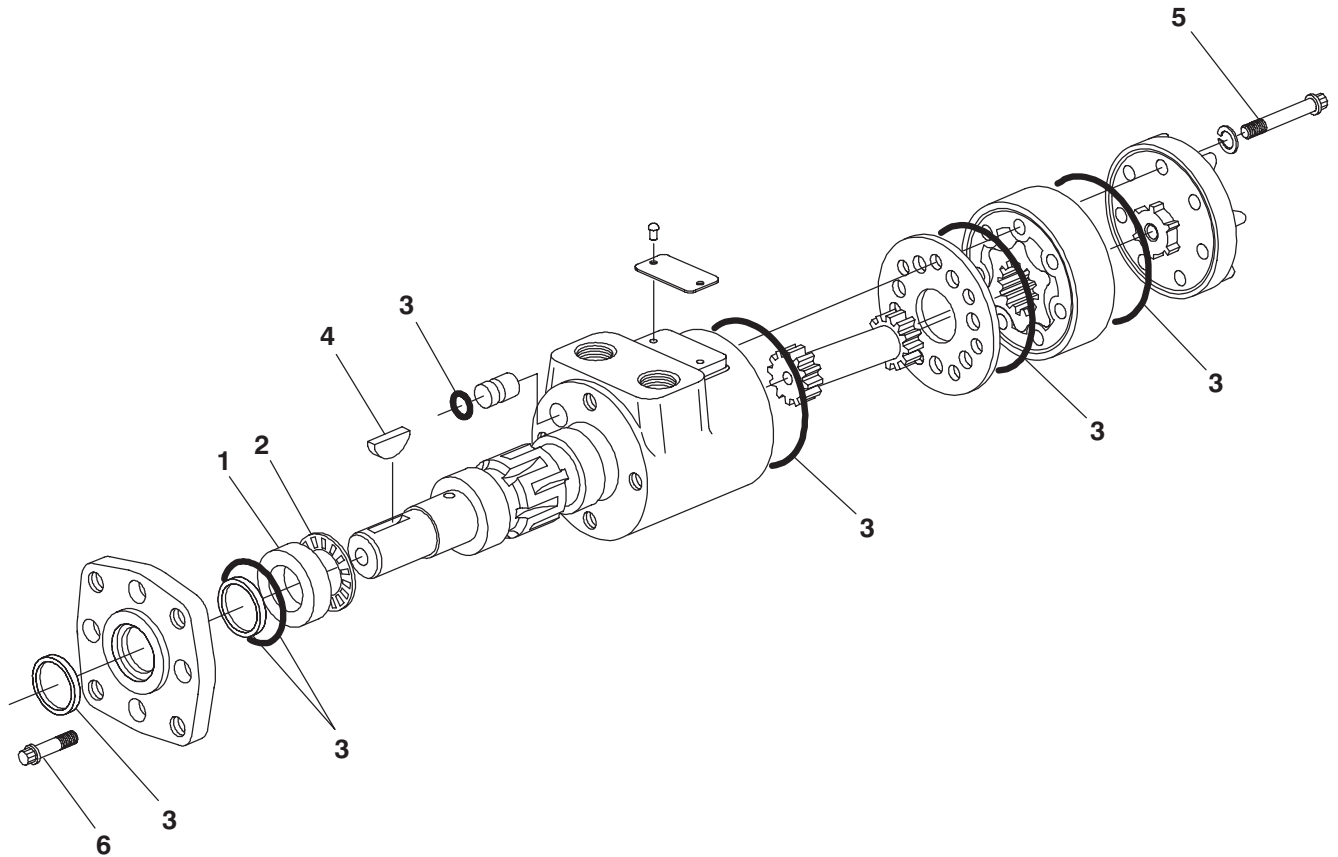
MF7210 – COMPONENTS, AUGERS (BEFORE SN8864)



Ref. No.	Part No.	Description	Qty. Req. Per Auger	Ref. No.	Part No.	Description	Qty. Req. Per Auger
01	092638 _a	AUGER – TOP RIGHT	1	12	099078	PADDLE/UNLOADING	4
02	092639 _a	AUGER – TOP LEFT	1	13	099079	GUSSET/AUGER BOTTOM	6
03	092652 _b	AUGER – BOTTOM RIGHT	1	14	099080	PADDLE/GUSSET AUGER BOT	4
04	092653 _b	AUGER – BOTTOM LEFT	1	15	099081 _c	FLIGHT SECT NOTCHED RT	5
05	099072	AUGER/PADDLE BOTTOM	2	16	099082 _c	FLIGHT SECT NOTCHED LT	2
06	099073	GUSSET/AUGER TOP	8	<p>a) The Top Augers each use a total of 2 of 099072, 8 of 099073, 6 of 099074, 6 of 099075, 1 of 099076, 2 of 099077 and 1 of 115999.</p>			
07	099074	PADDLE/AUGER	6	<p>b) The Bottom Augers each use a total of 4 of 099078, 6 of 099079, 4 of 099080, 5 of 099081 and 2 of 099082.</p>			
08	099075	PADDLE/SUPPORT	6	<p>c) The Flighting Section profile and length may have to be trimmed to be an exact replacement in the location being repaired. Use the old Flighting as a template.</p>			
09	099076 _c	FLIGHT/SECT 1/4 LT	1				
10	099077 _c	FLIGHT/SECT 1/4 RT	2				
11	115999	CURVE/FLIGHTING	1				

MF7210 – COMPONENTS, HYDRAULIC MOTOR

065500 Hydraulic Motor

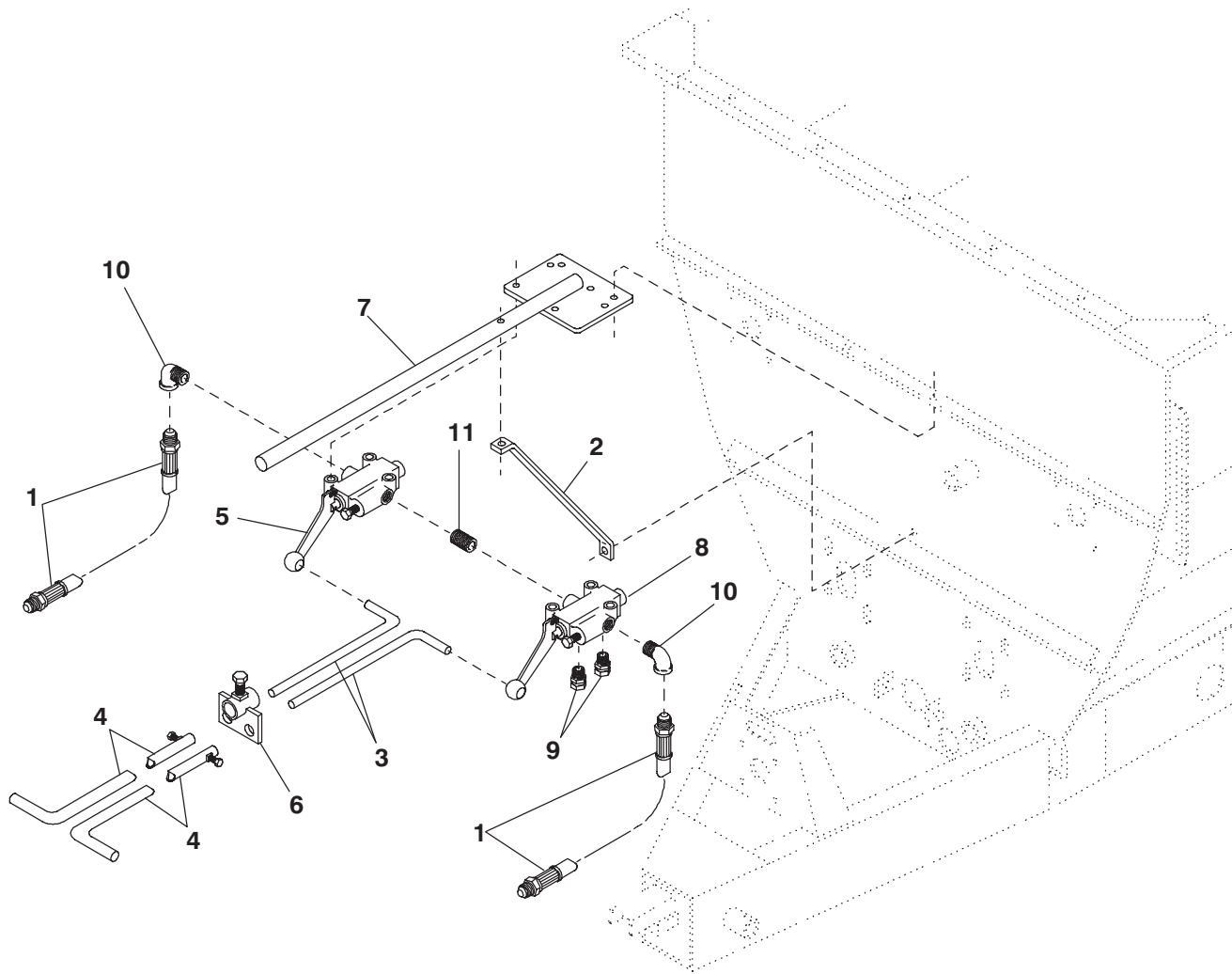


Ref. No.	Part No.	Description	Qty. Req.	Ref. No.	Part No.	Description	Qty. Req.
	065500	MOTOR/HYDRAULIC	1	04	650513	KEY/WOODRUFF 1/4X1	1
		CONSISTS OF:		05	650373	12-PT CS 5/16X1-3/4 NF	7
01	049498	RACE/BEARING	1	06	650927	12-PT CS 5/16X7/8 NF	4
02	049499	WASHER/THRUST	1				
03	093519 _a	KIT/SEAL	1				

a) The Seal Kit includes all required Seals, O-Rings, sealant and an instruction sheet.

MF7210 – ACCESSORIES

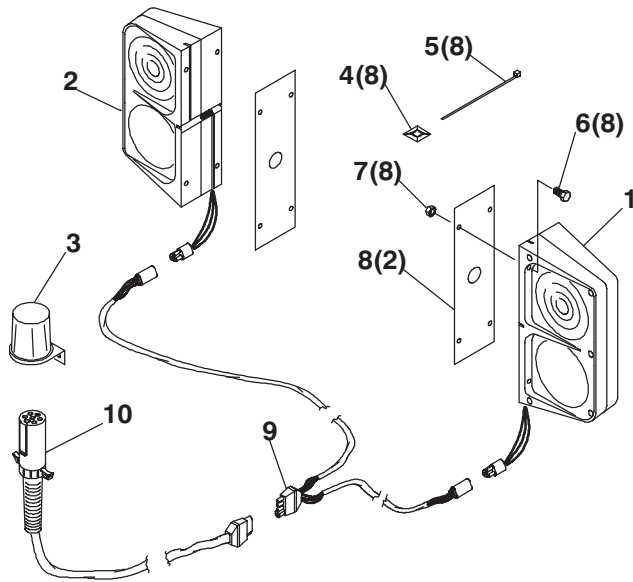
804570 Single Valve Conversion Kit



Ref. No.	Part No.	Description	Qty. Req.	Ref. No.	Part No.	Description	Qty. Req.
	804570	SINGLE VALVE CONVERSION	1	07	092705	VALVE MOUNT	1
		CONSISTS OF:			650490	CS 3/8X1 (N,L)	3
01	067848	HOSE/ASSY (96" LONG)	2	08	110853 ^a	VALVE/DETENT W/3 POSITIONS	1
02	092323	BRACE/INDICATOR	1		650579	CS 3/8X1-3/4 (N,L,P)	3
	650528	CS 3/8X2 (N,L)	1	09	580058	UNION/HYD FITTING	2
03	092700	HANDLE/VALVE	2	10	660014	ELBOW/PIPE REDUCING	2
	655006	PIN/COTTER 1/8X1	2	11	660058	NIPPLE/CLOSE 3/4 NPT	1
04	092701	HANDLE/CONSOLE	2	12	091442 ^b	DECAL/DANGER ROTATING AUGER	1
05	092702	HYDRAULIC VALVE	1	13	093653 ^b	DECAL/WARNING ROT DR LN	1
	650579	CS 3/8X1-3/4 (N,L,P)	3				
06	092704	HANGER	1				
	650485	CS 5/16X5/8	1				

a) 110853 is NOT stocked as a repair part. To repair Valve, order 092702 Valve and 092703 Detent Kit separately.
 b) Included with the Kit but NOT shown; refer to Decal Locations information for proper location.

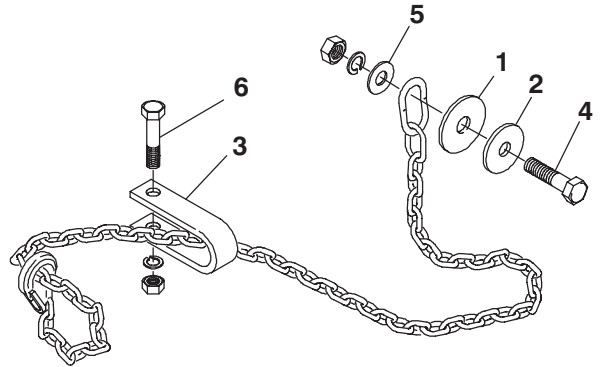
806252 Transport Lights



Ref. No.	Part No.	Description	Qty. Req.
	806252	LIGHTS/SM MIX-FEEDER TOW	1
CONSISTS OF:			
01	112884 _c	LIGHT/TRANSPORT LT	1
02	112885 _c	LIGHT/TRANSPORT RT	1
03	112886	HOLDER	1
04	125946	BASE/MOUNTING	8
05	055648	TIE/WIRE	8
06	650426	CS 1/4X1-1/4	8
07	071401	NUT/NYLON INSERT LOCK 1/4	8
08	112706	SUPPORT/LIGHT	2
09	113252	HARNESS/"Y" 17' LT & 17' RT	1
10	112888 _d	HARNESS/PRIMARY 10'	1

c) For replacement Bulb, purchase #1157 locally. For replacement Amber Lens, order 112914. For replacement Red Lens, order 112915. For replacement Blank Bezel, order 112916.
 d) For replacement Plug with Spring order 112917.

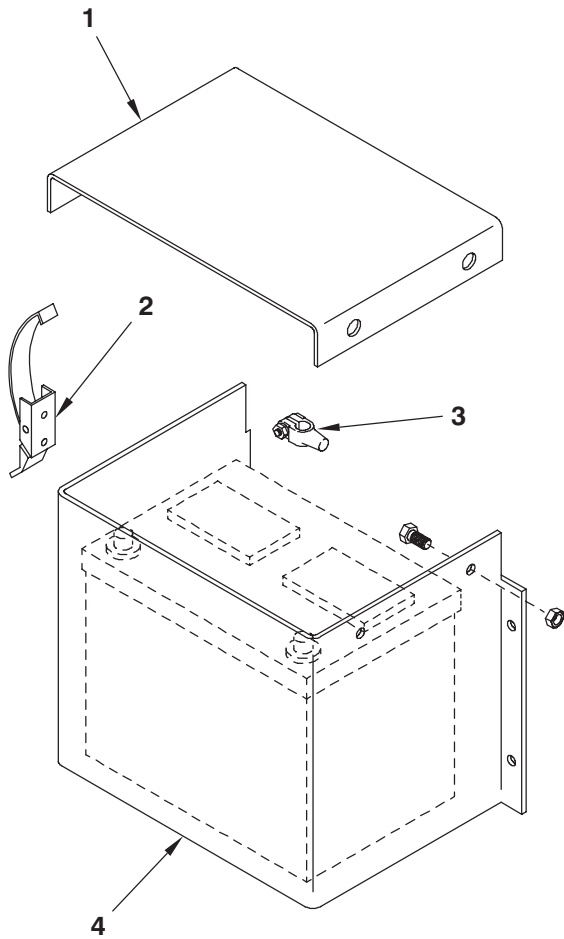
803098 Safety Tow Chain 10 Ton



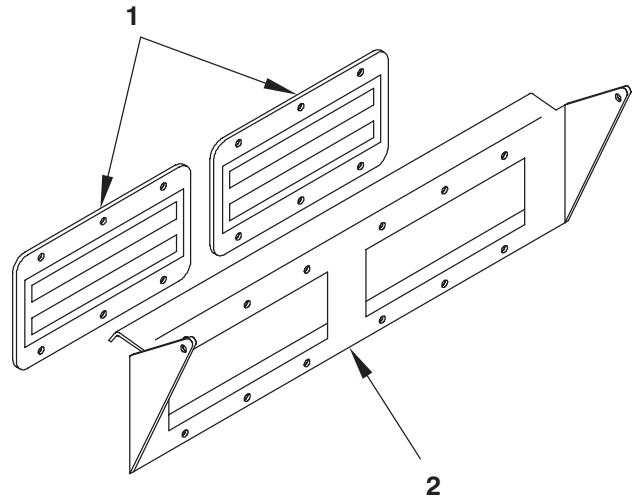
Ref. No.	Part No.	Description	Qty. Req.
	803098	CHAIN/SAFETY TOW 10 TON	1
CONSISTS OF:			
01	043912	WASHER	1
02	069076	WASHER	1
03	080894	CLEVIS	1
04	650172	CS 3/4X3-1/4 (N,L)	1
05	650695	CS 5/8X3-1/2 (N,L)	1
06	654014	WASHER/PLAIN WIDE 3/4	1

MF7210 – ACCESSORIES

804569 Battery Box

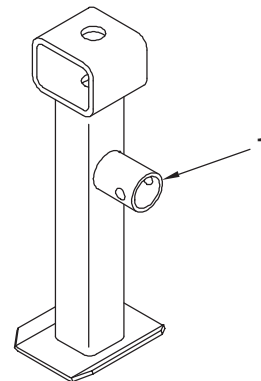


804568 Magnet Assembly



Ref. No.	Part No.	Description	Qty. Req.
	804568	MAGNET ASSY	1
		CONSISTS OF:	
01	092693	MAGNET – CONVEYOR	2
	650945	RHMS 1/4X3/4 (N,L)	12
02	092692	MAGNET PLATE	1
	650490	CS 3/8X1 (LN,2P)	2

805436 3-Point Scale Stand



Ref. No.	Part No.	Description	Qty. Req.
	804569	BATTERY BOX	1
		CONSISTS OF:	
01	092707	BATTERY BOX COVER	1
	650487	CS 5/16X1 (LN)	2
02	092708	LATCH/OVER CENTER	1
	650387	RHMS #10–32X1/2 (N,L)	2
03	068244	BATTERY CLAMP	2
04	092706	BATTERY BOX	1
	650490	CS 3/8X1 (N,L)	4

Ref. No.	Part No.	Description	Qty. Req.
	805436	STAND/MF 3 POINT SCALE	1
		CONSISTS OF:	
01	094135	STAND/3-POINT SCALE ASSY	1

Notes

Notes

MF7210 - NUMERICAL INDEX

Part No.	Page No.	Ref. No.	Part No.	Page No.	Ref. No.	Part No.	Page No.	Ref. No.	Part No.	Page No.	Ref. No.
B11296	09	02	068244	28	03	091887	15	12	092608	19	14
B11433A	09	18	069066	20	04	091888	15	07	092608	17	17
B11433A	11	18	069076	27	02	091889	07	24	092610	17	05
R13062	13	05	069084	13	11	091892	17	03	092610	19	20
R13062	07	06	069387	13	06	091892	19	19	092611	17	11
004123	15	24	069387	07	07	091893	17	04	092612	17	21
009476	07	03	069793	09	30	091893	19	10	092615	19	09
009476	09	14	071401	27	07	091894	07	21	092616	19	11
009476	11	14	073788	22	06	091895	07	33	092617	19	27
009477	13	24	077836	21	07	091896	07	31	092618	19	25
041879	15	15	077838	21	05	091897	17	25	092619	17	21
041879	13	22	077839	21	08	091899	13	03	092619	19	24
042057	17	20	078657	15	15	091900	09	24	092620	19	17
042903	17	08	078945	22	11	091900	11	24	092621	19	02
042903	19	08	078946	22	12	091901	17	24	092622	19	03
043912	27	01	079152	15	18	091902	13	13	092623	19	12
045581	15	25	079718	15	24	091902	09	22	092624	19	31
047542	15	18	080296	22	04	091902	11	22	092625	19	28
048967	19	40	080297	22	03	091904	11	26	092626	19	01
049498	25	01	080298	22	10	091906	13	12	092627	19	26
049499	25	02	080299	22	05	091907	07	30	092628	19	04
052191	11	25	080300	22	02	091908	17	19	092629	19	05
053961	13	19	080303	22	06	091908	19	33	092630	19	30
055342	15	28	080894	27	03	091913	09	07	092631	19	29
055648	27	05	081462	21	02	091913	11	07	092632	19	39
057569	22	10	081463	21	04	091913	07	12	092634	19	13
057650	07	20	081464	21		091914	09	08	092635	07	15
057653	07	23	081464	07	04	091914	11	08	092636	07	16
058421	15	23	081465	21	03	091914	07	13	092637	07	18
059272	07	35	083100	15	17	091923	17	07	092638	24	01
060757	13	25	086925	20	03	091923	17	07	092638	11	05
061276	21	01	089176	22	14	091947	19	07	092639	11	01
061276	21	01	089689	22	03	091947	07	08	092639	24	02
062404	19	36	089690	22	05	091963	11	23	092640	07	14
062405	19	38	089691	22	04	092323	26	02	092641	11	02
062776	09	31	089693	22	02	092600	17	10	092642	07	26
062889	07	25	089867	09	06	092600	19	23	092643	09	17
063590	09	32	089867	11	06	092601	17	09	092643	11	17
065500	25		089867	07	11	092601	19	18	092644	07	17
065500	17	22	091442	26	12	092602	17	01	092645	07	27
065500	19	34	091882	22		092602	19	22	092646	15	11
066717	15	21	091882	07	19	092603	17	02	092647	09	12
067457	17	24	091882	19	32	092603	19	21	092647	11	12
067457	19	37	091883	13	16	092604	17	13	092648	11	19
067769	19	35	091886	17	15	092605	17	12	092649	11	21
067848	26	01	091886	19	16	092606	17	14	092650	09	10
						092607	17	18	092650	11	10




MF7210 - NUMERICAL INDEX

Part No.	Page No.	Ref. No.	Part No.	Page No.	Ref. No.	Part No.	Page No.	Ref. No.	Part No.	Page No.	Ref. No.
092651	07	09	092700	26	03	099076	23	08	125946	27	04
092652	24	03	092701	26	04	099076	24	09	126735	21	04
092652	11	04	092702	26	05	099077	23	09	510100	20	07
092653	11	03	092704	26	06	099077	24	10	510114	20	05
092653	24	04	092705	26	07	099078	24	12	510215	20	10
092654	09	13	092706	28	04	099079	23	11	520084	17	06
092654	11	13	092707	28	01	099079	24	13	520084	19	06
092655	09	27	092708	28	02	099080	24	14	520153	13	04
092655	11	27	092709	20	02	099081	23	12	520153	07	05
092656	13	17	092710	20	09	099081	24	15	520208	13	21
092657	13	15	092711	20	06	099082	23	13	520213	15	16
092658	13	20	092712	20	11	099082	24	16	520214	15	14
092659	13	09	092713	20	12	110853	26	08	580058	26	09
092660	13	18	092714	20	13	112518	15	04	600798	15	01
092661	13	07	092773	15	12	112519	15	04	604328	15	13
092662	13	01	092774	15	07	112520	15	04	650172	27	04
092663	13	23	092779	19	15	112706	27	08	650335	13	22
092664	22		092779	17	16	112884	27	01	650373	25	05
092664	13	22	092784	13	10	112885	27	02	650426	27	06
092665	13	02	092797	15	26	112886	27	03	650491	09	34
092666	07	32	092798	15	27	112888	27	10	650513	25	04
092667	09	11	092943	22	01	113109	07	22	650545	22	09
092667	11	11	093030	15	02	113252	27	09	650695	27	05
092668	11	09	093031	15	04	115999	24	11	650815	15	04
092669	09	15	093519	25	03	117004	09	02	650927	25	06
092669	11	15	093625	23	10	117005	09	19	651107	13	22
092670	07	28	093653	26	13	117006	09	28	652142	21	06
092671	15	19	093807	15	08	117010	09	25	653005	21	07
092672	15	10	094087	07	17	117011	09	29	653102	15	22
092673	07	29	094135	28	01	117012	23	01	654012	13	14
092674	09	20	094283	21	06	117012	09	04	654014	27	06
092674	11	20	094290	22	07	117013	23	02	654026	09	33
092675	15	09	094291	22	01	117013	09	03	660004	13	08
092680	15	06	095114	09	35	117014	23	03	660004	22	07
092681	09	16	095114	11	28	117014	09	05	660007	07	34
092681	11	16	095130	20	08	117015	09	01	660014	26	10
092683	07	10	097895	13	17	117015	23	04	660039	17	23
092684	15	05	097957	13	09	117020	09	26	660058	26	11
092685	15	04	099072	24	05	117915	21	02	803098	27	
092687	07	01	099073	23	05	117916	21	03	804568	28	
092687	20	01	099073	24	06	117917	21	04	804569	28	
092688	07	02	099074	23	06	117918	21	05	804570	26	
092688	20	14	099074	24	07	124105	13	07	805436	28	
092691	15	20	099075	23	07	124107	09	09	806252	27	
092692	28	02	099075	24	08	124124	13	23	010-32292	22	13
092693	28	01									

TORQUE SPECIFICATIONS

NOTE: Use these torque values when tightening **GEHL** hardware (excluding: Locknuts and Self-tapping, Thread Forming and Sheet Metal Screws) unless specified otherwise.

**All torque values are in Lb-Ft except those marked with an * which are Lb-In
(For metric torque value Nm, multiply Lb-Ft value by 1.355 or Lb-In value by 0.113)**

Unified National Thread	Grade 2 		Grade 5 		Grade 8 	
	Dry	Lubed	Dry	Lubed	Dry	Lubed
8-32	19*	14*	30*	22*	41*	31*
8-36	20*	15*	31*	23*	43*	32*
10-24	27*	21*	43*	32*	60*	45*
10-32	31*	23*	49*	36*	68*	51*
1/4-20	66*	50*	9	75*	12	9
1/4-28	76*	56*	10	86*	14	10
5/16-18	11	9	17	13	25	18
5/16-24	12		19	14		20
3/8-16	20	15	30	23	45	35
3/8-24	23	17	35	25	50	
7/16-14	32	24	50	35	70	55
7/16-20	36	27	55	40	80	60
1/2-13	50	35	75	55	110	80
1/2-20	55	40	90	65	120	90
9/16-12	70	55	110	80	150	110
9/16-18	80	60	120	90	170	130
5/8-11	100	75	150	110	220	170
5/8-18	110	85	180	130	240	180
3/4-10	175	130	260	200	380	280
3/4-16	200	150	300	220	420	320
7/8-9	170	125	430	320	600	460
7/8-14	180	140	470	360	660	500
1-8	250	190	640	480	900	680
1-14	270	210	710	530	1000	740

Attaching Hardware

Size & Description	Part Number	Size & Description	Part Number	Size & Description	Part Number	Size & Description	Part Number
#6 L	654044	1/4 LN	071700	3/8 JN	653038	1/2 N	653018
#6-32 N	650658	1/4 N	653005	3/8 L	654026	1/2 NILN	068034
#6 P	654848	1/4 P	654002	3/8 LN	071703	1/2 P	654009
#10 L	650549	5/16 FLN	070648	3/8 N	653010	5/8 L	654032
#10-24 N	650550	5/16 JN	653034	3/8 NILN	067847	5/8 LN	071709
#10-32 N	650648	5/16 L	654024	3/8 P	654006	5/8 N	653021
#10 P	650584	5/16 LN	071701	3/8 WN	653098	3/4 L	654034
#12 L	650813	5/16 N	653007	1/2 JN	071706	3/4 LN	064331
#12-24 N	650627	5/16 NILN	064260	1/2 L	654030	3/4 N	653026
1/4 L	654022	5/16 P	654004	1/2 LN	071706	3/4 P	654014

GEHL®

Gehl Company 143 Water Street, P.O. Box 179, West Bend, WI 53095-0179