

Form No.
907101
Replaces
904301

7285/7335

Mixer Feeders



PARTS MANUAL

GEHL® AGRICULTURE

Introduction

When ordering service parts, specify the correct part number, full description, quantity required, the unit model number and serial number.

The Mixer Feeder model and serial number is on a plate located on the left side of the Main Frame at the front left corner. “Right” and “Left” are determined from a position standing behind the Mixer Feeder facing the direction of travel. From this position, the Discharge Gate is on the “left” side.

GEHL® Company reserves the right to make changes or improvements in the design or construction of any part of the unit without incurring the obligation to install such changes on any previously delivered units.

NOTE: *On original tire replacement, Company policy prohibits the sale of replacement tires for all GEHL machinery. Replacement Wheel Sets are available and tire size information is called out with the Wheel Sets to facilitate replacement tire selection. ALL REPLACEMENT TIRES MUST BE PURCHASED LOCALLY.*

Refer to the abbreviations table located on this page for the various fastener descriptions. Standard attaching hardware torque values are also provided on the inside back cover.

In the exploded view parts list, Reference Numbers may have additional information following the Reference Number. A Tear Drop symbol will indicate an application of a “wet” product such as oil, and the number inside the Tear Drop will correspond to the description in the Parts List. Also, a number inside of a hexagon will be the torque value required, in foot pounds, on the associated Reference Number. Items shown in the parts list that do not have Reference Numbers are shown for reference purposes only and are NOT available for purchase.

Unless otherwise specified, all Cap Screws or Bolts are Grade 5, cadmium or zinc plated; Hexagon Nuts for Grade 5 Screws or Bolts are Grade B; Hexagon Nuts for other Screws or Bolts are Grade A.

NOTE: *The following abbreviations may be used herein:*

ASSD – Assembled
 ASSY – Assembly
 CB – Carriage Bolt

CCW	– Counterclockwise
CP	– Cotter Pin
CS	– Cap Screw (Hexagon Head)
CTR	– Center
CW	– Clockwise
DEG	– Degree
DIA	– Diameter
FCS	– Flanged Cap Screw
FHMS	– Flat Head Machine Screw
FL	– Flanged
FLN	– Flanged Lock Nut (Hexagon)
FLS	– Flanged Lock Screw (Hexagon)
FW	– Flat Washer
GA	– Gauge
GR	– Grade
HD	– Hard or Head
HN	– Hex Nut
INCL	– Includes
JT	– Joint
LG	– Large
LH	– Left Hand
LN	– Lock Nut
LW	– Lock Washer
M	– Metric
MM/mm	– Millimeter
NF	– National Fine
PB	– Plow Bolt
PTO	– Power Take Off
RH	– Right Hand
RHMS	– Round Head Machine Screw
RPM	– Revolutions Per Minute
RT	– Right
SERR	– Serrated
SHCS	– Socket Head Cap Screw
SHSS	– Socket Head Set Screw
SN	– Serial Number or Slotted Nut
SQ	– Square
T	– Tooth or Teeth
TFS	– Thread Forming Screw
THMS	– Truss Head Machine Screw
THRD	– Thread
WLDMT	– Weldment
#	– Number
()	– (Quantity Used Here)
	– Torque Required in foot pounds
	– Indicates a Fluid Application

TABLE OF CONTENTS

Introduction	Inside Front Cover
Table of Contents	1
Decal Locations	2-5
PTO, Hitchjack, Guards, Discharge Gate & Hydraulics	6-7
Rear Drive & Guard	8-9
Chaincase	10-11
Axles, Wheels, Scale & Weighbars	12-13
One-Piece Discharge Conveyor	14-15
Two-Piece Discharge Conveyor	16-17
Augers & Front Bearings	18
Transport Lights	19
Component Breakdowns	20-26
Hydraulic Motor & Cylinders	20
Hitchjack	21
Augers	22-23
Universal Drives	24-25
Gearbox (Powerhead No. 8)	26
Accessories	27-
Single Valve Conversion Kit	27
Battery Box	28
Magnet Assembly	28
3-Point Scale Stand	28
Safety Tow Chain	29
Remote Scale Indicator (Requires Model 3200 Scale)	29
Audible & Visual Scale Alarms (Models 2100 & 3200 Only)	29
1000 RPM Conversion Kit	30
Alphabetical Index	31
Numerical Index	32-34
Standard Hardware Torque specifications	Inside Back Cover

DECAL LOCATIONS

GENERAL INFORMATION

Decal Locations information is provided to assist in the proper selection and application of new decals, in the event the original decal(s) become(s) damaged or the machine is repainted. Refer to the listing for the illustration reference number, part number, description and quantity of each decal provided in the Kit. Refer to the appropriate illustration(s) for replacement location(s).

NOTE: Refer to the SAFETY Chapter of the Operator's Manual for the specific information provided on all of the various Safety Decals furnished in the Decal Kit(s).

To insure proper selection for correct replacement decal(s), compare all of the various close-up location photographs to your machine BEFORE starting to refinish the unit. Then, circle each pictured decal (applicable to your machine) while checking off its part number in the listing. After you have verified all the decals needed for replacement, set aside unneeded decals for disposal.

NEW DECAL APPLICATION

Surfaces MUST be free from dirt, dust, grease and other foreign material before applying the new decal. To apply a solid-formed decal, remove the smaller portion of the decal backing paper and apply this part of the exposed adhesive backing to the clean surface while maintaining proper position and alignment. Slowly peel off the other portion of the backing paper while applying hand pressure to smooth out the decal surface.

PAINT NOTICE	
Use this list to order paint for refinishing machines with agricultural red and grey color scheme:	
906315	One Gal. AG Red
902872	One Qt. Light Grey
906316	6 (12 oz. Spray Cans) AG Red
902874	6 (12 oz. Spray Cans) Light Grey
Use this list to order paint for refinishing machines with blaze red and maize (yellow) color scheme:	
901225	One Gal. Blaze Paint
901226	One Gal. Maize Paint
610239	6 (12 oz. Spray Cans) Blaze Paint
610240	6 (12 oz. Spray Cans) Maize Paint



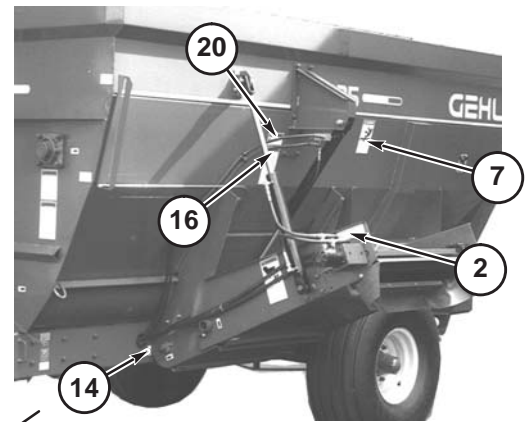
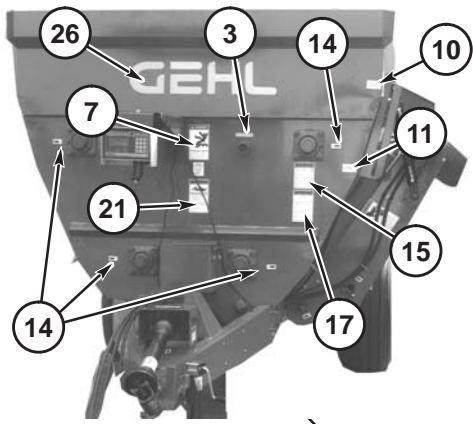
CAUTION

ALWAYS observe safety rules shown on decals. If decals become damaged, or if the unit is repainted, replace the decals. If repainting, BE SURE that ALL decals from the kit(s) which apply to your machine are affixed to your unit.

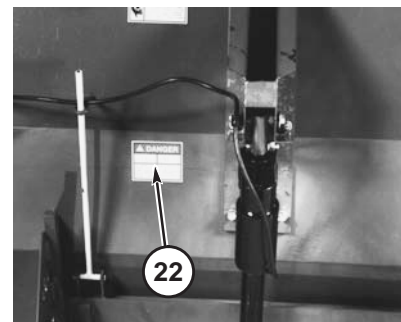
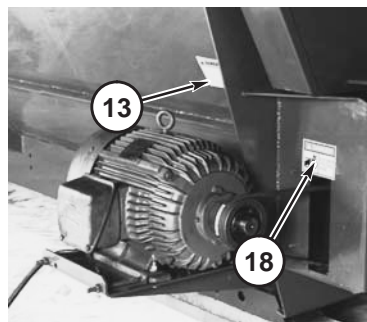
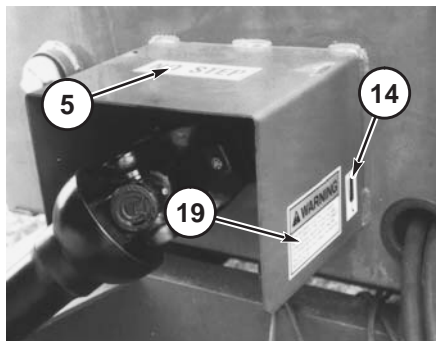
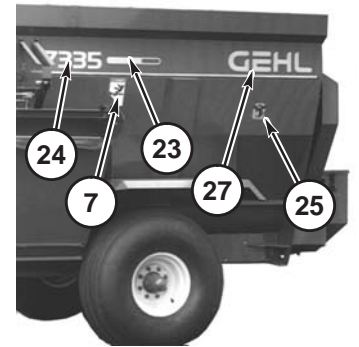
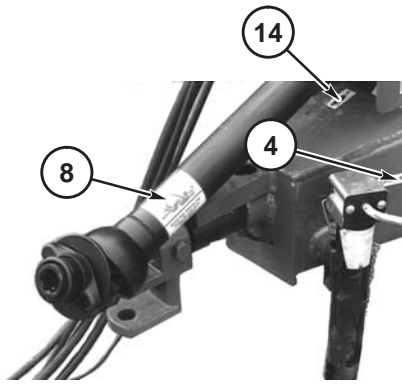
The Decal Set Number for the MF7285 is 113350 and the MF7335 is 113351. The Sets include the following:

Ref. No.	Part No.	Description & Quantity
1.	067493	Red Reflector (3 Places)
2.	067926	Amber Reflector
3.	060510	Jack Storage Position
4.	060511	Jack Lifting Position
5.	080247	NO STEP
6.	091438	WARNING - Chain Drive (2 Places)
7.	091442	DANGER - Rotating Auger (4 Places)
8.	091444	DANGER - Rotating Component
9.	091446	ATTENTION - Add Lubrication
10.	091447	Open
11.	091448	Closed
12.	091727	WARNING - Automatic Conveyor <u>Two-Piece Conveyor Only</u> (2 Places)
13.	092282	WARNING - Electrical Component <u>Compliance Stationary-mounted ONLY</u>
14.	093020	Lubrication Symbol (19 Places)
15.	093367	WARNING - Owner's Responsibility & Read Manual
16.	093369	WARNING - Hydraulic Oil & Unplugging
17.	093373	WARNING - General Safety
18.	093457	DANGER - Do NOT Operate With Shield Missing (3 Places)
19.	093466	WARNING - 540 RPM Operation ONLY
	093465	WARNING - 1000 RPM Operation ONLY <u>1000 RPM Converted Units ONLY</u>
20.	093489	WARNING - Pinch Point
21.	093653	WARNING - Rotating Drive Line
22.	093967	DANGER - Rotating Component <u>Stationary-mounted ONLY</u>
23.	094963	Colorbar (2 Places)
24.	095041	7285 (2 Places)
	091396	7285 (2 Places) <u>Early Style Models</u>
	095042	7335 (2 Places)
	091397	7335 (2 Places) <u>Early Style Models</u>
25.	112710	TMR COW (2 Places)
26.	122617	GEHL
	080124	GEHL (2 Places) <u>Early Style Models</u>
27.	122736	GEHL (2 Places)
28.	145234	SMV (Slow Moving Vehicle)

NOTE: Order Part No. 126757 for 10 ft. roll of Stripe replacement. Part No. 090909 for Early Style models.



Front Master



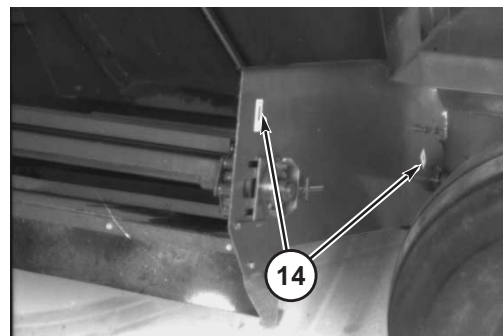
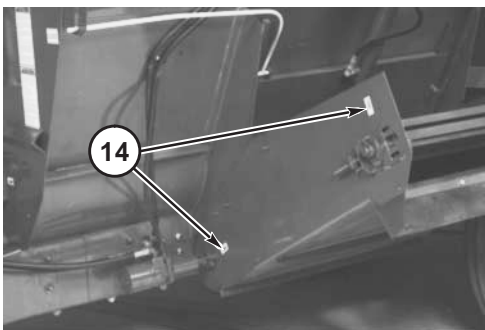
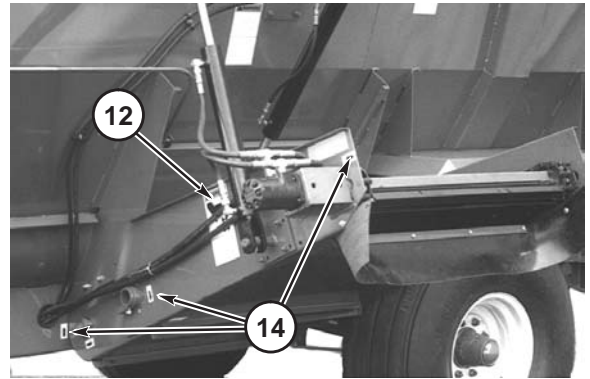
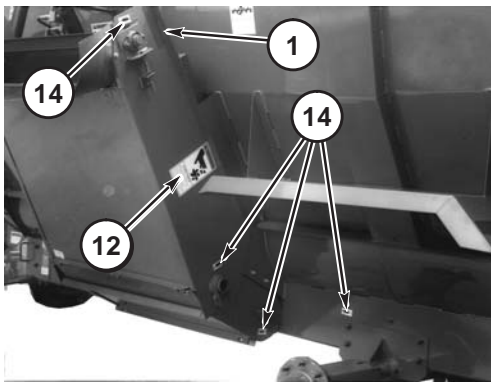
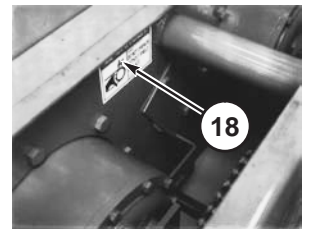
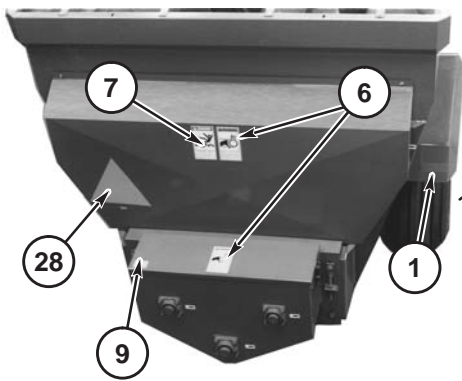
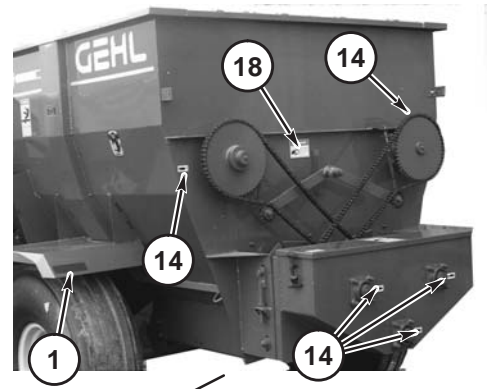
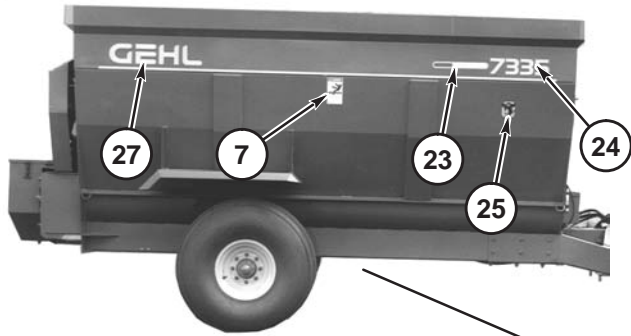
Stationary-mounted Mixer Feeder Units Only

NOTE: This list is a repeat of the Decal List on a previous page and is provided for your convenience when selecting Decals from the second page of photographs.

Ref. Part

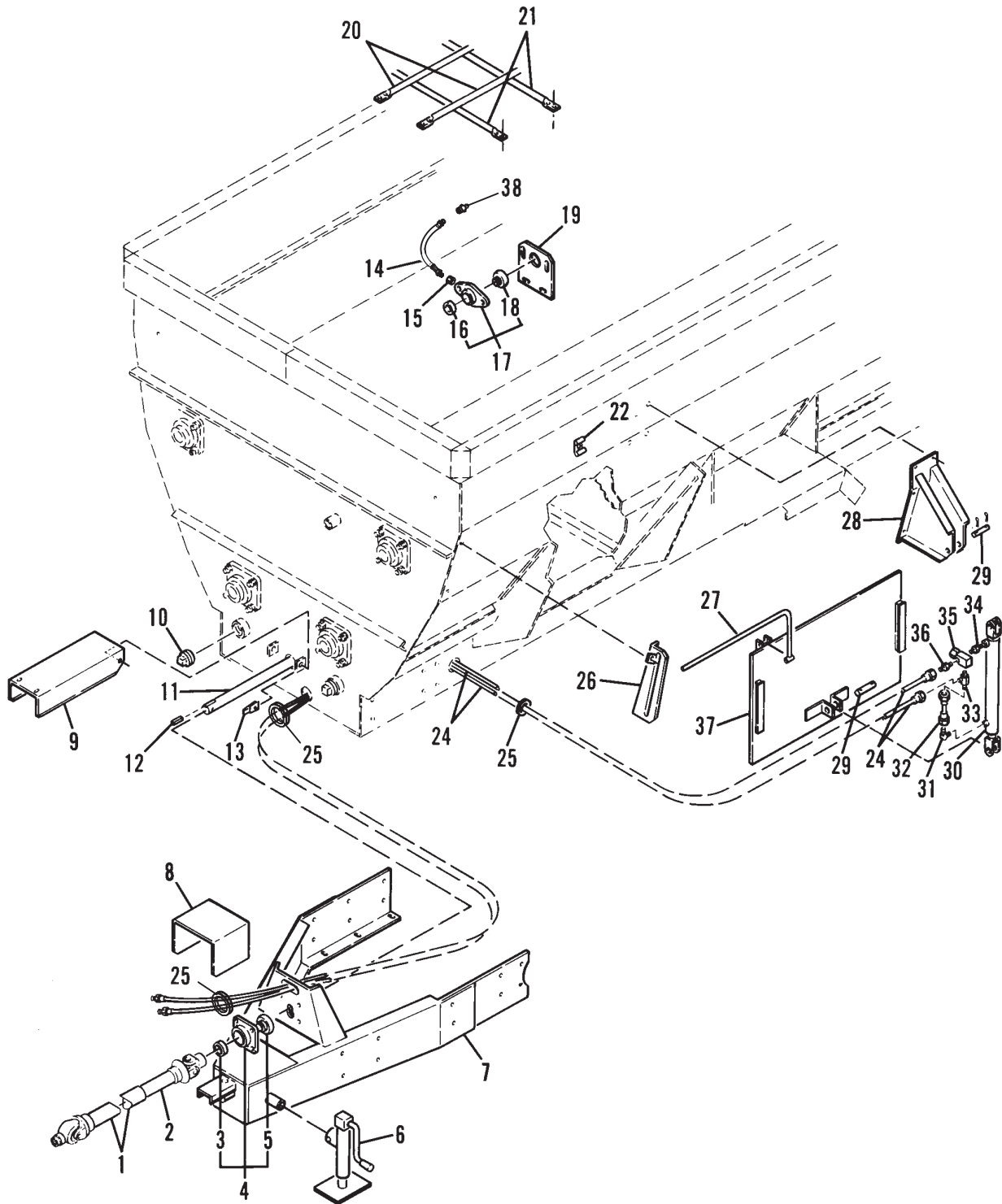
No. No. Description & Quantity

1.	067493	Red Reflector (3 Places)	15.	093367	WARNING - Owner's Responsibility & Read Manual
2.	067926	Amber Reflector	16.	093369	WARNING - Hydraulic Oil & Unplugging
3.	060510	Jack Storage Position	17.	093373	WARNING - General Safety
4.	060511	Jack Lifting Position	18.	093457	DANGER - Do NOT Operate With Shield Missing (3 Places)
5.	080247	NO STEP	19.	093466	WARNING - 540 RPM Operation ONLY
6.	091438	WARNING - Chain Drive (2 Places)		093465	WARNING - 1000 RPM Operation ONLY <u>1000 RPM Converted Units ONLY</u>
7.	091442	DANGER - Rotating Auger (4 Places)	20.	093489	WARNING - Pinch Point
8.	091444	DANGER - Rotating Component	21.	093653	WARNING - Rotating Drive Line
9.	091446	ATTENTION - Add Lubrication	22.	093967	DANGER - Rotating Component <u>Stationary-mounted ONLY</u>
10.	091447	Open	23.	094963	Colorbar (2 Places)
11.	091448	Closed	24.	095041	7285 (2 Places)
12.	091727	WARNING - Automatic Conveyor <u>Two-Piece Conveyor Only</u> (2 Places)		091396	7285 (2 Places) <u>Early Style Models</u>
13.	092282	WARNING - Electrical Component Compliance <u>Stationary-mounted ONLY</u>		095042	7335 (2 Places)
14.	093020	Lubrication Symbol (19 Places)		091397	7335 (2 Places) <u>Early Style Models</u>
			25.	112710	TMR COW (2 Places)
			26.	122617	GEHL
				080124	GEHL (2 Places) <u>Early Style Models</u>
			27.	122736	GEHL (2 Places)
			28.	145234	SMV (Slow Moving Vehicle)



One-piece Discharge Conveyor

MF7285/7335 - PTO, HITCHJACK, GUARDS, DISCHARGE GATE & HYDRAULICS_

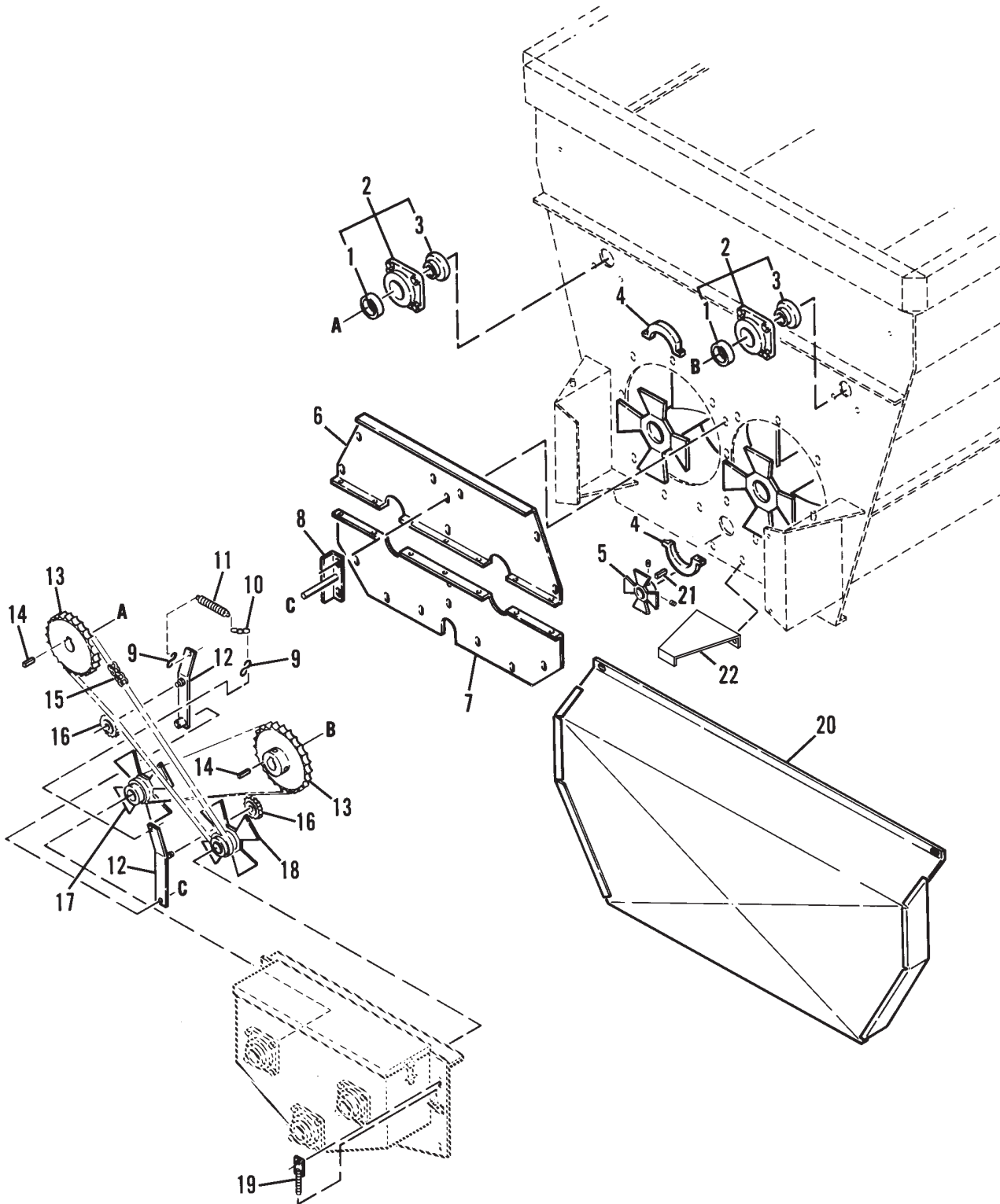


MF7285/7335 - PTO, HITCHJACK, GUARDS, DISCHARGE GATE & HYDRAULICS

Ref. No.	Part No.	Description	Qty. Req.	Ref. No.	Part No.	Description	Qty. Req.
01	092716 _a	PTO SHAFT/FRONT HALF	1	20	092635	PIPE/GRID - LONG (7285)	4
02	092719 _a	PTO SHAFT/REAR HALF	1		092767	PIPE/GRID - LONG (7335)	4
	650833	CS 5/16X3 (LN)	1		650487	CS 5/16X1 (FLN)	8
03	076082	COLLAR/BEARING	1	21	092750	PIPE/GRID - SHORT	6
04	091912	FLANGE/BEARING ASSY	1		650487	CS 5/16X1 (FLN)	12
	570014	FITTING/GREASE	1	22	092673	CLIP/WIRE AND TUBE	4
	650453	CS 1/2X1-1/2 (HN, LW)	4		061708	CS 1/4X1 (HN, LW, FW)	4
05	083666	BEARING/BALL	1	24	091895	HOSE/ASSY	2
06	081464 _b	JACK/ASSY	1	25	092666	TRIM/INSIDE	3
07	092749	HITCH	1	26	092728	BRACKET/INDICATOR ROD	1
	650495	CS 1/2X1-1/4 (HN, LW)	8		650448	CS 1/4X3/4 (HN, LW)	2
	650453	CS 1/2X1-1/2 (HN, LW)	4	27	092670	ROD/INDICATOR (7285)	1
	650844	CS 5/8X1-3/4 (HN, LW, FW)	6		092772	ROD/INDICATOR (7335)	1
08	091947	SHIELD/PTO	1		650833	CS 5/16X3 (LN)	1
	650488	CS 3/8X3/4 (LW)	4	28	094261	BRACKET/DOOR CYL - LARGE (USED WITH 20" CYLINDER)	1
09	092651	SHAFT SHIELD/PTO	1		092729	BRACKET/DOOR CYL - LARGE (USED WITH 16" CYLINDER)	1
	650448	CS 1/4X3/4 (FW)	4		650495	CS 1/2X1-1/4 (LN)	4
10	660007	PLUG/PIPE - 2" NPT	2		092642	HINGE PIN/DOOR	2
11	110777	LINE/SHAFT W/SLEEVES (7285) (AFTER SN5560)	1	29	655020	CP 3/16X1-1/2	4
	092745	LINE/SHAFT W/SLEEVE (7285) (BEFORE SN5561)	1	30	093759 _c	CYLINDER/HYDRAULIC 2X20 (LATER STYLE)	1
	110776	LINE/SHAFT W/SLEEVES (7335) (AFTER SN9730)	1		091882 _c	CYLINDER/HYDRAULIC 2X16 (EARLY STYLE)	1
	092765	LINE/SHAFT W/SLEEVE (7335) (BEFORE SN9731)	1	31	057650	FITTING/HYDRAULIC	1
12	H6098A	KEY 3/8SQX1-1/2	1	32	094472	HOSE/ASSY 19-1/2" (LATER STYLE)	1
13	092683	CLIP/TINNERMAN 1/4	4		091894	HOSE 14-1/2" (EARLY STYLE)	1
14	091907	HOSE/ASSY	2	33	113109	FITTING/TEE	1
15	091896	REDUCER/HYD FITTING	2	34	057653	FITTING/HYDRAULIC	1
16	520195	COLLAR/BEARING	2	35	091889	VALVE/RELIEF	1
17	091891	FLANGE/BEARING 1-3/4 BORE	2	36	062889	FITTING/STRAIGHT	1
	650453	CS 1/2X1-1/2 (HN, LW, FW)	4	37	092730	DOOR	1
18	520194	BEARING/BALL 1-3/4	2	38	570006	FITTING/GREASE	2
19	119738	PLATE/MOUNT	2				
	650495	CS 1/2X1-1/4 (HN, LW, FW)	4				

a) For components, see pages titled 'Universal Drives'.
b) For breakdown, see page titled 'Hitchjack Components'.
c) For components, see pages titled 'Hydraulic Cylinders'.

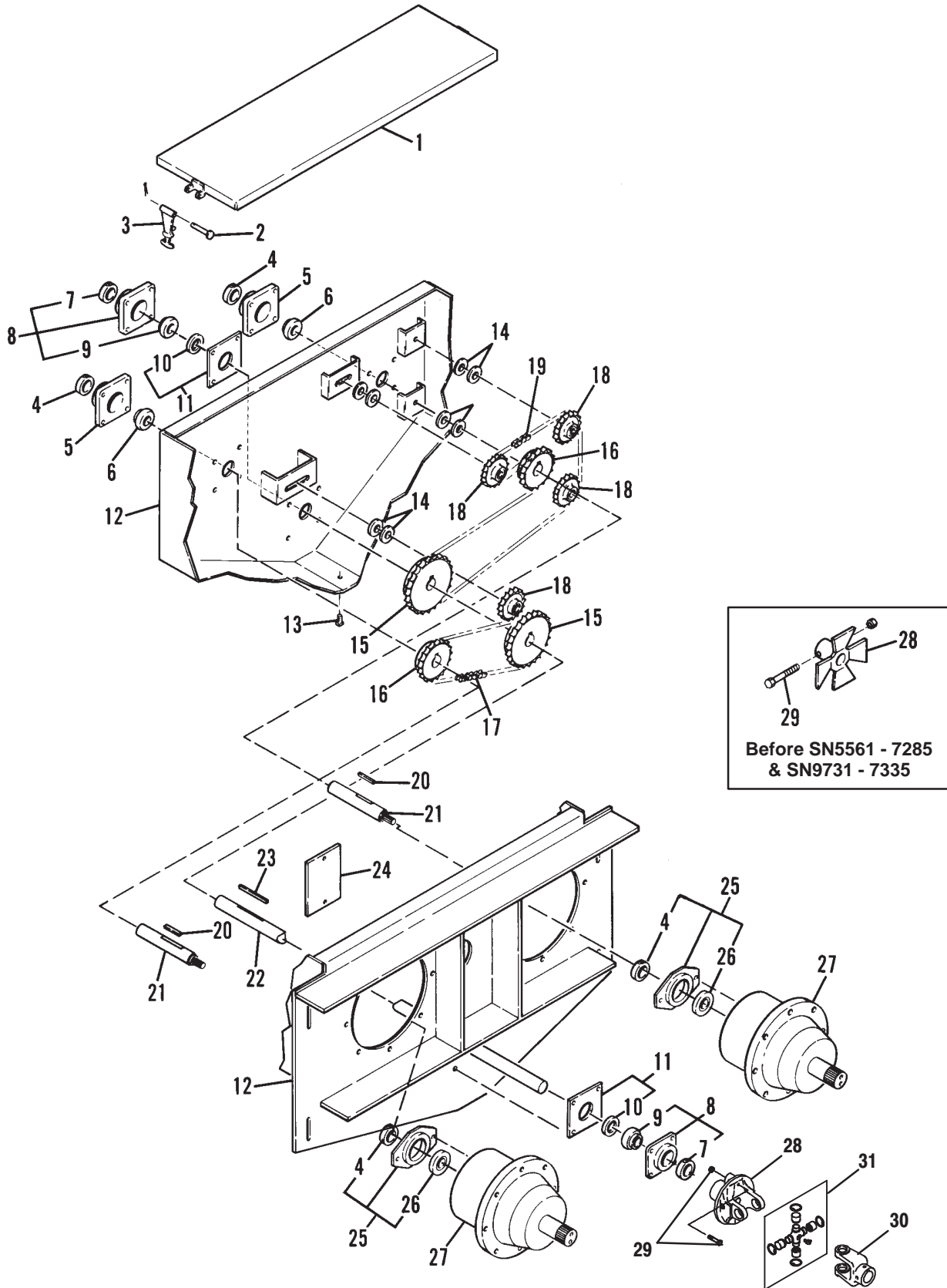
MF7285/7335 - REAR DRIVE & GUARD



MF7285/7335 - REAR DRIVE & GUARD

Ref. No.	Part No.	Description	Qty. Req.	Ref. No.	Part No.	Description	Qty. Req.
01	092724	COLLAR/BEARING LOCK	2	11	092681	SPRING/EXTENSION	1
02	091915	FLANGE/BEARING ASSY	2	12	092744	ARM/IDLER	2
	570014	FITTING/GREASE	2	13	092763	SPROCKET/52T	2
	650647	CS 5/8X2 (HN, LW)	8	14	092726	KEY 5/8SQX2	2
03	092723	BEARING/BALL	2	15	091905	CHAIN/ROLLER #80X126 LINKS	2
04	124975	WASHER/SEALER	4			(INCLUDES (1) 500195 PLAIN CONNECTOR)	
	650280	SHCS 5/16X2 (HN, LW)	4	16	091918	SPROCKET/IDLER 12T	2
05	092727	DRIVE SHAFT/STAR	1			(2) 3/4 LN	
		(BEFORE SN5561 - 7285 & 9731 - 7335)	1	17	092731	HUB/DRIVE - LH	1
	650201	SHSS 5/16X5/16	2	18	092732	HUB/DRIVE - RH	1
06	092755	PANEL/UPPER FILLER	1	19	092667	BRACKET/ADJUSTMENT	2
	650786	CB 3/8X1-1/4 (HN, LW, FW)	7			(4) 3/4 HN	
07	092754	PANEL/LOWER FILLER	1		650163	CS 3/4X1-3/4 (HN, LW)	2
	650573	CB 5/16X1 (HN, LW, FW)	7	20	092743	SHIELD/REAR	1
	650786	CB 3/8X1-1/4 (HN, LW, FW)	7		650835	CS 1/4X1 (HN, LW, FW, WN)	2
08	092752	BRACKET/IDLER	1	21	092725	KEY 3/8SQX1-1/2	1
	650773	CB 3/8X1-1/2 (HN, LW, FW)	2			(BEFORE SN5561 - 7285 & 9731 - 7335)	1
09	B11433A	S-HOOK	2	22	110201	STAND-OFF/ASSY	1
10	092643	CHAIN	1		650495	CS 1/2X1-1/4 (HN, LW)	2

MF7285/7335 - CHAINCASE

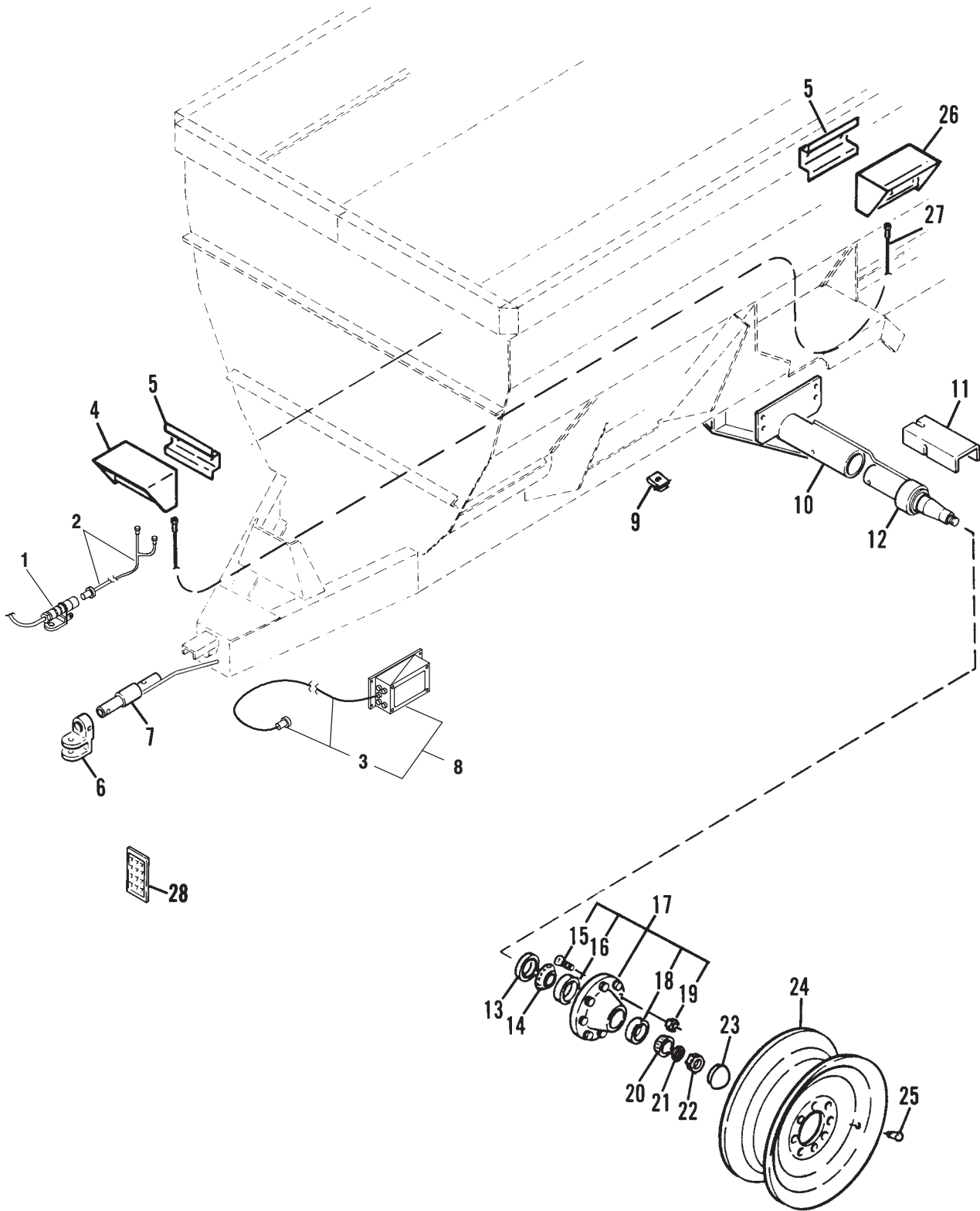


MF7285/7335 - CHAINCASE

Ref. No.	Part No.	Description	Qty. Req.	Ref. No.	Part No.	Description	Qty. Req.
01	092740	COVER/CHAINCASE	1	21	094926	DRIVE SHAFT/PLANETARY	2
02	092665	PIN/CLEVIS3/16X1-5/8	2	22	097636	INPUT SHAFT/CHAINCASE (AFTER SN5560 - 7285 & 9730 - 7335)	1
	650590	CP 1/16X1/2	2		092739	INPUT SHAFT/CHAINCASE (BEFORE SN5561 - 7285 & 9731 - 7335)	1
03	091899	HOOK/RUBBER	2	23	092734	KEY 3/8SQX3	1
04	520153	COLLAR/BEARING	4	24	092733	COVER PLATE/GEAR PUMP	1
05	R13062 _a	HOUSING/BEARING	2		650494	CS 1/2X1 (HN, LW)	2
	570014	FITTING/GREASE	2	25	092658	BEARING PLATE ASSY	2
	650569	CS 1/2X1-3/4 (HN, LW)	8		650494	CS 1/2X1 (LW)	4
06	069387	BEARING/BALL	2	26	520208	BEARING/BALL	2
07	076082	COLLAR/BEARING	2	27	092742 _b	POWERHEAD NO. 8	2
08	091912	FLANGED BEARING/ASSY	2		651232	CS 9/16X1-3/4 (HN, LW)	16
	570014	FITTING/GREASE	2	28	110484	YOKE/BALL SHEAR (AFTER SN5560 - 7285 & 9730 - 7335)	1
	650569	CS 1/2X1-3/4 (HN, LW)	8		092738	STAR/ASSY (BEFORE SN5561 - 7285 & 9731 - 7335)	1
09	083666	BEARING/BALL	2	29	904413 _c	KIT/SHEAR BOLT (540 RPM)	1
10	091884	SEAL/OIL	2		080453 _c	KIT/SHEAR BOLT (1000 RPM) (AFTER SN5560 - 7285 & 9730 - 7335)	1
11	092735	PLATE/SEAL	2		903457 _c	KIT/SHEAR BOLT (BEFORE SN5561 - 7285 & 9731 - 7335)	1
12	092741	CHAINCASE	1	30	081507	YOKE (AFTER SN5560 - 7285 & 9730 - 7335)	1
	650163	CS 3/4x1-3/4 (HN, LW, FW)	4	31	045327	KIT/CROSS (AFTER SN5560 - 7285 & 9730 - 7335)	1
13	660004	PLUG/PIPE 1/2	1		570014	FITTING/GREASE	1
14	654012	FW 5/8	AR				
15	091881	SPROCKET/27T	2				
16	091880	SPROCKET/21T	2				
17	058212	CHAIN/ROLLER #60X66 LINKS INCLUDES (1) 500160 PLAIN CONNECTOR	1				
18	056845	SPROCKET/IDLER 15T	4				
	650710	CS 5/8X2-1/4 (HN, LW, 8FW)	4				
19	091890	CHAIN #60X110 LINKS INCLUDES (1) 500160 PLAIN CONNECTOR	1				
20	009476	KEY 5/16 SQ X 1-1/4	2				

- a) For replacement, order also Grease Fitting 570002.**
b) For breakdown, see 'Powerhead No. 8 Gearbox' page.
c) Contains 8 Shear Bolts & 8 Locknuts.

MF7285/7335 - AXLES, WHEELS, SCALE & WEIGHBARS



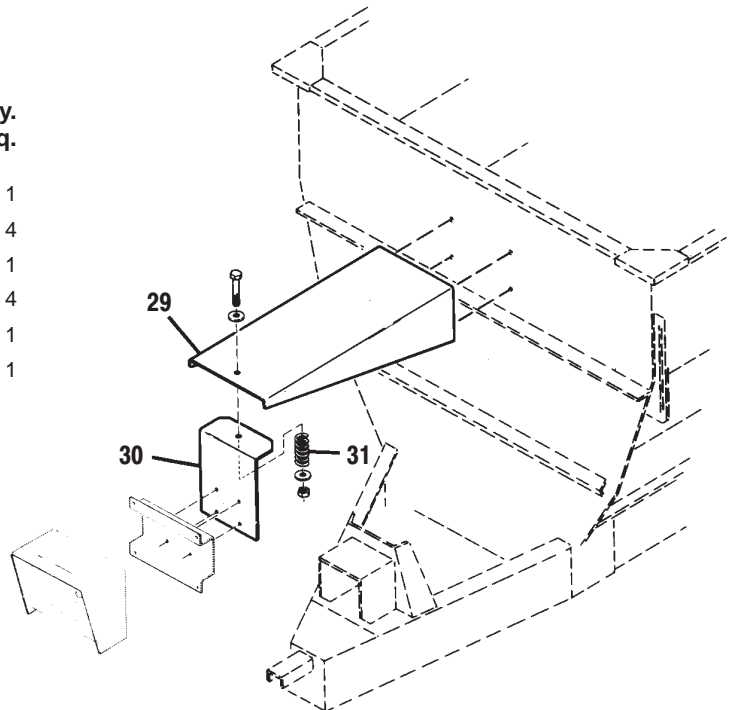
MF7285/7335 - AXLES, WHEELS, SCALE & WEIGHBARS

Ref. No.	Part No.	Description	Qty. Req.	Ref. No.	Part No.	Description	Qty. Req.
01	600798	SOCKET - TRACTOR ASSY	1	15	078657	BOLT/WHEEL 5/8X2-1/4 (LATER)	16
02	093030	CORD/POWER	1		041879	BOLT/WHEEL 9/16X2-1/4 (EARLY)	16
03	120814	CABLE/JUNCTION BOX 15 FT.	1	16	043836	CUP/BEARING INNER	2
04	112518	INDICATOR/MODEL 1500	1	17	091898	HUB	2
	112519	INDICATOR/MODEL 2100	1	18	048638	CUP/BEARING OUTER	2
	112520	INDICATOR/MODEL 3200	1	19	079152	NUT/WHEEL 5/8 (LATER STYLE)	16
	094406	INDICATOR/MODEL 5	1		047542	NUT/WHEEL 9/16 (EARLY STYLE)	16
	092764	INDICATOR/MODEL 10	1	20	048637	CONE/BEARING	2
	092794 _a	INDICATOR/MODEL 20	1	21	066717	WASHER 7/8	2
	650815	RHMS #10-24X3/4 (HN)	2	22	653102	HN SLOTTED 7/8	2
05	092684	BRACKET/INDICATOR MTG	AR		655046	CP 5/32X1-3/4	2
06	092762	CLEVIS 2-1/8	1	23	092759	HUB CAP/SPINDLE	2
	650709	CS 3/4X4 (HN, LW)	1	24	112443	WHEEL 11CX16.1	2
07	092761	WEIGHBEAM 2-1/8 DB-16 FT	1		112444	WHEEL W8B-20	2
	650709	CS 3/4X4 (HN, LW)	1	25	045581	STEM/VALVE	2
08	092679	BOX/JUNCTION BOX 15 FT CORD	1	26	118241	REMOTE/INDICATOR (OPTIONAL) (REQUIRES MODEL 3200 SCALE)	1
	651056	RHMS #8-32X3/4	4		092795 _b	REMOTE/INDICATOR MODEL 20R (OPTIONAL)	1
09	092675	CLIP - CABLE, FRAME	AR	27	092796 _b	CABLE/INDICATOR TO REMOTE (OPTIONAL)	1
10	092758	AXLE	1	28	092988 _{bc}	TRANSMITTER/WIRELESS (OPTIONAL)	1
	650495	CS 1/2X1-1/4 (HN, LW)	8				
11	092646	SHIELD/WEIGHBAR	2				
12	092760	SPINDLE/WEIGHBAR 2-1/2"	2				
	650498	CS 1/2X6 (HN, 4FW)	2				
13	600360	SEAL/OIL (LATER STYLE)	2				
	048634	SEAL/OIL (EARLY STYLE)	2				
14	048635	CONE/BEARING	2				

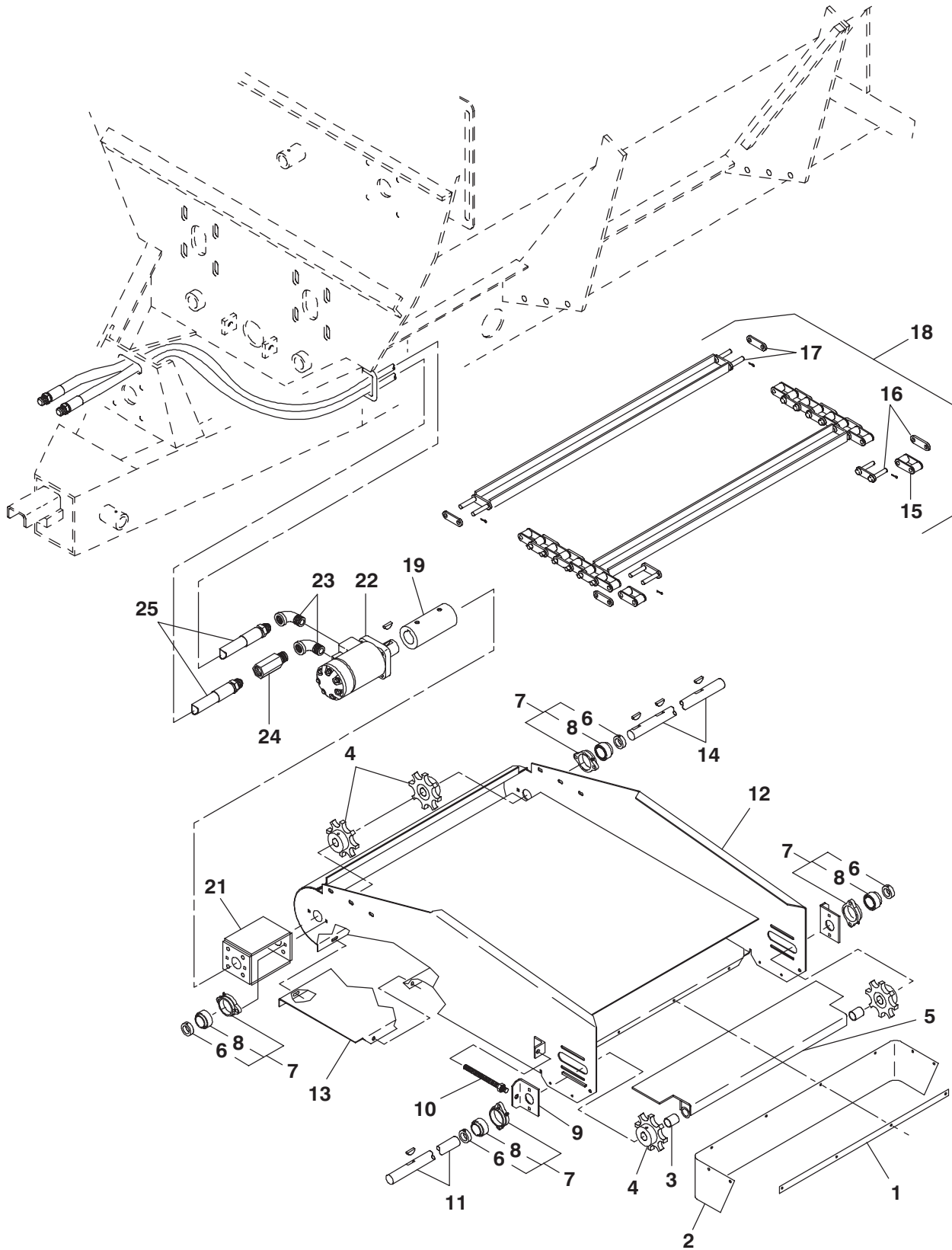
a) Provides additional circuitry to connect a 092795 Remote Model 20R Indicator (item 26) with a 092794 Indicator to Remote Cable (item 27).
b) Used ONLY with 092794 Model 20 Indicator.
c) Included with 092795 Remote Indicator.

Extended-view Indicator Mounting Parts

Ref. No.	Part No.	Description	Qty. Req.
29	092797	SUPPORT/INDICATOR	1
	650488	CS 3/8X3/4 (HN, LW)	4
30	092798	BRACKET/INDICATOR	1
	650542	CS 1/4X1/2 (HN, LW)	4
31	055342	SPRING/COMPRESSION	1
	650644	CS 1/2X3 (NILN, 2FW)	1



MF7285/7335 - ONE-PIECE DISCHARGE CONVEYOR

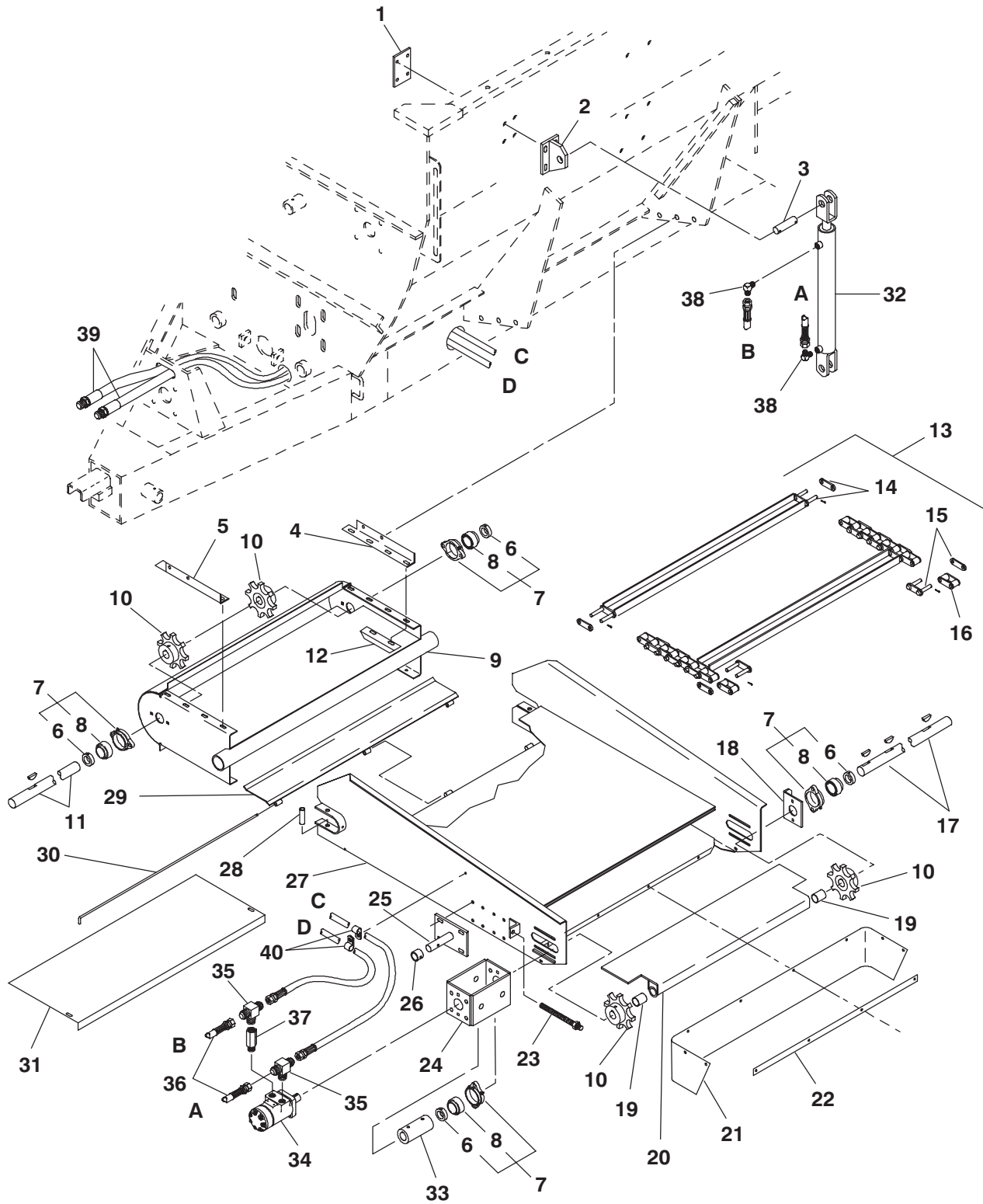


MF7285/7335 - ONE-PIECE DISCHARGE CONVEYOR

Ref. No.	Part No.	Description	Qty. Req.	Ref. No.	Part No.	Description	Qty. Req.
01	092602	STRAP/DEFLECTOR	1	13	092604	DUMP PLATE/CONVEYOR	1
	650448	CS 1/4X3/4 (HN, LW)	4		650487	CS 5/16X1 (HN, LW, FW)	4
02	092603	DEFLECTOR/BELT	1	14	092606	SHAFT/CONVEYOR	1
	650448	CS 1/4X3/4 (HN, LW, FW)	4	15	091886	LINK/HALF	AR
03	091892	BUSHING	2	16	092779	LINK/STEEL W/PINS	AR
04	091893	SPROCKET/8T	4	17	092608	SLAT W/LINK & PINS	6
	650513	KEY/WOODRUFF 1/4X1	3	18	092607	CONVEYOR/CHAIN ASSY	1
05	092610	ADJ. FLOOR PLATE ASSY	1	19	091908	COUPLER/SHAFT	1
	570014	FITTING/GREASE	2		650513	KEY/WOODRUFF 1/4X1	1
06	520084	COLLAR/LOCK	4		650201	SHSS 5/16X5/16	2
07	091923	FLANGE/BEARING (INCL 6 & 8)	4	21	092619	MOUNT/HYDRAULIC MOTOR	1
	570009	FITTING/GREASE	4		650060	CS 3/8X1 (LW)	4
	650533	CS 3/8X1-1/2 (HN, LW, 4FW)	8	22	065500 _a	MOTOR/HYDRAULIC	1
08	042903	BEARING/BALL	4		650513	KEY/WOODRUFF 1/4X1	1
09	092601	BEARING/ADJUSTMENT PLATE	2	23	058654	ELBOW/STREET	2
10	092600	ROD/THREADED (4HN 1/2)	2	24	067457	VALVE/HYDRAULIC CHECK (1/2 DIA) ..	1
11	092611	SHAFT/UPPER CONVEYOR	1	25	091897	HOSE 135" LONG	2
12	092605	CONVEYOR	1				
	650490	CS 3/8X1 (HN, LW, 2FW)	6				

a) For breakdown, see page titled 'Hydraulic Motor'.

MF7285/7335 - TWO-PIECE DISCHARGE CONVEYOR

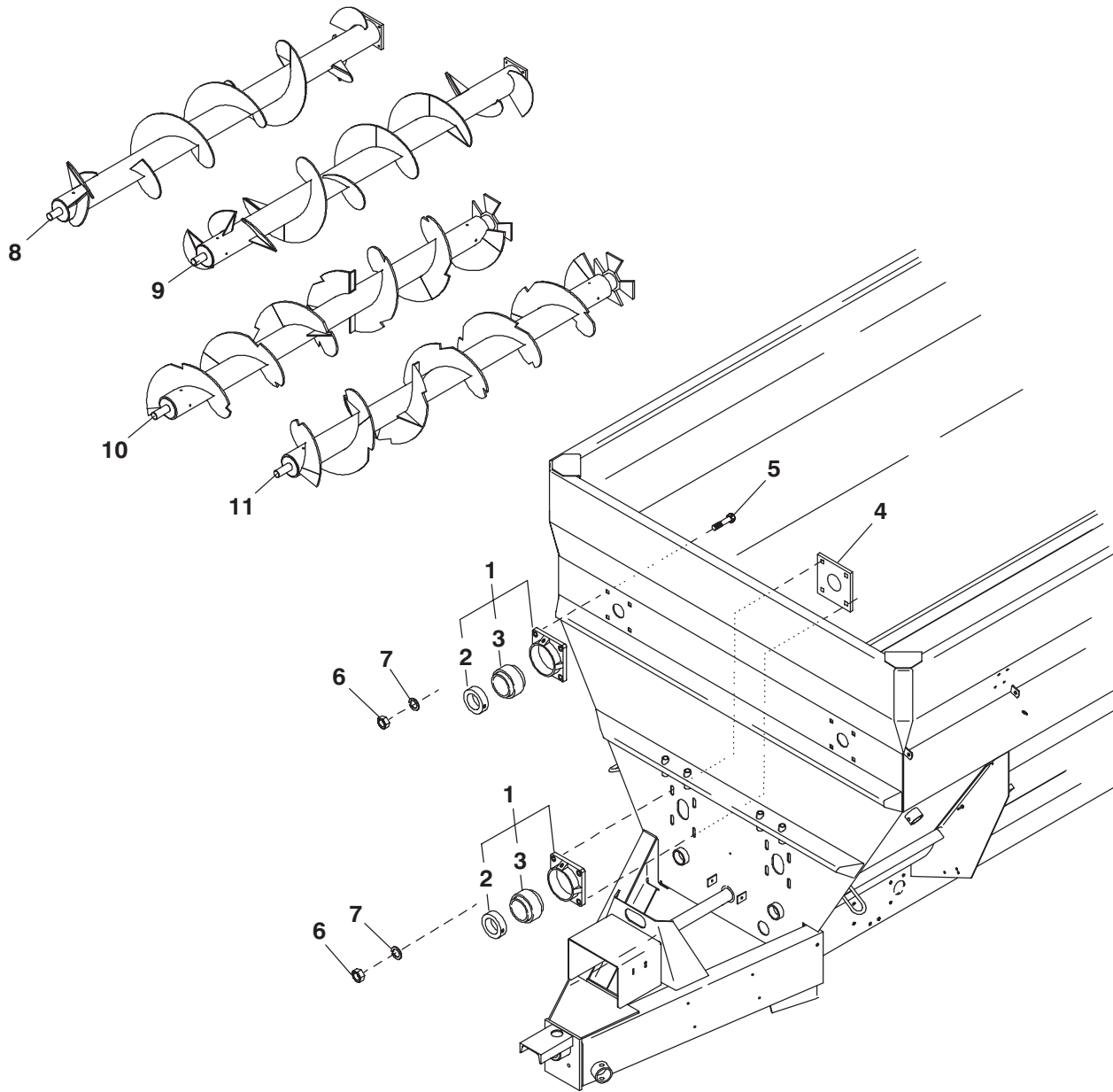


MF7285/7335 - TWO-PIECE DISCHARGE CONVEYOR

Ref. No.	Part No.	Description	Qty. Req.	Ref. No.	Part No.	Description	Qty. Req.
01	092626	BACKING PLATE CONV. CYL.	1	23	092600	ROD/THREADED (4HN 1/2)	2
	071381	CS 3/8X1 FULL THD (HN, LW, FW) ...	4	24	092619	MOUNT/MOTOR	1
02	092621	BRACKET/CYLINDER LIFT	1	25	092618	SUPPORT/CYLINDER	1
03	092622	PIN/CYLINDER HINGE	1		650490	CS 3/8X1 (HN, LW, FW)	4
	655022	CP 3/16X1-3/4	2	26	092627	RETAINER/CYLINDER	1
04	092628	MOUNT/CONVEYOR R.H.	1		650692	CS 5/16X1-3/4 (HN, LW)	1
	650490	CS 3/8X1 (HN, LW)	2	27	092617	CONVEYOR/UPPER	1
05	092629	MOUNT/CONVEYOR L.H.	1		570014	FITTING/GREASE	2
	650490	CS 3/8X1 (HN, LW)	2	28	092625	TUBE/PIVOT RETAINER	2
06	520084	COLLAR/BEARING	4		650594	CS 1/2X3-1/4 (LN)	2
07	091923	FLANGE/BEARING ASSY	4	29	092631	PLATE/PIVOT	1
	570009	FITTING/GREASE	4	30	092630	SHAFT/PIVOT	1
	071381	CS 3/8X1 FULL THD (HN, LW)	4		650551	CP 3/32X3/4	1
	650533	CS 3/8X1-1/2 (HN, LW, FW)	4	31	092624	PLATE/LOWER CONV. BOTTOM	1
08	042903	BEARING	4	32	091882 _a	CYLINDER/HYDRAULIC 2X16	1
09	092615	CONVEYOR/LOWER	1	33	091908	COUPLER/SHAFT	1
	650060	CS 3/8X1 (HN, LW, 8 FW)	4		650513	KEY/WOODRUFF 1/4X1	1
10	091893	SPROCKET/8T	4		650201	SHSS 5/16X5/16	2
	650513	KEY/WOODRUFF 1/4X1	3	34	065500 _b	MOTOR/HYDRAULIC	1
11	092616	DRIVE SHAFT/LOWER CONV.	1		650513	KEY/WOODRUFF 1/4X1	1
12	092623	GUIDE/CHAIN	2		650490	CS 3/8X1 (LW)	4
	650533	CS 3/8X1-1/2 (HN, LW, 8FW)	4	35	067769	FITTING/TEE	2
13	092634	CONVEYOR/CHAIN ASSY	1	36	062404	HOSE/HYDRAULIC	2
14	092608	SLAT W/LINK & PINS	9	37	067457	VALVE/HYDRAULIC CHECK	1
15	092779	LINK/STEEL W/PINS	AR	38	062405	ELBOW/MALE 1/2	2
16	091886	LINK/HALF	AR	39	092632	HOSE/ASSY 195"	2
17	092620	DRIVE SHAFT/UPPER	1	40	048967	CLAMP/INSULATED HOSE	2
18	092601	BEARING/ADJUSTMENT PLATE	1		650426	CS 1/4X1-1/4 (HN, LW, 2FW)	1
19	091892	BUSHING	2				
20	092610	PLATE/ADJ. FLOOR ASSY	1				
21	092603	DEFLECTOR/BELT	1				
	650448	CS 1/4X3/4 (HN, LW, FW)	4				
22	092602	STRAP/DEFLECTOR	1				
	650448	CS 1/4X3/4 (HN, LW)	4				

a) For components, see page titled 'Hydraulic Cylinder'.
b) For components, see page titled 'Hydraulic Motor'.

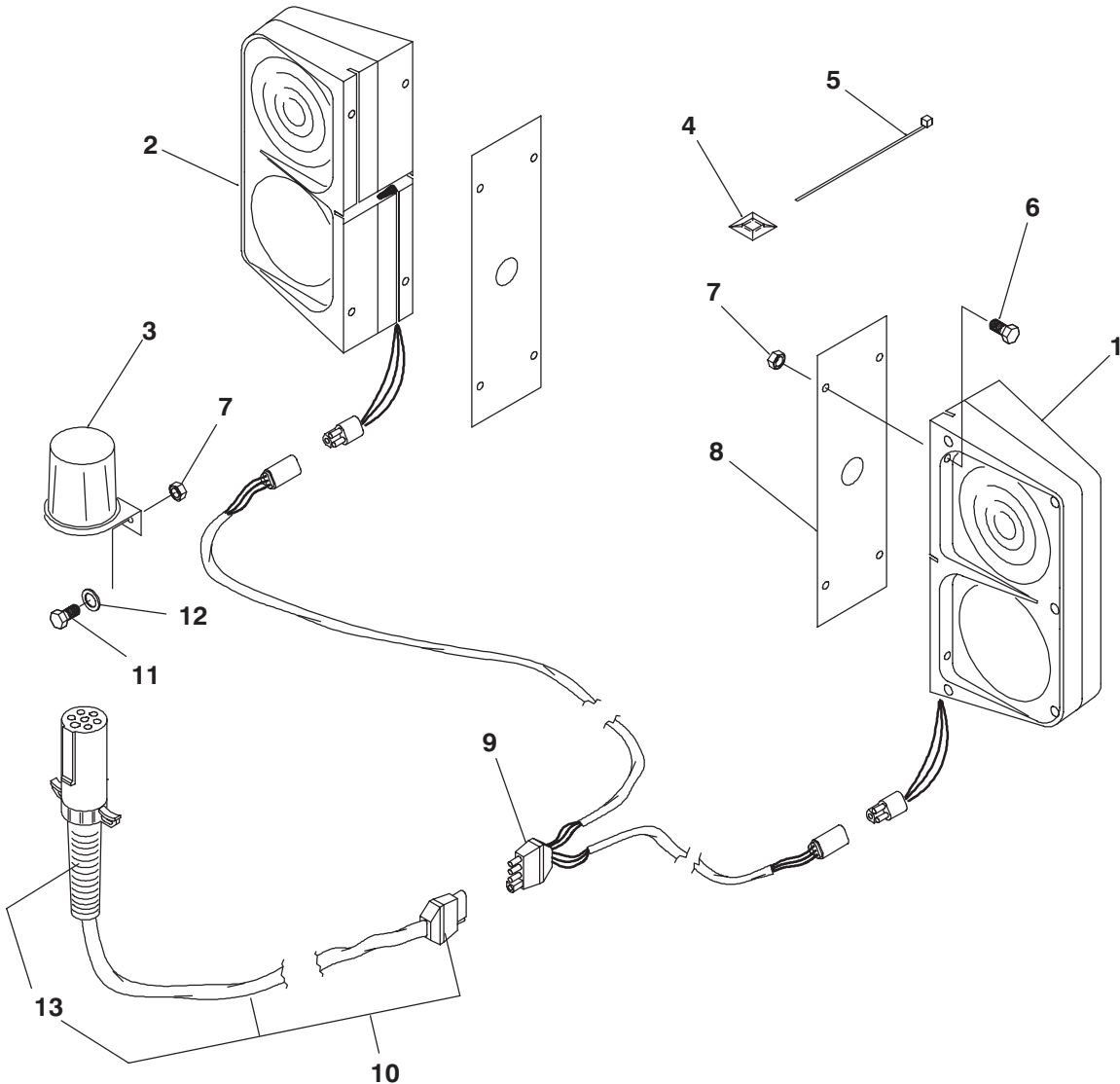
MF7285/7335 - AUGERS & FRONT BEARINGS



Ref. No.	Part No.	Description	Qty. Req.	Ref. No.	Part No.	Description	Qty. Req.
01	091913	FLANGE/BEARING	4	09	094810 _a	AUGER/TOP LT (7285)	1
02	089867	COLLAR/LOCK	4		124781 _a	AUGER/TOP LT (7335)	1
03	091914	BEARING/BALL	4	10	124791 _a	AUGER/BOTTOM RT (7285)	1
04	092640	BACKING PLATE/BEARING	2		124725 _a	AUGER/BOTTOM RT (7335)	1
05	650647	CS 5/8X2	16	11	124792 _a	AUGER/BOTTOM LT (7285)	1
06	653021	HN 5/8	16		124726 _a	AUGER/BOTTOM LT (7335)	1
07	654032	LW 5/8	16				
08	094809 _a	AUGER/TOP RT (7285)	1				
	124780 _a	AUGER/TOP RT (7335)	1				

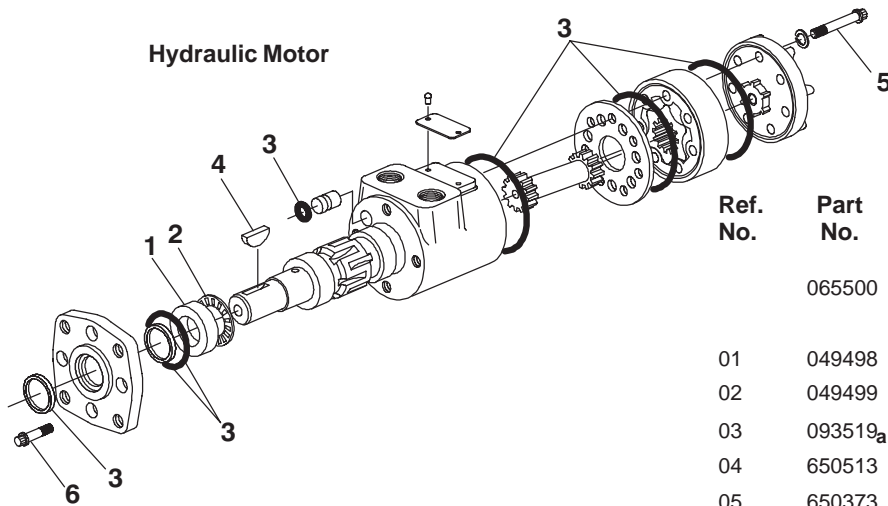
a) For breakdown, see 'Auger Components' pages.

MF7285/7335 - TRANSPORT LIGHTS



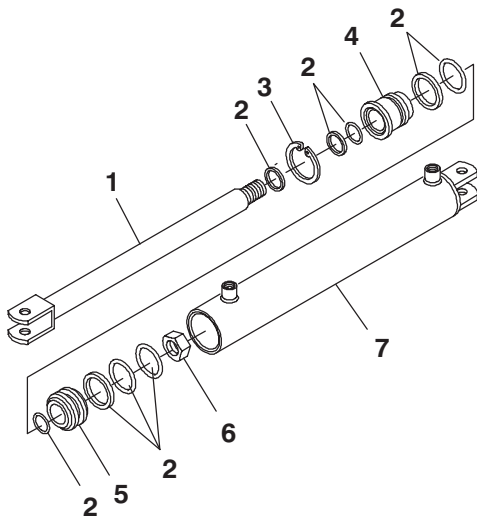
Ref. No.	Part No.	Description	Qty. Req.	Ref. No.	Part No.	Description	Qty. Req.
	142970	LIGHTS/TRANSPORT	1	07	071401	NILN 1/4	10
		CONSISTS OF:		08	112706	SUPPORT/LIGHT	2
01	112884	LIGHT/TRANSPORT LT	1	09	113252	HARNESS/"Y", 17' LT & 17' RT	1
02	112885	LIGHT/TRANSPORT RT	1	10	112888	HARNESS/PRIMARY	1
03	112886	HOLDER	1	11	650663	CS 1/4X5/8	2
04	125946	BASE/MOUNTING	8	12	650863	FW 1/4	2
05	055648	TIE/WIRE	8	13	650863	PLUG/7-PIN/W/CABLE PROTECTOR	1
06	650426	CS 1/4X1-1/4 (NILN)	8				

MF7285/7335 - HYDRAULIC MOTOR & CYLINDERS



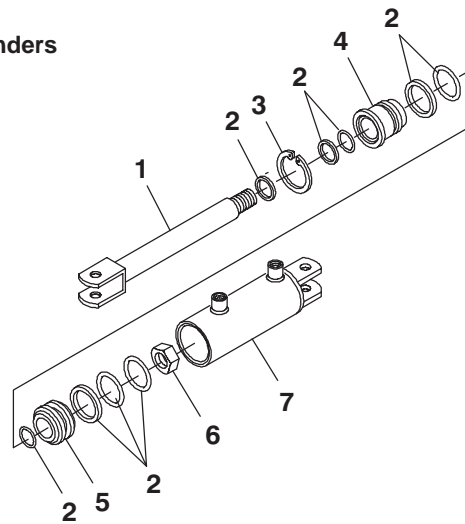
Ref. No.	Part No.	Description	Qty. Req.
	065500	MOTOR/HYDRAULIC	1
		CONSISTS OF:	
01	049498	RACE/BEARING	1
02	049499	WASHER/THRUST	1
03	093519 _a	KIT/SEAL	1
04	650513	KEY/WOODRUFF 1/4X1	1
05	650373	12-PT CS 5/16X1-3/4 NF	7
06	650927	12-PT CS 5/16X7/8 NF	4

a) The Seal Kit includes all required Seals, O-Rings, sealant and an instruction sheet.



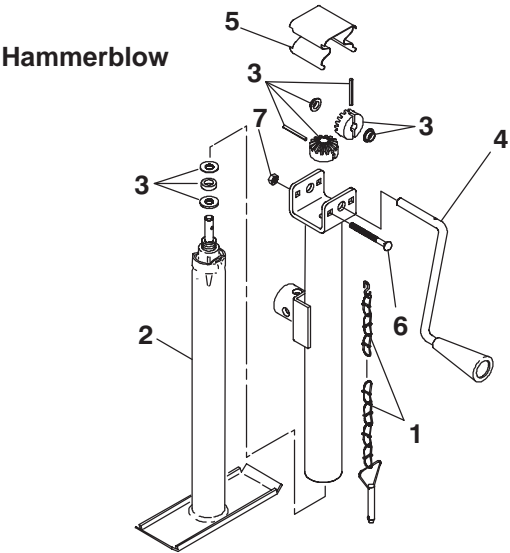
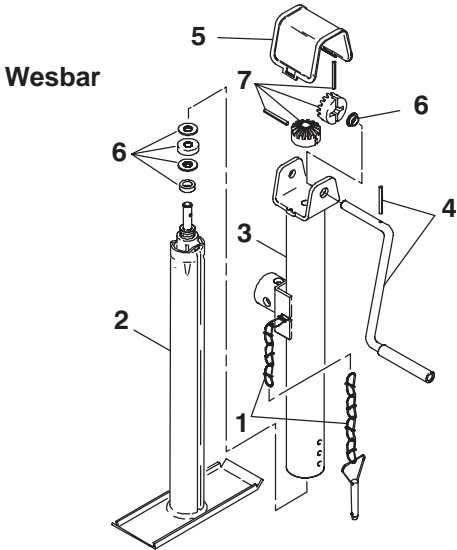
Ref. No.	Part No.	Description	Qty. Req.
	093759	CYLINDER/HYDRAULIC 2X20	1
		CONSISTS OF:	
01	094387	SHAFT WITH CLEVIS	1
02	094554	KIT/SEAL	1
03	089689	RING/SNAP	1
04	094553	HEAD/HYD CYL	1
05	094552	PISTON/HYD CYL	1
06	073788	NUT/LOCK	1
07	094386	BARREL W/PORTS	1

Hydraulic Cylinders



Ref. No.	Part No.	Description	Qty. Req.
	091882	CYLINDER/HYDRAULIC 2X16	1
		CONSISTS OF:	
01	094291	SHAFT & CLEVIS	1
02	089693	KIT/SEAL	1
03	089689	RING/SNAP	1
04	128372	HEAD/HYD CYL	1
05	089690	PISTON/HYD CYL	1
06	073788	NUT/LOCK	1
07	094290	BARREL/HYD CYLINDER	1

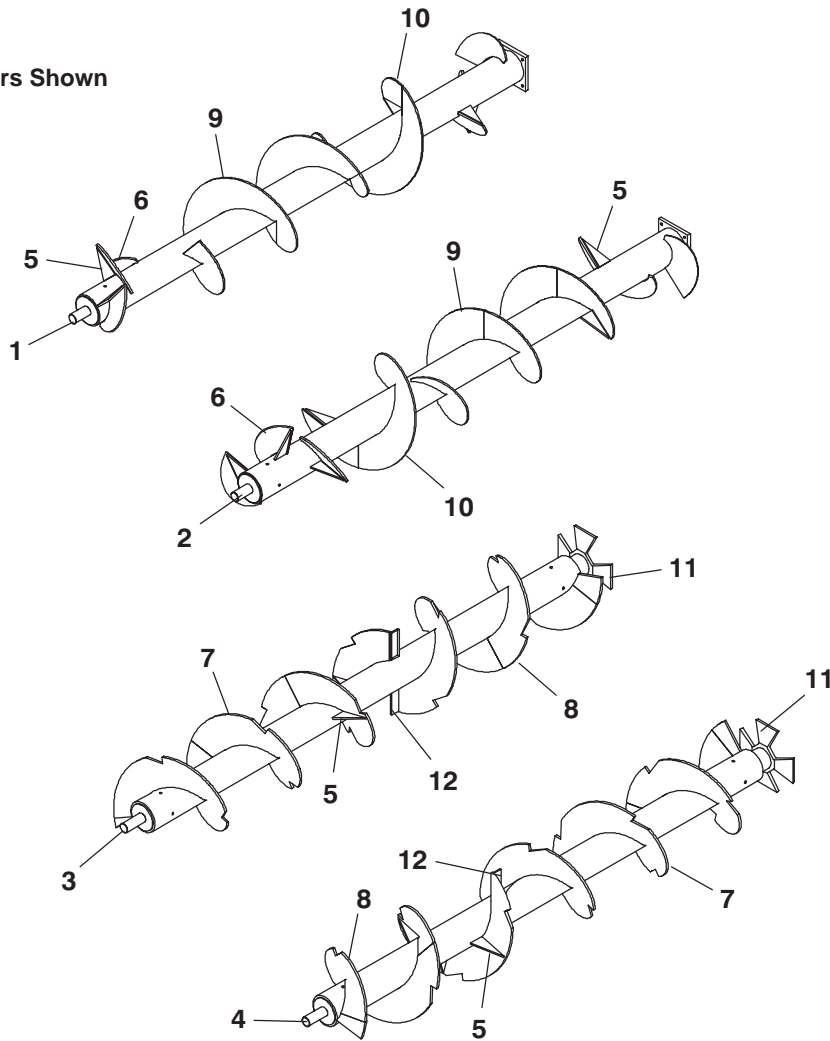
Ref. No.	Part No.	Description	Qty. Req.
	081464	JACK/ASSY - WESBAR	1
		CONSISTS OF:	
01	061276	PIN & CHAIN	1
02	081462	TUBE/INNER ASSY	1
03	081465	TUBE/OUTER ASSY	1
04	126735	CRANK/JACK	1
05	077838	CAP/TOP	1
06	094283	KIT/INTERNAL PARTS	1
07	077836	KIT/GEAR	1



Ref. No.	Part No.	Description	Qty. Req.
	081464	JACK/ASSY - HAMMERBLOW	1
		CONSISTS OF:	
01	061276	PIN & CHAIN	1
02	117915	SW INNER TUBE ASSY 13.5	1
03	117916	SW FINAL ASSY KIT #5	1
04	117917	CRANK ASSY SW	1
05	117918	GEAR BOX COVER	1
06	652142	CB 1/4X3	2
07	653005	HN 1/4	2

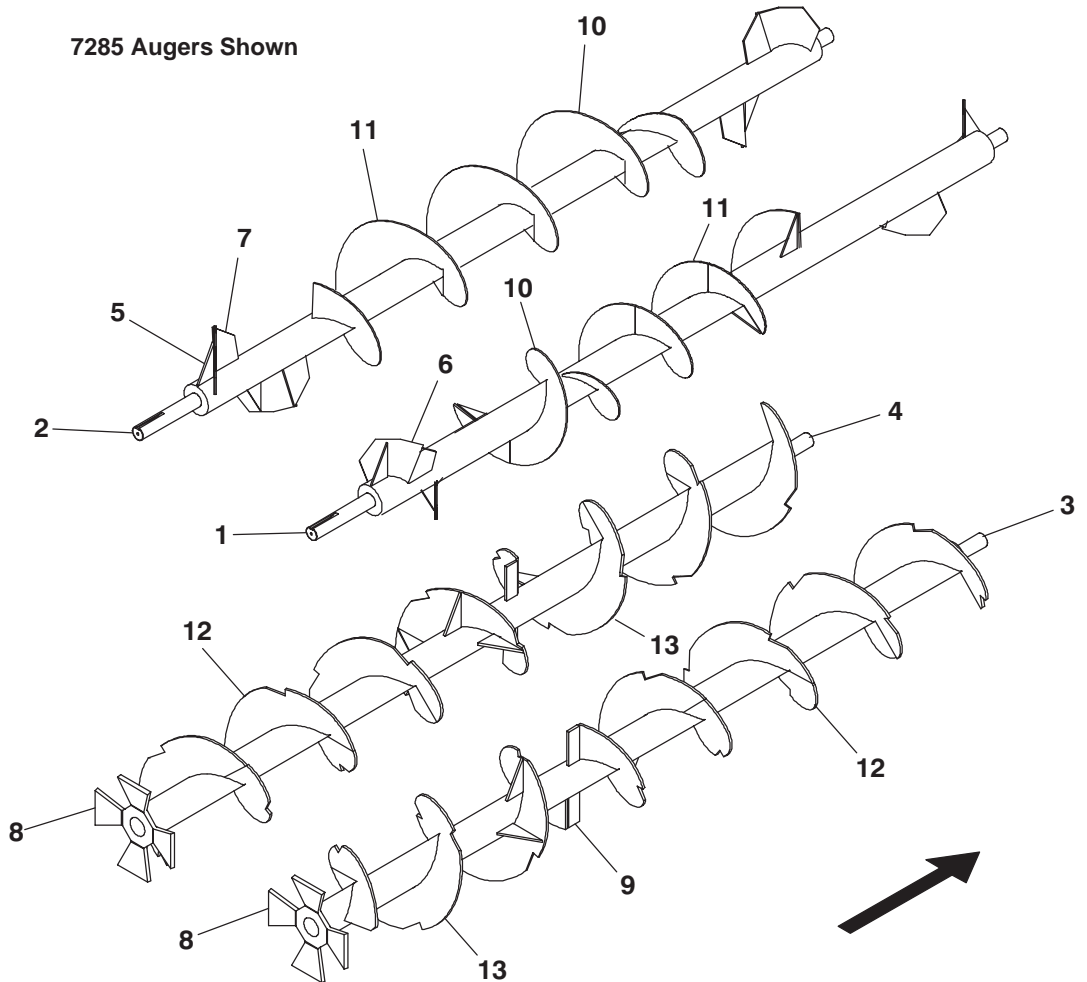
MF7285/7335 - AUGER COMPONENTS (AFTER SN6199 - 7285 & SN10099 - 7335)

7285 Augers Shown



Ref. No.	Part No.	Description	Qty. Req.	Ref. No.	Part No.	Description	Qty. Req.
01	094809 _a	AUGER/TOP RT (7285)	1	07	094311 _c	FLIGHT/NOTCHED 1/2 RT	AR
	124780 _a	AUGER/TOP RT (7335)	1	08	094312 _c	FLIGHT/NOTCHED 1/2 LT	AR
02	094810 _a	AUGER/TOP LT (7285)	1	09	094314 _c	FLIGHT/SECT 3/8 RT	AR
	124781 _a	AUGER/TOP LT (7335)	1	10	094313 _c	FLIGHT/SECT 3/8 LT	AR
03	124791 _b	AUGER/BOTTOM RT (7285)	1	11	094315	STAR/AUGER DRIVE	2
	124725 _b	AUGER/BOTTOM RT (7335)	1	12	124703	PADDLE/UNLOADING	4
04	124792 _b	AUGER/BOTTOM LT (7285)	1	a) The 7285 & 7335 Top Augers each use a total of 3 of 094314, 2 of 094313, 8 of 124704 & 6 of 124802.			
	124726 _b	AUGER/BOTTOM LT (7335)	1	b) The 7285 & 7335 Bottom Augers each use a total of 1 of 094315, 4 of 094311, 3 of 094312, and 6 of 124704.			
05	124704	SUPPORT/AUGER	28	c) The Flighting Section profile and length may have to be trimmed to be an exact replacement in the location being repaired. Use the old Flighting as a template.			
06	124802	ARM/TOP AUGER	12				

MF7285/7335 - AUGER COMPONENTS (BEFORE SN6200 - 7285 & SN10100 - 7335)

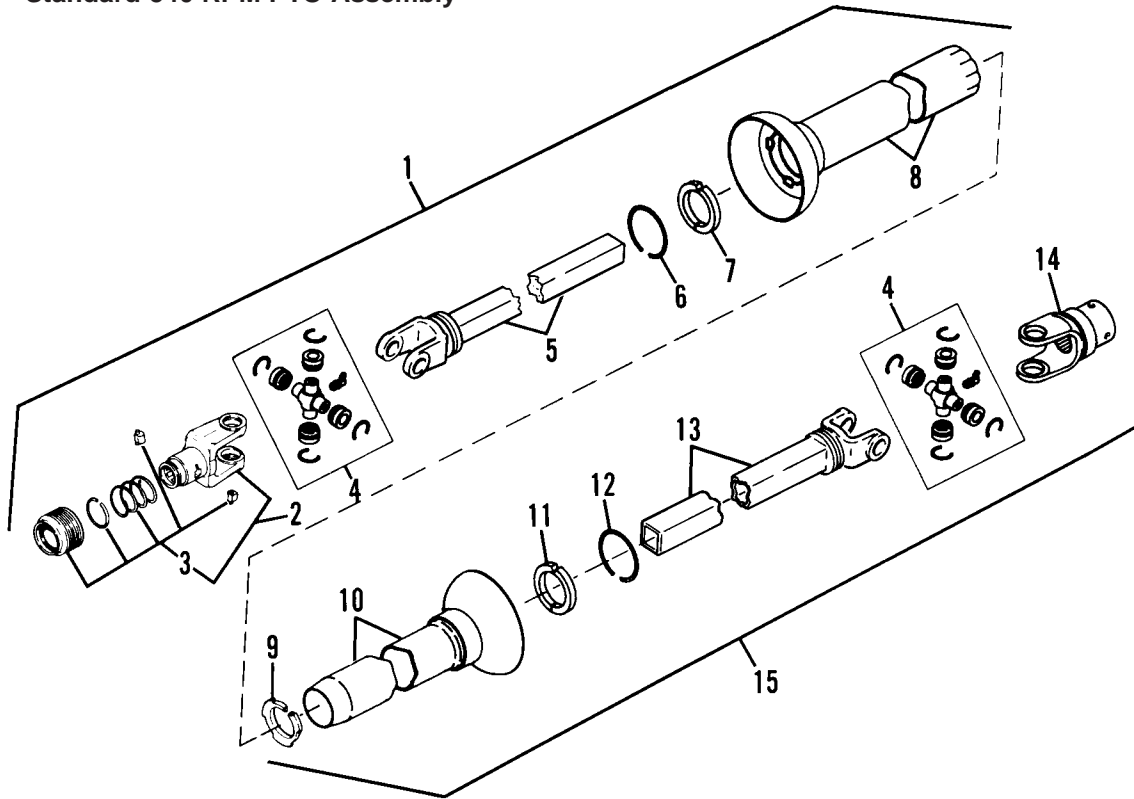


Ref. No.	Part No.	Description	Qty. Req.	Ref. No.	Part No.	Description	Qty. Req.
01	092753 _a	AUGER/TOP RT (7285)	1	08	094315	STAR/AUGER DRIVE	2
	092769 _a	AUGER/TOP RT (7335)	1	09	099088	PADDLE/UNLOADING	4
02	092751 _a	AUGER/TOP LT (7285)	1	10	099086 _c	FLIGHT/SECT LT	AR
	092768 _a	AUGER/TOP LT (7335)	1	11	099087 _c	FLIGHT/SECT RT	AR
03	092757 _b	AUGER/BOTTOM RT (7285)	1	12	099089 _c	FLIGHT/NOTCHED RT	AR
	092771 _b	AUGER/BOTTOM RT (7335)	1	13	099090 _c	FLIGHT/NOTCHED LT	AR
04	092756 _b	AUGER/BOTTOM LT (7285)	1				
	092770 _b	AUGER/BOTTOM LT (7335)	1				
05	099085	SUPPORT/AUGER	20				
06	099083	PADDLE/AUGER	8				
07	099084	PADDLE/SUPPORT	8				

a) The 7285 & 7335 Top Augers each use a total of 4 of 099083, 4 of 099084, 4 of 099085 & (AR) of 099086 & 099087.
b) The 7285 & 7335 Bottom Augers each use a total of 6 of 099085, 4 of 099088, (AR) of 099089, (AR) of 099090 and 1 of 144402.
c) The Flying Section profile and length may have to be trimmed to be an exact replacement in the location being repaired. Use the old Flying as a template.

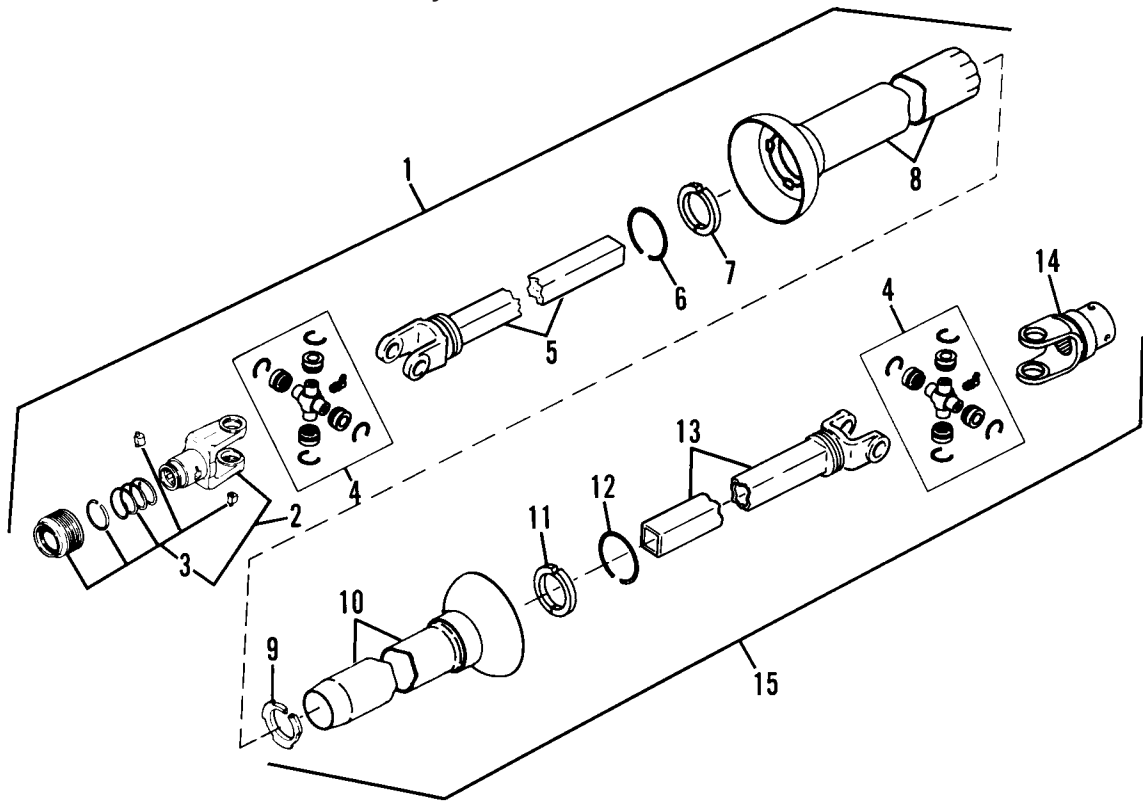
MF7285/7335 - UNIVERSAL DRIVES

Standard 540 RPM PTO Assembly



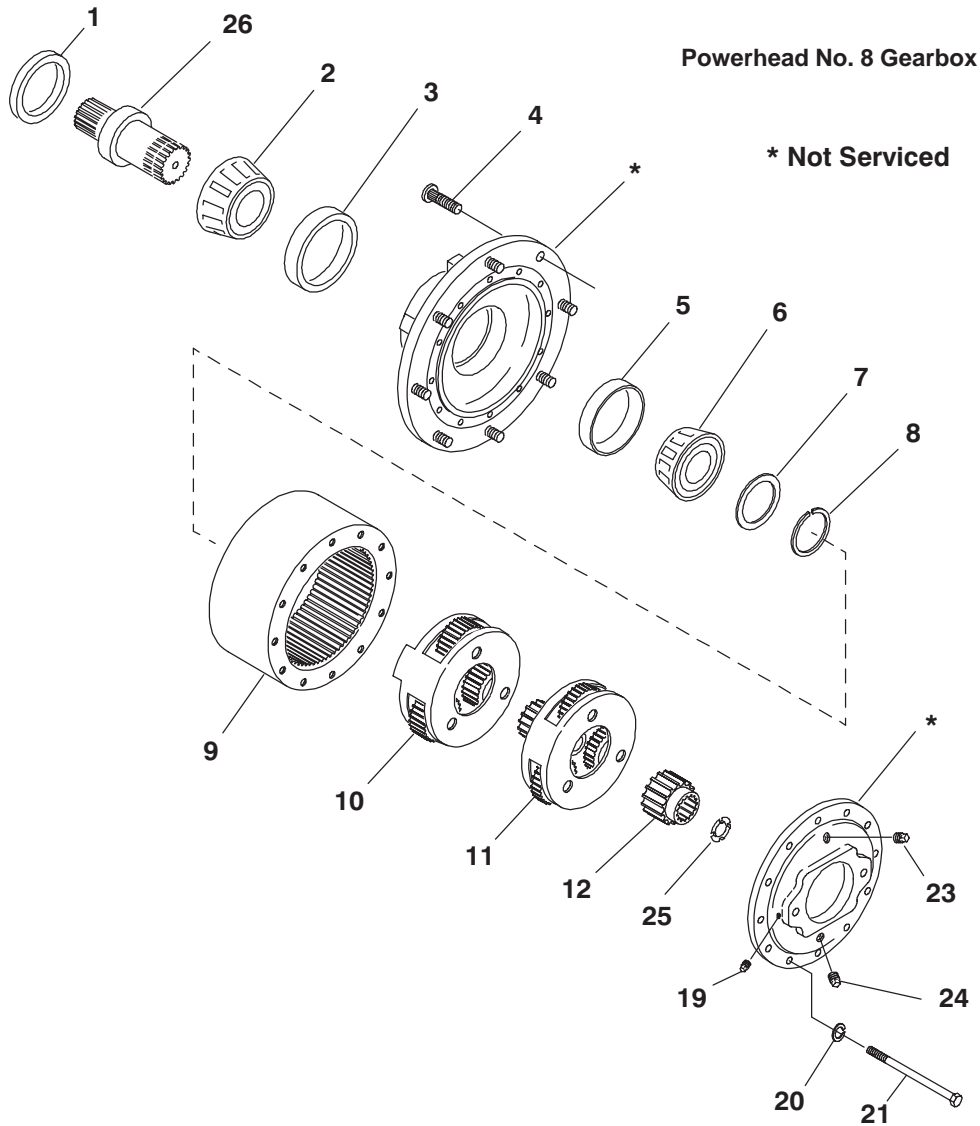
Ref. No.	Part No.	Description	Qty. Req.	Ref. No.	Part No.	Description	Qty. Req.
01	092716	PTO SHAFT/FRONT HALF	1	08	092717	GUARD/OUTER (FRONT)	1
02	065247	YOKE/SLIDE	1	09	510215	BEARING/CENTRALIZER	1
03	095166	KIT/SLIDE LOCK	1	10	092720	GUARD/INNER (REAR)	1
04	045327	YOKE/SLIDE	2	11	095132	BEARING/NYLON	1
	570009	FITTING/GREASE	2	12	510100	RETAINER/BEARING	1
05	092718	JOINT/W/SQ. SHAFT	1	13	092721	JOINT/W/SQ. TUBE	1
06	510100	RETAINER/BEARING	1	14	081507	YOKE/IMPLEMENT END	1
07	095130	BEARING/NYLON	1	15	092719	PTO SHAFT/REAR HALF	1

1000 RPM PTO Assembly



Ref. No.	Part No.	Description	Qty. Req.	Ref. No.	Part No.	Description	Qty. Req.
01	092698	PTO SHAFT/FRONT HALF	1	08	092717	GUARD/OUTER (FRONT)	1
02	510233	YOKE/SLIDE	1	09	510215	BEARING/CENTRALIZER	1
03	095166	KIT/SLIDE LOCK	1	10	092720	GUARD/INNER (REAR)	1
04	045327	YOKE/SLIDE	2	11	095132	BEARING/NYLON	1
	570009	FITTING/GREASE	2	12	510100	RETAINER/BEARING	1
05	092718	JOINT/W/SQ. SHAFT	1	13	092721	JOINT/W/SQ. TUBE	1
06	510100	RETAINER/BEARING	1	14	081507	YOKE/IMPLEMENT END	1
07	095130	BEARING/NYLON	1	15	092719	PTO SHAFT/REAR HALF	1

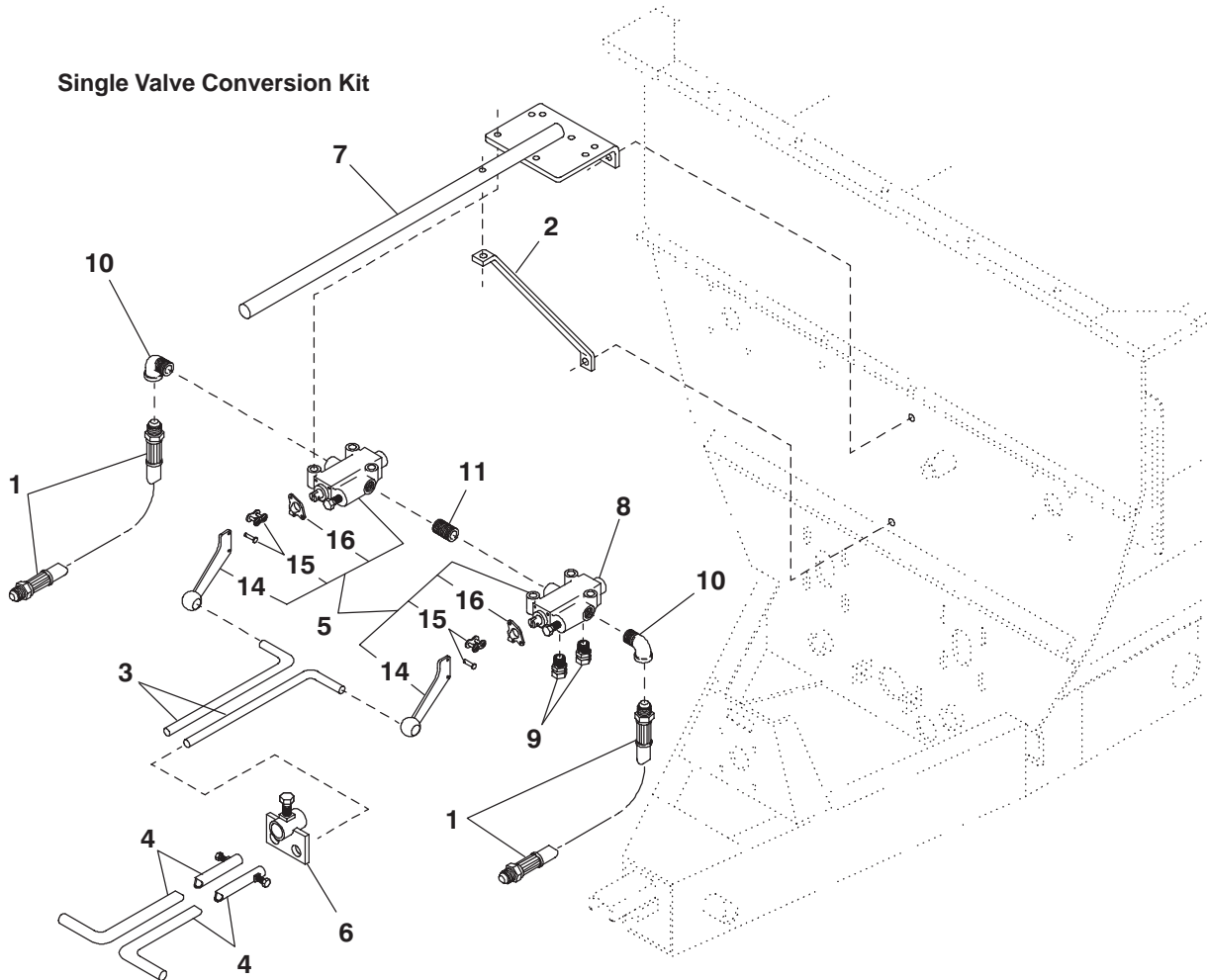
MF7285/7335 - GEARBOX, POWERHEAD NO. 8



Ref. No.	Part No.	Description	Qty. Req.	Ref. No.	Part No.	Description	Qty. Req.
	092742	GEARBOX/POWERHEAD NO. 8	1	11	092936	CARRIER/PRIMARY ASSY	1
		CONSISTS OF:		12	092935	GEAR/SUN	1
01	094376	SEAL/OIL	1	19	660000	PLUG/PIPE 1/8 SQ HD	2
02	119225	BEARING/CONE	1	20	089991	FW 3/8	12
03	119224	BEARING/CUP	1	21	650605	CS 3/8X5-1/2	12
04	041879	BOLT/WHEEL	8	22	120796	SEAL/OIL	1
05	119226	BEARING/CUP	1	23	660004	PLUG/PIPE 1/2	1
06	119227	BEARING/CONE	1	24	057569	PLUG/MAGNETIC PIPE	1
07	110489	WASHER/THRUST	1	25	080303	WASHER/THRUST	1
08	092938 _a	KIT/THRUST WASHER RET	1	26	119804	SHAFT/OUTPUT	1
09	092934	GEAR/RING	1				
10	092937	CARRIER/SECONDARY ASSY	1				

a) Select the widest Snap Ring that matches groove in Shaft.

Single Valve Conversion Kit



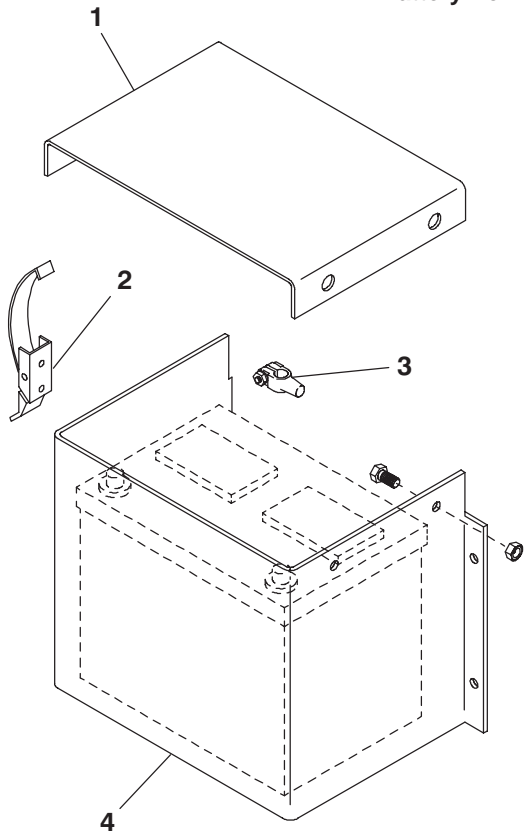
Ref. No.	Part No.	Description	Qty. Req.	Ref. No.	Part No.	Description	Qty. Req.
	804570	SINGLE VALVE CONVERSION	1	08	092703 _a	KIT/DETENT MANUAL VALVE	1
		CONSISTS OF:			650579	CS 3/8X1-3/4 (HN, LW, FW)	3
01	067848	HOSE/ASSY (96" LONG)	2	09	580058	UNION/HYD FITTING	2
02	092323	BRACE/INDICATOR	1	10	660014	ELBOW/PIPE REDUCING	2
	650528	CS 3/8X2 (HN, LW)	1	11	660058	NIPPLE/CLOSE 3/4 NPT	1
03	092700	HANDLE/VALVE	2	12	091442 _b	DECAL/DANGER ROTATING AUGER	1
	655006	CP 1/8X1	2	13	093653 _b	DECAL/WARNING ROT DR LN	1
04	092701	HANDLE/CONSOLE	2	14	119817	HANDLE	2
05	092702	VALVE/HYDRAULIC	2	15	119818	KIT/PIN	2
	650528	CS 3/8X2 (HN, LW, FW)	3	16	119819	BRACKET/HANDLE	2
06	092704	HANGER	1				
	650485	CS 5/16X5/8	1				
07	092705	MOUNT/VALVE	1				
	650490	CS 3/8X1 (HN, LW)	3				

a) Used only on indicated valve.

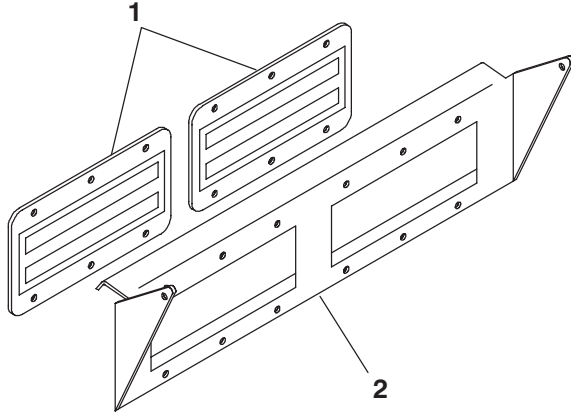
b) Included with the Kit but NOT shown; refer to Decal Locations information for proper location.

MF7285/7335 - ACCESSORIES

Battery Box



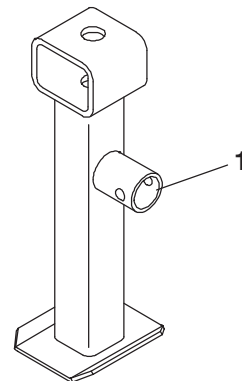
Magnet Assembly



Ref. No.	Part No.	Description	Qty. Req.
	804569	BATTERY BOX	1
		CONSISTS OF:	
01	092707	COVER/BATTERY BOX	1
	650487	CS 5/16X1 (LN)	2
02	092708	LATCH/OVER CENTER	1
	650387	RHMS #10-32X1/2 (HN, LW)	2
03	068244	CLAMP/BATTERY	2
04	092706	BOX/BATTERY	1
	650490	CS 3/8X1 (N,L)	4

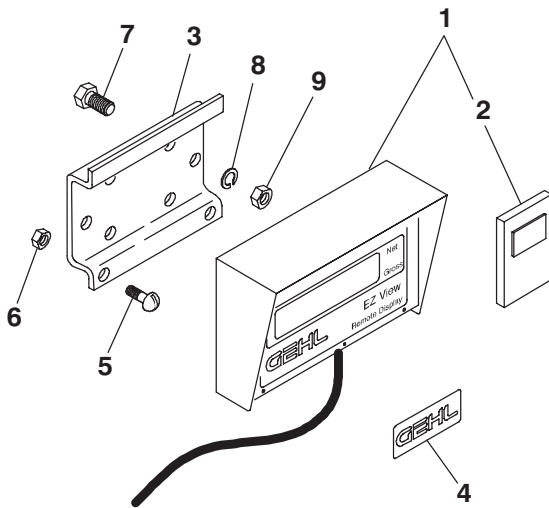
Ref. No.	Part No.	Description	Qty. Req.
	804568	MAGNET ASSY	1
		CONSISTS OF:	
01	092693	MAGNET - CONVEYOR	2
	650945	RHMS 1/4X3/4 (HN, LW)	12
02	092692	MAGNET PLATE	1
	650490	CS 3/8X1 (LN, 2FW)	2

3-Point Scale Stand



Ref. No.	Part No.	Description	Qty. Req.
	805436	STAND/MF 3-POINT SCALE	1
		CONSISTS OF:	
01	094135	STAND/3-POINT SCALE ASSY	1

**Remote Scale Indicator
(Requires Model 3200 Scale)**

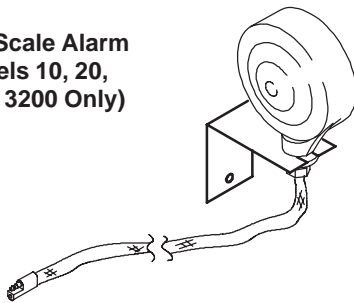


Ref. No.	Part No.	Description	Qty. Req.
	806326	REMOTE INDICATOR T/R KIT	1
		CONSISTS OF:	
01	118241	REMOTE INDICATOR T/R	1
	092795	REMOTE INDICATOR MODEL 20R	1
02	092988	TRANSMITTER/WIRELESS	1
03	092684	BRACKET/INDICATOR	1
04	118242	DECAL/GEHL	1
05	650815	RHMS#1024-3/4	2
06	650550	HN #1024	2

Customer Supplied Hardware

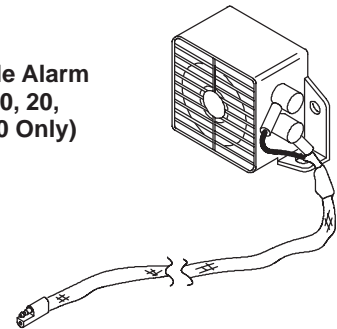
07	650490	CS 3/8X1	4
08	654026	LW 3/8	4
09	653010	HN 3/8	4

**Visual Scale Alarm
(Models 10, 20,
2100 & 3200 Only)**



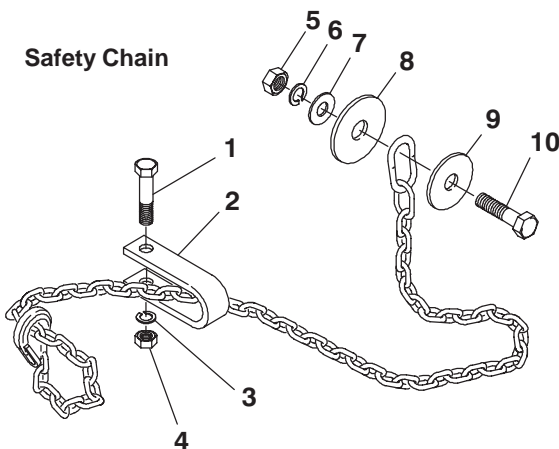
Ref. No.	Part No.	Description	Qty. Req.
	804778	VISUAL SCALE ALARM	1

**Audible Scale Alarm
(Models 10, 20,
2100 & 3200 Only)**



Ref. No.	Part No.	Description	Qty. Req.
	804777	AUDIBLE SCALE ALARM	1

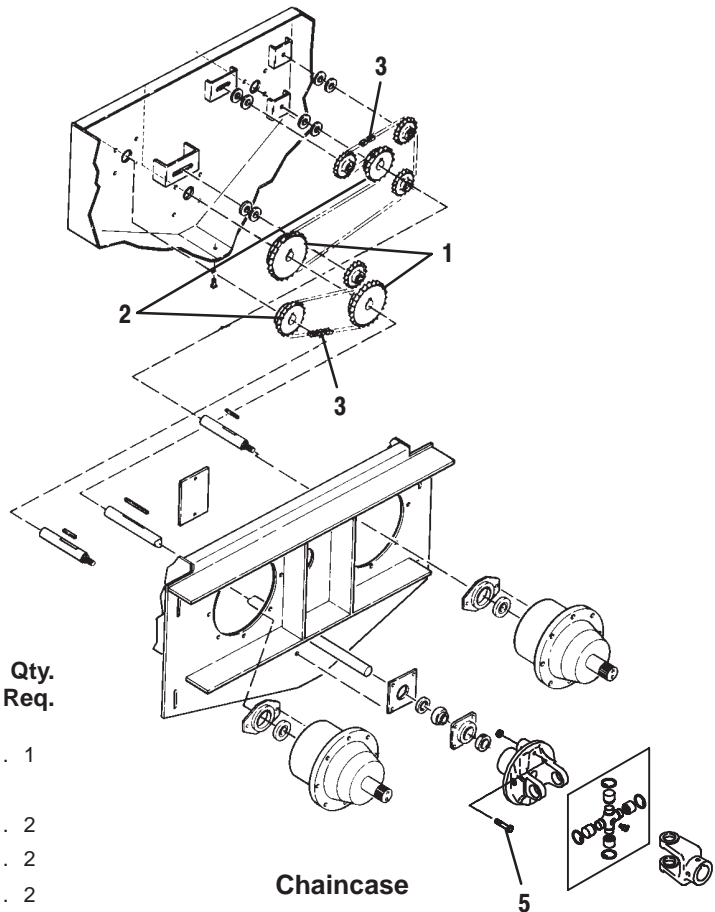
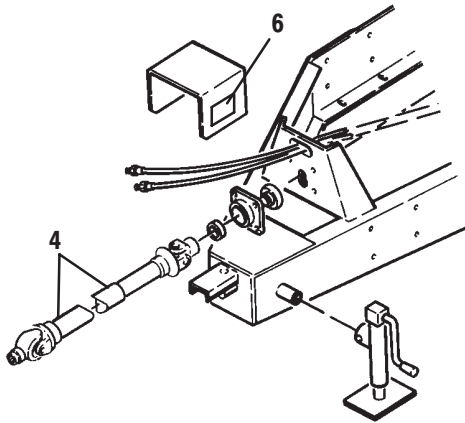
Safety Chain



Ref. No.	Part No.	Description	Qty. Req.
	142966	CHAIN/SAFETY TOW 10 TON	1
		CONSISTS OF:	
01	650695	CS 5/8X3-1/2	1
02	080894	CLEVIS	1
03	654032	LW 5/8	1
04	653021	HN 5/8	1
05	653026	HN 3/4	1
06	654034	LW 3/4	1
07	654014	FW 3/4	1
08	043912	FW 1-1/32 SPECIAL	1
09	069076	FW 25/32	1
10	650172	CS 3/4X3-1/4	1

MF7285/7335 - ACCESSORIES

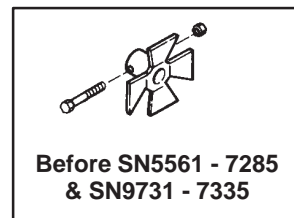
1000 RPM PTO Conversion



NOTE: Shear Bolt MUST Be changed when converting to 1000 RPM!

Ref. No.	Part No.	Description	Qty. Req.
	092694	1000 RPM PTO CONVERSION	1
		CONSISTS OF:	
01	092695	SPROCKET/21T	2
	650214	SHSS-CP 3/8X1/2	2
02	092696	SPROCKET/30T	2
	650214	SHSS-CP 3/8X1/2	2
03	500161	LINK/OFFSET (#60) CHAIN	1
04	092697 _a	SHAFT/PTO	1
05	080452 _b	CS 1/4X2 (SHEAR BOLT)	1
		(AFTER SN5560 - 7285 & 9730 - 7335)	
	092784 _b	CS 5/16X3 (SHEAR BOLT)	1
		(BEFORE SN5561 - 7285 & 9731 - 7335)	
06	093465	DECAL/WARNING 1000 RPM	1

- a) Not available as a service part. For breakdown see paged entitled, 'Universal Drives'.
- b) Order 080453 (After SN) or 904388 (Before SN). Kits contain 8 Shear Bolts & 8 Locknuts.



Index

A

Accessories
1000 RPM Conversion Kit, 30
3-Point Scale Stand, 28
Battery Box, 28
Magnet Assembly, 28
Remote Scale Indicator Kit, 29
Safety Chain, 29
Scale Alarm
Audible, 29
Visual, 29
Single Valve Conversion Kit, 27
Auger, 18
Bearings, 18
Components, 22–23
Axles, 12–13

C

Chaincase, 10–11

D

Decal Application, 2
Decal Locations, 2–5
Discharge Conveyor
One-Piece, 14–15
Two-Piece, 16–17
Discharge Gate, 6–7

G

Gearbox, Model 8, 26

H

Hitchjack, 6–7
Fulton, 21
Hammerblow, 21
Wesbar, 21
Hydraulic Cylinders, 20
Hydraulic Motor, 20
Hydraulics, 6–7

P

Paint Notice, 2
PTO, 6–7

R

Rear Drive & Guard, 8–9

S

Scale, 12–13

T

Transport Lightx, 19

U

Universal Drives, 24–25

W

Weighbars, 12–13
Wheels, 12–13

MF7285/7335 - NUMERICAL INDEX

Part No.	Page No.	Ref. No.	Part No.	Page No.	Ref. No.	Part No.	Page No.	Ref. No.	Part No.	Page No.	Ref. No.
H6098A	07	12	067926	02	02	091881	11	15	092607	15	18
B11433A	09	09	068244	28	03	091882	07	30	092608	15	17
R13062	11	05	069076	29	09	091882	17	32	092608	17	14
009476	11	20	069387	11	06	091882	20	00	092610	15	05
041879	13	15	071401	19	07	091884	11	10	092610	17	20
041879	26	04	073788	20	06	091886	15	15	092611	15	11
042903	15	08	073788	20	06	091886	17	16	092615	17	09
042903	17	08	076082	07	03	091889	07	35	092616	17	11
043836	13	16	076082	11	07	091890	11	19	092617	17	27
043912	29	08	077836	21	07	091891	07	17	092618	17	25
045327	11	31	077838	21	05	091892	15	03	092619	15	21
045327	24	04	078657	13	15	091892	17	19	092619	17	24
045327	25	04	079152	13	19	091893	15	04	092620	17	17
045581	13	25	080124	02	26	091893	17	10	092621	17	02
047542	13	19	080247	02	05	091894	07	32	092622	17	03
048635	13	14	080303	26	25	091895	07	24	092623	17	12
048637	13	20	080452	30	05	091896	07	15	092624	17	31
048638	13	18	080453	11	29	091897	15	25	092625	17	28
048967	17	40	080894	29	02	091898	13	17	092626	17	01
049498	20	01	081462	21	02	091899	11	03	092627	17	26
049499	20	02	081464	07	06	091905	09	15	092628	17	04
055342	13	31	081464	21	00	091907	07	14	092629	17	05
055648	19	05	081464	21	00	091908	15	19	092630	17	30
056845	11	18	081465	21	03	091908	17	33	092631	17	29
057569	26	24	081507	11	30	091912	07	04	092632	17	39
057650	07	31	081507	24	14	091912	11	08	092634	17	13
057653	07	34	081507	25	14	091913	18	01	092635	07	20
058212	11	17	083666	07	05	091914	18	03	092640	18	04
058654	15	23	083666	11	09	091915	09	02	092642	07	29
060510	02	03	089689	20	03	091918	09	16	092643	09	10
060511	02	04	089689	20	03	091918	09	16	092646	13	11
061276	21	01	089690	20	05	091923	15	07	092651	07	09
061276	21	01	089693	20	02	091923	17	07	092658	11	25
062404	17	36	089867	18	02	091947	07	08	092665	11	02
062405	17	38	089991	26	20	092282	02	13	092666	07	25
062889	07	36	091396	02	24	092323	27	02	092667	09	19
065247	24	02	091397	02	24	092600	15	10	092670	07	27
065500	15	22	091438	02	06	092600	17	23	092673	07	22
065500	17	34	091442	02	07	092601	15	09	092675	13	09
065500	20	00	091442	27	12	092601	17	18	092681	09	11
066717	13	21	091444	02	08	092602	15	01	092683	07	13
067457	15	24	091446	02	09	092602	17	22	092684	13	05
067457	17	37	091447	02	10	092603	15	02	092684	29	03
067493	02	01	091448	02	11	092603	17	21	092692	28	02
067769	17	35	091727	02	12	092604	15	13	092693	28	01
067848	27	01	091880	11	16	092605	15	12	092694	30	00
						092606	15	14	092695	30	01

MF7285/7335 - NUMERICAL INDEX

Part No.	Page No.	Ref. No.	Part No.	Page No.	Ref. No.	Part No.	Page No.	Ref. No.	Part No.	Page No.	Ref. No.
092696	30	02	092744	09	12	093465	02	19	110201	09	22
092679	13	08	092745	07	11	093465	30	06	110484	11	28
092697	30	04	092749	07	07	093466	02	19	110489	26	07
092698	25	01	092750	07	21	093489	02	20	110776	07	11
092700	27	03	092751	23	02	093519	20	03	110777	07	11
092701	27	04	092752	09	08	093653	02	21	112443	13	24
092702	27	05	092753	23	01	093653	27	13	112444	13	24
092703	27	08	092754	09	07	093759	07	30	112518	13	04
092704	27	06	092755	09	06	093759	20	00	112519	13	04
092705	27	07	092756	23	04	093967	02	22	112520	13	04
092706	28	04	092757	23	03	094135	28	01	112706	19	08
092707	28	01	092758	13	10	094261	07	28	112710	02	25
092708	28	02	092759	13	23	094283	21	06	112884	19	01
092716	07	01	092760	13	12	094290	20	07	112885	19	02
092716	24	01	092761	13	07	094291	20	01	112886	19	03
092717	24	08	092762	13	06	094315	22	11	112888	19	10
092717	25	08	092763	09	13	094376	26	01	113109	07	33
092718	24	05	092764	13	04	094386	20	07	113252	19	09
092718	25	05	092765	07	11	094387	20	01	117915	21	02
092719	07	02	092768	23	02	094472	07	32	117916	21	03
092719	24	15	092769	23	01	094552	20	05	117917	21	04
092719	25	15	092770	23	04	094553	20	04	117918	21	05
092720	24	10	092771	23	03	094554	20	02	118241	13	26
092720	25	10	092772	07	27	094809	18	08	118241	29	01
092721	24	13	092779	15	16	094809	22	01	118242	29	04
092721	25	13	092779	17	15	094810	18	09	118588	22	09
092723	09	03	092784	30	05	094810	22	02	118589	22	10
092724	09	01	092794	13	04	094926	11	21	118592	22	07
092725	09	21	092795	13	26	094963	02	23	118593	22	08
092726	09	14	092795	29	01	095041	02	24	119224	26	03
092727	09	05	092796	13	27	095042	02	24	119225	26	02
092728	07	26	092797	13	29	095130	24	07	119226	26	05
092729	07	28	092798	13	30	095130	25	07	119227	26	06
092730	07	37	092934	26	09	095132	24	11	119738	07	19
092731	09	17	092935	26	12	095132	25	11	119804	26	26
092732	09	18	092936	26	11	095166	24	03	119817	27	14
092733	11	24	092937	26	10	095166	25	03	119818	27	15
092734	11	23	092938	26	08	097636	11	22	119819	27	16
092735	11	11	092988	13	28	099083	23	06	120796	26	22
092738	11	28	092988	29	02	099084	23	07	120814	13	03
092739	11	22	093020	02	14	099085	23	05	122617	02	26
092740	11	01	093030	13	02	099086	23	10	122736	02	27
092741	11	12	093367	02	15	099087	23	11	124703	22	12
092742	11	27	093369	02	16	099088	23	09	124704	22	05
092742	26	00	093373	02	17	099089	23	12	124725	18	10
092743	09	20	093457	02	18	099090	23	13	124725	22	03
									124726	18	11






MF7285/7335 - NUMERICAL INDEX

Part No.	Page No.	Ref. No.	Part No.	Page No.	Ref. No.	Part No.	Page No.	Ref. No.	Part No.	Page No.	Ref. No.
124726	22	04	510100	24	12	650490	29	07	654026	29	08
124780	18	08	510100	25	06	650513	20	04	654032	18	07
124780	22	01	510100	25	12	650550	29	06	654032	29	03
124781	18	09	510215	24	09	650605	26	21	654034	29	06
124781	22	02	510215	25	09	650647	18	05	660000	26	19
124791	18	10	510233	25	02	650663	19	11	660004	11	13
124791	22	03	520084	15	06	650695	29	01	660004	26	23
124792	18	11	520084	17	06	650815	29	05	660007	07	10
124792	22	04	520153	11	04	650863	19	12	660014	27	10
124802	22	06	520194	07	18	650927	20	06	660058	27	11
124975	09	04	520195	07	16	652142	21	06	804568	28	00
125946	19	04	520208	11	26	653005	21	07	804569	28	00
126735	21	04	570006	07	38	653010	29	09	804570	27	00
128372	20	04	580058	27	09	653021	18	06	804777	29	00
142966	29	00	600360	13	13	653021	29	04	804778	29	00
144402	23	08	600798	13	01	653026	29	05	805436	28	00
145234	02	28	650172	29	10	653102	13	22	806326	29	00
152226	19	00	650373	20	05	654012	11	14	903457	11	29
500161	30	03	650426	19	06	654014	29	07	904413	11	29

TORQUE SPECIFICATIONS

NOTE: Use these torque values when tightening **GEHL** hardware (excluding: Locknuts and Self-tapping, Thread Forming and Sheet Metal Screws) unless specified otherwise.

All torque values are in Lb-Ft except those marked with an * which are Lb-In
(For metric torque value Nm, multiply Lb-Ft value by 1.355 or Lb-In value by 0.113)

Unified National Thread	Grade 2 		Grade 5 		Grade 8 	
	Dry	Lubed	Dry	Lubed	Dry	Lubed
8-32	19*	14*	30*	22*	41*	31*
8-36	20*	15*	31*	23*	43*	32*
10-24	27*	21*	43*	32*	60*	45*
10-32	31*	23*	49*	36*	68*	51*
1/4-20	66*	50*	9	75*	12	9
1/4-28	76*	56*	10	86*	14	10
5/16-18	11	9	17	13	25	18
5/16-24	12		19	14		20
3/8-16	20	15	30	23	45	35
3/8-24	23	17	35	25	50	
7/16-14	32	24	50	35	70	55
7/16-20	36	27	55	40	80	60
1/2-13	50	35	75	55	110	80
1/2-20	55	40	90	65	120	90
9/16-12	70	55	110	80	150	110
9/16-18	80	60	120	90	170	130
5/8-11	100	75	150	110	220	170
5/8-18	110	85	180	130	240	180
3/4-10	175	130	260	200	380	280
3/4-16	200	150	300	220	420	320
7/8-9	170	125	430	320	600	460
7/8-14	180	140	470	360	660	500
1-8	250	190	640	480	900	680
1-14	270	210	710	530	1000	740
Metric Course Thread	Grade 8.8 		Grade 10.9 		Grade 12.9 	
	Dry	Lubed	Dry	Lubed	Dry	Lubed
M6-1	8	6	11	8	13.5	10
M8-1.25	19	14	27	20	32.5	24
M10-1.5	37.5	28	53	39	64	47
M12-1.75	65	48	91.5	67.5	111.5	82
M14-2	103.5	76.5	145.5	108	176.5	131
M16-2	158.5	117.5	223.5	165.5	271	200

GEHL®

Gehl Company 143 Water Street, P.O. Box 179, West Bend, WI 53095-0179, U.S.A.