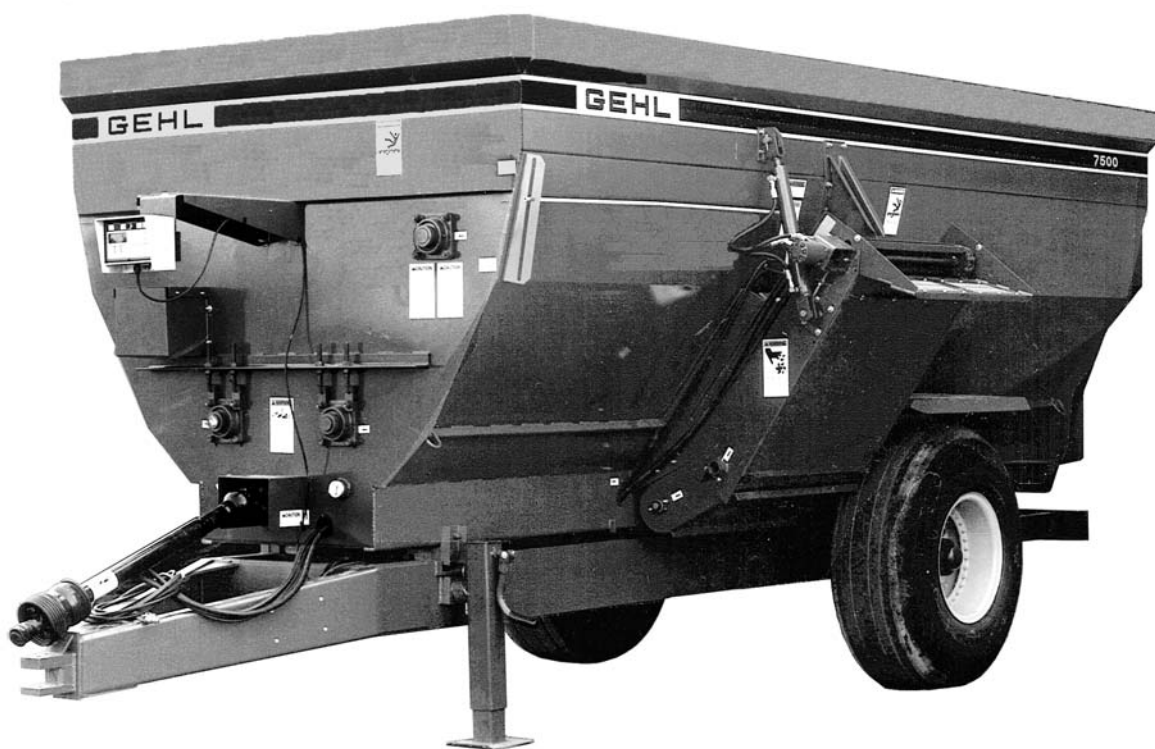


Form No.
907102
Replaces
904302

7435/7500

Mixer Feeders



PARTS MANUAL

GEHL® AGRICULTURE

Introduction

When ordering service parts, specify the correct part number, full description, quantity required, the unit model number and serial number.

The Mixer Feeder model and serial number is on a plate located on the left side of the Main Frame at the front left corner. “Right” and “Left” are determined from a position standing behind the Mixer Feeder facing the direction of travel. From this position, the Discharge Gate is on the “left” side.

GEHL® Company reserves the right to make changes or improvements in the design or construction of any part of the unit without incurring the obligation to install such changes on any previously delivered units.

NOTE: *On original tire replacement, Company policy prohibits the sale of replacement tires for all GEHL machinery. Replacement Wheel Sets are available and tire size information is called out with the Wheel Sets to facilitate replacement tire selection. ALL REPLACEMENT TIRES MUST BE PURCHASED LOCALLY.*

Refer to the abbreviations table located on this page for the various fastener descriptions. Standard attaching hardware torque values are also provided on the inside back cover.

In the exploded view parts list, Reference Numbers may have additional information following the Reference Number. A Tear Drop symbol will indicate an application of a “wet” product such as oil, and the number inside the Tear Drop will correspond to the description in the Parts List. Also, a number inside of a hexagon will be the torque value required, in foot pounds, on the associated Reference Number. Items shown in the parts list that do not have Reference Numbers are shown for reference purposes only and are NOT available for purchase.

Unless otherwise specified, all Cap Screws or Bolts are Grade 5, cadmium or zinc plated; Hexagon Nuts for Grade 5 Screws or Bolts are Grade B; Hexagon Nuts for other Screws or Bolts are Grade A.

NOTE: *The following abbreviations may be used herein:*

ASSD – Assembled
 ASSY – Assembly
 CB – Carriage Bolt

CCW	– Counterclockwise
CP	– Cotter Pin
CS	– Cap Screw (Hexagon Head)
CTR	– Center
CW	– Clockwise
DEG	– Degree
DIA	– Diameter
FCS	– Flanged Cap Screw
FHMS	– Flat Head Machine Screw
FL	– Flanged
FLN	– Flanged Lock Nut (Hexagon)
FLS	– Flanged Lock Screw (Hexagon)
FW	– Flat Washer
GA	– Gauge
GR	– Grade
HD	– Hard or Head
HN	– Hex Nut
INCL	– Includes
JT	– Joint
LG	– Large
LH	– Left Hand
LW	– Lock Washer
LN	– Lock Nut
M	– Metric
MM/mm	– Millimeter
NF	– National Fine
PB	– Plow Bolt
PTO	– Power Take Off
RH	– Right Hand
RHMS	– Round Head Machine Screw
RPM	– Revolutions Per Minute
RT	– Right
SERR	– Serrated
SHCS	– Socket Head Cap Screw
SHSS	– Socket Head Set Screw
SN	– Serial Number or Slotted Nut
SQ	– Square
T	– Tooth or Teeth
TFS	– Thread Forming Screw
THMS	– Truss Head Machine Screw
THRD	– Thread
WLDMT	– Weldment
#	– Number
()	– (Quantity Used Here)
	– Torque Required in foot pounds
	– Indicates a Fluid Application

TABLE OF CONTENTS

Introduction	Inside Front Cover
Table of Contents	1
Decal Locations	2-5
PTO, Hitchjack, Wheels, Discharge Gate & Hydraulics	6-7
Rear Drive & Guard	8-9
Chaincase	10-11
Axles, Scale & Weighbars	12-13
One-Piece Discharge Conveyor	14-15
Two-Piece Discharge Conveyor	16-17
Augers & Front Bearings	18
Transport Lights	19
Component Breakdowns	20-26
Hydraulic Motor & Cylinders	20
Hitchjack	21
Augers	22-23
Universal Drives	24-25
Gearbox (Powerhead No. 8)	26
Accessories	27-30
Single Valve Conversion Kit	27
Battery Box	28
Magnet Assembly	28
Safety Tow Chain	29
Remote Scale Indicator (Requires Model 3200 Scale)	29
Audible & Visual Scale Alarms (Models 2100 & 3200 Only)	29
1000 RPM Conversion Kit	30
Alphabetical Index	31
Numerical Index	32-34
Standard Hardware Torque specifications	Inside Back Cover

DECAL LOCATIONS

GENERAL INFORMATION

Decal Locations information is provided to assist in the proper selection and application of new decals, in the event the original decal(s) become(s) damaged or the machine is repainted. Refer to the listing for the illustration reference number, part number, description and quantity of each decal provided in the Kit. Refer to the appropriate illustration(s) for replacement location(s).

NOTE: Refer to the SAFETY Chapter of the Operator's Manual for the specific information provided on all of the various Safety Decals furnished in the Decal Kit(s).

To insure proper selection for correct replacement decal(s), compare all of the various close-up location photographs to your machine BEFORE starting to refinish the unit. Then circle each decal applicable to your machine and check off its part number in the listing. After you have verified all the decals needed for replacement, set aside unneeded decals for disposal.

NEW DECAL APPLICATION

Surfaces MUST be free from dirt, dust, grease and other foreign material before applying the new decal. To apply a solid-formed decal, remove the smaller portion of the decal backing paper and apply this part of the exposed adhesive backing to the clean surface while maintaining proper position and alignment. Slowly peel off the other portion of the backing paper while applying hand pressure to smooth out the decal surface.

PAINT NOTICE	
Use this list to order paint for refinishing machines with agricultural red and grey color scheme:	
906315	One Gal. AG Red
902872	One Qt. Light Grey
906316	6 (12 oz. Spray Cans) AG Red
902874	6 (12 oz. Spray Cans) Light Grey
Use this list to order paint for refinishing machines with blaze red and maize (yellow) color scheme:	
901225	One Gal. Blaze Paint
901226	One Gal. Maize Paint
610239	6 (12 oz. Spray Cans) Blaze Paint
610240	6 (12 oz. Spray Cans) Maize Paint



CAUTION

ALWAYS observe safety rules shown on decals. If decals become damaged, or if the unit is repainted, replace the decals. If repainting, BE SURE that ALL decals from the kit(s) which apply to your machine are affixed to your unit.

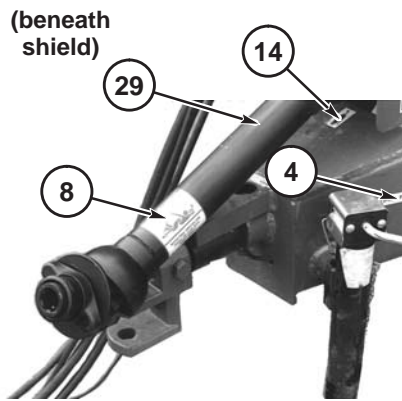
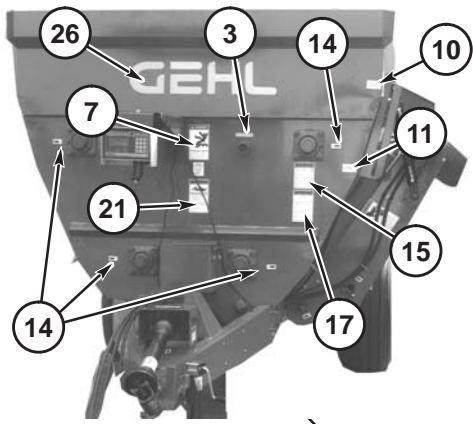
NOTE: For convenience, MF7335 photographs have been used. Decal locations are identical.

The Decal Set Number for the MF7435 is 113352 and the MF7500 is 113353. The Sets include the following:

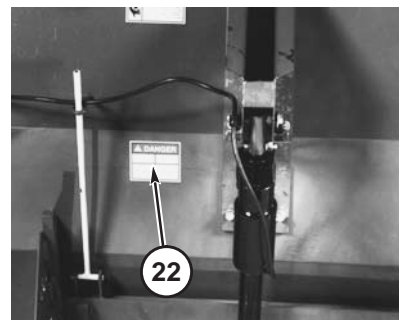
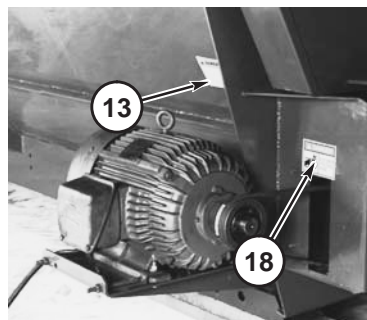
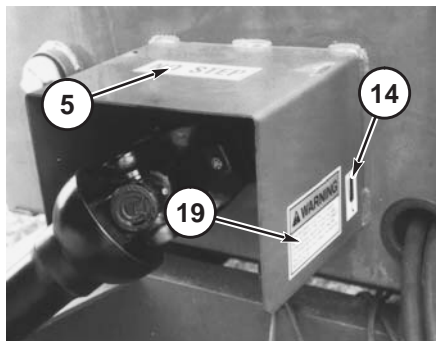
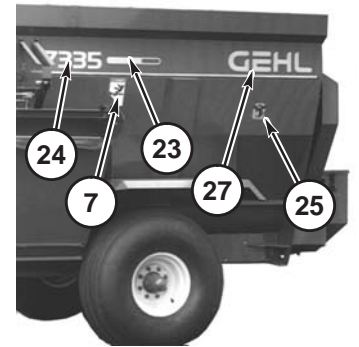
Ref. No.	Part No.	Description & Quantity
1.	067493	Red Reflector (3 Places)
2.	067926	Amber Reflector
5.	080247	NO STEP
6.	091438	WARNING - Chain Drive (2 Places)
7.	091442	DANGER - Rotating Auger (4 Places)
8.	091444	DANGER - Rotating Component
9.	091446	ATTENTION - Add Lubrication
10.	091447	Open
11.	091448	Closed
12.	091727	WARNING - Automatic Conveyor <u>Two-Piece Conveyor Only</u> (2 Places)
13.	092282	WARNING - Electrical Component Compliance <u>Stationary-mounted ONLY</u>
14.	093020	Lubrication Symbol (19 Places)
15.	093367	WARNING - Owner's Responsibility & Read Manual
16.	093369	WARNING - Hydraulic Oil & Unplugging
17.	093373	WARNING - General Safety
18.	093457	DANGER - Do NOT Operate With Shield Missing (3 Places)
19.	093466	WARNING - 540 RPM Operation ONLY
	093465	WARNING - 1000 RPM Operation ONLY <u>1000 RPM Converted Units ONLY</u>
20.	093489	WARNING - Pinch Point
21.	093653	WARNING - Rotating Drive Line
22.	093967	DANGER - Rotating Component <u>Stationary-mounted ONLY</u>
23.	094963	Colorbar (2 Places)
24.	095038	7435 (2 Places)
	091398	7435 (2 Places) <u>Early Style Models</u>
	095043	7500 (2 Places)
	091399	7500 (2 Places) <u>Early Style Models</u>
25.	112710	TMR COW (2 Places)
26.	122617	GEHL
	080124	GEHL (2 Places) <u>Early Style Models</u>
27.	122736	GEHL (2 Places)
28.	145234	SMV (Slow Moving Vehicle)
29.	143007*	DANGER - Shield Missing

*Not included in decal kit.

NOTE: Order Part No. 126757 for 10 ft. roll of Stripe replacement. Part No. 090909 for Early Style.



Front Master



Stationary-mounted Mixer Feeder Units Only

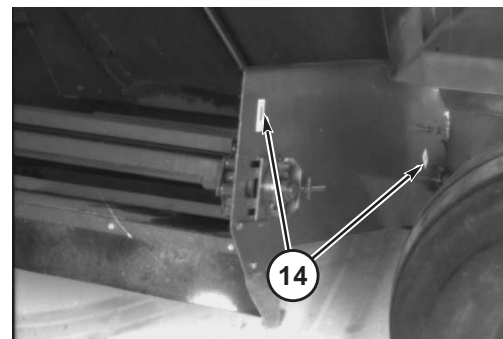
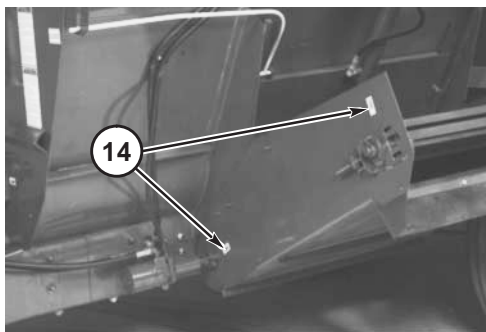
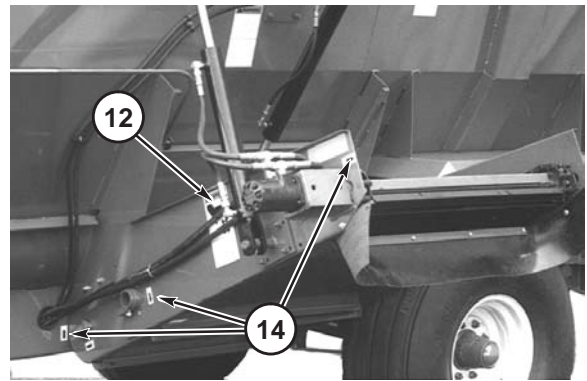
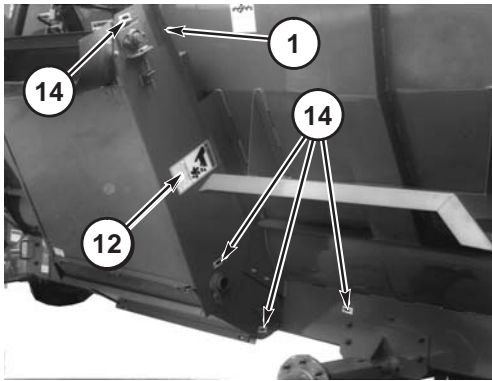
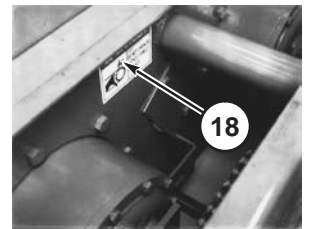
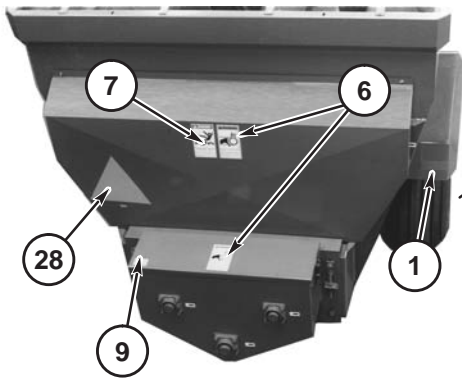
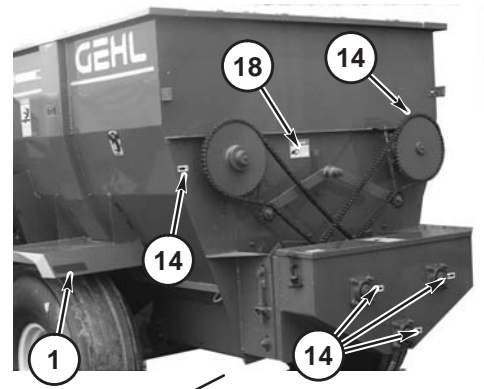
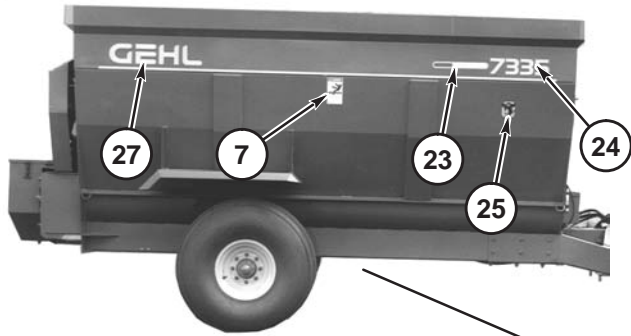
NOTE: This list is a repeat of the Decal List on a previous page and is provided for your convenience when selecting Decals from the second page of photographs.

Ref. Part

No. No. Description & Quantity

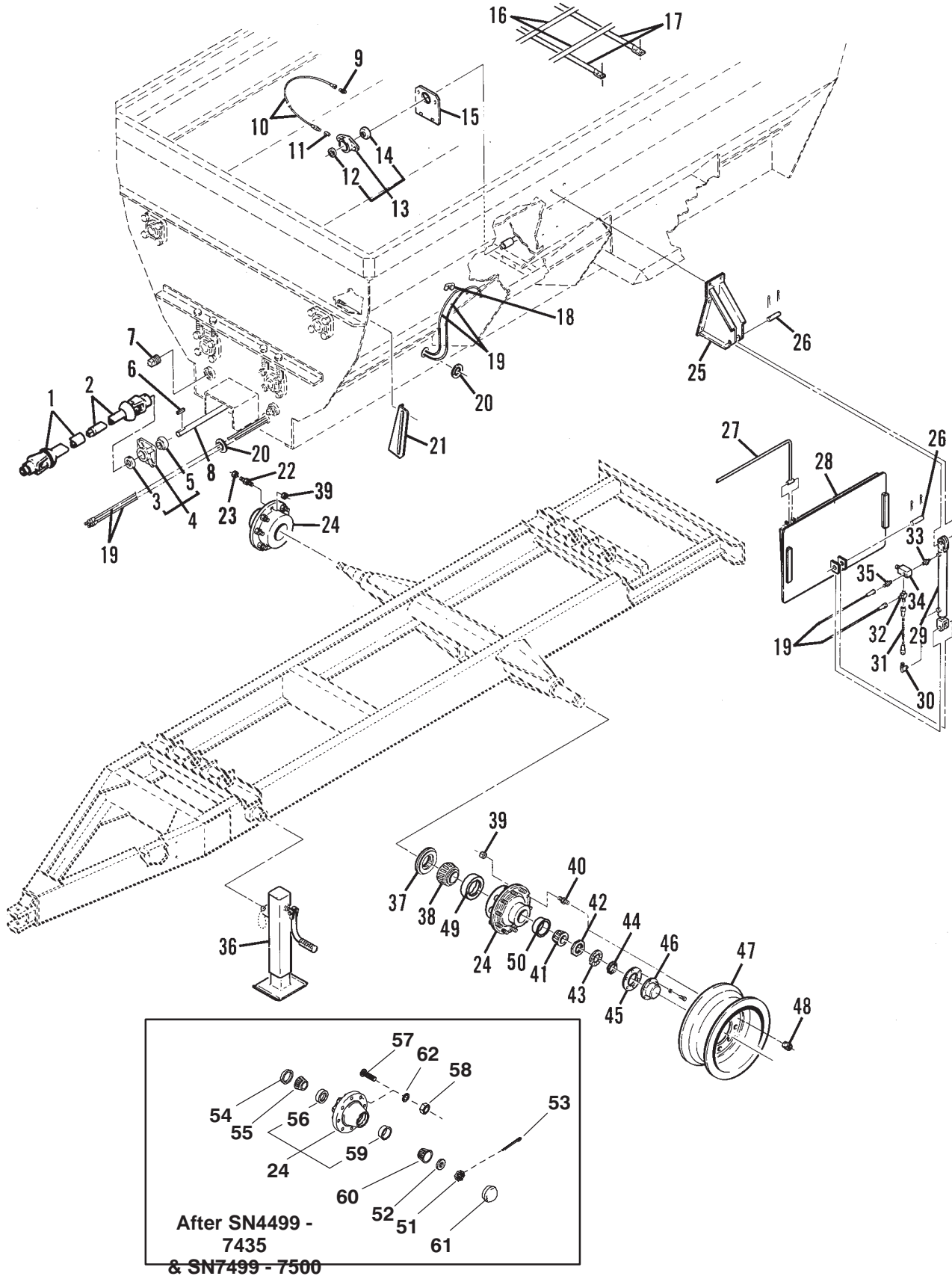
1.	067493	Red Reflector (3 Places)
2.	067926	Amber Reflector
3.	060510	Jack Storage Position
4.	060511	Jack Lifting Position
5.	080247	NO STEP
6.	091438	WARNING - Chain Drive (2 Places)
7.	091442	DANGER - Rotating Auger (4 Places)
8.	091444	DANGER - Rotating Component
9.	091446	ATTENTION - Add Lubrication
10.	091447	Open
11.	091448	Closed
12.	091727	WARNING - Automatic Conveyor <u>Two-Piece Conveyor Only</u> (2 Places)
13.	092282	WARNING - Electrical Component Compliance <u>Stationary-mounted ONLY</u>
14.	093020	Lubrication Symbol (19 Places)

15.	093367	WARNING - Owner's Responsibility & Read Manual
16.	093369	WARNING - Hydraulic Oil & Unplugging
17.	093373	WARNING - General Safety
18.	093457	DANGER - Do NOT Operate With Shield Missing (3 Places)
19.	093466	WARNING - 540 RPM Operation ONLY
	093465	WARNING - 1000 RPM Operation ONLY <u>1000 RPM Converted Units ONLY</u>
20.	093489	WARNING - Pinch Point
21.	093653	WARNING - Rotating Drive Line
22.	093967	DANGER - Rotating Component <u>Stationary-mounted ONLY</u>
23.	094963	Colorbar (2 Places)
24.	095041	7285 (2 Places)
	091396	7285 (2 Places) <u>Early Style Models</u>
	095042	7335 (2 Places)
	091397	7335 (2 Places) <u>Early Style Models</u>
25.	112710	TMR COW (2 Places)
26.	122617	GEHL
	080124	GEHL (2 Places) <u>Early Style Models</u>
27.	122736	GEHL (2 Places)
28.	145234	SMV (Slow Moving Vehicle)



One-piece Discharge Conveyor

MF7435/7500 - PTO, HITCHJACK, WHEELS, DISCHARGE GATE & HYDRAULICS_

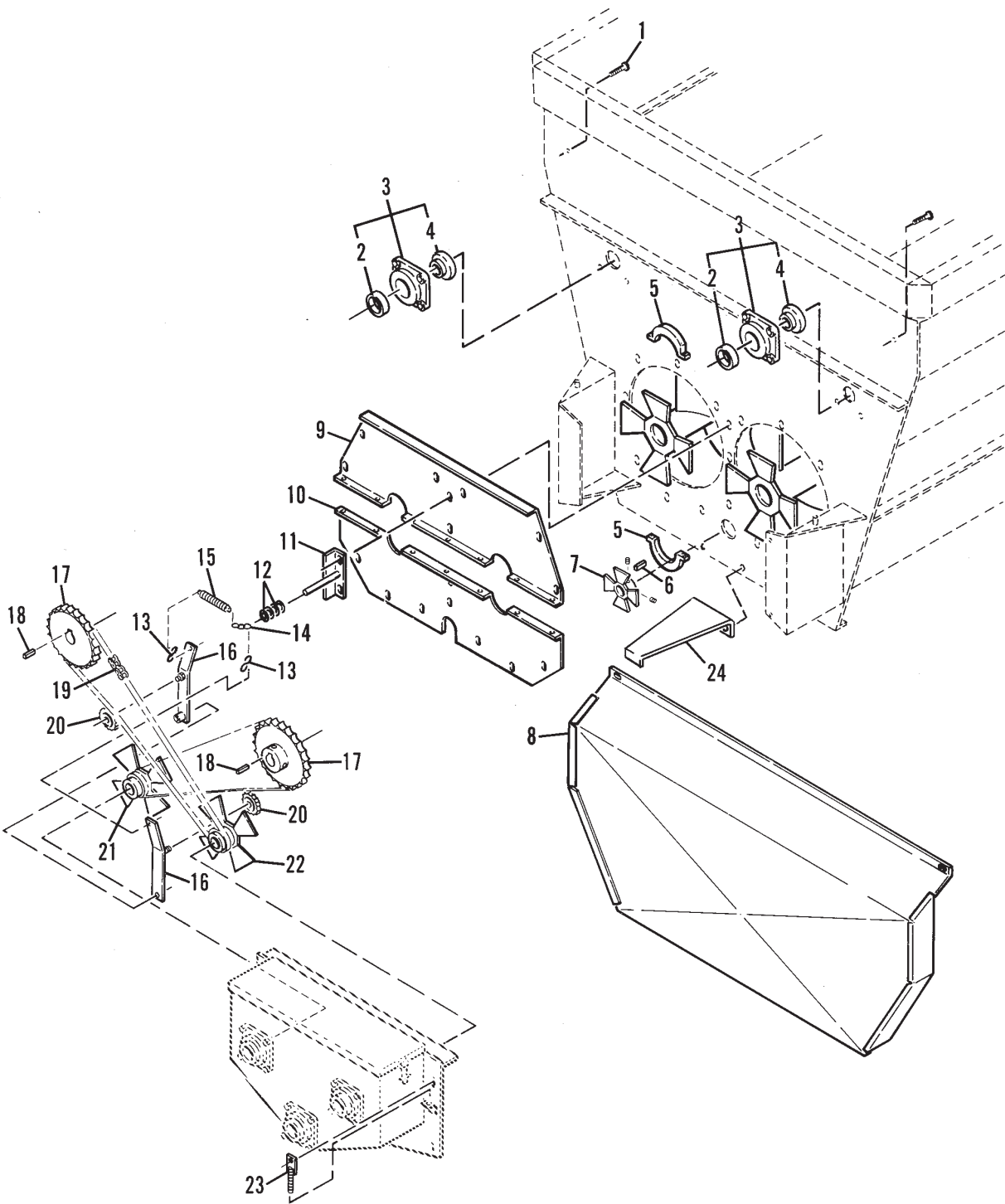


MF7435/7500 - PTO, HITCHJACK, WHEELS, DISCHARGE GATE & HYDRAULICS

Ref. No.	Part No.	Description	Qty. Req.	Ref. No.	Part No.	Description	Qty. Req.
01	084404 _a	PTO SHAFT/FRONT HALF	1	28	092730	DOOR	1
02	092778 _a	PTO SHAFT/REAR HALF	1	29	093759 _b	CYLINDER/HYDRAULIC 2X20 (LATER STYLE)	1
03	076082	COLLAR/BEARING	1				1
04	091912	FLANGE/BEARING ASSY	1		091882 _b	CYLINDER/HYDRAULIC 2X16 (EARLY STYLE)	1
	570014	FITTING/GREASE	1				1
	650453	CS 1/2X1-1/2 (HN, LW)	4	30	057650	FITTING/HYDRAULIC	1
05	083666	BEARING/BALL	1	31	094472	HOSE/ASSY 19-1/2" (LATER STYLE)	1
06	H6098A	KEY 3/8 SQX1-1/2	1		091894	HOSE/ASSY 14-1/2" (EARLY STYLE)	1
07	660007	PLUG/PIPE 2" NPT	2	32	113109	FITTING/TEE	1
08	099234	LINE/SHAFT (7435)	1	33	057653	FITTING/HYDRAULIC	1
	099208	LINE/SHAFT (7500)	1	34	091889	VALVE/RELIEF	1
09	570006	FITTING/GREASE	2	35	062889	FITTING/STRAIGHT	1
10	091907	HOSE/ASSY	2	36	099241 _c	JACK/ASSY 10,000 LB	1
11	091896	REDUCER/1/8 NPT FEMALE	2	37	099224	SEAL/GREASE	2
12	520195	COLLAR/BEARING	2	38	099225	BEARING/CONE (INNER)	2
13	091891	FLANGE/BEARING ASSY	2	39	099223	NUT/LOCK	20
	650453	CS 1/2X1-1/2 (HN, LW, FW)	4	40	099222	STUD/LT	10
14	520194	BEARING/BALL	2	41	099226	BEARING/CONE (OUTER)	2
15	119738	PLATE/MOUNT	2	42	110198	NUT/INNER	2
	650495	CS 1/2X1-1/4 (HN, LW, FW)	4	43	110199	WASHER/SPECIAL	2
16	099213	PIPE/GRID - LONG (7435)	4	44	110200	NUT/OUTER	2
	099202	PIPE/GRID - LONG (7500)	4	45	099228	GASKET/HUB CAP	2
	650487	CS 5/16X1 (FLN)	8	46	099227	CAP/HUB	2
17	099214	PIPE/GRID - SHORT	8		650484	CS 5/16X1/2 (LW)	12
	650487	CS 5/16X1 (FLN)	16	47	142496	WHEEL (49X17-10 TUBE-TYPE TIRE)	2
18	092673	CLIP/WIRE AND TUBE	4	48	099229	NUT/WHEEL LT	10
	650448	CS 1/4X3/4 (HN, LW, FW)	4	49	111358	CUP/BEARING (INNER)	10
19	099239	HOSE/ASSY 229" LONG	2	50	111359	CUP/BEARING (OUTER)	10
20	092666	TRIM/INSIDE	2	51	112193 _d	SN-NF 1-3/4	2
21	092728	BRACKET/INDICATOR ROD	1	52	112192 _d	WASHER	2
	650448	CS 1/4X3/4 (HN, LW, FW)	2	53	655046 _d	CP 5/32X1-3/4	2
22	099221	STUD/RT	10	54	112187 _d	SEAL/OIL	2
23	099230	NUT/WHEEL RT	10	55	112189 _d	CONE/BEARING (INNER)	2
24	094803	HUB/ASSY	2	56	112188 _d	CUP/BEARING (INNER)	2
	(AFTER SN4499 - 7435 & 7499 - 7500)		1	57	112184 _d	STUD/WHEEL	20
	099220	HUB AND RACE ASSY	2	58	112186 _d	NUT/WHEEL	20
	(BEFORE SN4500 - 7435 & 7500 - 7500)		1	59	112190 _d	CUP/BEARING (OUTER)	2
25	094232	BRACKET/DOOR CYL. (LATER STYLE)	1	60	112191 _d	CONE/BEARING (OUTER)	2
	(USED WITH 20" CYLINDER)		1	61	112195 _d	CAP/DUST	2
	099211	BRACKET/DOOR CYL. (EARLY STYLE)	1	62	112185 _d	WASHER/STUD	20
	(USED WITH 16" CYLINDER)		1				
	650495	CS 1/2X1-1/4 (LN)	4				
26	092642	HINGE PIN/DOOR	2				
	655020	CP 3/16X1-1/2	4				
27	099212	ROD/INDICATOR (7435)	1				
	099201	ROD/INDICATOR (7500)	1				

a) For components, see page titled 'Universal Drives'.
b) For components, see page titled 'Hydraulic Cylinders'.
c) For breakdown, see page titled 'Hitchjack Components'.
d) After SN4499 - 7435 & SN7499 - 7500

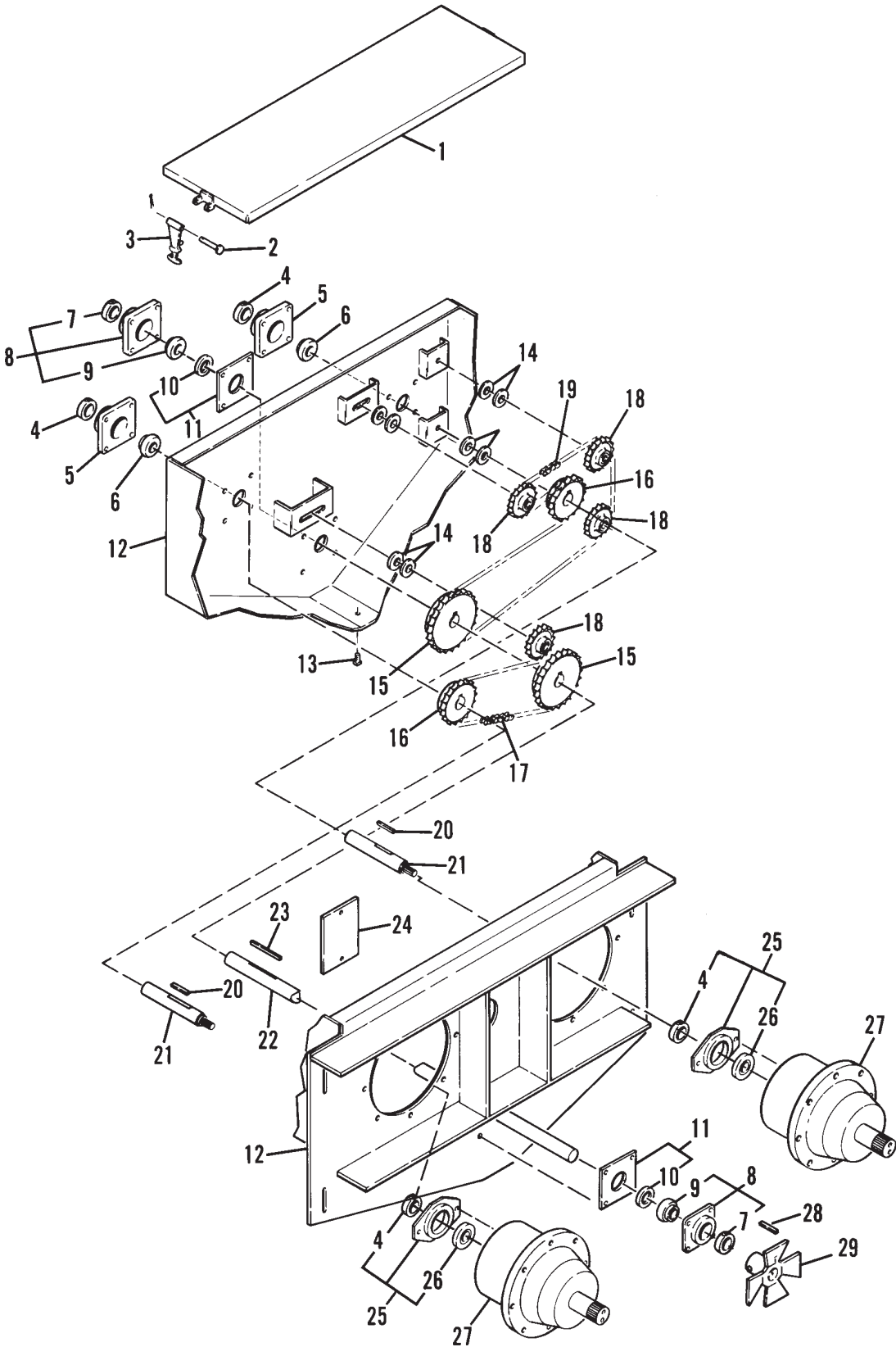
MF7435/7500 - REAR DRIVE & GUARD



MF7435/7500 - REAR DRIVE & GUARD

Ref. No.	Part No.	Description	Qty. Req.	Ref. No.	Part No.	Description	Qty. Req.
01	069066	CS 1/4X1 FULL THREAD (2) 1/4HN, LW, FW, WN	2	12	099242	BUSHING/MACHINE	AR
02	092724	COLLAR/BEARING	2	13	B11433A	S-HOOK	2
03	091915	FLANGE/BEARING	2	14	092643	CHAIN	2
	570014	FITTING/GREASE	2	15	092681	SPRING/EXTENSION	1
	650647	CS 5/8X2 (HN, LW)	8	16	092744	ARM/IDLER	2
04	092723	BEARING/BALL	2	17	099240	SPROCKET/42T	2
05	124975	WASHER/SEALING	4	18	092726	KEY 5/8SQX2	2
	650280	SHCS 5/16X2 (HN, LW)	4	19	099243	CHAIN (#100) OF 106 LINKS INCLUDES (1) 606065 PLAIN CONNECTOR	
06	092725	KEY 3/8 SQX1-1/2	1	20	099244	SPROCKET/IDLER 11T (2) 3/4LN	2
07	092727	DRIVE SHAFT/STAR	1	21	099232	HUB/DRIVE LT	1
	650201	SHSS 5/16X5/16	2	22	099233	HUB/DRIVE RT	1
08	099236	SHIELD/REAR ASSY	1	23	092667	BRACKET/ADJUSTMENT (4) 3/4 HN	2
09	092755	PANEL/UPPER FILLER	1		650163	CS 3/4X1-3/4 (HN, LW)	2
	650786	CB 3/8X1-1/4 (HN, LW, FW)	8	24	110201	STAND-OFF/ASSY	1
10	092754	PANEL/LOWER FILLER	1		650495	CS 1/2X1-1/4 (HN, LW)	2
	650573	CB 5/16X1 (HN, LW, FW)	7				
	650786	CB 3/8X1-1/4 (HN, LW, FW)	8				
11	092752	BRACKET/DLER	1				
	655020	CP 3/16X1-1/2	4				
	650773	CB 3/8X1-1/2 (HN, LW, FW)	2				

MF7435/7500 - CHAINCASE

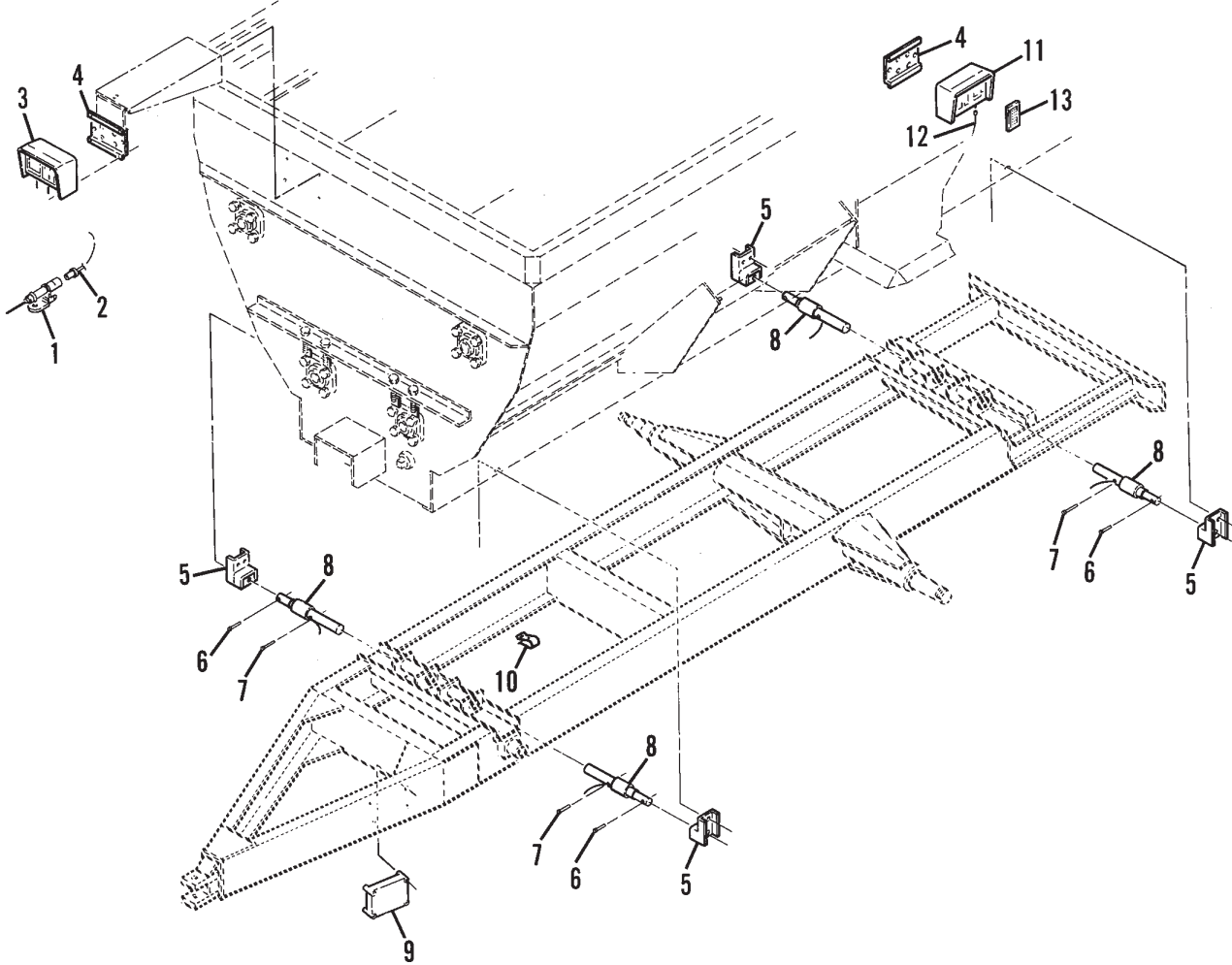


MF7435/7500 - CHAINCASE

Ref. No.	Part No.	Description	Qty. Req.	Ref. No.	Part No.	Description	Qty. Req.
01	092740	COVER/CHAINCASE	1	16	091880	SPROCKET/21T	2
02	092665	PIN/CLEVIS3/16X1-5/8	2	17	058212	CHAIN/ROLLER #60X66 LINKS	1
	650590	CP 1/16X1/2	2			INCLUDES (1) 500160 PLAIN CONNECTOR	
03	091899	HOOK/RUBBER	2	18	056845	SPROCKET/IDLER 15T	4
04	520153	COLLAR/BEARING	4		650710	CS 5/8X2-1/4 (HN, LW, 8FW)	4
05	R13062	HOUSING/BEARING	2	19	091890	CHAIN #60X110 LINKS	1
	570014	FITTING/GREASE	2			INCLUDES (1) 500160 PLAIN CONNECTOR	
	650569	CS 1/2X1-3/4 (HN, LW)	8	20	009476	KEY 5/16SQX1-1/4	2
06	069387	BEARING/BALL	2	21	094926	DRIVE SHAFT/PLANETARY	2
07	076082	COLLAR/BEARING	2	22	092739	INPUT SHAFT/CHAINCASE	1
08	091912	FLANGE/BEARING	2	23	092734	KEY 3/8SQX3	1
	570014	FITTING/GREASE	2	24	092733	COVER PLATE/GEAR PUMP	1
	650569	CS 1/2X1-3/4 (HN, LW)	8		650494	CS 1/2X1 (HN, LW)	2
09	083666	BEARING/BALL	2	25	092658	BEARING PLATE ASSY	2
10	091884	SEAL/OIL	2		650494	CS 1/2X1 (LW)	4
11	092735	PLATE/SEAL	2	26	520208	BEARING/BALL	2
12	092741	CHAINCASE	1	27	092742 _a	POWERHEAD NO. 8	2
	650163	CS 3/4x1-3/4 (HN, LW, FW)	4		651232	CS 9/16X1-3/4 (HN, LW)	16
13	660004	PLUG/PIPE 1/2	1	28	092725	KEY 3/8SQX1-1/2	1
14	654012	FW 5/8	AR	29	110197	STAR	1
15	091881	SPROCKET/27T	2		650833	CS 5/16X3 (LN)	16

a) For breakdown, see 'Powerhead No. 8 Gearbox' page.

MF7435/7500 - AXLES, SCALE & WEIGHBARS



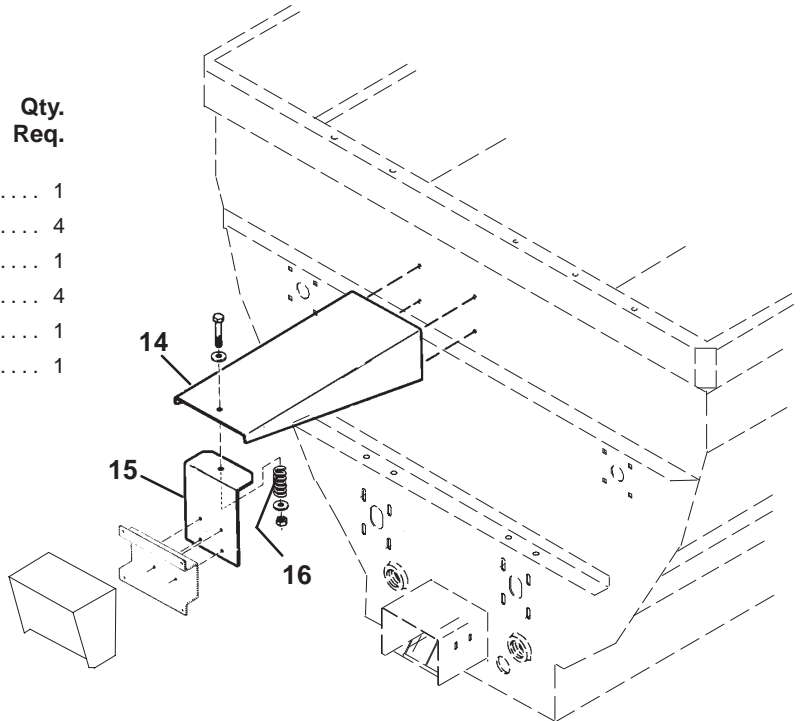
MF7435/7500 - AXLES, SCALE & WEIGHBARS

Ref. No.	Part No.	Description	Qty. Req.	Ref. No.	Part No.	Description	Qty. Req.
01	600798	SOCKET - TRACTOR ASSY	1	08	099238	WEIGHBAR W/21-FT CABLE	4
02	093030 _a	CORD/POWER	1	09	092679	BOX/JUNCTION W/15 FT CORD	1
03	112518	INDICATOR/MODEL 1500	1	10	092675	CLIP - CABLE, FRAME	AR
	112519	INDICATOR/MODEL 2100	1	11	118241	REMOTE/INDICATOR (OPTIONAL) (REQUIRES MODEL 3200 SCALE)	1
	112520	INDICATOR/MODEL 3200	1		092795 _c	REMOTE/INDICATOR MODEL 20R (OPTIONAL)	1
	099200	INDICATOR/MODEL 10	1	12	092796 _c	CABLE/INDICATOR TO REMOTE (OPTIONAL)	1
	092987 _b	INDICATOR/MODEL 20 (OPTIONAL) ...	1	13	092988 _{cd}	TRANSMITTER/WIRELESS (OPTIONAL)	1
04	092684	BRACKET/INDICATOR MTG	AR				
	650815	RHMS #10-24X3/4 (HN)	2				
05	099210	WEIGHBAR/ASSY MOUNTING	4				
	650453	CS 1/2X1-1/2 (HN, LW, FW)	8				
06	076102	PIN/CLEVIS 3/8X2-1/4	4				
	655006	CP 1/8X1	4				
07	604494	PIN/CLEVIS 3/8X2-3/4	4				
	655006	CP 1/8X1	4				

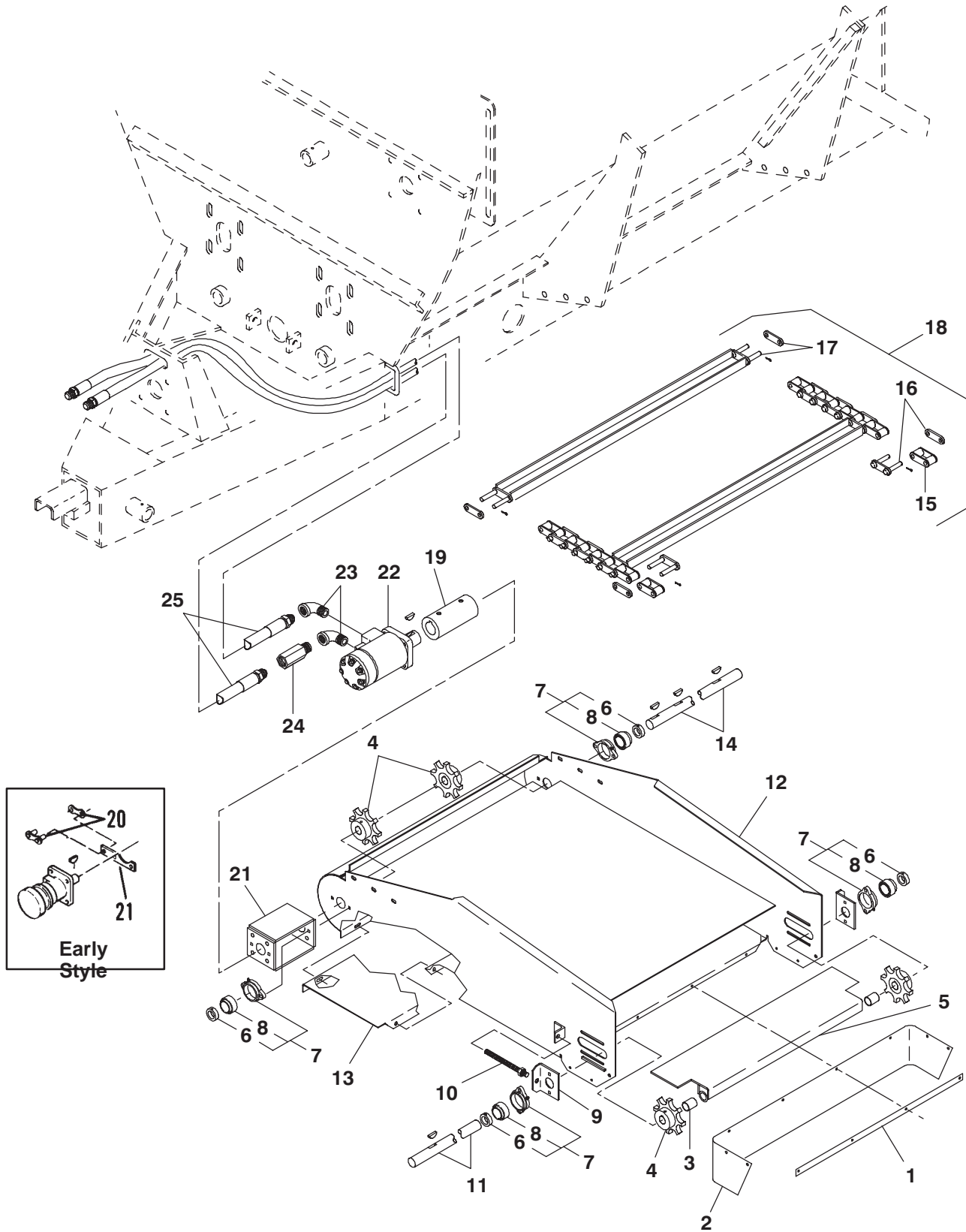
- a) For repair order 069129.
- b) Provides additional circuitry to connect a 092795 Remote Model 20R Indicator with a 092796 Indicator Cable.
- c) Used ONLY with 092987 Model 20 Indicator.
- d) Included with 092795 Remote Indicator.

Extended-view Indicator Mounting Parts

Ref. No.	Part No.	Description	Qty. Req.
14	092797	SUPPORT/INDICATOR	1
	650488	CS 3/8X3/4 (HN, LW)	4
15	092798	BRACKET/INDICATOR	1
	650542	CS 1/4X1/2 (HN, LW)	4
16	055342	SPRING/COMPRESSION	1
	650644	CS 1/2X3 (NILN, 2FW)	1



MF7435/7500 - ONE-PIECE DISCHARGE CONVEYOR

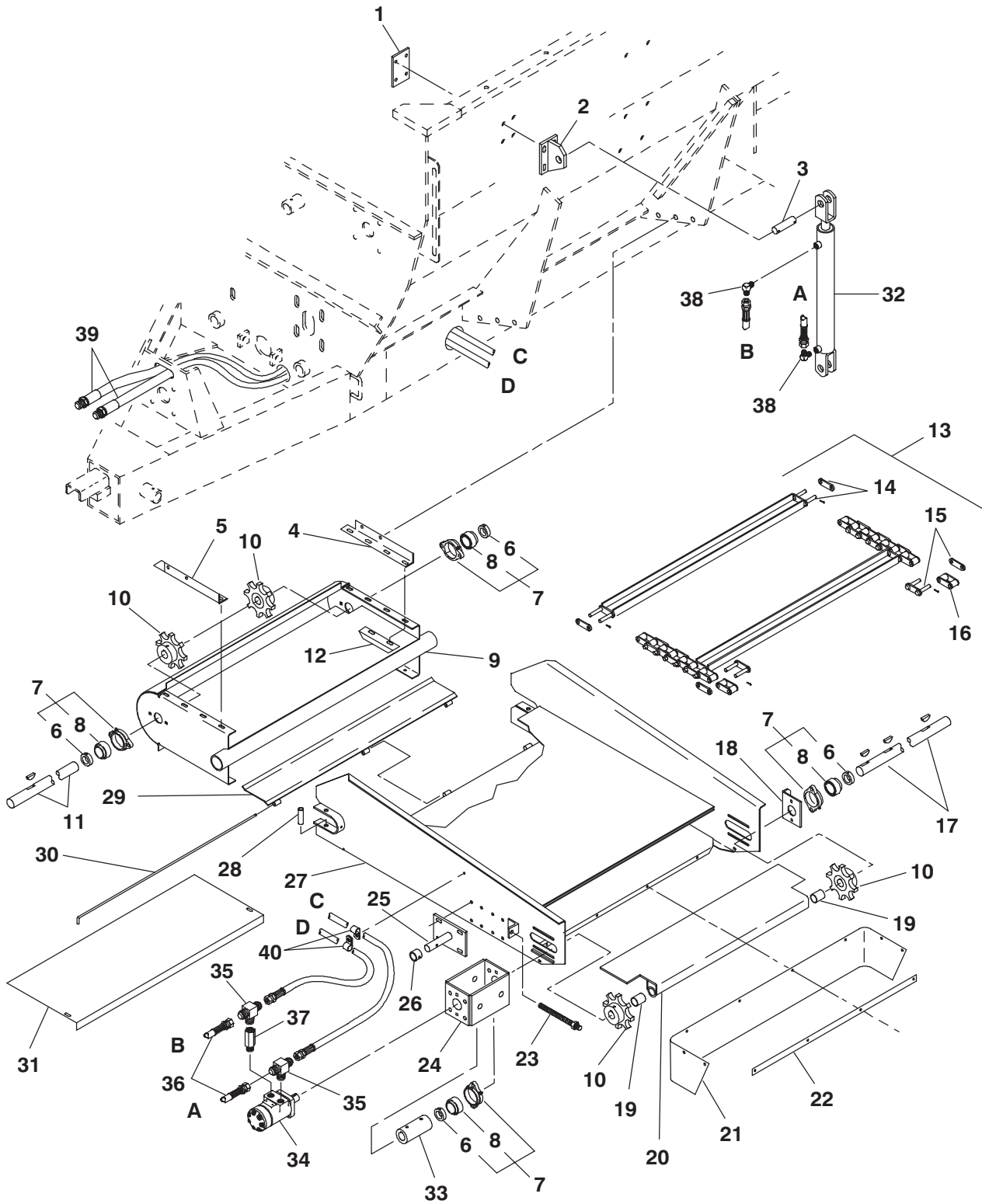


MF7435/7500 - ONE-PIECE DISCHARGE CONVEYOR

Ref. No.	Part No.	Description	Qty. Req.	Ref. No.	Part No.	Description	Qty. Req.
01	092602	STRAP/DEFLECTOR	1		650487	CS 5/16X1 (HN, LW, FW)	4
	650448	CS 1/4X3/4 (HN, LW)	4	14	092606	SHAFT/CONVEYOR	1
02	092603	DEFLECTOR/BELT	1	15	091886	LINK/HALF	AR
	650448	CS 1/4X3/4 (HN, LW, FW)	4	16	092779	LINK/STEEL W/PINS	AR
03	091892	BUSHING	2	17	092608	SLAT W/LINK & PINS	6
04	091893	SPROCKET/8T	4	18	092607	CONVEYOR/CHAIN ASSY	1
	650513	KEY/WOODRUFF 1/4X1	3	19	091908	COUPLER/SHAFT	1
05	092610	ADJ. FLOOR PLATE ASSY	1		650513	KEY/WOODRUFF 1/4X1	1
	570014	FITTING/GREASE	2		650201	SHSS 5/16X5/16	2
06	520084	COLLAR/LOCK	4	20	042057	COUPLER/PLAIN (EARLY STYLE)	1
07	091923	FLANGE/BEARING (INCL 6 & 8)	4	21	092619	MOUNT/HYDRAULIC MOTOR	1
	570009	FITTING/GREASE	4			(LATER STYLE)	1
	650533	CS 3/8X1-1/2 (HN, LW, 4FW)	8		092612	MOUNT/ORBITAL MOTOR	1
08	042903	BEARING/BALL	4			(EARLY STYLE)	1
09	092601	BEARING/ADJUSTMENT PLATE	2		650060	CS 3/8X1 (LW)	4
10	092600	ROD/THREADED (4HN 1/2)	2	22	065500 _a	MOTOR/HYDRAULIC	1
11	092611	SHAFT/UPPER CONVEYOR	1		650513	KEY/WOODRUFF 1/4X1	1
12	092605	CONVEYOR	1	23	660039	ELBOW/STREET	2
	650490	CS 3/8X1 (HN, LW, 2FW)	6	24	091901	VALVE/HYDRAULIC CHECK (1/2 DIA) ..	1
13	092604	DUMP PLATE/CONVEYOR	1	25	092613	HOSE/ASSY	2

a) For breakdown, see 'Hydraulic Motor & Cylinders' page.

MF7435/7500 - TWO-PIECE DISCHARGE CONVEYOR

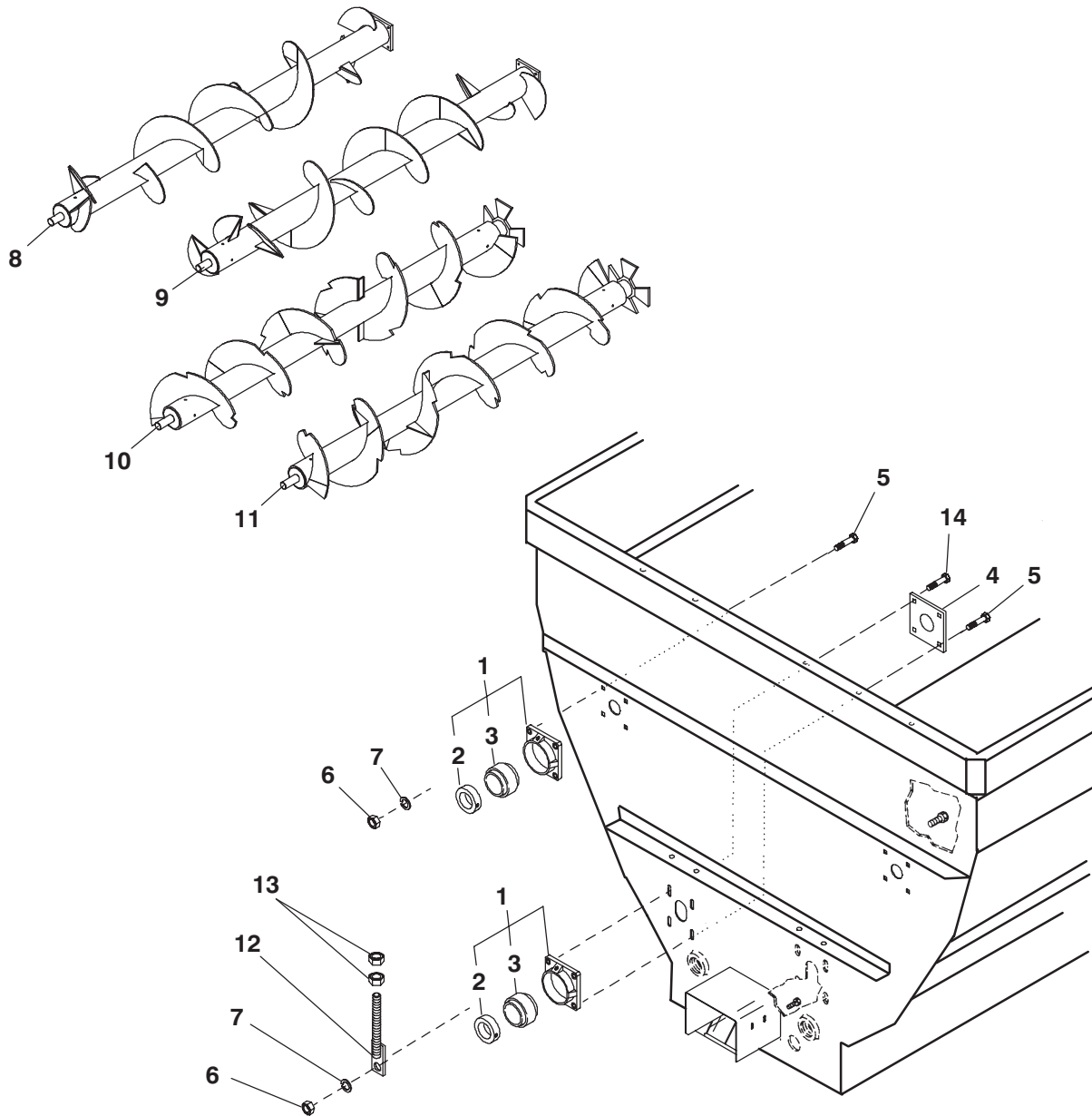


MF7435/7500 - TWO-PIECE DISCHARGE CONVEYOR

Ref. No.	Part No.	Description	Qty. Req.	Ref. No.	Part No.	Description	Qty. Req.
01	092626	BACKING PLATE CONV. CYL.	1	23	092600	ROD/THREADED	2
	071381	CS 3/8X1 FULL THD (HN, LW, FW) ...	4			4HN 1/2	
02	092621	BRACKET/CYLINDER LIFT	1	24	092619	MOUNT/MOTOR	1
03	092622	PIN/CYLINDER HINGE	1	25	092618	SUPPORT/CYLINDER	1
	655022	CP 3/16X1-3/4	2		650490	CS 3/8X1 (HN, LW, FW)	4
04	092628	MOUNT/CONVEYOR R.T	1	26	092627	RETAINER/CYLINDER	1
	650490	CS 3/8X1 (HN, LW)	2		650692	CS 5/16X1-3/4 (HN, LW)	1
05	092629	MOUNT/CONVEYOR LT.	1	27	092617	CONVEYOR/UPPER	1
	650490	CS 3/8X1 (HN, LW)	2		570014	FITTING/GREASE	2
06	520084	COLLAR/BEARING	4	28	092625	TUBE/PIVOT RETAINER	2
07	091923	FLANGE/BEARING ASSY	4		650594	CS 1/2X3-1/4 (LN)	2
	570009	FITTING/GREASE	4	29	092631	PLATE/PIVOT	1
	071381	CS 3/8X1 FULL THD (HN, LW)	4	30	092630	SHAFT/PIVOT	1
	650533	CS 3/8X1-1/2 (HN, LW, FW)	4		650551	CP 3/32X3/4	1
08	042903	BEARING	4	31	092624	PLATE/LOWER CONV. BOTTOM	1
09	092615	CONVEYOR/LOWER	1	32	091882 _a	CYLINDER/HYDRAULIC 2X16	1
	650060	CS 3/8X1 (HN, LW, 8 FW)	4	33	091908	COUPLER/SHAFT	1
10	091893	SPROCKET/8T	4		650513	KEY/WOODRUFF 1/4X1	1
	650513	KEY/WOODRUFF 1/4X1	3		650201	SHSS 5/16X5/16	2
11	092616	DRIVE SHAFT/LOWER CONV.	1	34	065500 _a	MOTOR/HYDRAULIC	1
12	092623	GUIDE/CHAIN	2		650513	KEY/WOODRUFF 1/4X1	1
	650533	CS 3/8X1-1/2 (HN, LW, 8FW)	4		650490	CS 3/8X1 (LW)	4
13	092634	CONVEYOR/CHAIN ASSY	1	35	067769	FITTING/TEE	2
14	092608	SLAT W/LINK & PINS	9	36	062404	HOSE/HYDRAULIC	2
15	092779	LINK/STEEL W/PINS	AR	37	067457	VALVE/HYDRAULIC CHECK	1
16	091886	LINK/HALF	AR	38	062405	ELBOW/MALE 1/2	2
17	092620	DRIVE SHAFT/UPPER	1	39	092633	HOSE/ASSY 195"	2
18	092601	BEARING/ADJUSTMENT PLATE	1	40	048967	CLAMP/INSULATED HOSE	2
19	091892	BUSHING	2		650426	CS 1/4X1-1/4 (HN, LW, 2FW)	1
20	092610	PLATE/ADJ. FLOOR ASSY	1				
21	092603	DEFLECTOR/BELT	1				
	650448	CS 1/4X3/4 (HN, LW, FW)	4				
22	092602	STRAP/DEFLECTOR	1				
	650448	CS 1/4X3/4 (HN, LW)	4				

a) For breakdown, see 'Hydraulic Motor & Cylinders' page.

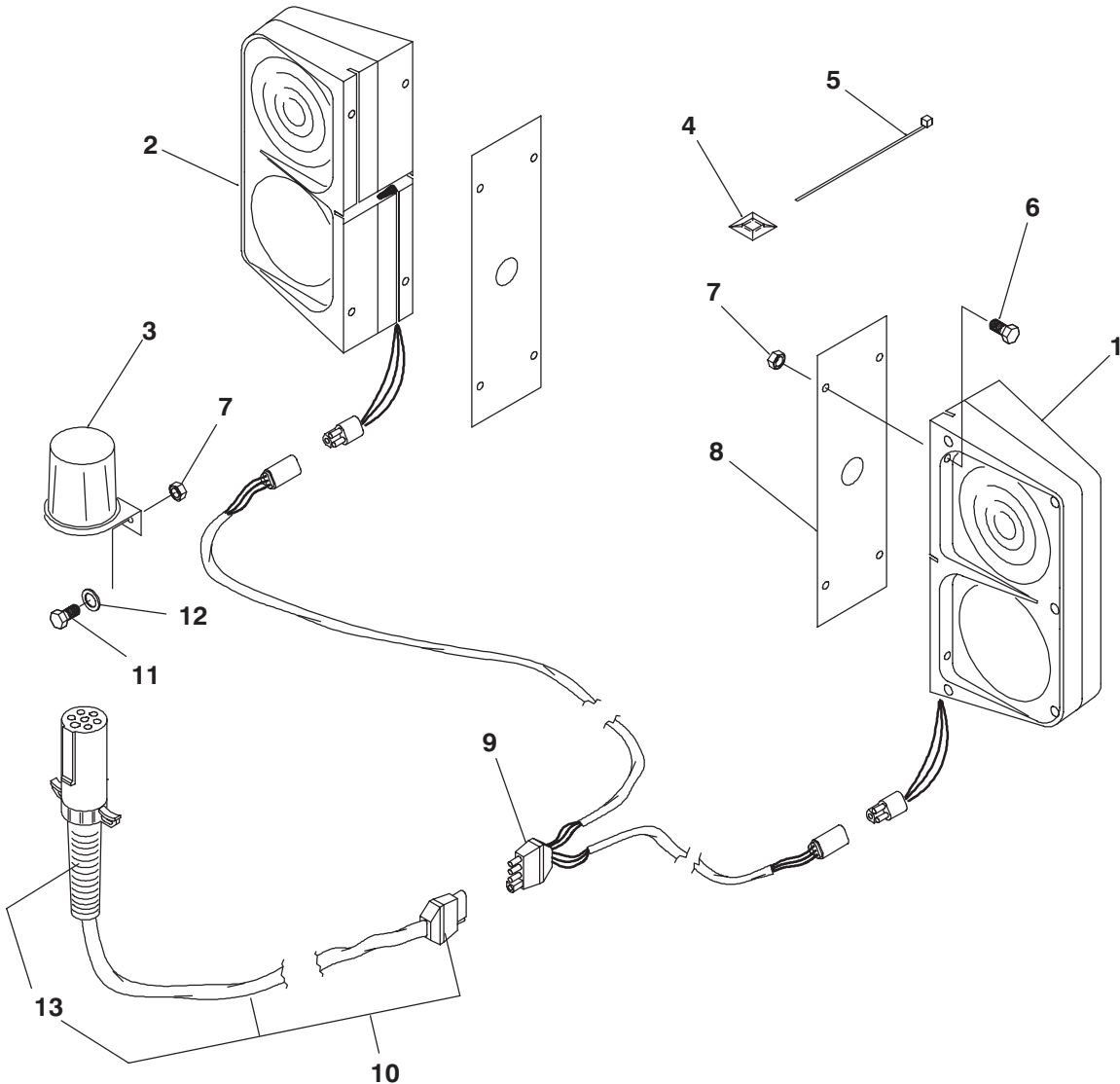
MF7435/7500 - AUGERS & FRONT BEARINGS



Ref. No.	Part No.	Description	Qty. Req.	Ref. No.	Part No.	Description	Qty. Req.
01	091913	FLANGE/BEARING	4	09	094319 _a	AUGER/TOP LT (7435)	1
02	089867	COLLAR/LOCK	4		094812 _a	AUGER/TOP LT (7500)	1
03	091914	BEARING/BALL	4	10	124793 _a	AUGER/BOTTOM RT (7435)	1
04	092640	BACKING PLATE/BEARING	2		124789 _a	AUGER/BOTTOM RT (7500)	1
05	650647	CS 5/8X2	12	11	124794 _a	AUGER/BOTTOM LT (7435)	1
06	653021	HN 5/8	16		124790 _a	AUGER/BOTTOM LT (7500)	1
07	654032	LW 5/8	16	12	092667	BRACKET/ADJUSTMENT ASSY	4
08	094318 _a	AUGER/TOP RT (7435)	1	13	653026	HN 3/4	8
	094811 _a	AUGER/TOP RT (7500)	1	14	650694	CS 5/8X2-1/2	4

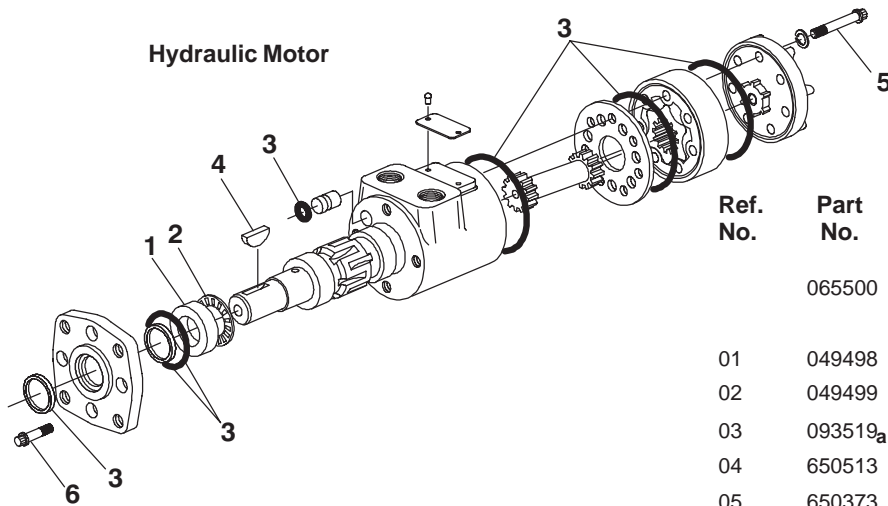
a) For breakdown, see 'Auger Components' pages.

MF7435/7500 - TRANSPORT LIGHTS



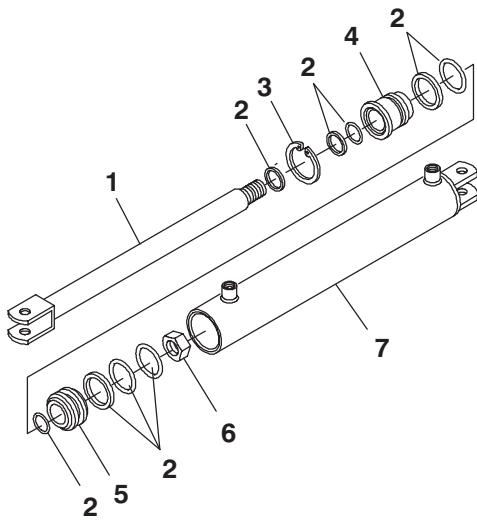
Ref. No.	Part No.	Description	Qty. Req.	Ref. No.	Part No.	Description	Qty. Req.
	142970	LIGHTS/TRANSPORT	1	07	071401	NILN 1/4	10
		CONSISTS OF:		08	112706	SUPPORT/LIGHT	2
01	112884	LIGHT/TRANSPORT LT	1	09	113253	HARNESS/"Y", 22' LT & 22' RT	1
02	112885	LIGHT/TRANSPORT RT	1	10	112888	HARNESS/PRIMARY	1
03	112886	HOLDER	1	11	650663	CS 1/4X5/8	2
04	125946	BASE/MOUNTING	8	12	650863	FW 1/4	2
05	055648	TIE/WIRE	8	13	650863	PLUG/7-PIN/W/CABLE PROTECTOR	1
06	650426	CS 1/4X1-1/4 (NILN)	8				

MF7435/7500 - HYDRAULIC MOTOR & CYLINDERS



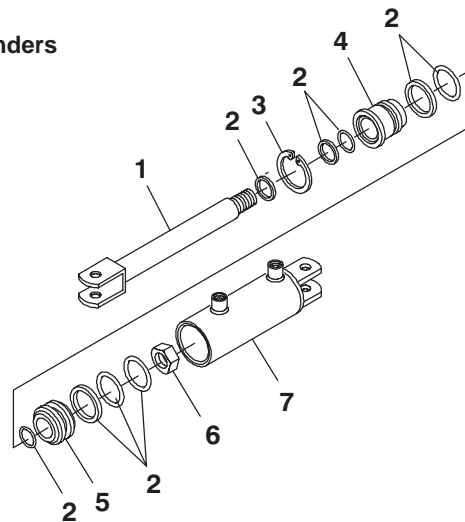
Ref. No.	Part No.	Description	Qty. Req.
	065500	MOTOR/HYDRAULIC	1
		CONSISTS OF:	
01	049498	RACE/BEARING	1
02	049499	WASHER/THRUST	1
03	093519 _a	KIT/SEAL	1
04	650513	KEY/WOODRUFF 1/4X1	1
05	650373	12-PT CS 5/16X1-3/4 NF	7
06	650927	12-PT CS 5/16X7/8 NF	4

a) The Seal Kit includes all required Seals, O-Rings, sealant and an instruction sheet.

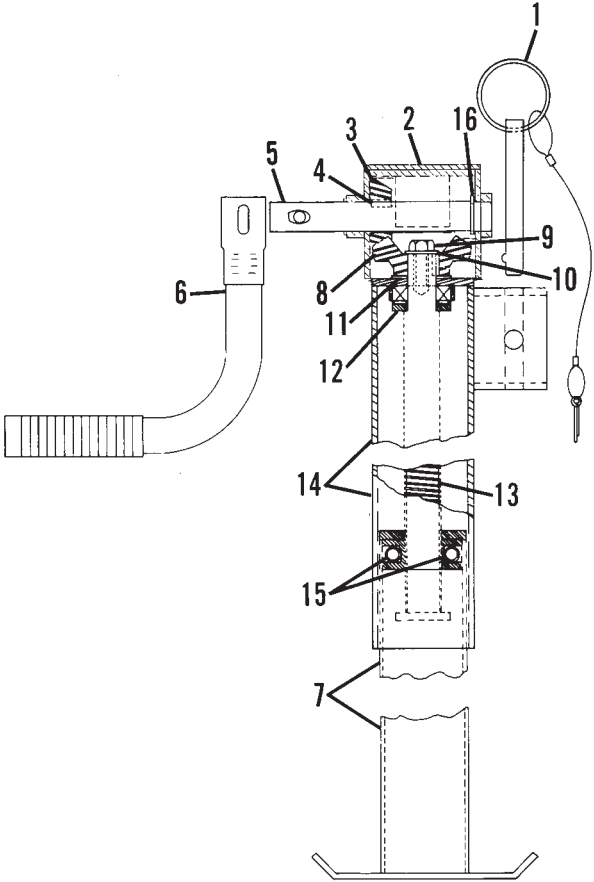


Ref. No.	Part No.	Description	Qty. Req.
	093759	CYLINDER/HYDRAULIC 2X20	1
		CONSISTS OF:	
01	094387	SHAFT WITH CLEVIS	1
02	094554	KIT/SEAL	1
03	089689	RING/SNAP	1
04	094553	HEAD/HYD CYL	1
05	094552	PISTON/HYD CYL	1
06	073788	NUT/LOCK	1
07	094386	BARREL W/PORTS	1

Hydraulic Cylinders

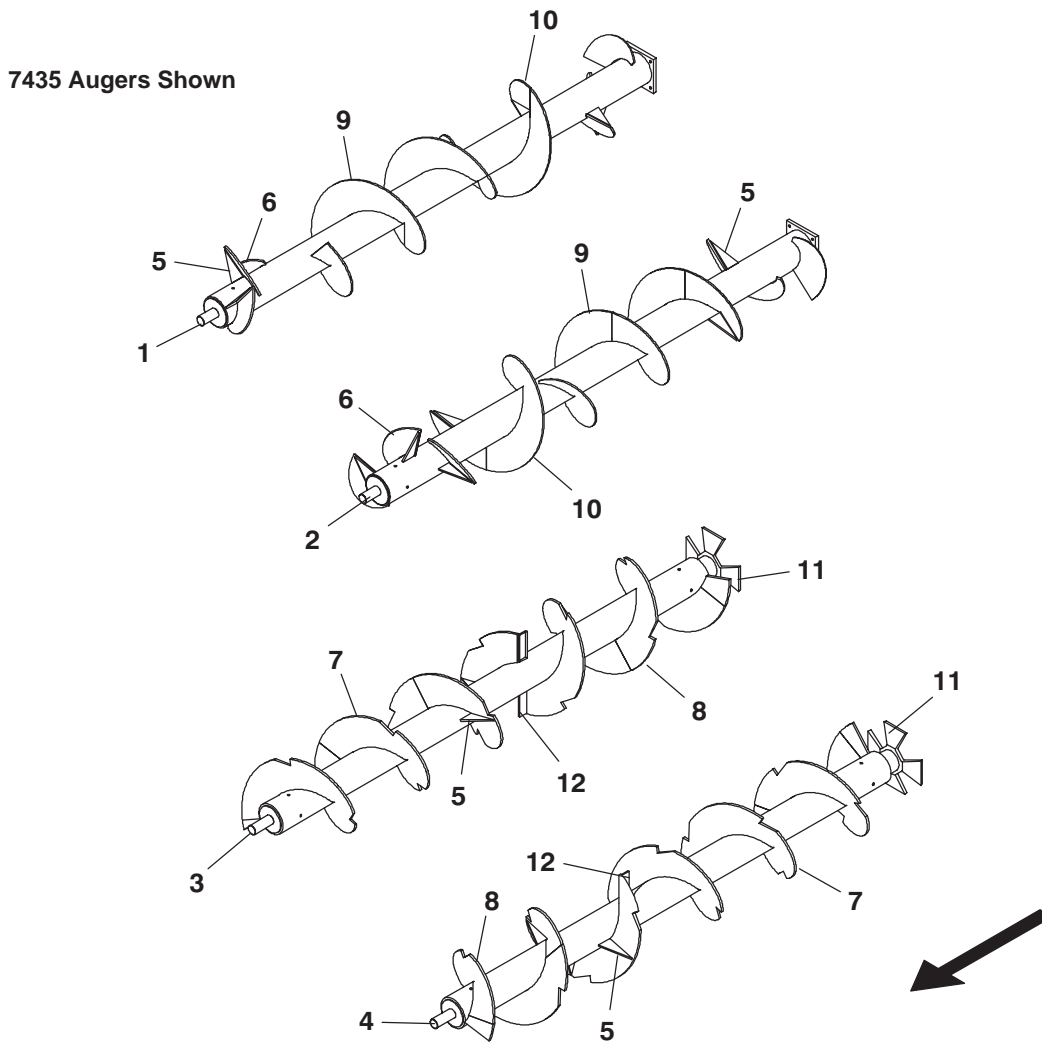


Ref. No.	Part No.	Description	Qty. Req.
	091882	CYLINDER/HYDRAULIC 2X16	1
		CONSISTS OF:	
01	094291	SHAFT & CLEVIS	1
02	089693	KIT/SEAL	1
03	089689	RING/SNAP	1
04	128372	HEAD/HYD CYL	1
05	089690	PISTON/HYD CYL	1
06	073788	NUT/LOCK	1
07	094290	BARREL/HYD CYLINDER	1



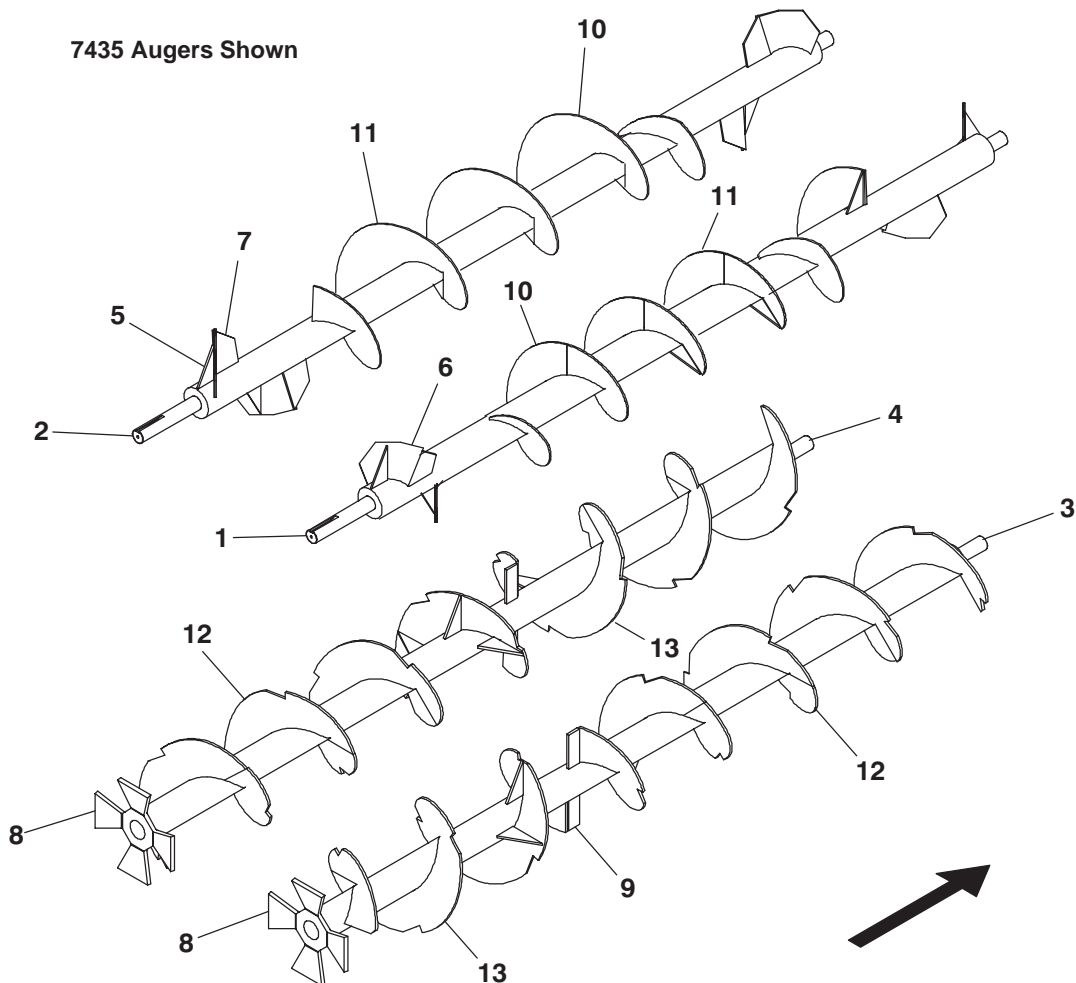
Ref. No.	Part No.	Description	Qty. Req.
	099241	JACK ASSY - 10000 LB	1
		CONSISTS OF:	
01	082650	PIN/BALL LOCK ASSY	1
02	082649	CAP/POLY	1
03	082660	GEAR/12T	1
04	082645	KEY/SQUARE 1/4X3/4	2
05	082659	SHAFT/PINION	1
06	110249	CRANK/ASSY W/GRIP	1
	650492	CS 3/8X2-1/2 (LN, 2FW)	1
07	110250	LEG W/PAD	1
08	082658	GEAR/18T	1
09	082657	SCREW/CAP LOCK	1
10	082656	WASHER/GEAR RETAINING	1
11	082644	WASHER/SPACER	1
12	082655	BEARING/THRUST	1
13	110251	SCREW/ASSY	1
14	110252	TUBE/OUTER	1
15	110253	PINS/RETAINING	2
16	110254	RING/SNAP	1

MF7435/7500 - AUGER COMPONENTS (AFTER SN4499 - 7435 & SN7499 - 7500)



Ref. No.	Part No.	Description	Qty. Req.	Ref. No.	Part No.	Description	Qty. Req.
01	094318 _a	AUGER/TOP RT (7435)	1	08	094312 _d	FLIGHT/NOTCHED 1/2 LT	AR
	094811 _b	AUGER/TOP RT (7500)	1	09	094314 _d	FLIGHT/SECT 3/8 RT	AR
02	094319 _a	AUGER/TOP LT (7435)	1	10	094313 _d	FLIGHT/SECT 3/8 LT	AR
	094812 _b	AUGER/TOP LT (7500)	1	11	094315	STAR/AUGER DRIVE	2
03	124793 _c	AUGER/BOTTOM RT (7435)	1	12	124703	PADDLE/UNLOADING	4
	124789 _c	AUGER/BOTTOM RT (7500)	1	a) The 7435 Top Augers each use a total of 4 of 094314, 3 of 094313, 8 of 124704 & 6 of 124802.			
04	124794 _c	AUGER/BOTTOM LT (7435)	1	b) The 7500 Top Augers each use a total of 5 of 094314, 4 of 094313, 8 of 124704 & 6 of 124802.			
	124790 _c	AUGER/BOTTOM LT (7500)	1	c) The 7435 & 7500 Bottom Augers each use a total 1 of 094315, 5 of 094311, 4 of 094312, 2 of 124703 and 6 of 124704.			
05	124704	SUPPORT/AUGER	28	d) The Flighting Section profile and length may have to be trimmed to be an exact replacement in the location being repaired. Use the old Flighting as a template.			
06	124802	ARM/TOP AUGER	12				
07	094311 _d	FLIGHT/NOTCHED 1/2 RT	AR				

MF7435/7500 - AUGER COMPONENTS (BEFORE SN4500 - 7435 & SN7500 - 7500)



Ref. No.	Part No.	Description	Qty. Req.	Ref. No.	Part No.	Description	Qty. Req.
01	099216 _a	AUGER/TOP RT (7435)	1	08	094315	STAR/AUGER DRIVE	2
	099204 _a	AUGER/TOP RT (7500)	1	09	099088	PADDLE/UNLOADING	4
02	099215 _a	AUGER/TOP LT (7435)	1	10	099086 _c	FLIGHT/SECT LT	AR
	099203 _a	AUGER/TOP LT (7500)	1	11	099087 _c	FLIGHT/SECT RT	AR
03	099218 _b	AUGER/BOTTOM RT (7435)	1	12	099089 _c	FLIGHT/NOTCHED RT	AR
	099206 _b	AUGER/BOTTOM RT (7500)	1	13	099090 _c	FLIGHT/NOTCHED LT	AR
04	099217 _b	AUGER/BOTTOM LT (7435)	1				
	099205 _b	AUGER/BOTTOM LT (7500)	1				
05	099085	SUPPORT/AUGER	20				
06	099083	PADDLE/AUGER	8				
07	099084	PADDLE/SUPPORT	8				

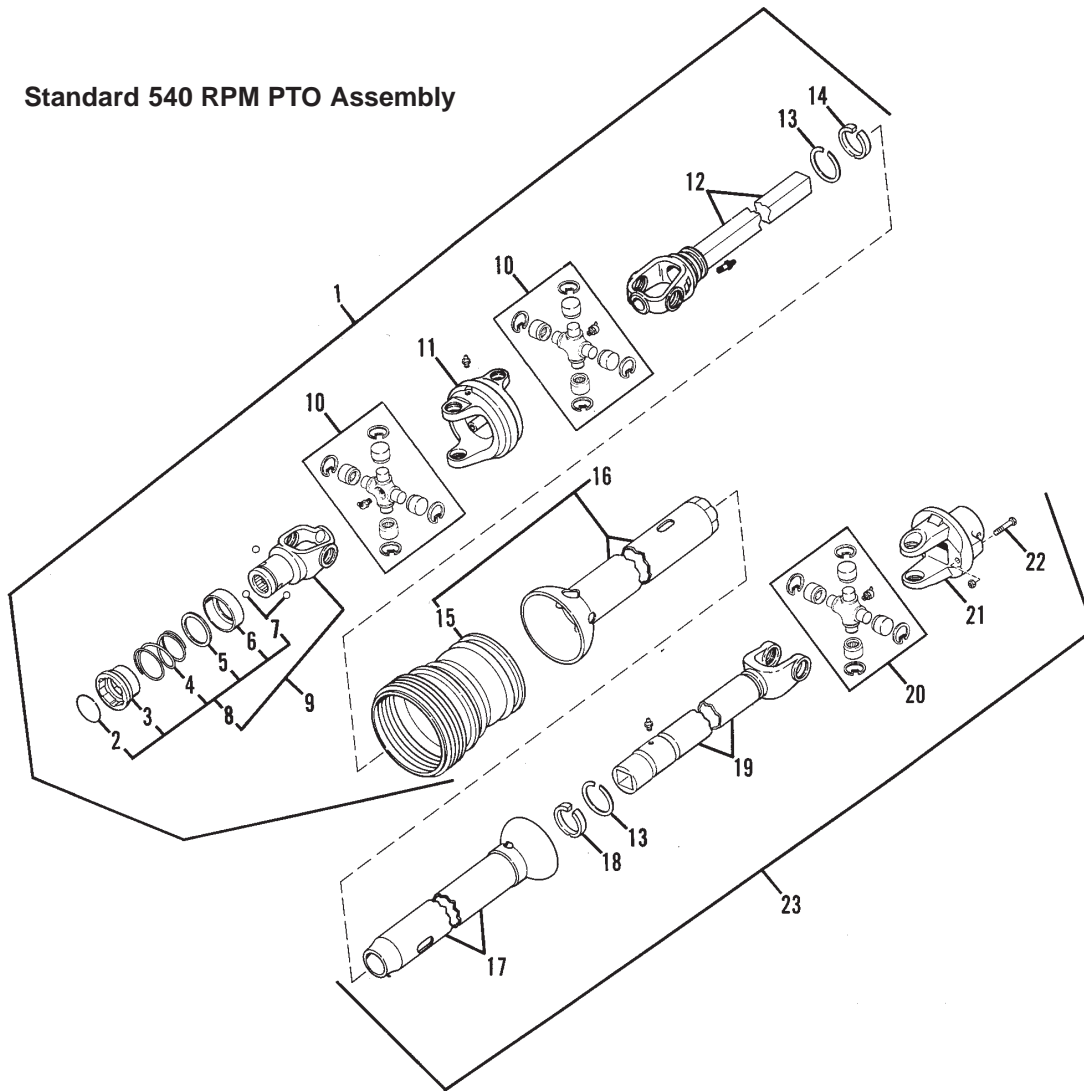
a) The 7435 & 7500 Top Augers each use a total of 4 of 099083, 4 of 099084, 4 of 099085 & (AR) of 099086 & 099087.

b) The 7435 & 7500 Bottom Augers each use a total of 6 of 099085, 2 of 099088, (AR) of 099089, (AR) of 099090 and 1 of 094315.

c) The Flighting Section profile and length may have to be trimmed to be an exact replacement in the location being repaired. Use the old Flighting as a template.

MF7435/7500 - UNIVERSAL DRIVES

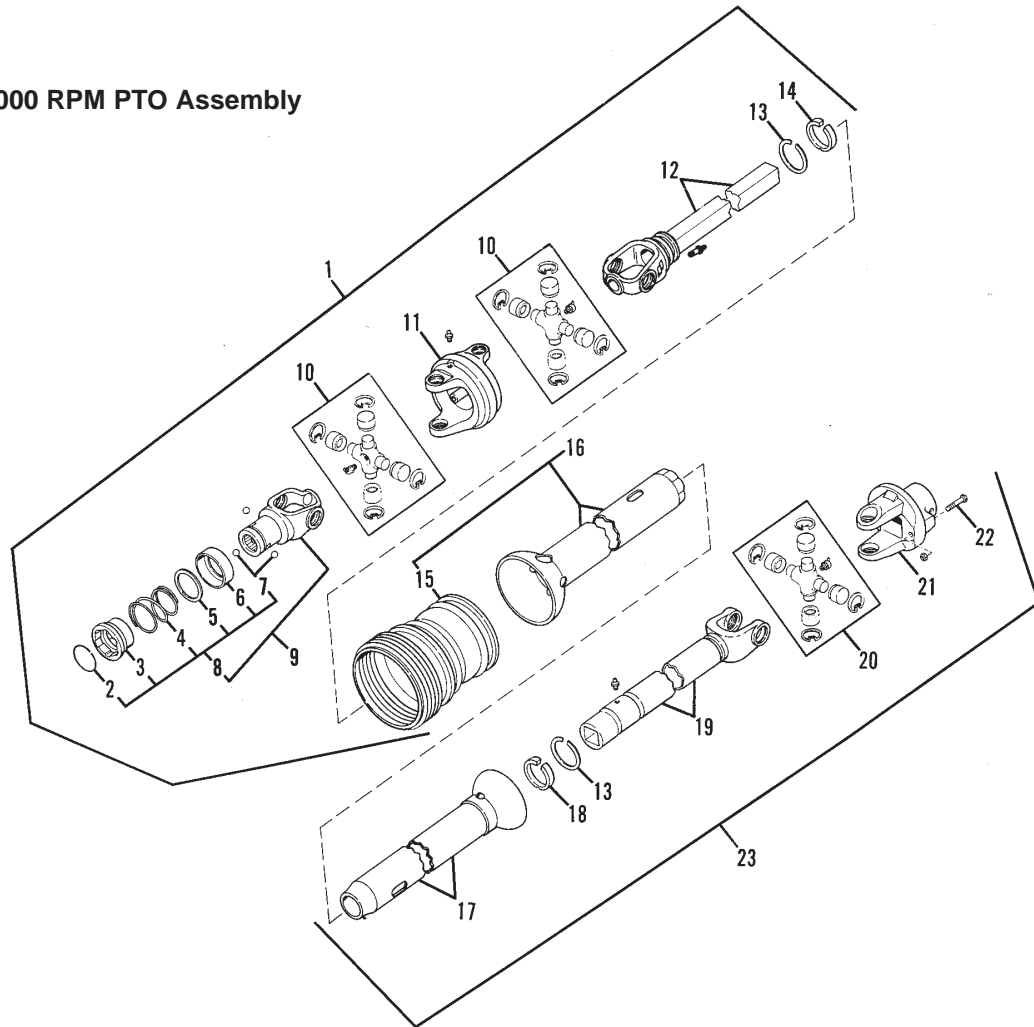
Standard 540 RPM PTO Assembly



Ref. No.	Part No.	Description	Qty. Req.	Ref. No.	Part No.	Description	Qty. Req.
01	084404	JOINT/UNIVERSAL TRACTOR	1	14	510023	BEARING/NYLON	1
	570009	FITTING/GREASE	1	15	091167	GUARD/PLASTIC	1
02	350-32485	RING/RETAINING	2	16	086936 _{ab}	GUARD/OUTER	1
03	086926	COLLAR/ASSD	2	17	092790 _a	GUARD/INNER	1
04	086927	SPRING	2	18	510202	BEARING/NYLON	1
05	086931	WASHER	2	19	092791 _c	JOINT/W/RECT TUBE & SLEEVE	1
06	086930	COVER	2		570014	FITTING/GREASE	1
07	086928	BALL/3/8 DIA.	6	20	045327	KIT/CENTER CROSS	1
08	086925	KIT/SPRING LOK REPAIR	2		570014	FITTING/GREASE	1
09	086938	YOKE/SPRING LOK ASSY	1	21	092789	YOKE/BALL SHEAR ASSY	1
10	086937	KIT/CROSS REPAIR	2	22	904413 _d	KIT/SHEAR BOLT	1
	570009	FITTING/GREASE	2	23	092778	PTO SHAFT/REAR HALF	1
11	090895	HOUSING/CV CENTER	1				
	570009	FITTING/GREASE	1				
12	086935	YOKE/ W/SHAFT ASSY	1				
13	510100	RETAINER/BEARING	2				

a) Includes One 510100 Bearing Retainer.
b) Includes One 091444 Danger Decal.
c) Includes 143007 Danger Decal.
d) Contains 8 Shear Bolts & Locknuts.

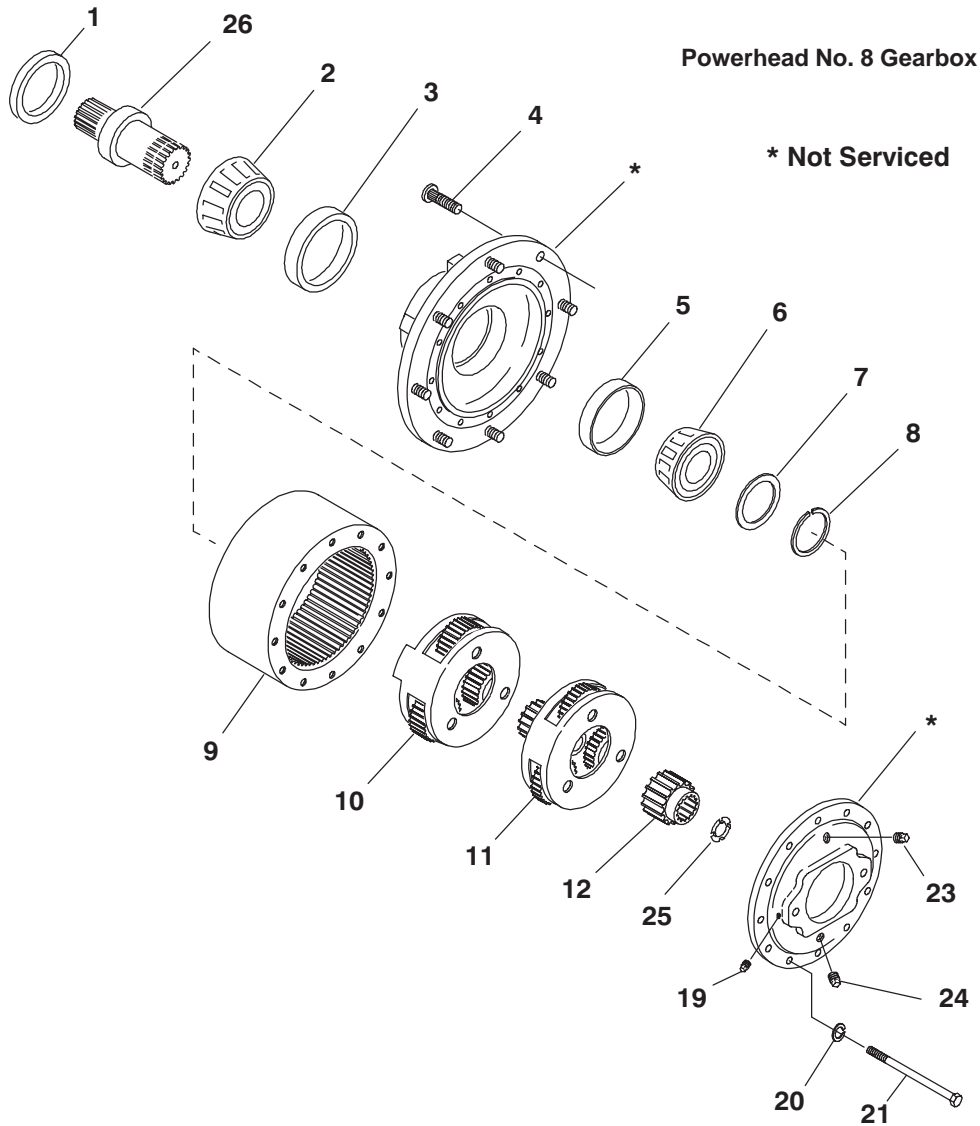
1000 RPM PTO Assembly



Ref. No.	Part No.	Description	Qty. Req.	Ref. No.	Part No.	Description	Qty. Req.
01	092782	PTO SHAFT FRONT HALF	1	14	510023	BEARING/NYLON	1
	570009	FITTING/GREASE	1	15	091167	GUARD/PLASTIC	1
02	350-32485	RING/RETAINING	1	16	086936 ^{ab}	GUARD/OUTER	1
03	086926	COLLAR/ASSD	1	17	092790 ^a	GUARD/INNER	1
04	086927	SPRING	1	18	510202	BEARING/NYLON	1
05	086931	WASHER	1	19	092791 ^c	JOINT/W/RECT. TUBE & SLEEVE	1
06	086930	COVER	1		570014	FITTING/GREASE	1
07	086928	BALL/3/8 DIA.	3	20	045327	KIT/CENTER CROSS	1
08	086925	KIT/SPRING LOK REPAIR	1		570014	FITTING/GREASE	1
09	092792	SLIDE LOK YOKE ASS'Y	1	21	092789	YOKE/BALL SHEAR ASSY	1
10	086937	KIT/CROSS REPAIR	2	22	080453 ^d	KIT/SHEAR BOLT	1
	570009	FITTING/GREASE	2	23	092783	PTO SHAFT/REAR HALF	1
11	090895	HOUSING/CV CENTER	1				
	570009	FITTING/GREASE	1				
12	086935	YOKE W/SHAFT ASSY	1				
13	510100	RETAINER/BEARING	2				

a) Includes (1) 510100 Bearing Retainer.
 b) Includes One 091444 Danger Decal.
 c) Includes 143007 Danger Decal.
 d) Contains 8 Shear Bolts & 8 Locknuts.

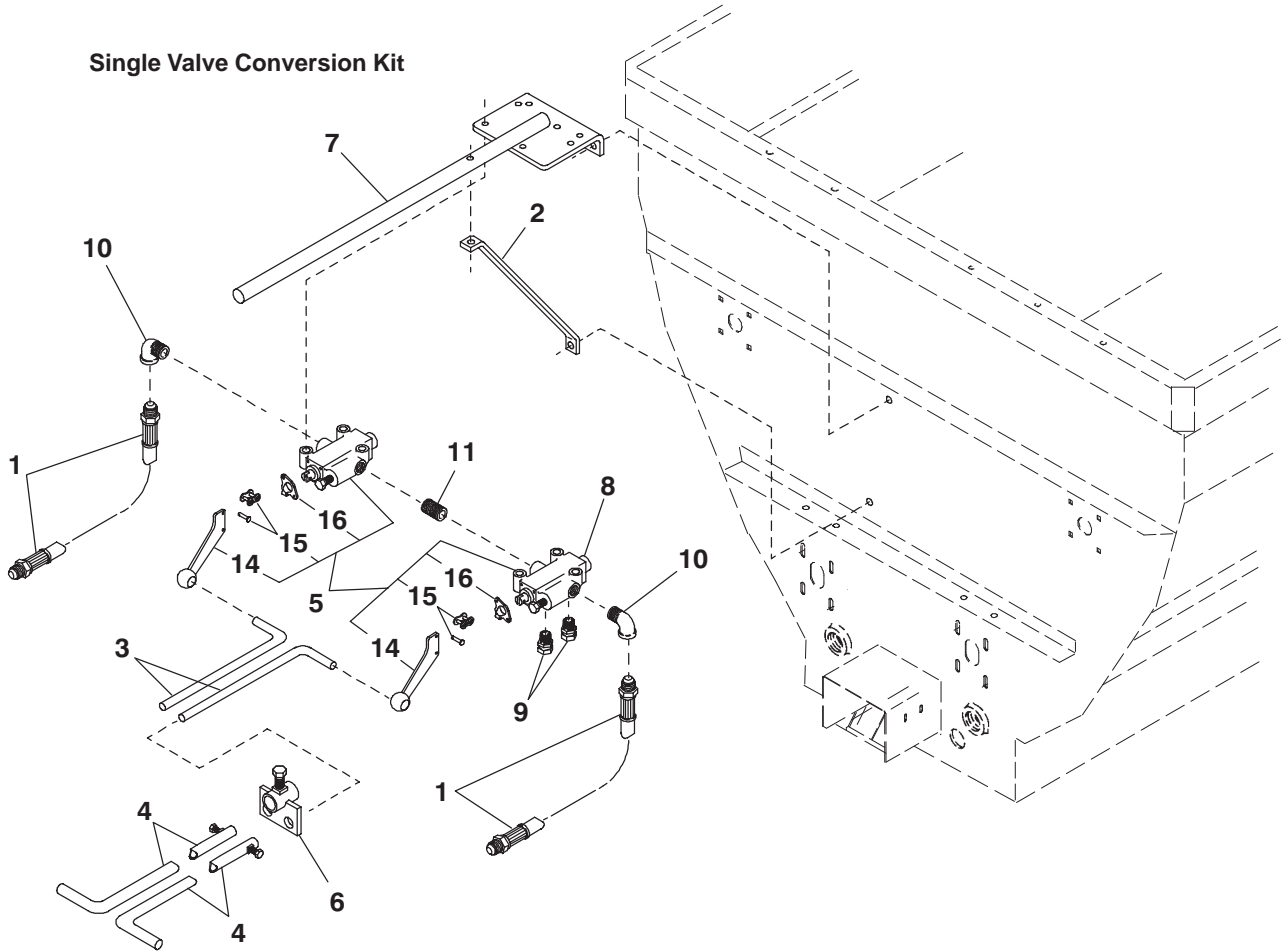
MF7435/7500 - GEARBOX, POWERHEAD NO. 8



Ref. No.	Part No.	Description	Qty. Req.	Ref. No.	Part No.	Description	Qty. Req.
	092742	GEARBOX/POWERHEAD NO. 8	1	11	092936	CARRIER/PRIMARY ASSY	1
		CONSISTS OF:		12	092935	GEAR/SUN	1
01	094376	SEAL/OIL	1	19	660000	PLUG/PIPE 1/8 SQ HD	2
02	119225	BEARING/CONE	1	20	089991	FW 3/8	12
03	119224	BEARING/CUP	1	21	650605	CS 3/8X5-1/2	12
04	041879	BOLT/WHEEL	8	22	120796	SEAL/OIL	1
05	119226	BEARING/CUP	1	23	660004	PLUG/PIPE 1/2	1
06	119227	BEARING/CONE	1	24	057569	PLUG/MAGNETIC PIPE	1
07	110489	WASHER/THRUST	1	25	080303	WASHER/THRUST	1
08	092938 _a	KIT/THRUST WASHER RET	1	26	119804	SHAFT/OUTPUT	1
09	092934	GEAR/RING	1				
10	092937	CARRIER/SECONDARY ASSY	1				

a) Select the widest Snap Ring that matches groove in Shaft.

Single Valve Conversion Kit



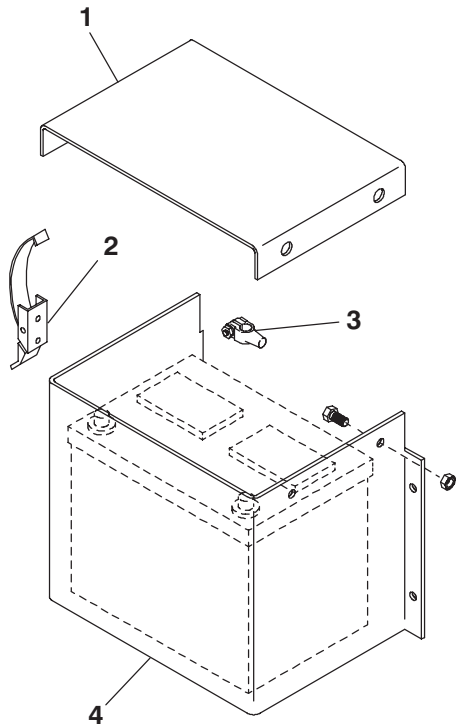
Ref. No.	Part No.	Description	Qty. Req.	Ref. No.	Part No.	Description	Qty. Req.
	804570	SINGLE VALVE CONVERSION	1	08	092703 _a	KIT/DETENT MANUAL VALVE	1
		CONSISTS OF:			650579	CS 3/8X1-3/4 (HN, LW, FW)	3
01	067848	HOSE/ASSY (96" LONG)	2	09	580058	UNION/HYD FITTING	2
02	092323	BRACE/INDICATOR	1	10	660014	ELBOW/PIPE REDUCING	2
	650528	CS 3/8X2 (HN, LW)	1	11	660058	NIPPLE/CLOSE 3/4 NPT	1
03	092700	HANDLE/VALVE	2	12	091442 _b	DECAL/DANGER ROTATING AUGER	1
	655006	CP 1/8X1	2	13	093653 _b	DECAL/WARNING ROT DR LN	1
04	092701	HANDLE/CONSOLE	2	14	119817	HANDLE	2
05	092702	VALVE/HYDRAULIC	2	15	119818	KIT/PIN	2
	650579	CS 3/8X1-3/4 (HN, LW, FW)	3	16	119819	BRACKET/HANDLE	2
06	092704	HANGER	1				
	650485	CS 5/16X5/8	1				
07	092705	MOUNT/VALVE	1				
	650490	CS 3/8X1 (HN, LW)	3				

a) Used only on indicated valve.

b) Included with the Kit but NOT shown; refer to

Decal Locations information for proper location.

MF7435/7500 - ACCESSORIES

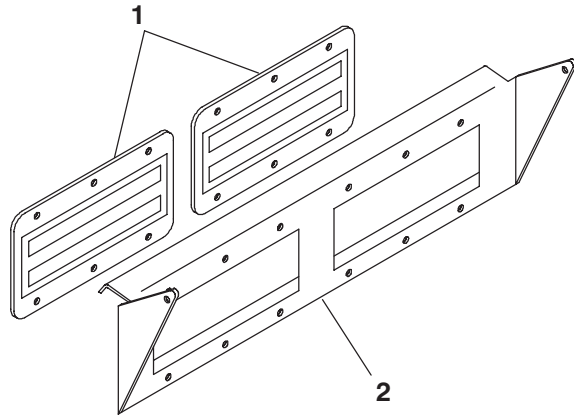


Battery Box

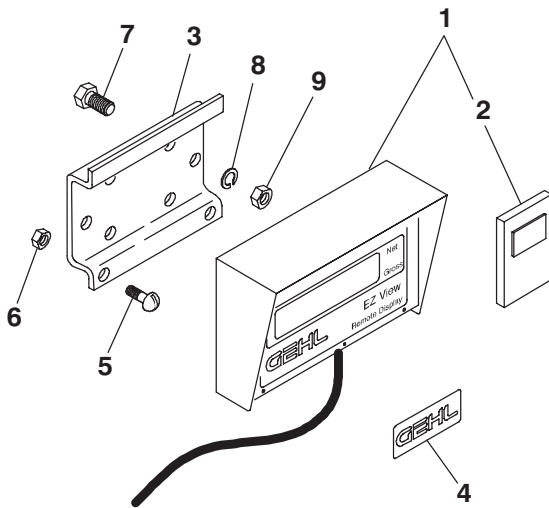
Ref. No.	Part No.	Description	Qty. Req.
	804569	BATTERY BOX	1
		CONSISTS OF:	
01	092707	COVER/BATTERY BOX	1
	650487	CS 5/16X1 (LN)	2
02	092708	LATCH/OVER CENTER	1
	650387	RHMS #10-32X1/2 (HN, LW)	2
03	068244	CLAMP/BATTERY	2
04	092706	BOX/BATTERY	1
	650490	CS 3/8X1 (HN, LW)	4

Magnet Assembly

Ref. No.	Part No.	Description	Qty. Req.
	804568	MAGNET ASSY	1
		CONSISTS OF:	
01	092693	MAGNET - CONVEYOR	2
	650945	RHMS 1/4X3/4 (HN, LW)	12
02	092692	MAGNET PLATE	1
	650490	CS 3/8X1 (LN, 2FW)	2



**Remote Scale Indicator
(Requires Model 3200 Scale)**

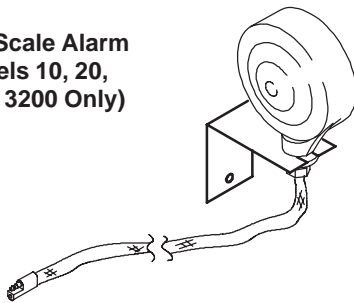


Ref. No.	Part No.	Description	Qty. Req.
	806326	REMOTE INDICATOR T/R KIT	1
		CONSISTS OF:	
01	118241	REMOTE INDICATOR T/R	1
02	092988	TRANSMITTER/WIRELESS	1
03	092684	BRACKET/INDICATOR	1
04	118242	DECAL/GEHL	1
05	650815	RHMS#1024-3/4	2
06	650550	HN #1024	2

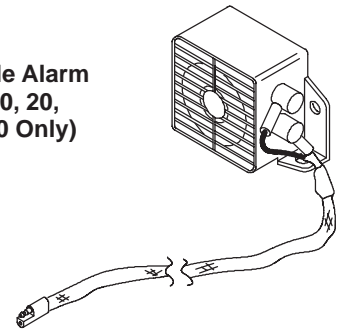
Customer Supplied Hardware

07	650490	CS 3/8X1	4
08	654026	LW 3/8	4
09	653010	HN 3/8	4

**Visual Scale Alarm
(Models 10, 20,
2100 & 3200 Only)**



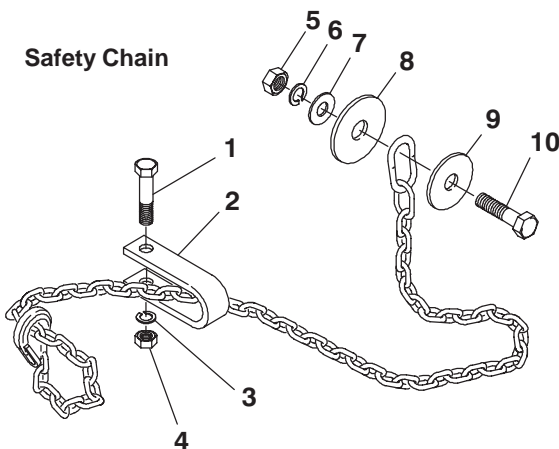
**Audible Scale Alarm
(Models 10, 20,
2100 & 3200 Only)**



Ref. No.	Part No.	Description	Qty. Req.
	804778	VISUAL SCALE ALARM	1

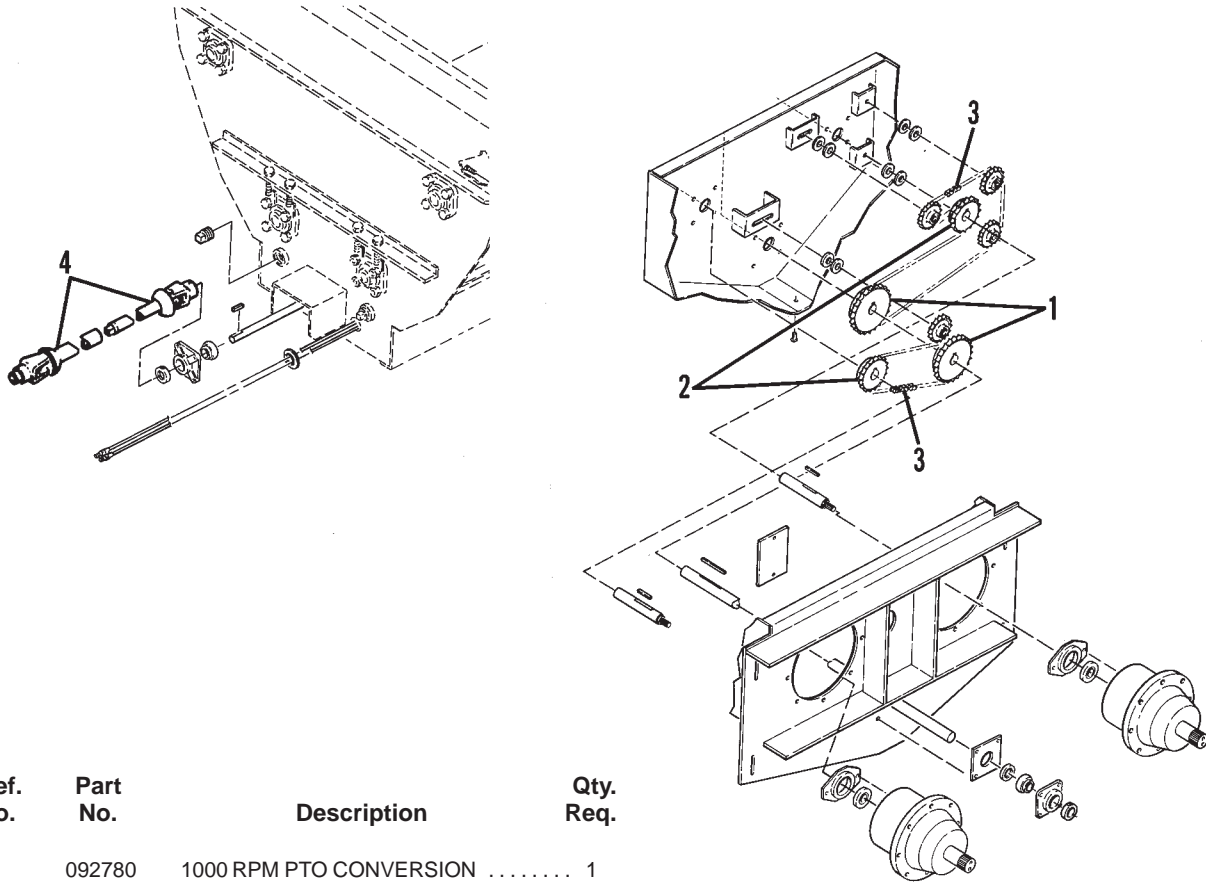
Ref. No.	Part No.	Description	Qty. Req.
	804777	AUDIBLE SCALE ALARM	1

Safety Chain



Ref. No.	Part No.	Description	Qty. Req.
	142967	CHAIN/SAFETY TOW 15 TON	1
		CONSISTS OF:	
01	650695	CS 5/8X3-1/2	1
02	080894	CLEVIS	1
03	654032	LW 5/8	1
04	653021	HN 5/8	1
05	653026	HN 3/4	1
06	654034	LW 3/4	1
07	654014	FW 3/4	1
08	043912	FW 1-1/32 SPECIAL	1
09	069076	FW 25/32	1
10	650172	CS 3/4X3-1/4	1

1000 RPM PTO Conversion



Ref. No.	Part No.	Description	Qty. Req.
	092780	1000 RPM PTO CONVERSION	1
		CONSISTS OF:	
01	092695	SPROCKET/21T	2
	650214	SHSS-CP 3/8X1/2	2
02	092696	SPROCKET/30T	2
	650214	SHSS-CP 3/8X1/2	2
03	500161	LINK/OFFSET (#60) CHAIN	1
04	092781 _a	SHAFT/PTO	1

a) Not available as a service part. For breakdown see page entitled, 'Universal Drives'.

Index

A

Accessories
 1000 RPM Conversion Kit, 30
 Battery Box, 28
 Magnet Assembly, 28
 Remote Scale Indicator Kit, 29
 Safety Chain, 29
 Scale Alarm
 Audible, 29
 Visual, 29
 Single Valve Conversion Kit, 27
Auger, 18
 Bearings, 18
 Components, 22–24
Axles, 12–13

C

Chaincase, 10–11

D

Decal Application, 2
Decal Locations, 2–5
Discharge Conveyor
 One-Piece, 14–15
 Two-Piece, 16–17
Discharge Gate, 6–7

G

Gearbox, Model 8, 26

H

Hitchjack, 6–7, 21
Hydraulic Cylinders, 20
Hydraulic Motor, 20
Hydraulics, 6–7

P

Paint Notice, 2
PTO, 6–7

R

Rear Drive & Guard, 8–9

S

Scale, 12–13

T

Transport Lights, 19

U

Universal Drives, 24–25

W

Weighbars, 12–13
Wheels, 6–7

MF7435/7500 - NUMERICAL INDEX

Part No.	Page No.	Ref. No.	Part No.	Page No.	Ref. No.	Part No.	Page No.	Ref. No.	Part No.	Page No.	Ref. No.
H6098A	07	06	082645	21	04	091446	02	09	092608	17	14
B11433A	09	13	082649	21	02	091447	02	10	092610	15	05
R13062	11	05	082650	21	01	091448	02	11	092610	17	20
009476	11	20	082655	21	12	091727	02	12	092611	15	11
041879	26	04	082656	21	10	091880	11	16	092612	15	21
042057	15	20	082657	21	09	091881	11	15	092613	15	25
042903	15	08	082658	21	08	091882	07	29	092615	17	09
042903	17	08	082659	21	05	091882	17	32	092616	17	11
043912	29	08	082660	21	03	091882	20	00	092617	17	27
045327	24	20	083666	07	05	091884	11	10	092618	17	25
045327	25	20	083666	11	09	091886	15	15	092619	15	21
048967	17	40	084404	07	01	091886	17	16	092619	17	24
049498	20	01	084404	24	01	091889	07	34	092620	17	17
049499	20	02	086925	24	08	091890	11	19	092621	17	02
055342	13	16	086925	25	08	091891	07	13	092622	17	03
055648	19	05	086926	24	03	091892	15	03	092623	17	12
056845	11	18	086926	25	03	091892	17	19	092624	17	31
057569	26	24	086927	24	04	091893	15	04	092625	17	28
057650	07	30	086927	25	04	091893	17	10	092626	17	01
057653	07	33	086928	24	07	091894	07	31	092627	17	26
058212	11	17	086928	25	07	091896	07	11	092628	17	04
062404	17	36	086930	24	06	091899	11	03	092629	17	05
062405	17	38	086930	25	06	091901	15	24	092630	17	30
062889	07	35	086931	24	05	091907	07	10	092631	17	29
065500	15	22	086931	25	05	091908	15	19	092633	17	39
065500	17	34	086935	24	12	091908	17	33	092634	17	13
065500	20	00	086935	25	12	091912	07	04	092640	18	04
067457	17	37	086936	24	16	091912	11	08	092642	07	26
067493	02	01	086936	25	16	091913	18	01	092643	09	14
067769	17	35	086937	24	10	091914	18	03	092658	11	25
067848	27	01	086937	25	10	091915	09	03	092665	11	02
067926	02	02	086938	24	09	091923	15	07	092666	07	20
068244	28	03	089689	20	03	091923	17	07	092667	09	23
069066	09	01	089689	20	03	092282	02	13	092667	18	12
069076	29	09	089690	20	05	092323	27	02	092673	07	18
069387	11	06	089693	20	02	092600	15	10	092675	13	10
071401	19	07	089867	18	02	092600	17	23	092679	13	09
073788	20	06	089991	26	20	092601	15	09	092681	09	15
073788	20	06	090895	24	11	092601	17	18	092684	13	04
076082	07	03	090895	25	11	092602	15	01	092684	29	03
076082	11	07	091167	24	15	092602	17	22	092692	28	02
076102	13	06	091167	25	15	092603	15	02	092693	28	01
080124	02	26	091398	02	24	092603	17	21	092695	30	01
080247	02	05	091399	02	24	092604	15	13	092696	30	02
080303	26	25	091438	02	06	092605	15	12	092700	27	03
080453	25	22	091442	02	07	092606	15	14	092701	27	04
080894	29	02	091442	27	12	092607	15	18	092702	27	05
082644	21	11	091444	02	08	092608	15	17	092703	27	08

MF7435/7500 - NUMERICAL INDEX

Part No.	Page No.	Ref. No.	Part No.	Page No.	Ref. No.	Part No.	Page No.	Ref. No.	Part No.	Page No.	Ref. No.
092704	27	06	092938	26	08	099083	23	06	110197	11	29
092705	27	07	092987	13	03	099084	23	07	110198	07	42
092706	28	04	092988	13	13	099085	23	05	110199	07	43
092707	28	01	092988	29	02	099086	23	10	110200	07	44
092708	28	02	093020	02	14	099087	23	11	110201	09	24
092723	09	04	093030	13	02	099088	23	09	110249	21	06
092724	09	02	093367	02	15	099089	23	12	110250	21	07
092725	09	06	093369	02	16	099090	23	13	110251	21	13
092725	11	28	093373	02	17	099200	13	03	110252	21	14
092726	09	18	093457	02	18	099201	07	27	110253	21	15
092727	09	07	093465	02	19	099202	07	16	110254	21	16
092728	07	21	093466	02	19	099203	23	02	110489	26	07
092730	07	28	093489	02	20	099204	23	01	111358	07	49
092733	11	24	093519	20	03	099205	23	04	111359	07	50
092734	11	23	093653	02	21	099206	23	03	112184	07	57
092735	11	11	093653	27	13	099208	07	08	112185	07	62
092739	11	22	093759	07	29	099210	13	05	112186	07	58
092740	11	01	093759	20	00	099211	07	25	112187	07	54
092741	11	12	093967	02	22	099212	07	27	112188	07	56
092742	11	27	094232	07	25	099213	07	16	112189	07	55
092742	26	00	094290	20	07	099214	07	17	112190	07	59
092744	09	16	094291	20	01	099215	23	02	112191	07	60
092752	09	11	094311	22	07	099216	23	01	112192	07	52
092754	09	10	094312	22	08	099217	23	04	112193	07	51
092755	09	09	094313	22	10	099218	23	03	112195	07	61
092778	07	02	094314	22	09	099220	07	24	112518	13	03
092778	24	23	094315	22	11	099221	07	22	112519	13	03
092779	15	16	094315	23	08	099222	07	40	112520	13	03
092779	17	15	094318	18	08	099223	07	39	112706	19	08
092780	30	00	094318	22	01	099224	07	37	112710	02	25
092781	30	04	094319	18	09	099225	07	38	112884	19	01
092782	25	01	094319	22	02	099226	07	41	112885	19	02
092783	25	23	094376	26	01	099227	07	46	112886	19	03
092789	24	21	094386	20	07	099228	07	45	112888	19	10
092789	25	21	094387	20	01	099229	07	48	113109	07	32
092790	24	17	094472	07	31	099230	07	23	113253	19	09
092790	25	17	094552	20	05	099232	09	21	118241	13	11
092791	24	19	094553	20	04	099233	09	22	118241	29	01
092791	25	19	094554	20	02	099234	07	08	118242	29	04
092792	25	09	094803	07	24	099236	09	08	119224	26	03
092795	13	11	094811	18	08	099238	13	08	119225	26	02
092796	13	12	094811	22	01	099239	07	19	119226	26	05
092797	13	14	094812	18	09	099240	09	17	119227	26	06
092798	13	15	094812	22	02	099241	07	36	119738	07	15
092934	26	09	094926	11	21	099241	21	00	119804	26	26
092935	26	12	094963	02	23	099242	09	12	119817	27	14
092936	26	11	095038	02	24	099243	09	19	119818	27	15
092937	26	10	095043	02	24	099244	09	20	119819	27	16






MF7435/7500 - NUMERICAL INDEX

Part No.	Page No.	Ref. No.	Part No.	Page No.	Ref. No.	Part No.	Page No.	Ref. No.	Part No.	Page No.	Ref. No.
120796	26	22	145234	02	28	650490	29	07	654032	18	07
122617	02	26	500161	30	03	650513	20	04	654032	29	03
122736	02	27	510023	24	14	650550	29	06	654034	29	06
124703	22	12	510023	25	14	650605	26	21	655046	07	53
124704	22	05	510100	24	13	650647	18	05	660000	26	19
124789	18	10	510100	25	13	650663	19	11	660004	11	13
124789	22	03	510202	24	18	650694	18	14	660004	26	23
124790	18	11	510202	25	18	650695	29	01	660007	07	07
124790	22	04	520084	15	06	650815	29	05	660014	27	10
124793	18	10	520084	17	06	650863	19	12	660039	15	23
124793	22	03	520153	11	04	650863	19	13	660058	27	11
124794	18	11	520194	07	14	650927	20	06	804568	28	00
124794	22	04	520195	07	12	653010	29	09	804569	28	00
124802	22	06	520208	11	26	653021	18	06	804570	27	00
124975	09	05	570006	07	09	653021	29	04	804777	29	00
125946	19	04	580058	27	09	653026	18	13	804778	29	00
128372	20	04	600798	13	01	653026	29	05	806326	29	00
142496	07	47	604494	13	07	654012	11	14	904413	24	22
142967	29	00	650172	29	10	654014	29	07	350-32485	24	02
142970	19	00	650373	20	05	654026	29	08	350-32485	25	02
143007	02	29	650426	19	06						

TORQUE SPECIFICATIONS

NOTE: Use these torque values when tightening **GEHL** hardware (excluding: Locknuts and Self-tapping, Thread Forming and Sheet Metal Screws) unless specified otherwise.

All torque values are in Lb-Ft except those marked with an * which are Lb-In
(For metric torque value Nm, multiply Lb-Ft value by 1.355 or Lb-In value by 0.113)

Unified National Thread	Grade 2 		Grade 5 		Grade 8 	
	Dry	Lubed	Dry	Lubed	Dry	Lubed
8-32	19*	14*	30*	22*	41*	31*
8-36	20*	15*	31*	23*	43*	32*
10-24	27*	21*	43*	32*	60*	45*
10-32	31*	23*	49*	36*	68*	51*
1/4-20	66*	50*	9	75*	12	9
1/4-28	76*	56*	10	86*	14	10
5/16-18	11	9	17	13	25	18
5/16-24	12		19	14		20
3/8-16	20	15	30	23	45	35
3/8-24	23	17	35	25	50	
7/16-14	32	24	50	35	70	55
7/16-20	36	27	55	40	80	60
1/2-13	50	35	75	55	110	80
1/2-20	55	40	90	65	120	90
9/16-12	70	55	110	80	150	110
9/16-18	80	60	120	90	170	130
5/8-11	100	75	150	110	220	170
5/8-18	110	85	180	130	240	180
3/4-10	175	130	260	200	380	280
3/4-16	200	150	300	220	420	320
7/8-9	170	125	430	320	600	460
7/8-14	180	140	470	360	660	500
1-8	250	190	640	480	900	680
1-14	270	210	710	530	1000	740
Metric Course Thread	Grade 8.8 		Grade 10.9 		Grade 12.9 	
	Dry	Lubed	Dry	Lubed	Dry	Lubed
M6-1	8	6	11	8	13.5	10
M8-1.25	19	14	27	20	32.5	24
M10-1.5	37.5	28	53	39	64	47
M12-1.75	65	48	91.5	67.5	111.5	82
M14-2	103.5	76.5	145.5	108	176.5	131
M16-2	158.5	117.5	223.5	165.5	271	200

GEHL®

Gehl Company 143 Water Street, P.O. Box 179, West Bend, WI 53095-0179, U.S.A.