

Form No.
908016
Replaces
907095

8210

Mixer Feeder



PARTS MANUAL

GEHL® AGRICULTURE

Introduction

When ordering service parts, specify the correct part number, full description, quantity required, the unit model number and serial number.

The Mixer Feeder model and serial number is on a plate located on the left side of the Main Frame at the front left corner. "Right" and "Left" are determined from a position standing behind the Mixer Feeder facing the direction of travel. From this position, the Discharge Gate is on the "left" side.

GEHL® Company reserves the right to make changes or improvements in the design or construction of any part of the unit without incurring the obligation to install such changes on any previously delivered units.

NOTE: *On original tire replacement, Company policy prohibits the sale of replacement tires for all GEHL machinery. Replacement Wheel Sets are available and tire size information is called out with the Wheel Sets to facilitate replacement tire selection. ALL REPLACEMENT TIRES MUST BE PURCHASED LOCALLY.*

Refer to the abbreviations table located on this page for the various fastener descriptions. Standard attaching hardware torque values are also provided on the inside back cover.

Items shown in the parts list that do not have Reference Numbers are shown for reference purposes only and are NOT available for purchase.

Unless otherwise specified, all Cap Screws or Bolts are Grade 5, cadmium or zinc plated; Hexagon Nuts for Grade 5 Screws or Bolts are Grade B; Hexagon Nuts for other Screws or Bolts are Grade A.

NOTE: *The following abbreviations may used herein:*

ASSD	– Assembled
ASSY	– Assembly
CB	– Carriage Bolt
CCW	– Counterclockwise
CP	– Cotter Pin

CS	– Cap Screw (Hexagon Head)
CTR	– Center
CW	– Clockwise
DEG	– Degree
DIA	– Diameter
FCS	– Flanged Cap Screw
FHMS	– Flat Head Machine Screw
FL	– Flanged
FLN	– Flanged Lock Nut (Hexagon)
FLS	– Flanged Lock Screw (Hexagon)
FW	– Flat Washer
GA	– Gauge
GR	– Grade
HD	– Hard or Head
HN	– Hex Nut
INCL	– Includes
JT	– Joint
LG	– Large
LH	– Left Hand
LT	– Left
LW	– Lock Washer
LN	– Lock Nut
LW	– Lock Washer
M	– Metric
MM/mm	– Millimeter
NF	– National Fine
PB	– Plow Bolt
PTO	– Power Take Off
RH	– Right Hand
RHMS	– Round Head Machine Screw
RPM	– Revolutions Per Minute
RT	– Right
SERR	– Serrated
SHCS	– Socket Head Cap Screw
SHSS	– Socket Head Set Screw
SN	– Serial Number or Slotted Nut
SQ	– Square
T	– Tooth or Teeth
TFS	– Thread Forming Screw
THMS	– Truss Head Machine Screw
THRD	– Thread
WLDMT	– Weldment
#	– Number

TABLE OF CONTENTS

Introduction	Inside Front Cover
Decal Locations	2-5
Main Drive	6-7
Hitch, Axles and Weighbars	8-9
Augers and Auger Bearings	10-11
Auger Drives	12-13
Chaincase	14-15
Chaincase Mounting and Cover	16
Auger Drive Cover	17
Discharge Door and Hydraulics	18-19
One-Piece Discharge Conveyor	20-21
Two-Piece Discharge Conveyor	22-23
Transport Lights	24-25
Components	26-33
Hitchjack (Later Style)	26
Hitchjack (Early Style)	27
Augers	28-29
Planetary Gearbox	30
Hydraulic Cylinder	31
Hydraulic Motor	32
Universal Drive	33
Accessories	34-36
Safety Chain	34
Magnet Assembly	34
3-Point Scale Stand	34
Battery Box	34
Single Valve Conversion Kit	35
Audible Alarm	36
Visual Alarm	36
Remote Scale Indicator	36
Numerical Index	36-39
Index	40
Standard Hardware Torque Specifications	Inside Back Cover

DECAL LOCATIONS

GENERAL INFORMATION

Decal Location information is provided to assist in the proper selection and application of new decals, in the event the original decal(s) become(s) damaged or the machine is repainted. Refer to the listing for the illustration reference number, part number, description and quantity of each decal provided in the Kit. Refer to the appropriate illustration(s) for replacement location(s).

NOTE: Refer to the SAFETY Chapter of the Operator's Manual for the specific information provided on all of the various Safety Decals furnished in the Decal Kit(s).

To ensure proper selection for correct replacement decal(s), compare all of the various close-up location photographs to your machine BEFORE starting to refinish the unit. Then, circle each pictured decal (applicable to your machine) while checking off its part number in the listing. After you have verified all the decals needed for replacement, set aside unneeded decals for disposal.

NEW DECAL APPLICATION

Surfaces MUST be free from dirt, dust, grease and other foreign material before applying the new decal. To apply a solid-formed decal, remove the smaller portion of the decal backing paper and apply this part of the exposed adhesive backing to the clean surface while maintaining proper position and alignment. Slowly peel off the other portion of the backing paper while applying hand pressure to smooth out the decal surface.



CAUTION

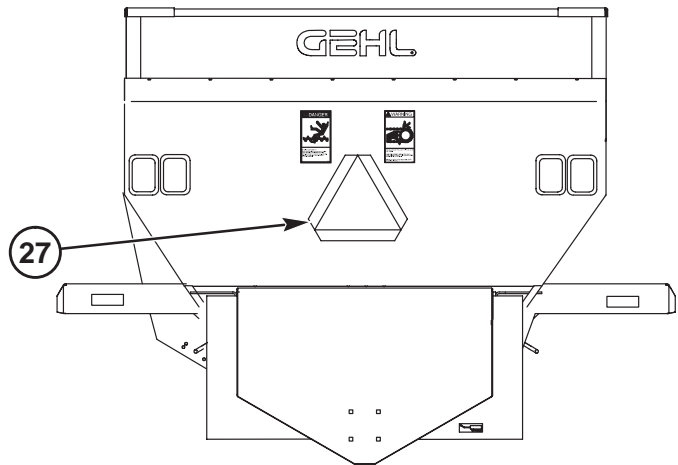
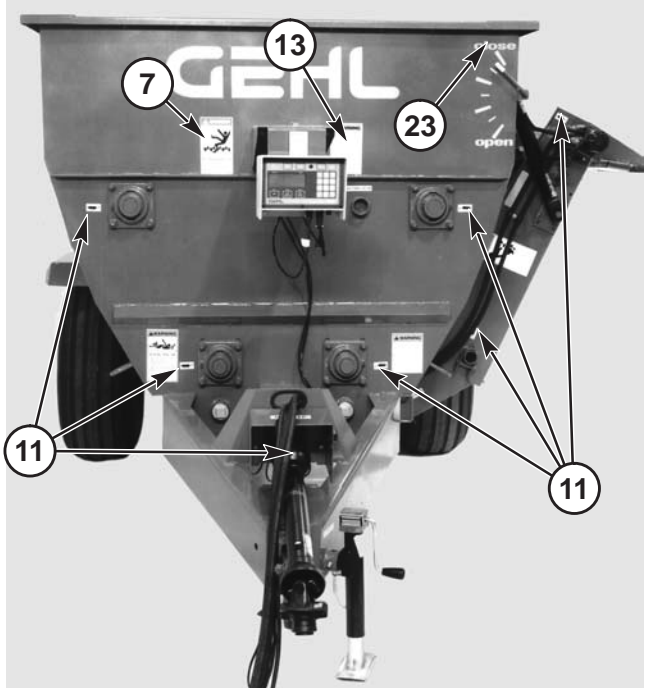
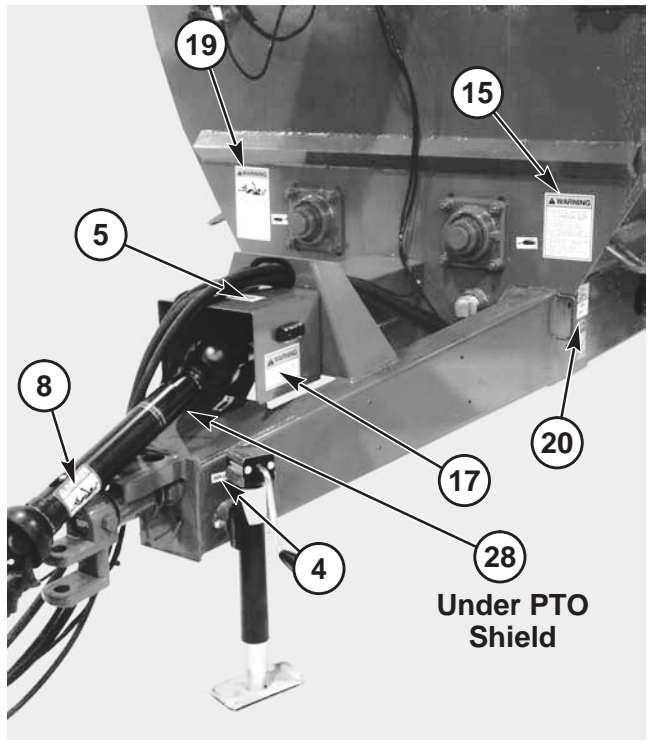
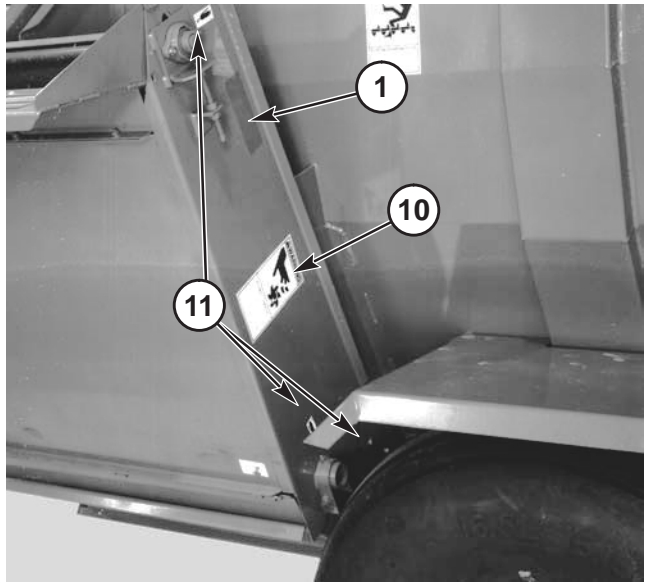
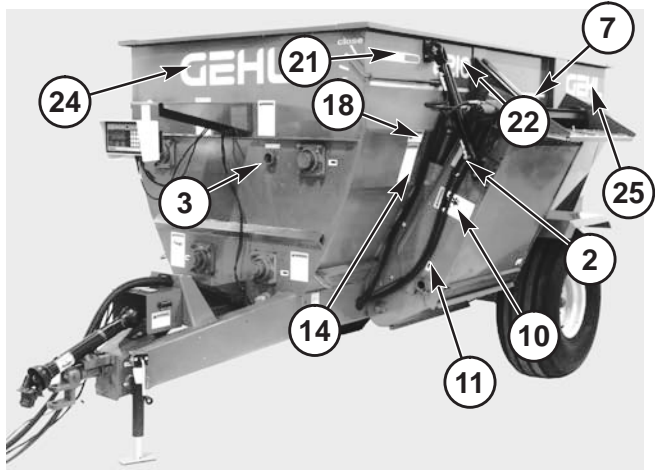
ALWAYS observe safety precautions shown on decals. If decals become damaged, or if the unit is repainted, replace the decals. If repainting **BE SURE** that **ALL** decals from the kit(s) that apply to your machine are affixed to your unit.

The Decal Set Number for the MF8210 is 120386. The Set includes the following:

PAINT NOTICE	
Use this list to order paint for refinishing:	
906315	One Gal. AG Red
906324	One Qt. Light Grey
906316	6 (12 oz. Spray Cans) AG Red
906325	6 (12 oz. Spray Cans) Light Grey

Ref. No.	Part No.	Description & Quantity
1	145216	Red Reflector (3 Places)
2	145217	Amber Reflector
3	060510	Jack Storage Position
4	060511	Jack Lifting Position
5	080247	NO Step
6	091438	WARNING - Chain Drive (2 Places)
7	091442	DANGER - Rotating Auger (4 Places)
8	091444	DANGER - Rotating Component
9	091446	ATTENTION - Add Lubrication
10	091727	WARNING - Automatic Conveyor (2 Places)(Two-Piece Conveyor Only)
11	093020	Lubrication Symbol (16* Places)
12	093366	Decal - Manual Location
13	093367	WARNING - Owner's Responsibility & Read Manual
14	093369	WARNING - Hydraulic Oil & Unplugging
15	093373	WARNING - General Safety
16	093457	WARNING - Keep Door Closed (2 Places)
17	093466	WARNING - 540 RPM Operation ONLY
18	093489	WARNING - Pinch Point
19	093653	WARNING - Rotating Drive Line
20	094951	Made in USA
21	094963	Colorbar (2 Places)
22	120301	8210 (2 Places)
23	119660	Decal - Door Position Indicating
24	122617	GEHL (2 Places)
25	122736	GEHL (2 Places)
26	126757	Stripe (Roll 3/4" x 10') (2 Required per unit & included in Decal Kit)
27	145234	SMV Marker (After Serial Number MF8210-4033)
28	143007	DANGER - Shield Missing

NOTE: *Quantities based on 2-piece Conveyor requirements.

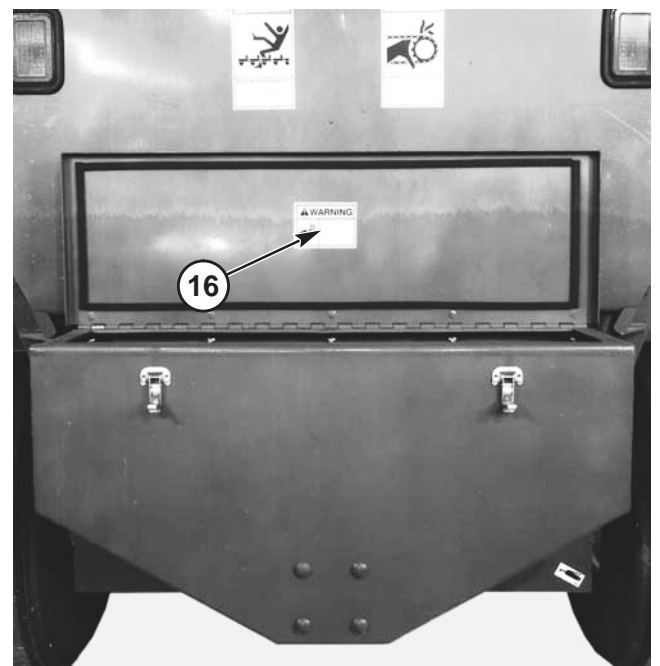
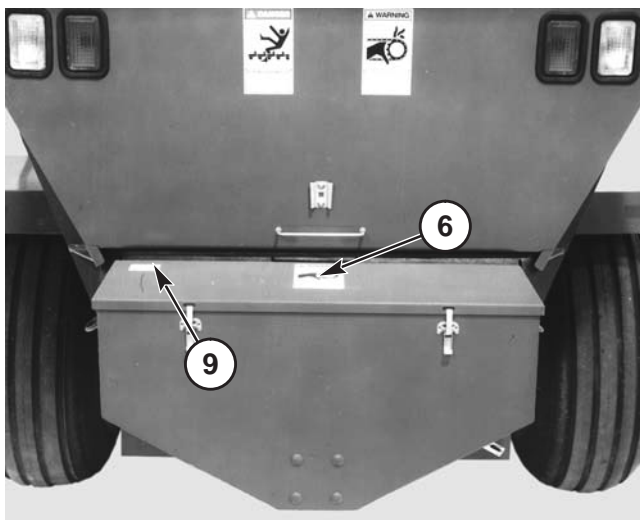
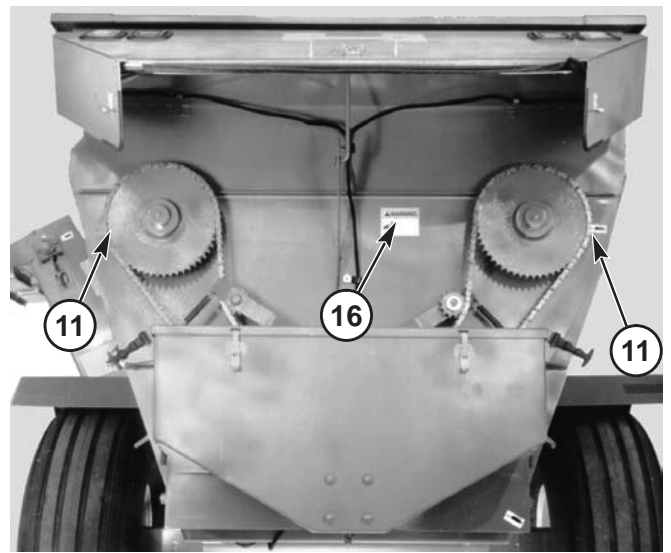
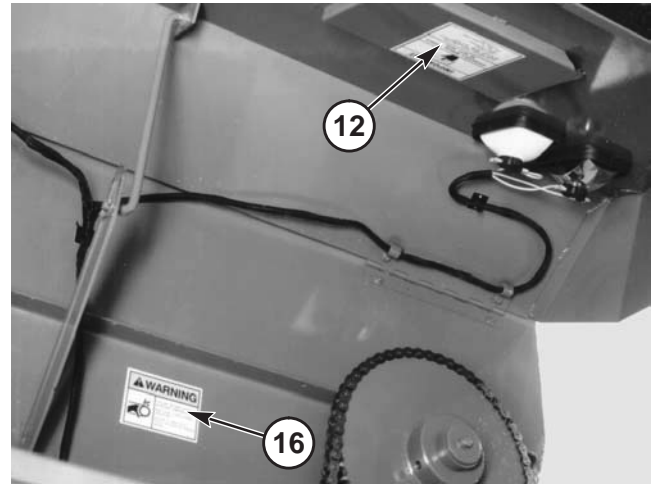
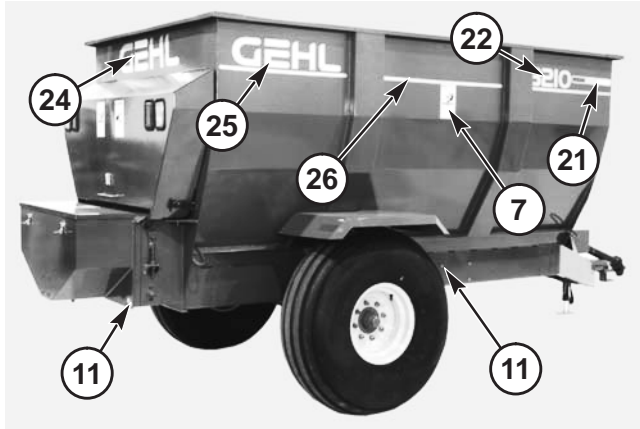


NOTE: This list is a repeat of the Decal List on a previous page and is provided for your convenience when selecting Decals from the second page of photographs.

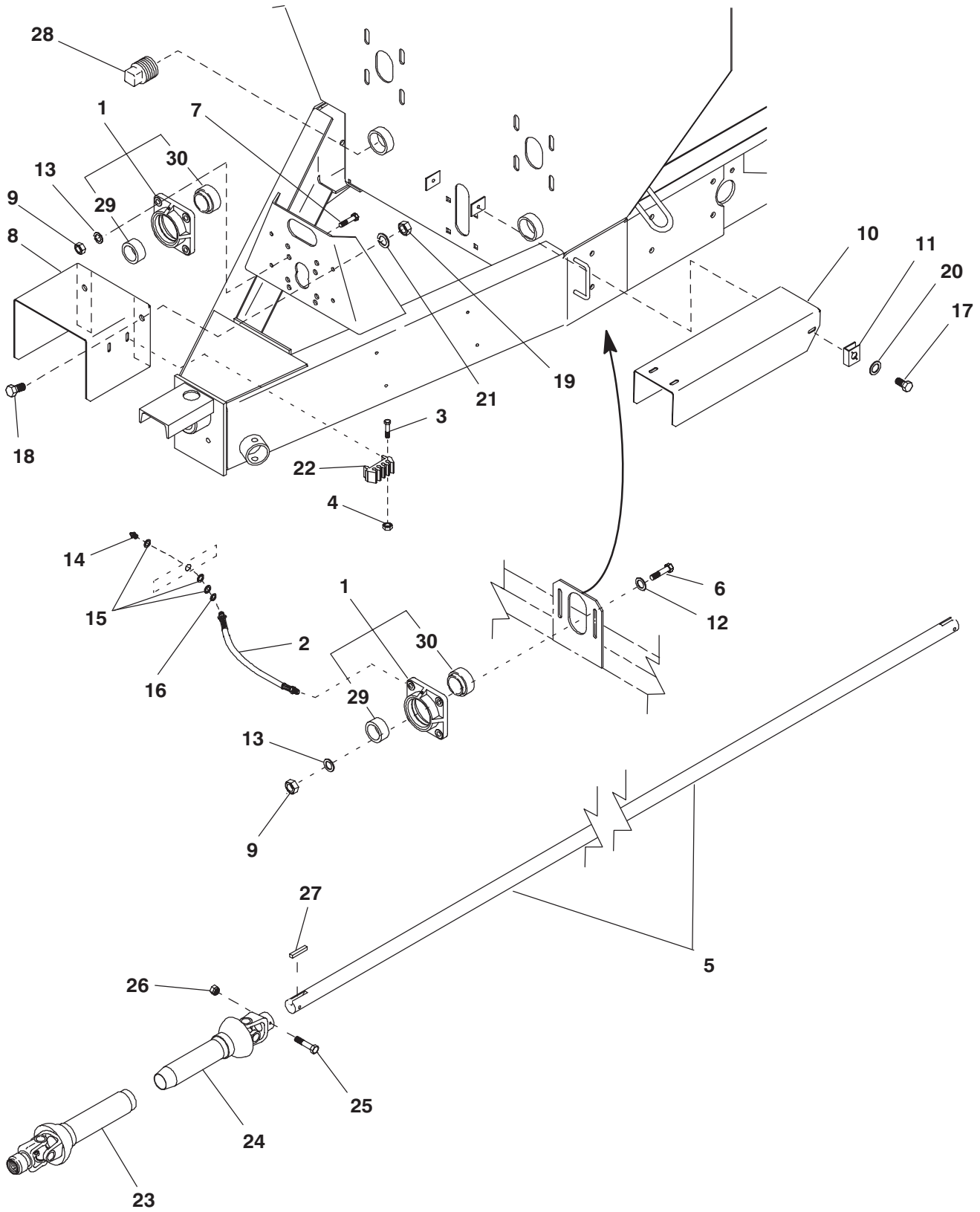
Ref. No.	Part No.	Description & Quantity
1	145216	Red Reflector (3 Places)
2	145217	Amber Reflector
3	060510	Jack Storage Position
4	060511	Jack Lifting Position
5	080247	NO Step
6	091438	WARNING - Chain Drive (2 Places)
7	091442	DANGER - Rotating Auger (4 Places)
8	091444	DANGER - Rotating Component
9	091446	ATTENTION - Add Lubrication
10	091727	WARNING - Automatic Conveyor (2 Places)(Two-Piece Conveyor Only)
11	093020	Lubrication Symbol (16* Places)
12	093366	Decal - Manual Location
13	093367	WARNING - Owner's Responsibility & Read Manual

14	093369	WARNING - Hydraulic Oil & Unplugging
15	093373	WARNING - General Safety
16	093457	WARNING - Keep Door Closed (2 Places)
17	093466	WARNING - 540 RPM Operation ONLY
18	093489	WARNING - Pinch Point
19	093653	WARNING - Rotating Drive Line
20	094951	Made in USA
21	094963	Colorbar (2 Places)
22	120301	8210 (2 Places)
23	119660	Decal - Door Position Indicating
24	122617	GEHL (2 Places)
25	122736	GEHL (2 Places)
26	126757	Stripe (Roll 3/4" x 10') (2 Required per unit & included in Decal Kit)
27	145234	SMV Marker (After Serial Number MF8210-4033)
28	143007	DANGER – Shield Missing

NOTE: *Quantities based on 2-piece Conveyor requirements.



MF8210 - MAIN DRIVE

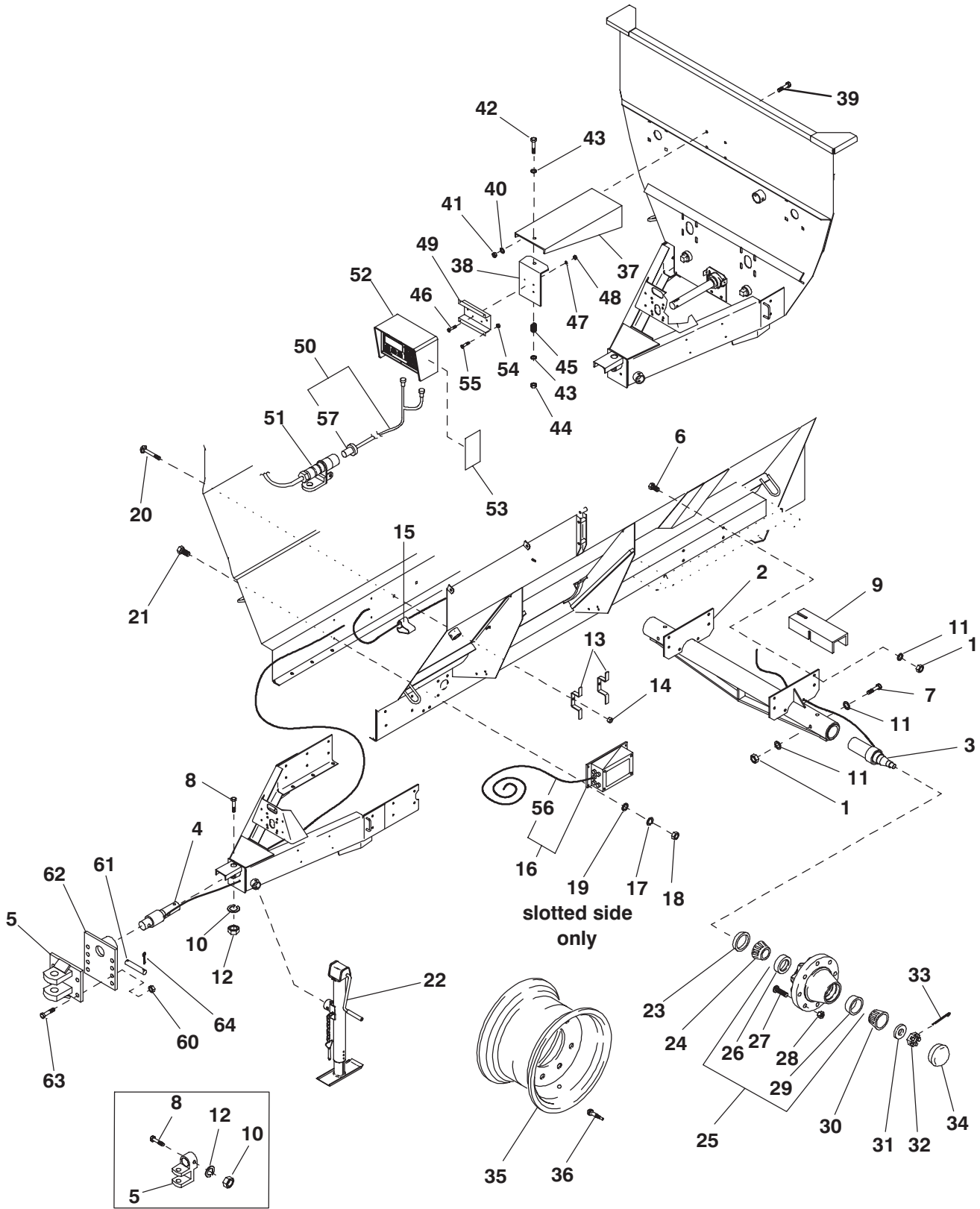


MF8210 - MAIN DRIVE

Ref. No.	Part No.	Description	Qty. Req.	Ref. No.	Part No.	Description	Qty. Req.
01	110790 _a	FLANGE/BEARING ASSY	2	18	650488	CS 3/8X3/4	4
02	091907	HOSE/ASSY	1	19	653010	HN 3/8	4
03	069066 _b	CS 1/4X1	4	20	654002	FW 1/4	4
04	071700 _b	LN 1/4	4	21	654026	LW 3/8	4
05	092654	SHAFT ASSY/LINE	1	22	059272	HOLDER/SHEAR BOLTS	1
06	650569	CS 1/2X1-3/4	4	23	092687 _c	PTO SHAFT/FRONT HALF	1
07	650453	CS 1/2X1-1/2	4	24	092688 _c	PTO SHAFT/REAR HALF	1
08	091947	SHIELD/PTO	1	25	650784	CS 5/16X2-3/4	1
09	653018	HN 1/2	8	26	071701	LN 5/16	1
10	092651	PTO SHAFT SHIELD	1	27	009476	KEY/SQUARE	1
11	092683	1/4 TINNEMAN CLIP	4	28	145775	PLUG/PLASTIC DRAIN	2
12	654009	FW 1/2	4	29	520153	COLLAR/LOCK	2
13	654030	LW 1/2	8	30	069387	BEARING/BALL	2
14	570006	FITTING/GREASE	1				
15	651148	FW 1/2 NARROW	3				
16	654006	FW 3/8	1				
17	650448	CS 1/4X3/4	4				

a) Includes Ball Bearing Ref. 30 and Lock Collar Ref. 29.
 b) For replacement Shear Bolts, order 904400 which contains eight each of 069066 CS and 071700 LN.
 c) For individual components see page titled COMPONENTS, UNIVERSAL DRIVE.

MF8210 - HITCH, AXLE & WEIGHBARS



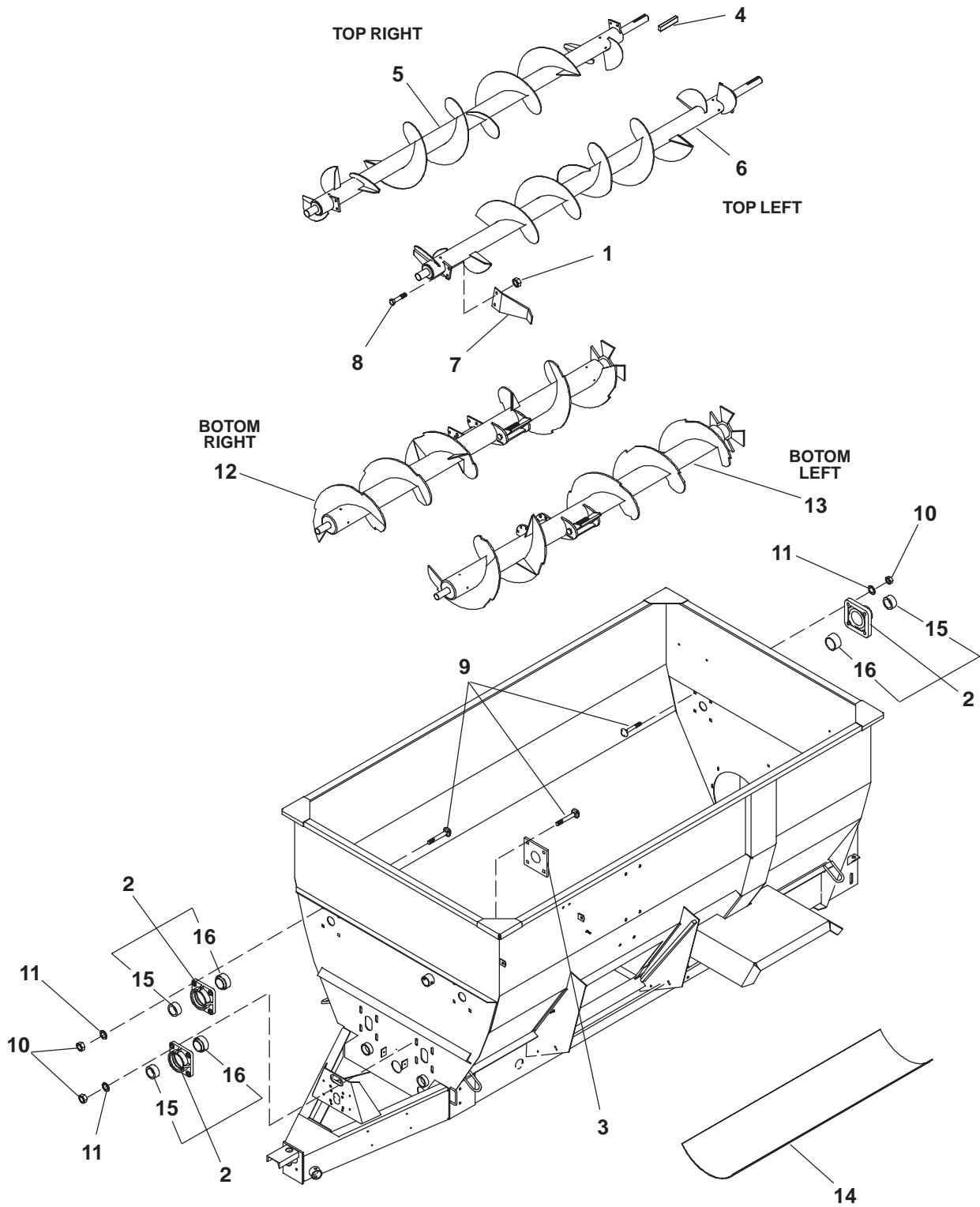
Before 8210 - 9034

MF8210 - HITCH, AXLE & WEIGHBARS

Ref. No.	Part No.	Description	Qty. Req.	Ref. No.	Part No.	Description	Qty. Req.
01	071706	LN 1/2	10	38	092798	BRACKET/INDICATOR	1
02	092672	AXLE/WELDMENT	1	39	650490	CS 3/8X1	4
03	091887	SPINDLE/WEIGHBAR	2	40	654026	LW 3/8	4
04	120300	WEIGHBAR	1	41	653010	HN 3/8	4
05	144618	HITCH ASSEMBLY	1	42	650644	CS 1/2X3	1
		(AFTER SN4033)		43	654009	FW 1/2	2
	092680 _b	CLEVIS 1.88	1	44	071706	LN 1/2	1
		(BEFORE SN4034)		45	055342	SPRING	1
06	650453	CS 1/2X1-1/2	8	46	650542	CS 1/4X1/2	4
07	650498	CS 1/2X6	2	47	654022	LW 1/4	4
08	650709	CS 3/4X4	2	48	653005	HN 1/4	4
09	092646	WEIGH BAR SHIELD	2	49	092684	BRACKET/INDICATOR MOUNT	1
10	653026	HN 3/4	2	50	093030	CORD/POWER	1
11	654009	FW 1/2	12	51	600798	CONNECTOR/FEMALE	1
12	654034	LW 3/4	2	52	170048	INDICATOR/MODEL EZ2000	1
13	067179	HOLDER/SCALE CORD	2			(LATER STYLE)	
14	071703	LN 3/8	2	170049	INDICATOR/MODEL EZ3200		1
15	092675	CLIP/CABLE FRAME	AR			(LATER STYLE)	
16	093807	BOX/JUNCTION (INCL REF. 56)	1	112518	INDICATOR/MODEL 1500		1
17	650549	LW #10	4			(EARLY STYLE)	
18	650550	HN 10-24	4	112519	INDICATOR/MODEL 2100		1
19	650584	FW #10	2			(EARLY STYLE)	
20	650790	CB 3/8X3/4	2	112520	INDICATOR/MODEL 3200		1
21	650815	RHMS#10-24X3/4	4			(EARLY STYLE)	
22	143471 _a	JACK/ASSY (LATER STYLE)	1	53	613477	DECAL/CAUTION INDICATOR LEADS	1
	081464 _a	JACK/ASSY (EARLY STYLE)	1	54	650550	NUT/HEX MS #1024	2
23	604328	SEAL/OIL	2	55	650815	RHMS#1024X3/4	2
24	520214	CONE/BEARING (INNER)	2	56	120814	CABLE/15 FT	1
25	083100	HUB/ASSY	2	57	069129	PLUG/2-WAY TRAILER	1
26	520213	CUP/BEARING (INNER)	2	60	067823	NILN 5/8	4
27	078657	BOLT/WHEEL	16			(AFTER SN9033)	
28	079152	NUT/WHEEL	16	61	141333	PIN/TOP LINK	1
29	520054	CUP/BEARING (OUTER)	2			(AFTER SN9033)	
30	520201	CONE/BEARING (OUTER)	2	62	145562	HITCH PLATE ASSY	1
31	654015	FW 7/8	2			(AFTER SN9033)	
32	653102	SN 7/8	2	63	651167	CS 5/8X2	4
33	655046	CP 5/32X1-3/4	2			(AFTER SN9033)	
34	058421	HUB CAP/SPINDLE	2	64	655020	CP 3/16X1-1/2	2
35	112443	WHEEL/RIM W11C-16.1	2			(AFTER SN9033)	
	112444	WHEEL/RIM W8B-20	2				
36	045581	VALVE/TIRE	2				
37	092797	SUPPORT/INDICATOR	1				

a) For individual component parts see page titled COMPONENTS, HITCHJACK.
b) For replacement order 141005 Hitch Clevis Kit.

MF8210 - AUGERS & AUGER BEARINGS

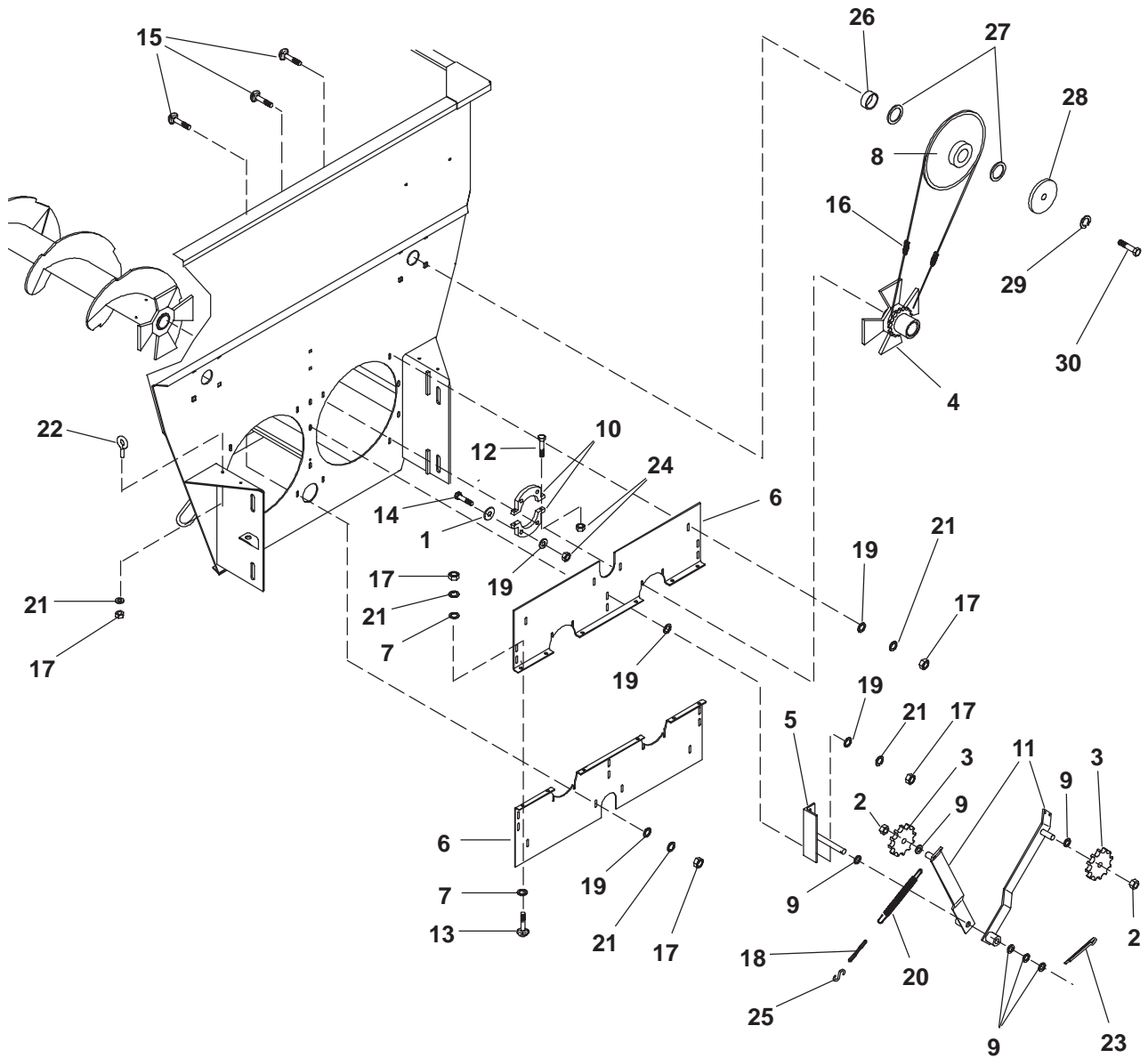


MF8210 - AUGERS & AUGER BEARINGS

Ref. No.	Part No.	Description	Qty. Req.	Ref. No.	Part No.	Description	Qty. Req.
01	071706	LN 1/2	8	10	653021	HN 5/8	24
02	091913 _a	FLANGE/BEARING ASSY	6	11	654032	LW 5/8	24
03	092640	BACKING PLATE-BEARING	2	12	119959 _b	AUGER/BOTTOM RT	1
04	117010	KEY/SQUARE 1/2	2	13	119960 _b	AUGER/BOTTOM LT	1
05	119957 _b	AUGER/TOP RT	1	14	095114	LINER/TROUGH (60X18")	4
06	119958 _b	AUGER/TOP LT	1	15	089867	COLLAR/LOCK	2
07	119966	PADDLE/END	4	16	091914	BEARING/BALL	2
08	650453	CS 1/2X1-1/2	8				
09	651320	CB 5/8X2	24				

a) Includes Ball Bearing Ref. 16 and Lock Collar Ref. 15.
b) For components, see page titled COMPONENTS, AUGERS.

MF8210 - AUGER DRIVES

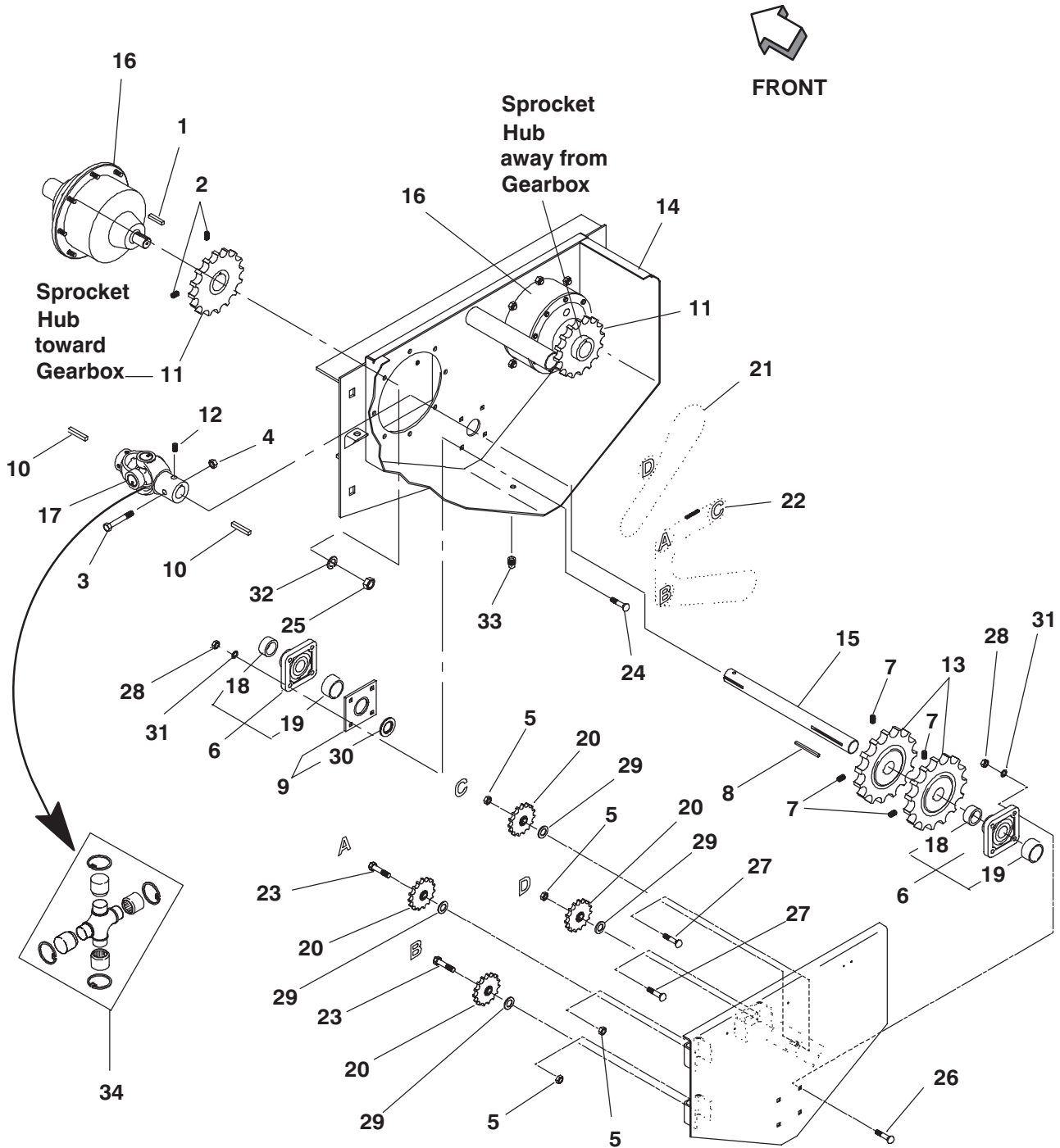


MF8210 - AUGER DRIVES

Ref. No.	Part No.	Description	Qty. Req.	Ref. No.	Part No.	Description	Qty. Req.
01	B11296	FW 11/32	8	17	653007	HN 5/16	26
02	071709	LN 5/8	2	18	092643	CHAIN	2
03	091902	SPROCKET/IDLER #60X13T	2	19	654004	FW 5/16	26
04	117006	STAR/SPLINED ASSY	2	20	17H349	SPRING/EXTENSION	2
05	119993	BRACKET/IDLER	1	21	654024	LW 5/16	24
06	092647	PANEL/ADJUSTMENT	2	22	061858	BOLT/EYE	2
07	650810	FW 5/16 NARROW	12	23	655020	CP 3/16X1-1/2	1
08	117020	SPROCKET #60X54T	2	24	064260	NILN 5/16	12
09	654014	FW 3/4	AR	25	B11433A	S-HOOK	2
10	117004	HALF/SEALING WASHER	4	26	117011	SPACER	2
11	119995	IDLER ARM ASSY	2	27	069793	BUSHING	26
12	650568	CS 5/16X2	4	28	063590	WASHER	2
13	650487	CS 5/16X1	6	29	654026	LW 3/8	18
14	650692	CS 5/16X1-3/4	8	30	650490	CS 3/8X1	2
15	650745	CB 5/16X1-1/4	16				
16	041492 _a	CHAIN/ROLLER #60X106	2				

a) Includes Connector Link 500160.

MF8210 - CHAINCASE

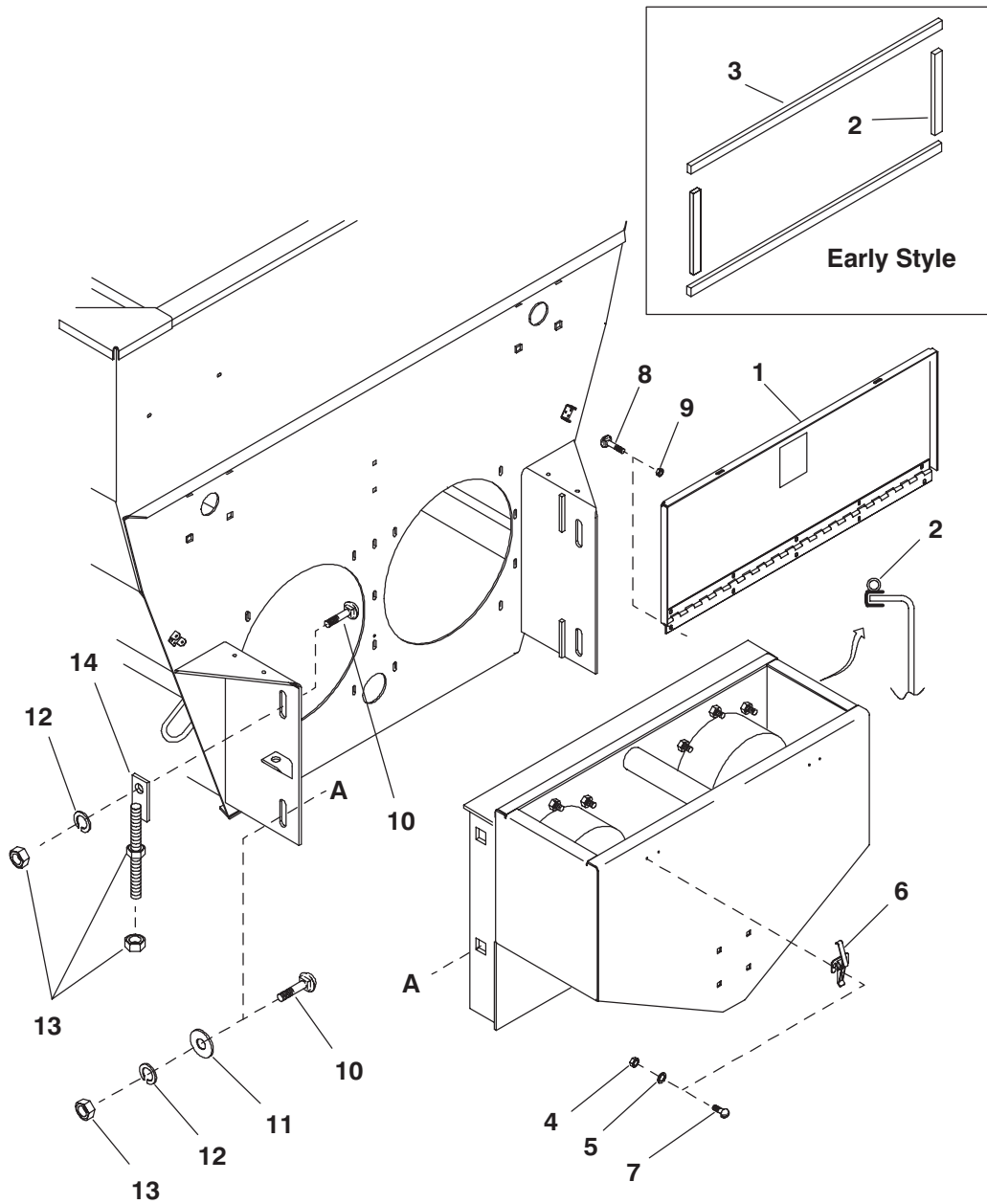


MF8210 - CHAINCASE

Ref. No.	Part No.	Description	Qty. Req.	Ref. No.	Part No.	Description	Qty. Req.
01	006989	KEY/SQUARE	2	20	091902	SPROCKET/IDLER ASSY	4
02	650203	SHSS 5/16X3/8	4	21	048721 _d	CHAIN/ROLLER #60X49	1
03	650833	CS 5/16X3	1	22	091883 _d	CHAIN/ROLLER #60X80	1
04	071701	LN 5/16	1	23	650647	CS 5/8X2	2
05	071709	LN 5/8	4	24	650774	CB 1/2X2	4
06	110790 _a	FLANGE/BEARING ASSY	2	25	651107	HN 9/16 (UNF)	18
07	650214	SHSS 3/8X1/2	4	26	651324	CB 1/2X1-1/2	4
08	009477	KEY 5/16 SQ X 2-1/2	1	27	651320	CB 5/8X2-3/4	2
09	092660	SEAL PLATE ASSY (INCL REF. 36)	1	28	653018	HN 1/2	8
10	009476	KEY 5/16 SQ X 1-1/4	2	29	654012	FW 5/8	AR
11	084799	SPROCKET 16T (INCL REF. 2)	2	30	053961	OIL SEAL	1
12	650212	SHSS 3/8X3/8	2	31	654030	LW 1/2	8
13	091906	SPROCKET/60B15T (INCL REF. 7)	2	32	654056	LW 9/16	18
14	119981	CHAIN CASE WELDMENT	1	33	660004	PLUG/PIPE 1/2 SQ HD	1
15	119982	SHAFT/INPUT	1	34	510114	KIT/CROSS (INCL 570009 GREASE FITTING)	1
16	119727 _b	GEARBOX/MODEL 6	2				
17	092674 _c	JOINT/UNIVERSAL	1				
18	089867	COLLAR/LOCK	2				
19	091914	BEARING/BALL	2				

- a) Includes Ball Bearing Ref. 19 and Lock Collar Ref. 18.
- b) For components, see page titled **COMPONENTS, PLANETARY GEARBOX.**
- c) For repair, order Cross Kit Ref. 34.
- d) Includes Connector Link 500160.

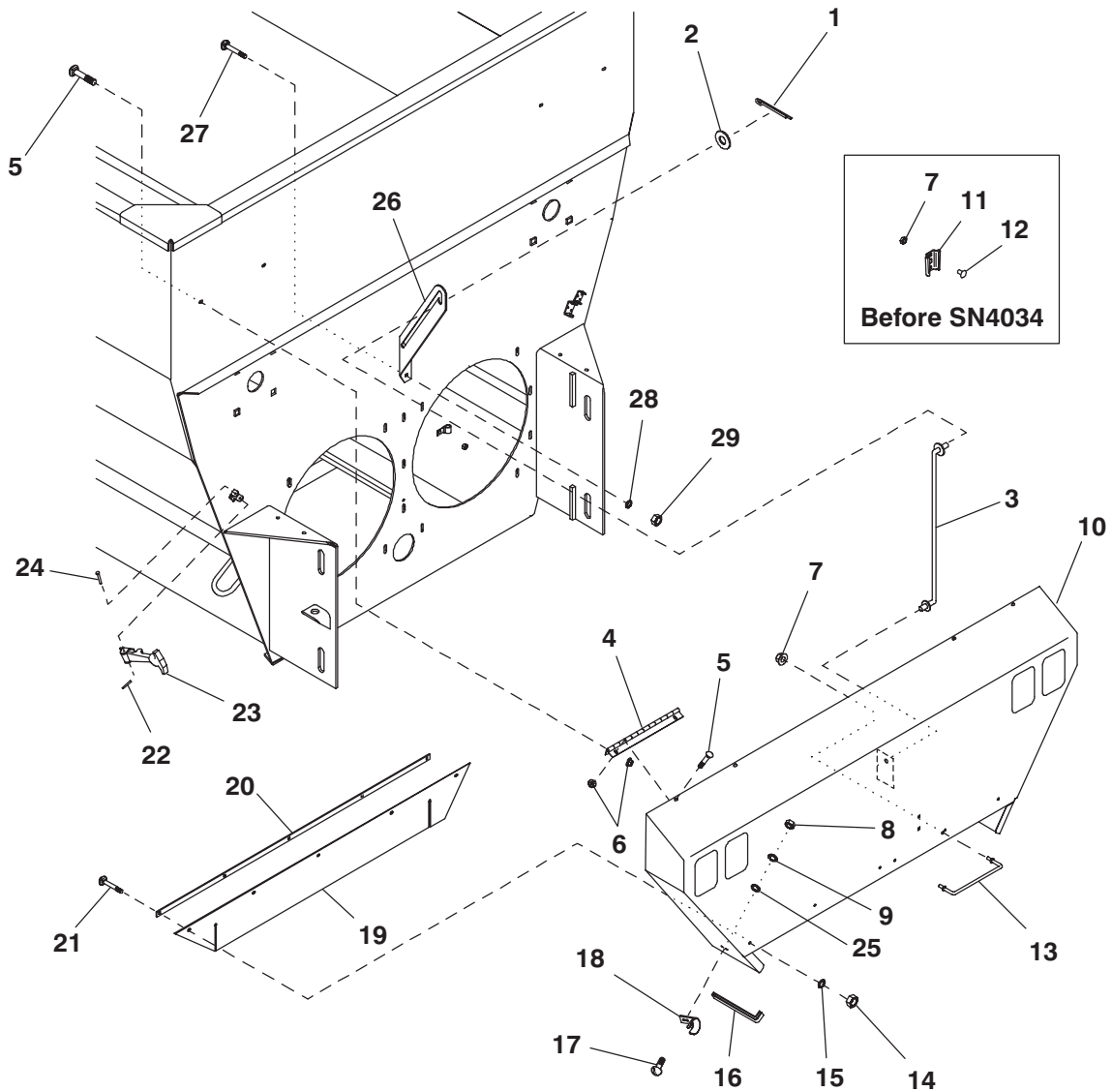
MF8210 - CHAINCASE MOUNTING & COVER



Ref. No.	Part No.	Description	Qty. Req.	Ref. No.	Part No.	Description	Qty. Req.
01	120797 _a	COVER/CHAIN CASE ASSY	1	07	650812	RHMS 12-24X1/2	4
02	144457	TRIM/SEAL	1	08	650758	CB 1/4X3/4	5
		(LATER STYLE)		09	070634	FLN 1/4	5
	120303 _b	SEAL/COVER	2	10	651319	CB 3/4X1-3/4	4
		(EARLY STYLE)		11	654014	FW 3/4	2
03	119710 _b	SEAL/COVER	2	12	654034	LW 3/4	4
		(EARLY STYLE)		13	653026	HN 3/4	8
04	650627	HN #12-24	4	14	092667	BRACKET/ADJUSTMENT ASSY	2
05	650813	LW #12	4				
06	079878	LATCH	2				

a) Includes 091438 & 093457 Decals and 144457 Trim Seal.
 b) Replaced by 144457 Trim Seal.

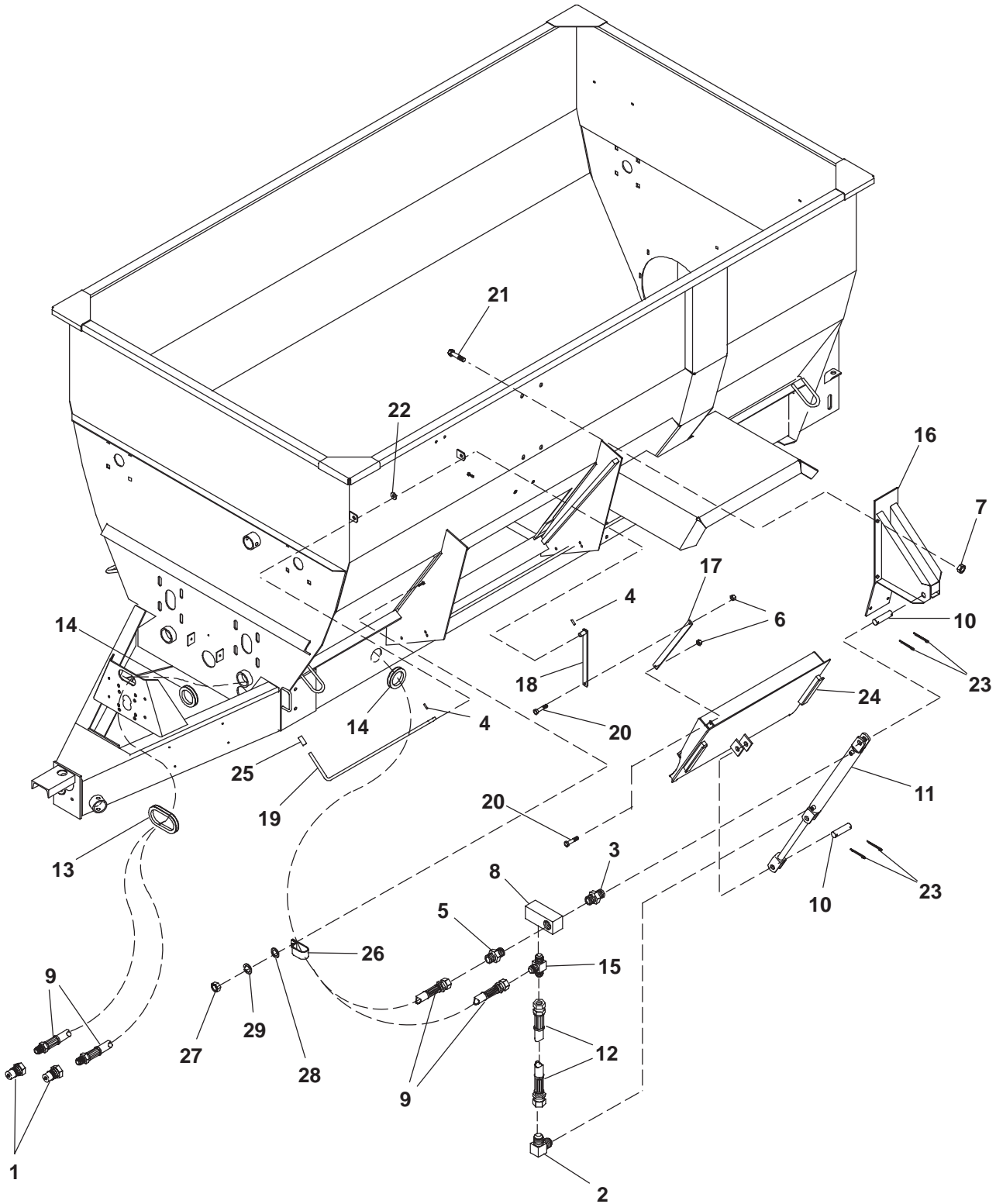
MF8210 - AUGER DRIVE COVER



Ref. No.	Part No.	Description	Qty. Req.	Ref. No.	Part No.	Description	Qty. Req.
01	655016	CP 3/16X1	2	16	068960	TRIM 12"	2
02	651273	FW 1/2	2	17	650548	RHMS 10-24X1/2	4
03	120291	PROP ROD ASSY	1	18	111421	CLEVIS BRACKET	2
04	119999	HINGE/SHIELD	2	19	120293	FLAP/SHIELD	1
05	650771	CB 1/4X1/2	8	20	120294	STRAP/BELT	1
06	070634	FLN 1/4	8	21	650758	CB 1/4X3/4	5
07	070648	FLN 5/16	4	22	650590	CP 1/16X1/2	2
08	650550	HN #10-24	4	23	091899	HOOK/RUBBER	2
09	650549	LW #10	4	24	092665	PIN/CLEVIS3/16X1-5/8	2
10	120798 _a	SHIELD/REAR	1	25	650584	FW #10	4
11	047269	SOCKET/SIGN MOUNTING	1	26	120286	GUIDE/ROD	1
12	650969	CB 5/16X5/8	2	27	650704	CB 3/8X1	2
13	119664	HANDLE/LIFT	1	28	654026	LW 3/8	2
14	653005	HN 1/4	5	29	653010	HN 3/8	2
15	654022	LW 1/4	5				

a) Includes Decals 091438, 091442 and 093366.

MF8210 - DISCHARGE DOOR & HYDRAULICS

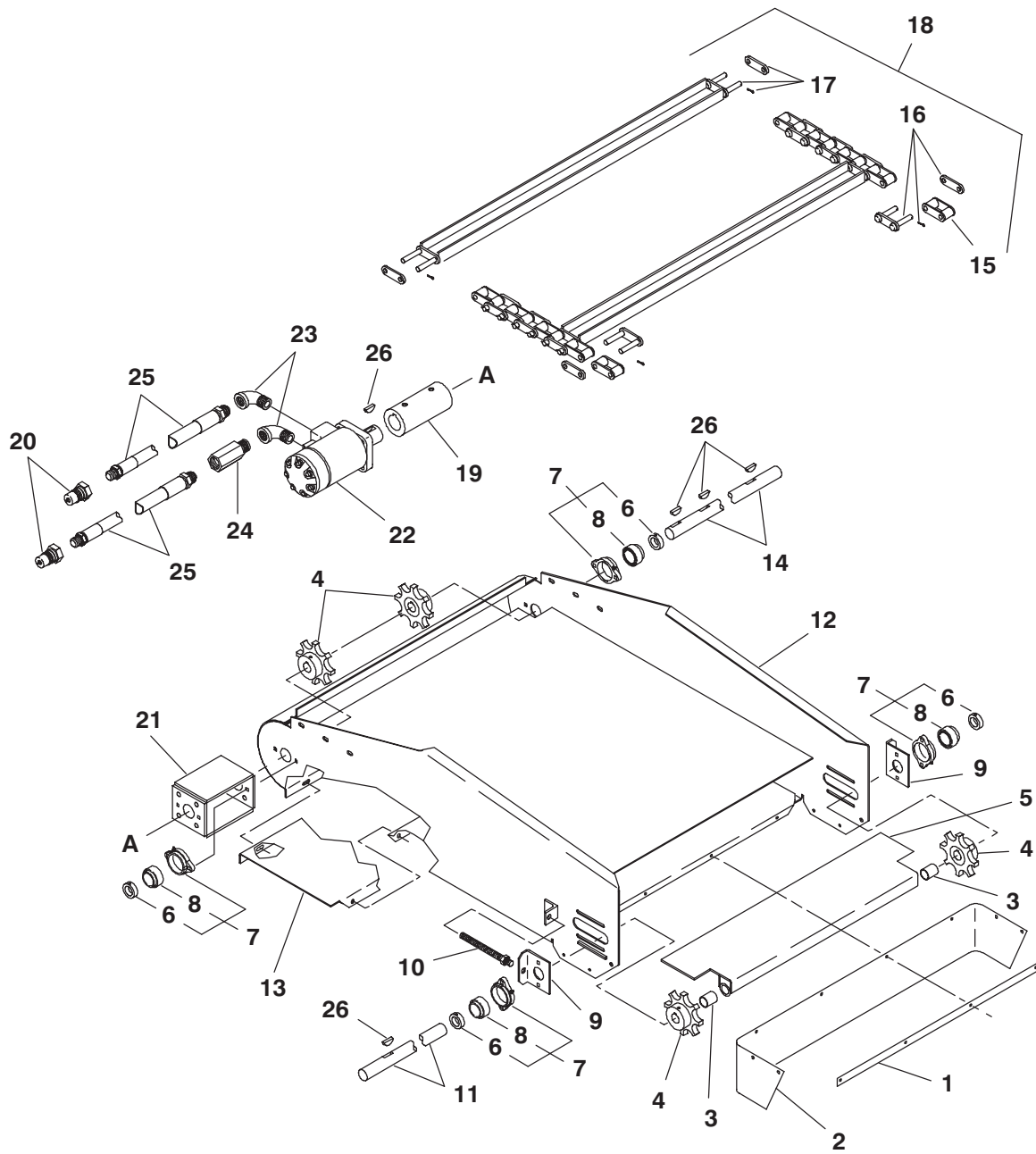


MF8210 - DISCHARGE DOOR & HYDRAULICS

Ref. No.	Part No.	Description	Qty. Req.	Ref. No.	Part No.	Description	Qty. Req.
01	056080	QUICK-DISCONNECT (MALE)	2	17	118925	LINK/INDICATOR LOWER	1
02	057650	ELBOW/HYD FITTING 90 DEG	1	18	118928	LINK/INDICATOR UPPER	1
03	057653	UNION/HYD FITTING	1	19	118933	ROD/PIVOT	1
04	057864	PIN/SPRING	2	20	650487	CS 5/16X1	2
05	062889	UNION/HYD FITTING	1	21	650495	CS 1/2X1-1/4	6
06	071701	LN 5/16	2	22	654009	FW 1/2	1
07	071706	LN 1/2	6	23	655020	CP 3/16X1-1/2	4
08	091889	VALVE/HYDRAULIC RELIEF	1	24	092645	DOOR/DISCHARGE	1
09	091895	HOSE/ASSY	2	25	119493	CAP/VINYL	1
10	092642	HINGE PIN/DOOR	2	26	067880	CLAMP/HOSE	2
11	091882 _a	CYLINDER/HYD. 2 X 16 (DOOR)	1	27	653005	HN 1/4	2
12	091894	HOSE/ASSY	1	28	654002	FW 1/4	2
13	113012	TRIM	1	29	654022	LW 1/4	2
14	113013	TRIM	2				
15	113109	TEE/HYDRAULIC FITTING	1				
16	094087	BRACKET/CYLINDER	1				

a) For individual components see page titled **COMPONENTS, HYDRAULIC CYLINDER.**

MF8210 - ONE-PIECE DISCHARGE CONVEYOR

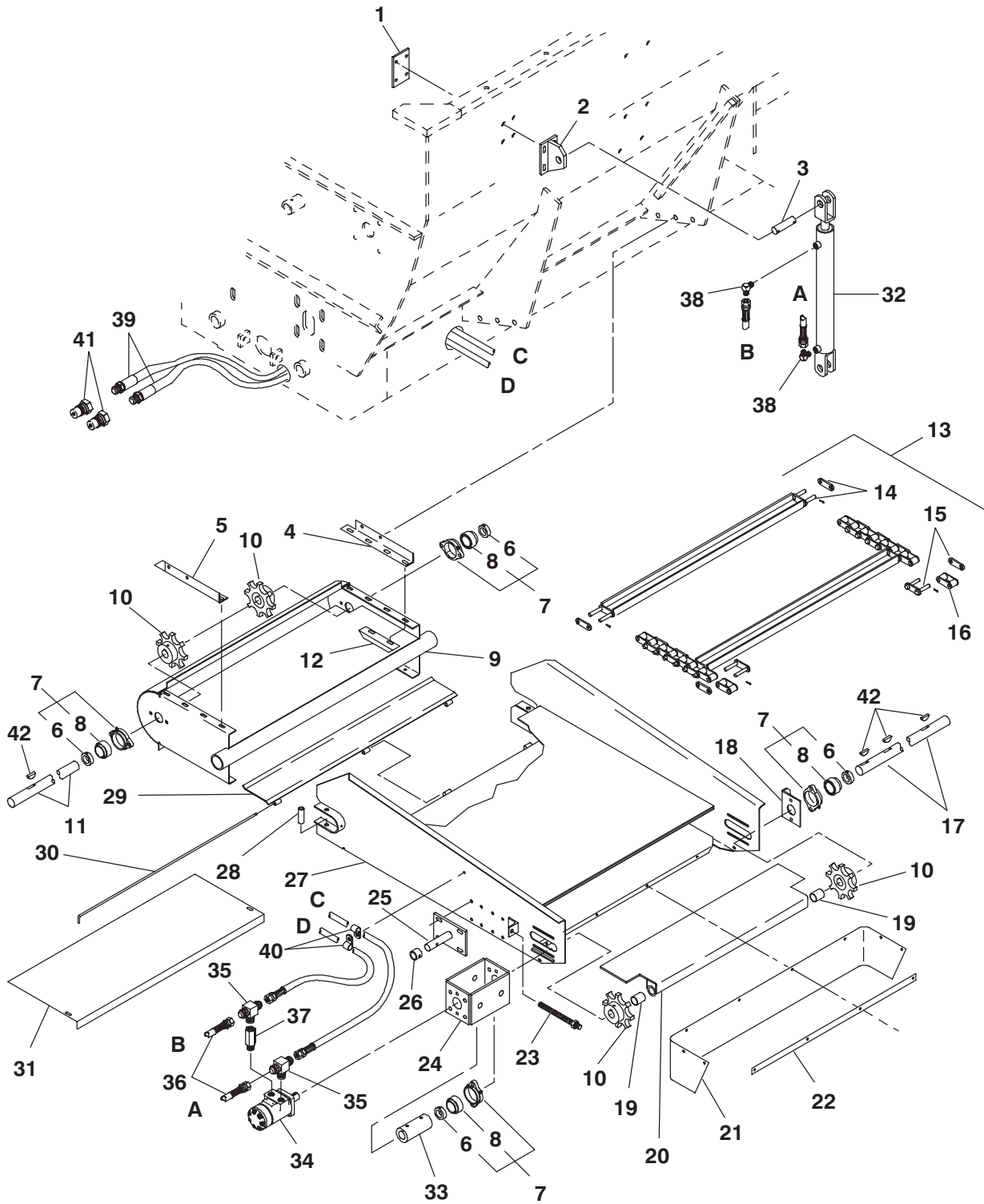


MF8210 - ONE-PIECE DISCHARGE CONVEYOR

Ref. No.	Part No.	Description	Qty. Req.	Ref. No.	Part No.	Description	Qty. Req.
01	092602	STRAP/DEFLECTOR	1	14	092606	SHAFT/CONVEYOR	1
	650448	CS 1/4X3/4 (HN, LW)	4	15	091886	LINK/HALF	AR
02	092603	DEFLECTOR/BELT	1	16	092779	LINK/STEEL W/PINS	AR
	650448	CS 1/4X3/4 (HN, LW, FW)	8	17	092608	SLAT W/LINK & PINS	6
03	091892	BUSHING	2	18	092607	CONVEYOR CHAIN ASS'Y	1
04	091893	SPROCKET/8T	4	19	091908	COUPLER/CONV. DR SHAFT	1
05	092610	ADJ. FLOOR PLATE ASSY	1		650201	SHSS 5/16X5/16	2
	570014	FITTING/GREASE	2	20	056080	QUICK DISCONNECT (MALE)	2
06	520084	COLLAR/LOCK	4			(LATER UNITS)	
07	091923	FLANGE/BEARING (INCL 6 & 8)	4	21	092619	MOUNT/HYD MOTOR WELDMENT	1
	570009	FITTING/GREASE	4		650060	CS 3/8X1 (LW)	4
	650533	CS 3/8X1-1/2 (HN, LW, 4FW)	8	22	065500 ^a	MOTOR/HYDRAULIC	1
08	042903	BEARING/BALL	4	23	058654	ELBOW/HYD FITTING 90 DEG	2
09	092601	BEARING ADJ. PLATE	2	24	067457	VALVE/HYDRAULIC CHECK (1/2 DIA) ..	1
10	092600	ROD/THREADED (4HN 1/2)	2	25	091897	HOSE 135" LONG	2
11	092611	SHAFT/CONVEYOR UPPER	1	26	650513	KEY/WOODRUFF 1/4X1	5
12	092605	CONVEYOR	1				
	650490	CS 3/8X1 (HN, LW, 2FW)	6				
13	092604	CONVEYOR/DUMP PLATE	1				
	650487	CS 5/16X1 (HN, LW, FW)	4				

a) For individual components, see page titled, 'Components, Hydraulic Motor & Cylinders'.

MF8210 - TWO-PIECE DISCHARGE CONVEYOR

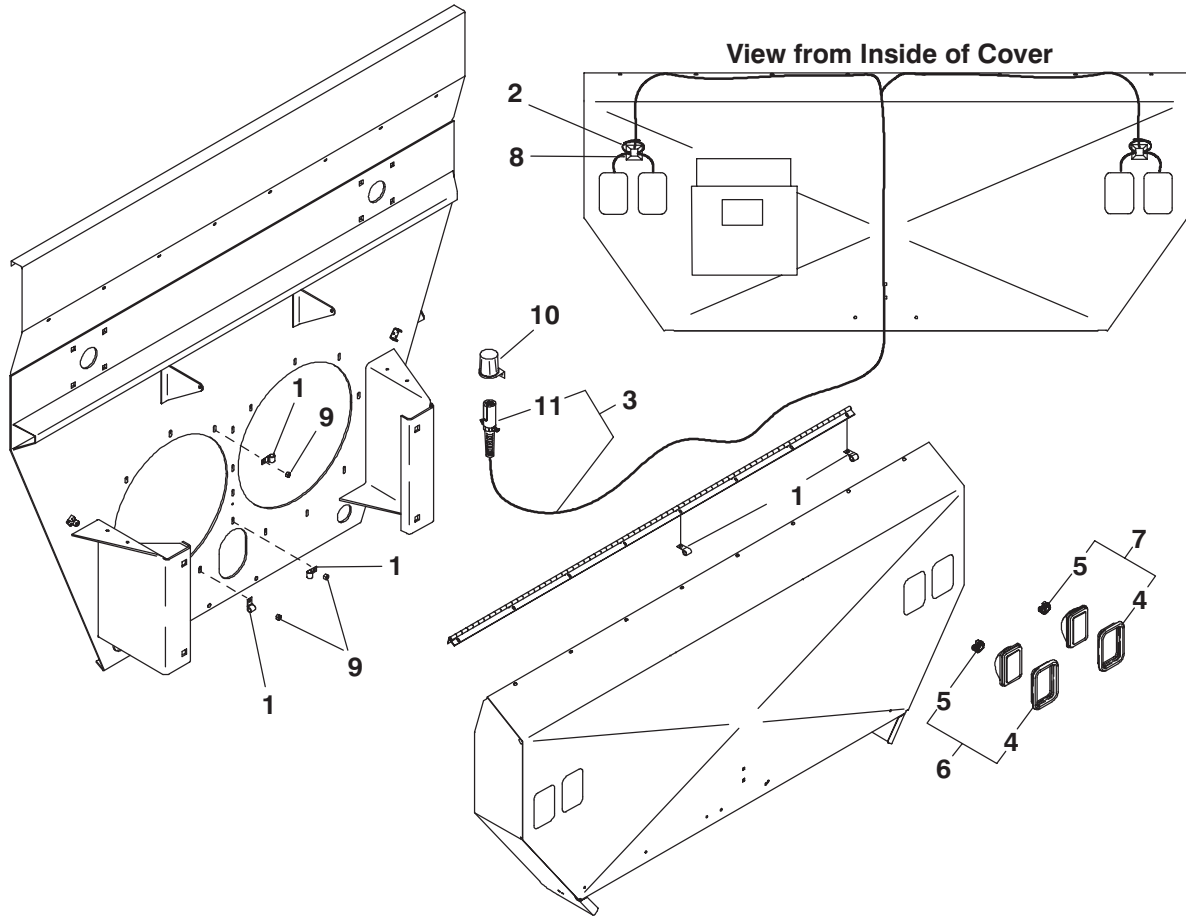


MF8210 - TWO-PIECE DISCHARGE CONVEYOR

Ref. No.	Part No.	Description	Qty. Req.	Ref. No.	Part No.	Description	Qty. Req.
01	092626	BACKING PLATE CONV. CYL.	1	23	092600	ROD/THREADED (4HN 1/2)	2
	650773	CB 3/8X1/2 (HN, LW, FW)	4	24	092619	MOUNT/MOTOR	1
02	092621	BRACKET/CYLINDER LIFT	1	25	092618	SUPPORT/CYLINDER	1
03	092622	PIN/CYLINDER HINGE	1		650490	CS 3/8X1 (HN, LW, FW)	4
	655022	CP 3/16X1-3/4	2	26	092627	RETAINER/CYLINDER	1
04	092628	MOUNT/CONVEYOR R.H.	1		650692	CS 5/16X1-3/4 (HN, LW)	1
	650490	CS 3/8X1 (HN, LW)	2	27	092617	CONVEYOR/UPPER	1
05	092629	MOUNT/CONVEYOR L.H.	1		570014	FITTING/GREASE	2
	650490	CS 3/8X1 (HN, LW)	2	28	092625	TUBE/PIVOT RETAINER	2
06	520084	COLLAR/BEARING	4		650594	CS 1/2X3-1/4 (LN)	2
07	091923	FLANGE/BEARING ASSY	4	29	092631	PLATE/PIVOT	1
	570009	FITTING/GREASE	4	30	092630	SHAFT/PIVOT	1
	071381	CS 3/8X1 FULL THD (HN, LW)	4		650551	CP 3/32X3/4	1
	650533	CS 3/8X1-1/2 (HN, LW, FW)	4	31	092624	BOTTOM PLATE LOW. CONV.	1
08	042903	BEARING	4	32	091882 _a	CYLINDER/HYDRAULIC 2X16	1
09	092615	CONVEYOR/LOWER	1	33	091908	COUPLER/SHAFT	1
	650060	CS 3/8X1 (HN, LW, 8FW)	4		650201	SHSS 5/16X5/16	2
10	091893	SPROCKET/8T	4	34	065500 _a	MOTOR/HYDRAULIC	1
11	092616	SHAFT/LOWER CONV DRIVE	1		650490	CS 3/8X1 (LW)	4
12	092623	GUIDE/CHAIN	2	35	067769	FITTING/TEE	2
	650533	CS 3/8X1-1/2 (HN, LW, 8FW)	4	36	062404	HOSE/HYDRAULIC	2
13	092634	CHAIN/CONVEYOR ASSY	1	37	067457	VALVE/HYDRAULIC CHECK	1
14	092608	SLAT W/LINK & PINS	9	38	062405	ELBOW/MALE 1/2	2
15	092779	LINK/STEEL W/PINS	AR	39	092632	HOSE/ASSY 195"	2
16	091886	LINK/HALF	AR	40	048967	CLAMP/INSULATED HOSE	2
17	092620	SHAFT/DRIVE UPPER	1		650426	CS 1/4X1-1/4 (HN, LW, 2FW)	1
18	092601	BEARING/ADJ. PLATE	1	41	056080	QUICK DISCONNECT (MALE)	2
19	091892	BUSHING	2			(LATER UNITS)	
20	092610	PLATE/ADJ. FLOOR	1	42	650513	KEY/WOODRUFF 1/4X1	5
21	092603	DEFLECTOR/BELT	1				
	650448	CS 1/4X3/4 (HN, LW, FW)	4				
22	092602	STRAP/DEFLECTOR	1				
	650448	CS 1/4X3/4 (HN, LW)	4				

a) For components, see page titled
'Components, Hydraulic Motor & Cylinders.'

MF8210 - TRANSPORT LIGHTS



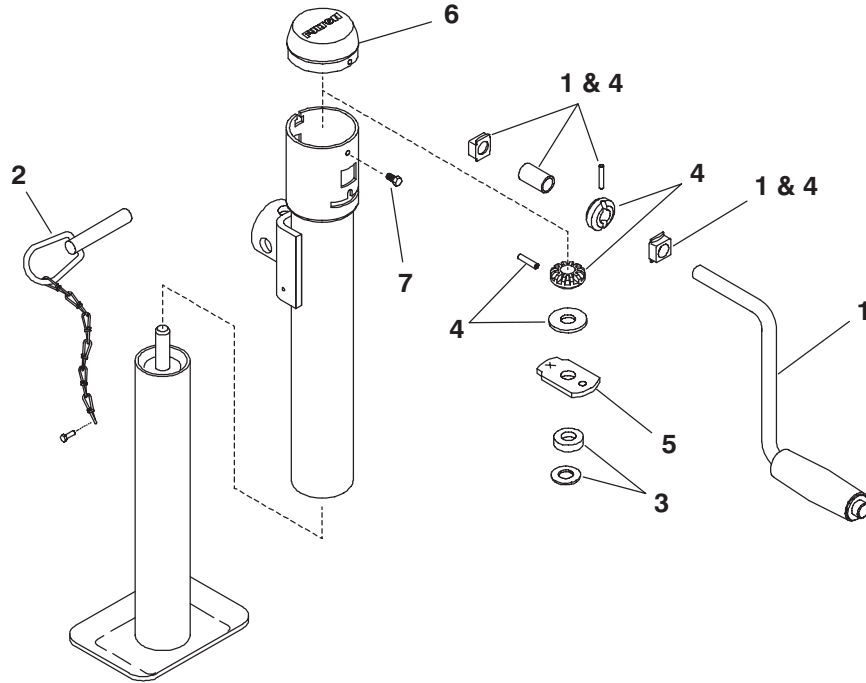
MF8210 - TRANSPORT LIGHTS

Ref. No.	Part No.	Description	Qty. Req.	Ref. No.	Part No.	Description	Qty. Req.
01	058615	CLAMP/HOSE	7	07	119666	LIGHT ASSY/RED	2
02	074091	TIE/NYLON	2	08	125946	BASE/MOUNTING	2
03	119662	HARNESS/WARNING LIGHTS	1	09	653010	HN 3/8	3
04	119532	BEZEL/WARNING	4	10	112886 _a	HOLDER/PLUG	1
05	119533	SOCKET/WARNING	4	11	112917	PLUG/7-PIN W/CABLE PROTECTOR ...	1
06	119665	LIGHT ASSY/AMBER	2				

a) Optional accessory.

MF8210 - COMPONENTS, HITCHJACK (LATER STYLE)

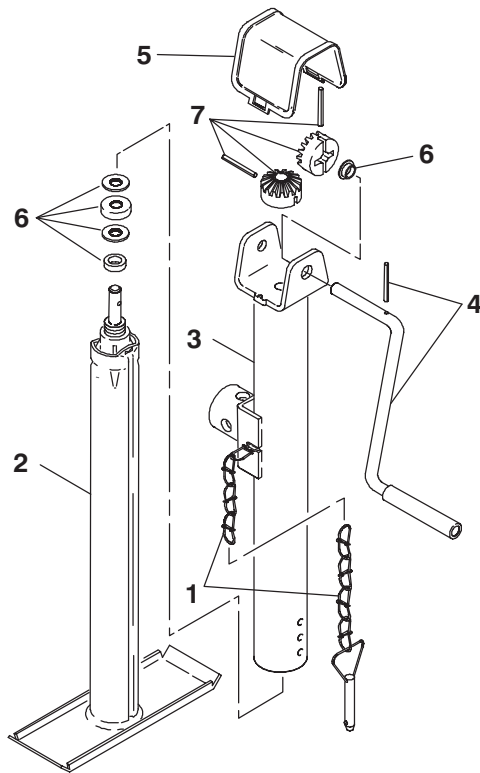
Hitchjack - Fulton



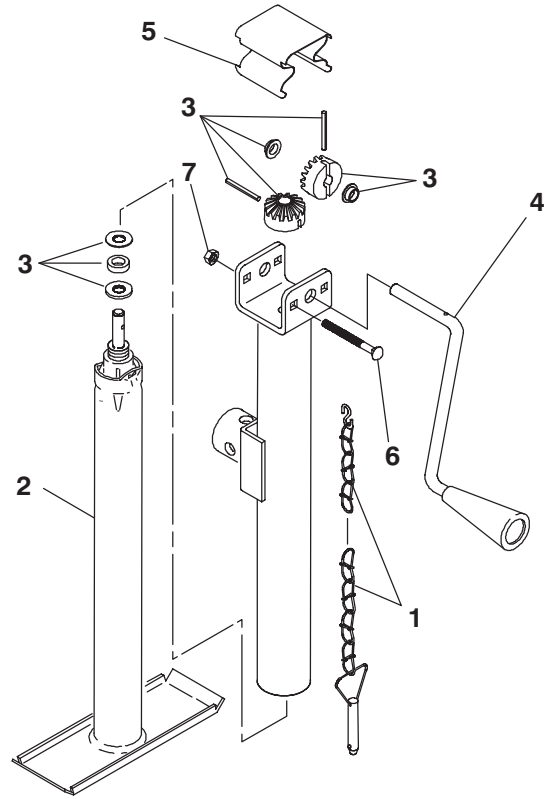
Ref. No.	Part No.	Description	Qty. Req.	Ref. No.	Part No.	Description	Qty. Req.
	143471	HITCHJACK - FULTON	1	04	143602	KIT/GEAR	1
		CONSISTS OF:		05	143600	SUPPORT/PLATE	1
01	143597	KIT/JACK HANDLE	1	06	143598	CAP/TUBE	1
02	143601	KIT/PIN & CHAIN	1	07	113026	TFS #8-32X3/8	1
03	143610	KIT/BEARING	1				

MF8210 - COMPONENTS, HITCHJACK (EARLY STYLE)

081464 Hitchjack – Wesbar



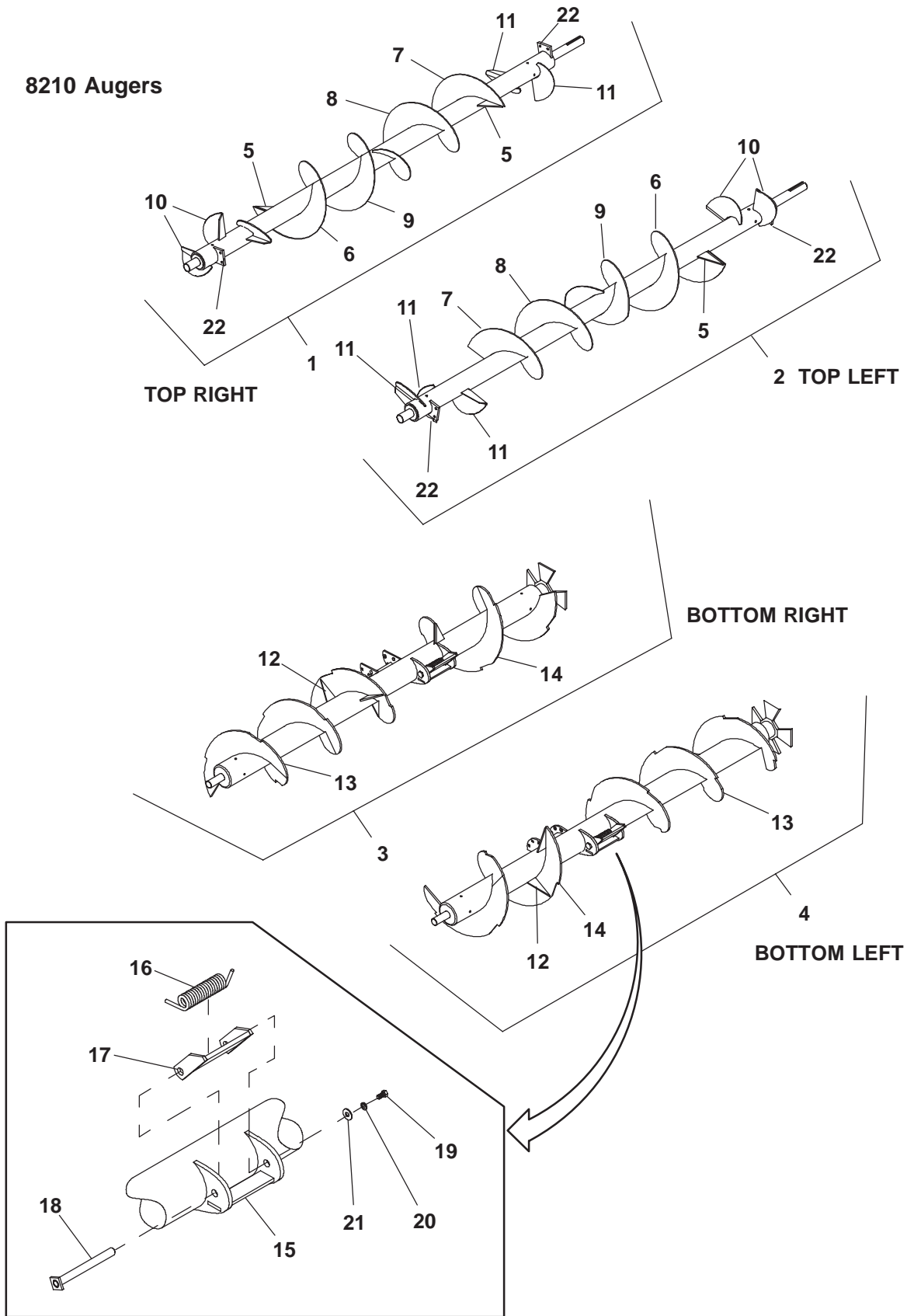
081464 Hitchjack – Hammerblow



Ref. No.	Part No.	Description	Qty. Req.
	081464	JACK/ASSY – WESBAR	1
		CONSISTS OF:	
01	061276	PIN & CHAIN	1
02	081462	TUBE/INNER ASSY	1
03	081465	TUBE/OUTER ASSY	1
04	126735	CRANK/JACK	1
05	077838	CAP/TOP	1
06	094283	KIT/INTERNAL PARTS	1
07	077836	KIT/GEAR	1

Ref. No.	Part No.	Description	Qty. Req.
	081464	JACK/ASSY – HAMMERBLOW	1
		CONSISTS OF:	
01	061276	PIN & CHAIN	1
02	117915	SW INNER TUBE ASSY 13.5	1
03	117916	SW FINAL ASSY KIT #5	1
04	117917	CRANK ASSY SW	1
05	117918	GEAR BOX COVER	1
06	652142	CB 1/4X3	1
07	653005	HN 1/4	1

MF8210 - COMPONENTS, AUGERS



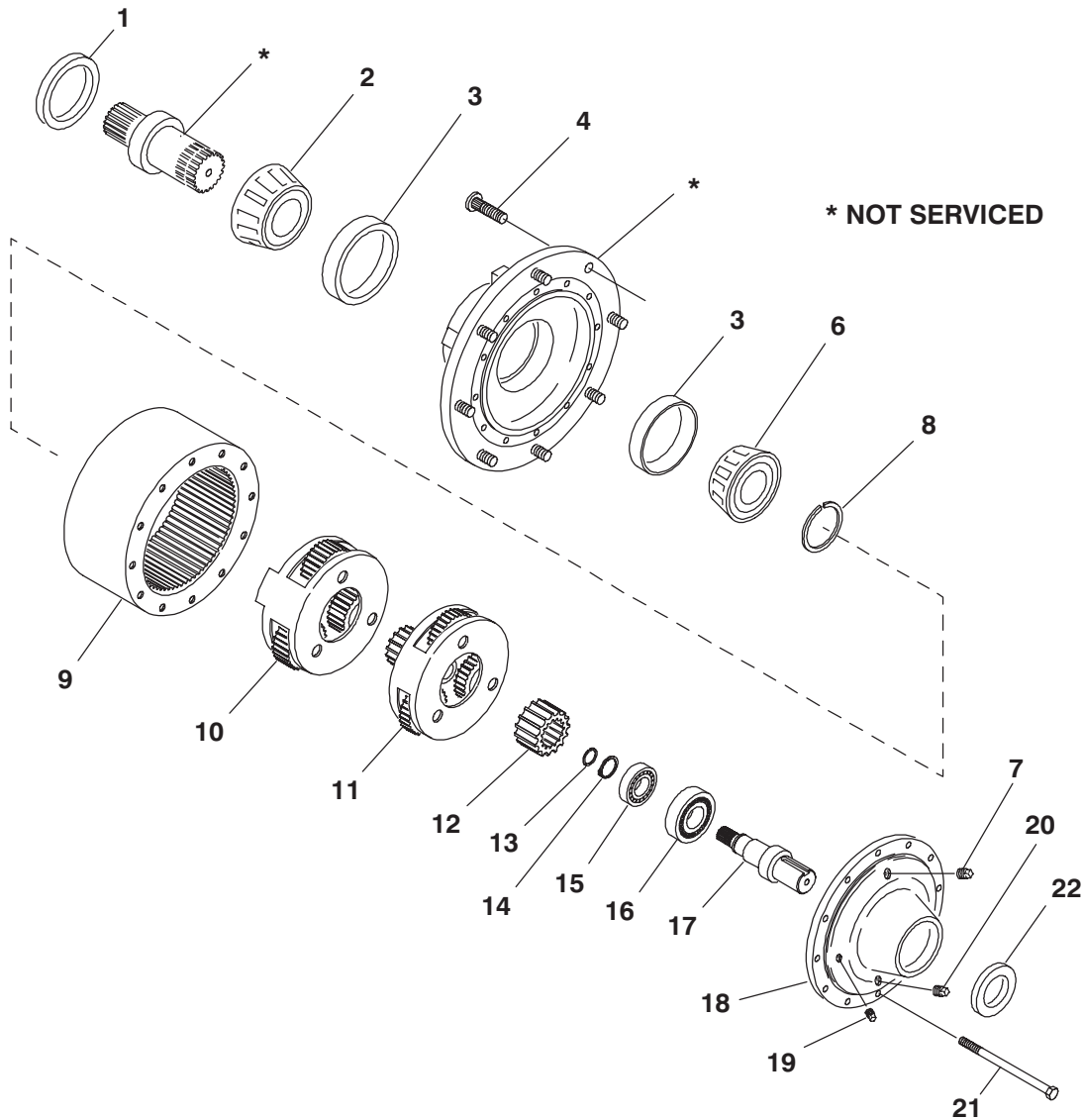
MF8210 - COMPONENTS, AUGERS

Ref. No.	Part No.	Description	Qty. Req.	Ref. No.	Part No.	Description	Qty. Req.
01	119957	AUGER/TOP ASSY RT	1	13	119971 _a	FLIGHT/NOTCHED 3/8 RT	
02	119958	AUGER/TOP ASSY LT	1			(BOTTOM RT OR LT AUGER)	4
03	119959	AUGER/BOTTOM RT	1	14	119972 _a	FLIGHT/NOTCHED 3/8 LH	
04	119960	AUGER/BOTTOM LT	1			(BOTTOM RT OR LT AUGER)	3
05	099073	GUSSET (TOP RT OR LT AUGER)	2	15	119975	MOUNT ASSY	
06	099076 _a	FLIGHT/SECTION 1/4 RH (TOP RT OR LT AUGER)	1			(BOTTOM RT OR LT AUGER)	2
07	099077 _a	FLIGHT/SECTION 1/4 LH (TOP RT OR LT AUGER)	1	16	119543 _b	SPRING/TORSION	2
08	119961	FLIGHT/TRIMMED 1/4 RH (TOP RT OR LT AUGER)	1	17	142346 _b	PADDLE/ASSY	2
09	119962	FLIGHT/TRIMMED 1/4 LH (TOP RT OR LT AUGER)	1	18	119791 _b	SHAFT/PIVOT	2
10	119963	PADDLE/RH (TOP RT AUGER)	3	19	650494 _b	CS 1/2X1	2
	119963	PADDLE/RH (TOP LT AUGER)	2	20	654030 _b	LW 1/2	2
11	119964	PADDLE/LH (TOP RT AUGER)	2	21	654009 _b	FW 1/2	2
	119964	PADDLE/LH (TOP LT AUGER)	3	22	119965	BRACKET/PADDLE	2
12	119965	GUSSET (BOTTOM RT OR LT AUGER)	6				

- a) The Flighting Section profile and length may have to be trimmed to be an exact replacement in the location being repaired. Use the old Flighting as a template.
- b) "Qty. Req." is the quantity required to repair one Bottom Auger.

MF8210 - COMPONENTS, PLANETARY GEARBOX

119727 Planetary Gearbox

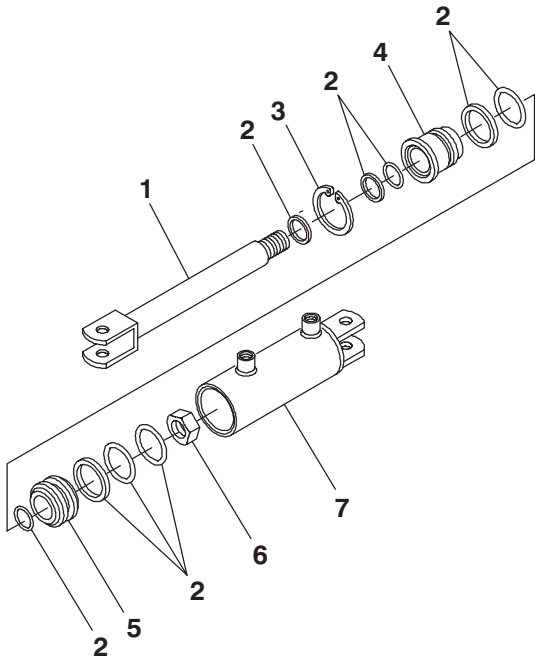


Ref. No.	Part No.	Description	Qty. Req.	Ref. No.	Part No.	Description	Qty. Req.
	119727	PLANETARY/MODEL 6	1	13	120793	RING/RETAINING	1
		CONSISTS OF:		14	120792	RING/RETAINING	1
01	089176	SEAL/OIL	1	15	120794	BEARING/CYL. ROLLER	1
02	010-32292	BEARING/CONE	1	16	120795	BEARING/CYL. ROLLER	1
03	078946	BEARING/CUP	2	17	119729	SHAFT/INPUT	1
04	041879	BOLT/WHEEL	9	18	120802	COVER/SHAFT INPUT	1
06	078945	BEARING/CONE	1	19	660000	PLUG/PIPE 1/8 SQ HD	1
07	660004	PLUG/PIPE 1/2	1	20	057569	PLUG/MAGNETIC PIPE	1
08	092943 ^a	KIT/THRUST WASHER RET	1	21	081362	CS 5/16X1-1/2	8
09	080300	GEAR/RING	1	22	120796	SEAL/OIL	1
10	080297	CARRIER/SECONDARY ASSY	1				
11	080296	CARRIER/PRIMARY ASSY	1				
12	120803	GEAR/SUN	1				

a) Select the widest Snap Ring that matches groove in Shaft.

MF8210 - COMPONENTS, HYDRAULIC CYLINDER

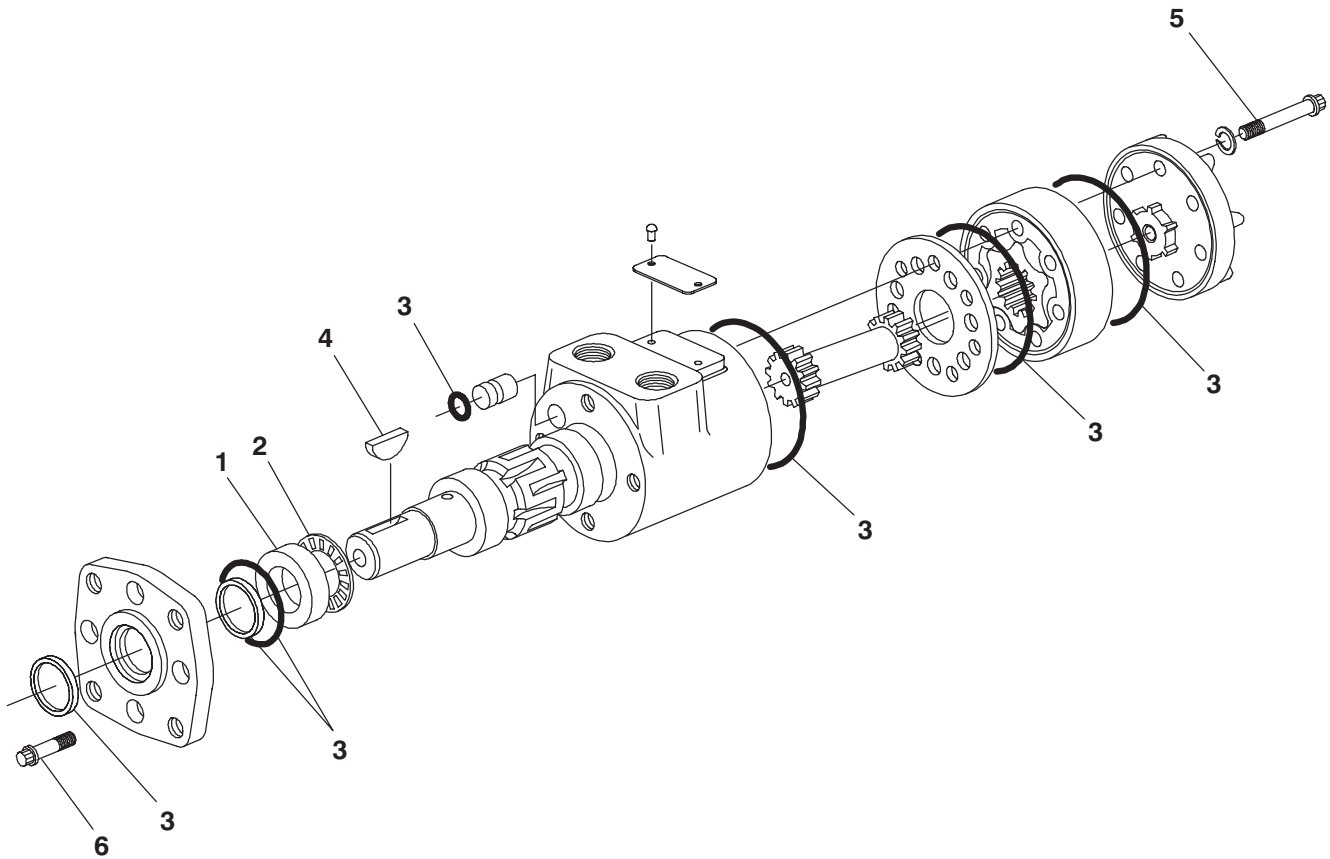
091882 – 2X16 Hydraulic Cylinder



Ref. No.	Part No.	Description	Qty. Req.
	091882	CYLINDER/HYDRAULIC	1
		CONSISTS OF:	
01	094291	SHAFT & CLEVIS	1
02	089693	KIT/SEAL	1
03	089689	RING/SNAP	1
04	089691	HEAD/HYD CYL	1
05	089690	PISTON/HYD CYL	1
06	073788	NUT/LOCK	1
07	094290	BARREL/HYD CYLINDER	1

MF8210 - COMPONENTS, HYDRAULIC MOTOR

065500 Hydraulic Motor

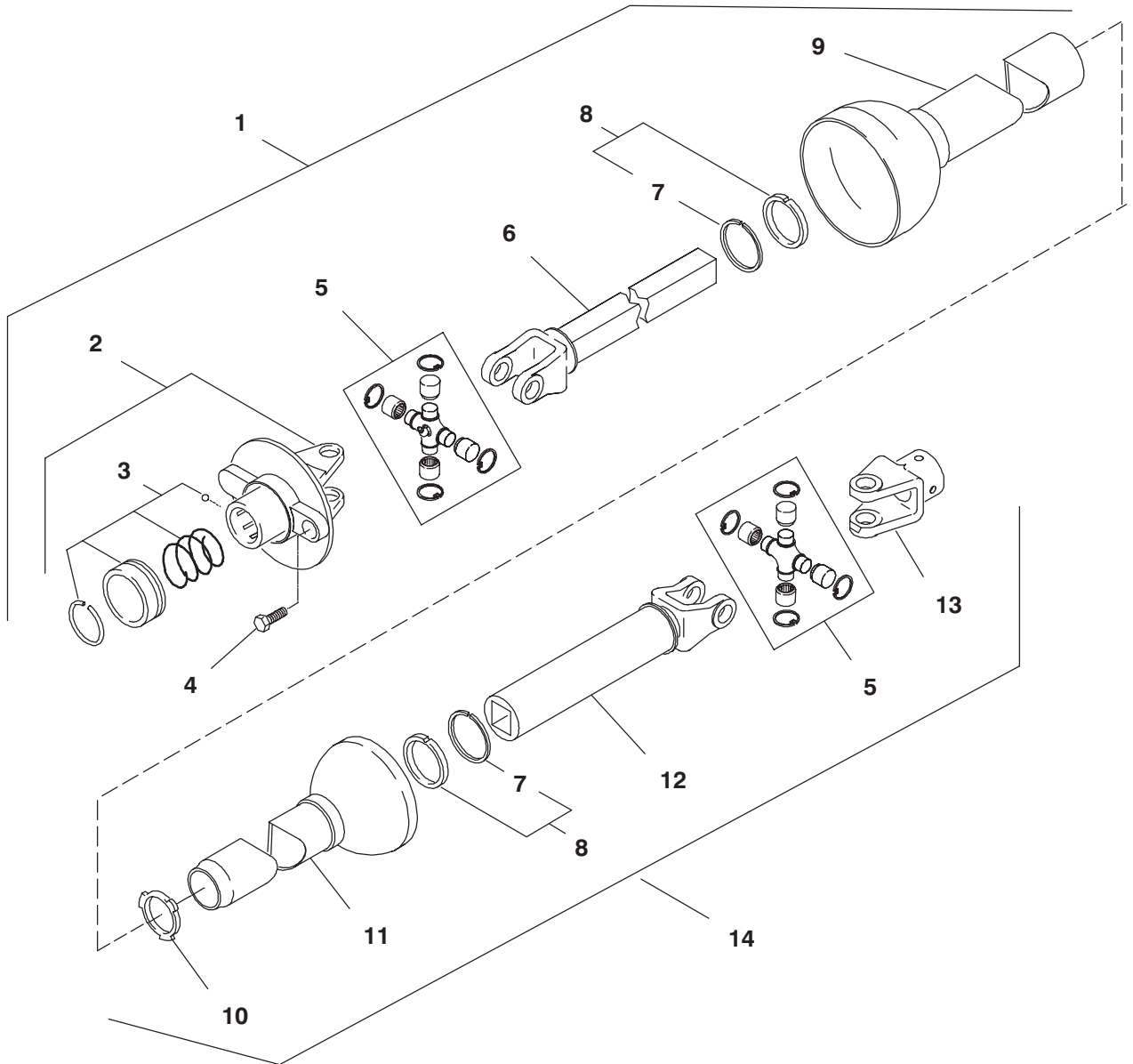


Ref. No.	Part No.	Description	Qty. Req.	Ref. No.	Part No.	Description	Qty. Req.
	065500	MOTOR/HYDRAULIC	1	04	650513	KEY/WOODRUFF 1/4X1	1
		CONSISTS OF:		05	650373	12-PT CS 5/16X1-3/4 NF	7
01	049498	RACE/BEARING	1	06	650927	12-PT CS 5/16X7/8 NF	4
02	049499	WASHER/THRUST	1				
03	093519 _a	KIT/SEAL	1				

a) The Seal Kit includes all required Seals, O-Rings, sealant and an instruction sheet.

MF8210 - COMPONENTS, UNIVERSAL DRIVE

540 RPM PTO Assembly

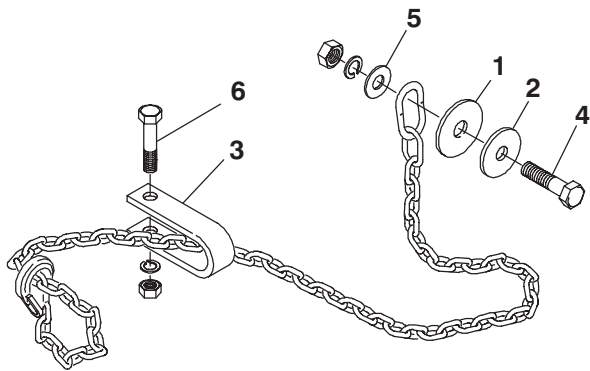


Ref. No.	Part No.	Description	Qty. Req.	Ref. No.	Part No.	Description	Qty. Req.
01	092687	PTO SHAFT/FRONT HALF	1	08	095130	KIT/REPAIR	2
02	092709	BALL SHEAR ASSY YOKE	1	09	092710	GUARD/OUTER (FRONT)	1
	650557	CS 3/8X1/2	1	10	510215	CENTRALIZER/NYLON	1
03	086925	KIT/SLIDE LOCK REPAIR	1	11	092712	GUARD/INNER (REAR)	1
04	069066 _a	SHEAR BOLT 1/4X1 GR5 (LN)	1	12	092713 _b	JOINT W/SQ. TUBE	1
05	510114	KIT/CROSS (INCL 570009 GREASE FITTING)	2	13	092714	YOKE/IMPLEMENT END	1
06	092711	JOINT W/SQ SHAFT	1	14	092688	PTO SHAFT/REAR HALF	1
07	510100	RETAINER/BEARING	2				

a) For replacement Shear Bolt, order Shear Bolt Kit 904400 which consists of 8 Shear Bolts and Lock Nuts.
b) Includes 143007 Danger Decal.

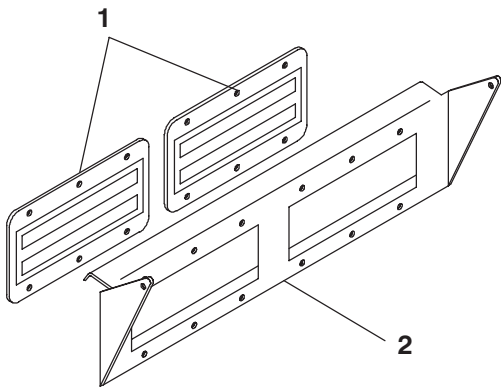
MF8210 - ACCESSORIES

803098 Safety Tow Chain 10 Ton



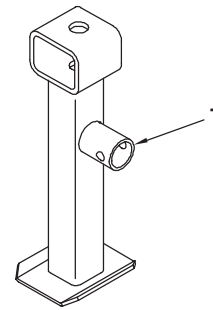
Ref. No.	Part No.	Description	Qty. Req.
	803098	CHAIN/SAFETY TOW 10 TON	1
CONSISTS OF:			
01	043912	WASHER	1
02	069076	WASHER	1
03	080894	CLEVIS	1
04	650172	CS 3/4X3-1/4 (N,L)	1
05	650695	CS 5/8X3-1/2 (N,L)	1
06	654014	WASHER/PLAIN WIDE 3/4	1

804568 Magnet Assembly



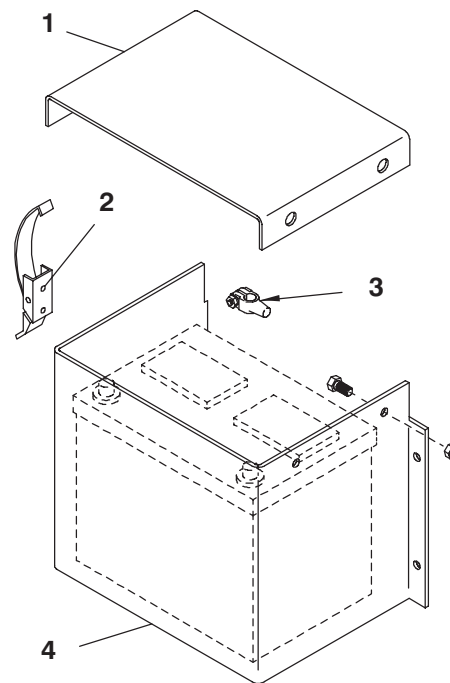
Ref. No.	Part No.	Description	Qty. Req.
	804568	MAGNET ASSY	1
CONSISTS OF:			
01	092693	MAGNET - CONVEYOR	2
	650945	RHMS 1/4X3/4 (N,L)	12
02	092692	MAGNET PLATE	1
	650490	CS 3/8X1 (LN,2P)	2

805436 3-Point Scale Stand



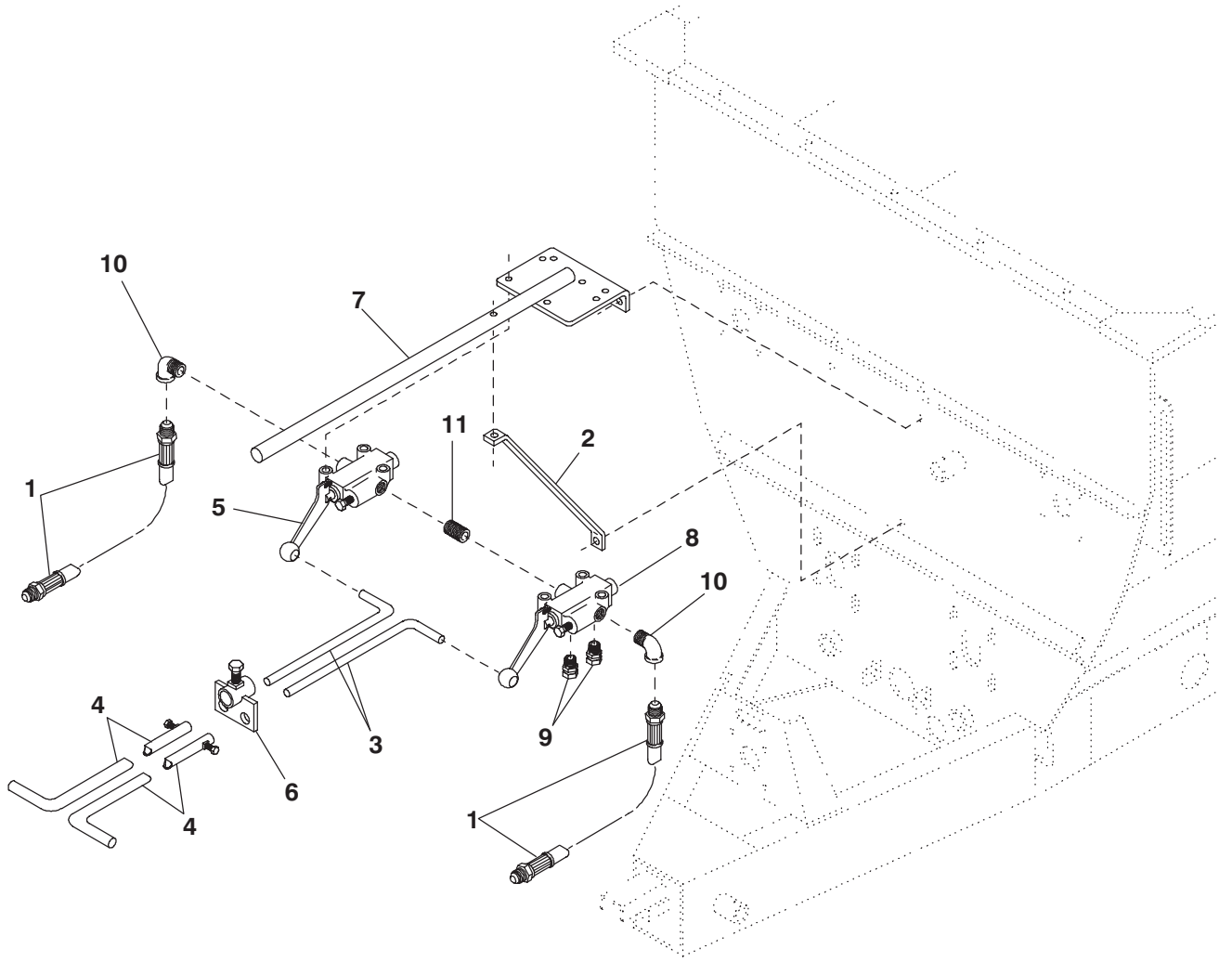
Ref. No.	Part No.	Description	Qty. Req.
	805436	STAND/MF 3-POINT SCALE	1
CONSISTS OF:			
01	094135	STAND/3-POINT SCALE ASSY	1

804569 Battery Box



Ref. No.	Part No.	Description	Qty. Req.
	804569	BATTERY BOX	1
CONSISTS OF:			
01	092707	BATTERY BOX COVER	1
	650487	CS 5/16X1 (LN)	2
02	092708	LATCH/OVER CENTER	1
	650387	RHMS #10-32X1/2 (N,L)	2
03	068244	BATTERY CLAMP	2
04	092706	BATTERY BOX	1
	650490	CS 3/8X1 (N,L)	4

804570 Single Valve Conversion Kit

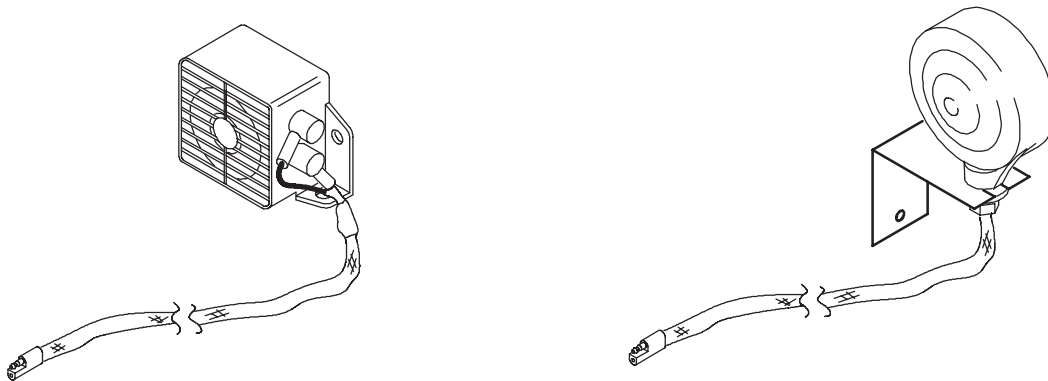


Ref. No.	Part No.	Description	Qty. Req.	Ref. No.	Part No.	Description	Qty. Req.
	804570	SINGLE VALVE CONVERSION	1		650490	CS 3/8X1 (N,L)	3
		CONSISTS OF:		08	110853 _b	VALVE/DETENT W/3 POSITIONS	1
01	067848	HOSE/ASSY (96" LONG)	2		650579	CS 3/8X1-3/4 (N,L,P)	3
02	092323	BRACE/INDICATOR	1	09	580058	UNION/HYD FITTING	2
	650528	CS 3/8X2 (N,L)	1	10	660014	ELBOW/PIPE REDUCING	2
03	092700	HANDLE/VALVE	2	11	660058	NIPPLE/CLOSE 3/4 NPT	1
	655006	PIN/COTTER 1/8X1	2	12	091442 _c	DECAL/DANGER ROTATING AUGER	1
04	092701	HANDLE/CONSOLE	2	13	093653 _c	DECAL/WARNING ROT DR LN	1
05	092702 _a	HYDRAULIC VALVE	1				
	650579	CS 3/8X1-3/4 (N,L,P)	3				
06	092704	HANGER	1				
	650485	CS 5/16X5/8	1				
07	092705	VALVE MOUNT	1				

a) For repair of Valve Handle, order 119817 Handle, 119818 Pin Kit and 119819 Handle Bracket.
 b) 110853 is NOT stocked as a repair part. To repair Valve, order 092702 Valve (Ref. 05) and 092703 Detent Kit separately. For repair of Valve Handle, see NOTE a, above.
 c) Included with the Kit but NOT shown; refer to Decal Locations information for proper location.

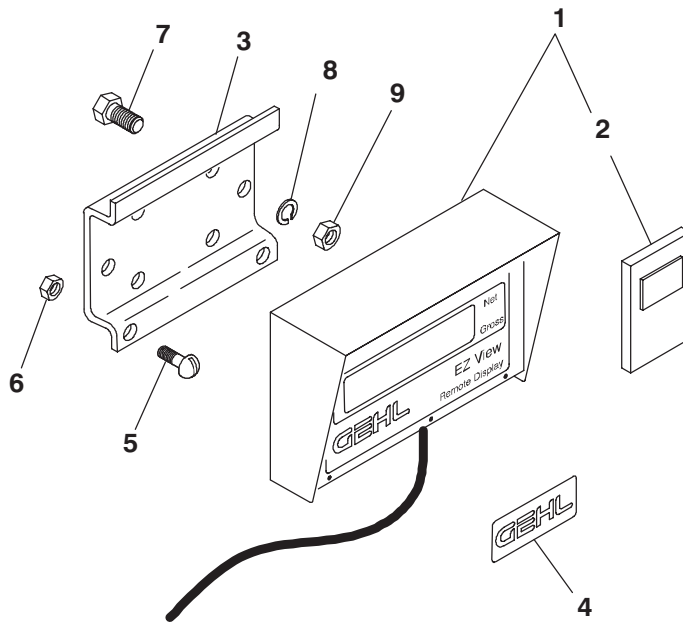
MF8210 - ACCESSORIES

Alarm Units for Model 2100 or 3200 Scale Indicators



Ref. No.	Part No.	Description	Qty. Req.	Ref. No.	Part No.	Description	Qty. Req.
	804777	AUDIBLE ALARM	1		804778	VISUAL ALARM	1
		CONSISTS OF:				CONSISTS OF:	
01	093068	HORN/DIGITAL UNIT	1	01	093067	LIGHT/DIGITAL UNIT	1

806326 Remote Scale Indicator (Requires Model 3200 Scale)



Ref. No.	Part No.	Description	Qty. Req.	Ref. No.	Part No.	Description	Qty. Req.
	806326	REMOTE INDICATOR T/R KIT	1	05	650815	RHMS#1024-3/4	2
		CONSISTS OF:		06	650550	HN#1024	2
01	118241	REMOTE INDICATOR T/R	1	Customer Supplied Hardware			
02	092988	TRANSMITTER/WIRELESS	1	07	650490	CS 3/8X1	4
03	092684	BRACKET/INDICATOR	1	08	654026	LW 3/8	4
04	118242	DECAL/GEHL	1	09	653010	HN 3/8	4

MF8210 - NUMERICAL INDEX

Part No.	Page No.	Ref. No.	Part No.	Page No.	Ref. No.	Part No.	Page No.	Ref. No.	Part No.	Page No.	Ref. No.
17H349	13	20	067457	23	37	081464	27	00	092323	35	02
B11296	13	01	067769	23	35	081465	27	03	092600	21	10
B11433A	13	25	067823	09	60	083100	09	25	092600	23	23
006989	15	01	067848	35	01	084799	15	11	092601	21	09
009476	07	27	067880	19	26	086925	33	03	092601	23	18
009476	15	10	068244	34	03	089176	30	01	092602	21	01
009477	15	08	068960	17	16	089689	31	03	092602	23	22
041492	13	16	069066	07	03	089690	31	05	092603	21	02
041879	30	04	069066	33	04	089691	31	04	092603	23	21
042903	21	08	069076	34	02	089693	31	02	092604	21	13
042903	23	08	069129	09	57	089867	11	15	092605	21	12
043912	34	01	069387	07	30	089867	15	18	092606	21	14
045581	09	36	069793	13	27	091438	02	06	092607	21	18
047269	17	11	070634	16	09	091442	02	07	092608	21	17
048721	15	21	070634	17	06	091442	35	12	092608	23	14
048967	23	40	070648	17	07	091444	02	08	092610	21	05
049498	32	01	071381	23	01	091446	02	09	092610	23	20
049499	32	02	071381	23	07	091727	02	10	092611	21	11
053961	15	30	071700	07	04	091882	19	11	092615	23	09
055342	09	45	071701	07	26	091882	23	32	092616	23	11
056080	19	01	071701	15	04	091882	31	00	092617	23	27
056080	21	20	071701	19	06	091883	15	22	092618	23	25
056080	23	41	071703	09	14	091886	21	15	092619	21	21
057569	30	20	071706	09	01	091886	23	16	092619	23	24
057650	19	02	071706	09	44	091887	09	03	092620	23	17
057653	19	03	071706	11	01	091889	19	08	092621	23	02
057864	19	04	071706	19	07	091892	21	03	092622	23	03
058421	09	34	071709	13	02	091892	23	19	092623	23	12
058615	25	01	071709	15	05	091893	21	04	092624	23	31
058654	21	23	073788	31	06	091893	23	10	092625	23	28
059272	07	22	074091	25	02	091893	23	10	092626	23	01
060510	02	03	077836	27	07	091894	19	12	092627	23	26
060511	02	04	077838	27	05	091895	19	09	092628	23	04
061276	27	01	078657	09	27	091897	21	25	092629	23	05
061276	27	01	078945	30	06	091899	17	23	092630	23	30
061858	13	22	078946	30	03	091902	13	03	092631	23	29
062404	23	36	079152	09	28	091902	15	20	092632	23	39
062405	23	38	079878	16	06	091906	15	13	092634	23	13
062889	19	05	080247	02	05	091907	07	02	092640	11	03
063590	13	28	080296	30	11	091908	21	19	092642	19	10
064260	13	24	080297	30	10	091908	23	33	092643	13	18
065500	21	22	080300	30	09	091913	11	02	092645	19	24
065500	23	34	080894	34	03	091914	11	16	092646	09	09
065500	32	00	081362	34	03	091914	15	19	092647	13	06
067179	09	13	081462	30	21	091923	21	07	092651	07	10
067457	21	24	081464	27	02	091923	23	07	092654	07	05
				09	22	091947	07	08	092660	15	09

MF8210 - NUMERICAL INDEX

Part No.	Page No.	Ref. No.	Part No.	Page No.	Ref. No.	Part No.	Page No.	Ref. No.	Part No.	Page No.	Ref. No.
092665	17	24	093519	32	03	119532	25	04	120793	30	13
092667	16	14	093653	02	19	119533	25	05	120794	30	15
092672	09	02	093653	35	13	119543	29	16	120795	30	16
092674	15	17	093807	09	16	119660	02	23	120796	30	22
092675	09	15	094087	19	16	119662	25	03	120797	16	01
092680	09	05	094135	34	01	119664	17	13	120798	17	10
092683	07	11	094283	27	06	119665	25	06	120802	30	18
092684	09	49	094290	31	07	119666	25	07	120803	30	12
092684	36	03	094291	31	01	119710	16	03	120814	09	56
092687	07	23	094951	02	20	119727	15	16	122617	02	24
092687	33	01	094963	02	21	119727	30	00	122736	02	25
092688	07	24	095114	11	14	119729	30	17	125946	25	08
092688	33	14	095130	33	08	119957	11	05	126735	27	04
092692	34	02	099073	29	05	119957	29	01	126757	02	26
092693	34	01	099076	29	06	119958	11	06	141333	09	61
092700	35	03	099077	29	07	119958	29	02	142346	29	17
092701	35	04	110790	07	01	119959	11	12	143007	02	28
092702	35	05	110790	15	06	119959	29	03	143471	09	22
092704	35	06	110853	35	08	119960	11	13	143471	26	00
092705	35	07	111421	17	18	119960	29	04	143597	26	01
092706	34	04	112443	09	35	119961	29	08	143598	26	06
092707	34	01	112444	09	35	119962	29	09	143600	26	05
092708	34	02	112518	09	52	119963	29	10	143601	26	02
092709	33	02	112519	09	52	119963	29	10	143602	26	04
092710	33	09	112520	09	52	119964	29	11	143610	26	03
092711	33	06	112886	25	10	119964	29	11	144457	16	02
092712	33	11	112917	25	11	119965	29	12	144618	09	05
092713	33	12	113012	19	13	119965	29	22	145216	02	01
092714	33	13	113013	19	14	119966	11	07	145217	02	02
092779	21	16	113026	26	07	119791	29	18	145234	02	27
092779	23	15	113109	19	15	119971	29	13	145562	09	62
092797	09	37	117004	13	10	119972	29	14	145775	07	28
092798	09	38	117006	13	04	119975	29	15	170048	09	52
092943	30	08	117010	11	04	119981	15	14	170049	09	52
092988	36	02	117011	13	26	119982	15	15	510100	33	07
093020	02	11	117020	13	08	119993	13	05	510114	15	34
093030	09	50	117915	27	02	119995	13	11	510114	33	05
093067	36	01	117916	27	03	119999	17	04	510215	33	10
093068	36	01	117917	27	04	120286	17	26	520054	09	29
093366	02	12	117918	27	05	120291	17	03	520084	21	06
093367	02	13	118241	36	01	120293	17	19	520084	23	06
093369	02	14	118242	36	04	120294	17	20	520153	07	29
093373	02	15	118925	19	17	120300	09	04	520201	09	30
093457	02	16	118928	19	18	120301	02	22	520213	09	26
093466	02	17	118933	19	19	120303	16	02	520214	09	24
093489	02	18	119493	19	25	120792	30	14	570006	07	14
									570009	21	07

MF8210 - NUMERICAL INDEX

Part No.	Page No.	Ref. No.	Part No.	Page No.	Ref. No.	Part No.	Page No.	Ref. No.	Part No.	Page No.	Ref. No.
570009	23	07	650495	19	21	650790	09	20	654009	29	21
570014	21	05	650498	09	07	650810	13	07	654012	15	29
570014	23	27	650513	21	26	650812	16	07	654014	13	09
580058	35	09	650513	23	42	650813	16	05	654014	16	11
600798	09	51	650513	23	10	650815	09	21	654014	34	06
604328	09	23	650513	23	33	650815	09	55	654015	09	31
613477	09	53	650513	23	34	650815	36	05	654022	09	47
650060	21	21	650513	32	04	650833	15	03	654022	17	15
650060	23	09	650528	35	02	650927	32	06	654022	19	29
650172	34	04	650533	21	07	650945	34	01	654024	13	21
650201	21	19	650533	23	07	650969	17	12	654026	07	21
650201	23	33	650533	23	12	651107	15	25	654026	09	40
650203	15	02	650542	09	46	651148	07	15	654026	13	29
650212	15	12	650548	17	17	651167	09	63	654026	17	28
650214	15	07	650549	09	17	651273	17	02	654026	36	08
650373	32	05	650549	17	09	651319	16	10	654030	07	13
650387	34	02	650550	09	18	651320	11	09	654030	15	31
650426	23	40	650550	09	54	651320	15	27	654030	29	20
650448	07	17	650550	17	08	651324	15	26	654032	11	11
650448	21	01	650550	36	06	652142	27	06	654034	09	12
650448	21	02	650551	23	30	653005	09	48	654034	16	12
650448	23	21	650557	33	00	653005	17	14	654056	15	32
650448	23	22	650568	13	12	653005	19	27	655006	35	03
650453	07	07	650569	07	06	653005	27	07	655016	17	01
650453	09	06	650579	35	05	653007	13	17	655020	09	64
650453	11	08	650579	35	08	653010	07	19	655020	13	23
650485	35	06	650584	09	19	653010	09	41	655020	19	23
650487	13	13	650584	17	25	653010	17	29	655022	23	03
650487	19	20	650590	17	22	653010	25	09	655046	09	33
650487	21	13	650594	23	28	653010	36	09	660000	30	19
650487	34	01	650627	16	04	653018	07	09	660004	15	33
650488	07	18	650644	09	42	653018	15	28	660004	30	07
650490	09	39	650647	15	23	653021	11	10	660014	35	10
650490	13	30	650692	13	14	653026	09	10	660058	35	11
650490	21	12	650692	23	26	653026	16	13	803098	34	00
650490	23	04	650695	34	05	653102	09	32	804568	34	00
650490	23	05	650704	17	27	654002	07	20	804569	34	00
650490	23	25	650709	09	08	654002	19	28	804570	35	00
650490	23	34	650745	13	15	654004	13	19	804777	36	00
650490	34	02	650758	16	08	654006	07	16	804778	36	00
650490	34	04	650758	17	21	654009	07	12	805436	34	00
650490	35	07	650771	17	05	654009	09	11	806326	36	00
650490	36	07	650774	15	24	654009	09	43	010-32292	30	02
650494	29	19	650784	07	25	654009	19	22			

Index

A

Abbreviations List, 2
Accessories
 3-Point Scale Stand, 34
 Battery Box, 34
 Magnet Assembly, 34
 Remote Scale Indicator Kit, 36
 Safety Tow Chain, 34
 Single Valve Conversion Kit, 35
Alarms (audible and visual), 36
Auger Bearings, 10
Auger Drive Cover, 17
Auger Drives, 12
Augers, 10
 Components, 28
Axle, 8

B

Battery Box, 34
Bearings
 Chaincase, 15
 Drive Line, 7
 Wheel, 9

C

Chain, Safety Tow, 34
Chaincase, 14
 Mounting & Cover, 16
Components, Planetary Gearbox, 30
Cover
 Auger Drive, 17
 Chaincase, 16
Cylinder Assembly, Door, 19

D

Decal Locations, 2-4
Decals
 Application, 2

 Set numbers, 2
Discharge Conveyor
 One-Piece, 20-21
 Two-Piece, 22-23
Discharge Door & Hydraulics, 18

G

Gearbox, 30
 Assembly, 15

H

Hitch, 8
Hitchjack
 Fulton, 26
 Hammerblow, 27
 Wesbar, 27
Hub, Axle, 9
Hydraulic Conveyor Motor, 32
Hydraulic Cylinders, 31

I

Indicator. *See* Scales
Introduction, 2

J

Jack, Assembly, 9

K

Kit
 Cylinder seals, 31
 Hyd. Motor seals, 32
 Jack repair, 27
 PTO Shields repair, 33
 PTO Slide Lock repair, 33
 Single Valve conversion, 35
 U-Joint cross repair, 15
 PTO, 33

M

Magnet, 34
Main Drive, 6

P

Paint Notice, 2
Planetary Gearbox. *See* Gearbox
PTO, 7
 Components, 33

S

Scale, Remote Indicator, 36
Scale Stand, 34
Scales, 8
Shear Bolts, 7
Shield. *See* Cover
Spindle, Weighbar, 9

T

Torque Specification Chart, Inside
 Rear Cover
Transport Lights, 24
Trough Liner, 11

U

U-Joint, PTO, 33
U-Joint, rear, 15

V

Valve, Relief, 19






W

Weighbars, 8
Wheel Hubs, 8
Wheels, 8

TORQUE SPECIFICATIONS

NOTE: Use these torque values when tightening **GEHL** hardware (excluding: Locknuts and Self-tapping, Thread Forming and Sheet Metal Screws) unless specified otherwise.

All torque values are in Lb-Ft except those marked with an * which are Lb-In
(For metric torque value Nm, multiply Lb-Ft value by 1.355 or Lb-In value by 0.113)

Unified National Thread	Grade 2 		Grade 5 		Grade 8 	
	Dry	Lubed	Dry	Lubed	Dry	Lubed
8-32	19*	14*	30*	22*	41*	31*
8-36	20*	15*	31*	23*	43*	32*
10-24	27*	21*	43*	32*	60*	45*
10-32	31*	23*	49*	36*	68*	51*
1/4-20	66*	50*	9	75*	12	9
1/4-28	76*	56*	10	86*	14	10
5/16-18	11	9	17	13	25	18
5/16-24	12		19	14		20
3/8-16	20	15	30	23	45	35
3/8-24	23	17	35	25	50	
7/16-14	32	24	50	35	70	55
7/16-20	36	27	55	40	80	60
1/2-13	50	35	75	55	110	80
1/2-20	55	40	90	65	120	90
9/16-12	70	55	110	80	150	110
9/16-18	80	60	120	90	170	130
5/8-11	100	75	150	110	220	170
5/8-18	110	85	180	130	240	180
3/4-10	175	130	260	200	380	280
3/4-16	200	150	300	220	420	320
7/8-9	170	125	430	320	600	460
7/8-14	180	140	470	360	660	500
1-8	250	190	640	480	900	680
1-14	270	210	710	530	1000	740
Metric Course Thread	Grade 8.8 		Grade 10.9 		Grade 12.9 	
	Dry	Lubed	Dry	Lubed	Dry	Lubed
M6-1	8	6	11	8	13.5	10
M8-1.25	19	14	27	20	32.5	24
M10-1.5	37.5	28	53	39	64	47
M12-1.75	65	48	91.5	67.5	111.5	82
M14-2	103.5	76.5	145.5	108	176.5	131
M16-2	158.5	117.5	223.5	165.5	271	200

GEHL®

Gehl Company 143 Water Street, P.O. Box 179, West Bend, WI 53095-0179 U.S.A.