

Form No.
908181
Replaces
908036

AL20DX

Articulated Loader



PARTS MANUAL

GEHL® CONSTRUCTION

Introduction

When ordering service parts, specify the correct part number, full description, quantity required, the unit model number and serial number. For your safety and continued proper operation, use only genuine GEHL service parts.

The model and serial number for this unit are on a tag located on a panel behind the right front wheel.

“Right” and “left” are determined from a position sitting on the seat and facing forward. From this position, the rearward propulsion control foot pedal is on the “left” and the forward propulsion control foot pedal is on the “right”.

GEHL® Company reserves the right to make changes or improvements in the design or construction of any part of the unit without incurring the obligation to install such changes on any previously delivered units.

NOTE: *On original tire replacement, company policy prohibits the sale of replacement tires for all GEHL machinery. Replacement Wheel Sets are available and tire size information is called out with the Wheel Sets to facilitate replacement tire selection. ALL REPLACEMENT TIRES MUST BE PURCHASED LOCALLY.*

Refer to the abbreviations table located on this page for the various fastener descriptions. Standard attaching hardware torque values are also provided on the inside back cover.

In the exploded view parts list, Reference Numbers may have additional information following the Reference Number.

Unless otherwise specified, all Cap Screws or Bolts are Grade 5, cadmium or zinc plated; Hexagon Nuts for Grade 5 Screws or Bolts are Grade B; Hexagon Nuts for other Screws or Bolts are Grade A.

NOTE: *The following abbreviations may be used herein:*

CP	– Cotter Pin
CS	– Cap Screw (Hexagon Head)
FHCS	– Flat Head Cap Screw
HN	– Hex Nut
LN	– Lock Nut
LT	– Left Hand
M	– Metric
MM/mm	– Millimeter
RT	– Right

TABLE OF CONTENTS

Introduction	Inside Front Cover
Table Of Contents	1
Decal Locations	2-3
Extendable Boom	4
Standard Boom	5
Front Chassis	6-7
Rear Chassis	8-9
Engine	10-11
Parking Brake	12
Drive Pedal	13
Transmission	14
Hydraulic Hoses	15
Control Valve & Hose Assembly	16-17
Hydraulic Oil Cooler	18
Center Pivot, ROPS & FOPS	19
Alphabetical Index	20
Numerical Index	21
Standard Hardware Torque Specifications	Inside Back Cover

DECAL LOCATIONS

GENERAL INFORMATION

Decal location information is provided to assist in the proper selection and application of new decals, in the event the original decals become damaged or the machine is repainted. Refer to the listing for the illustration reference number, part number, description and quantity of each decal provided in the Kit. Refer to the appropriate illustrations for replacement locations.

To insure proper selection of the correct replacement decals, compare all of the various closeup location drawings to your machine before starting to refinish the unit. Then circle each shown decal (applicable to your machine) while checking off its part number in the listing. After you have verified all the decals needed for replacement, place any extra unnecessary decals aside for disposal.

NOTE: Refer to the *SAFETY Chapter of the Operator's Manual for the specific information provided on all of the various Safety Decals furnished in the Decal Kit(s).*

NEW DECAL APPLICATION

Surfaces **MUST** be free from dirt, dust, grease and other foreign material before applying the new Decal. To apply, remove the smaller portion of the decal backing paper and apply this part of the exposed adhesive backing to the clean surface while maintaining proper position and alignment. Peel the other portion of the backing paper off slowly while applying hand pressure to smooth out the Decal surface.



CAUTION

ALWAYS follow safety precautions on decals. Replace the decals if they are damaged, or if the unit is repainted. If repainting, **BE SURE** all applicable decals are affixed to your unit.

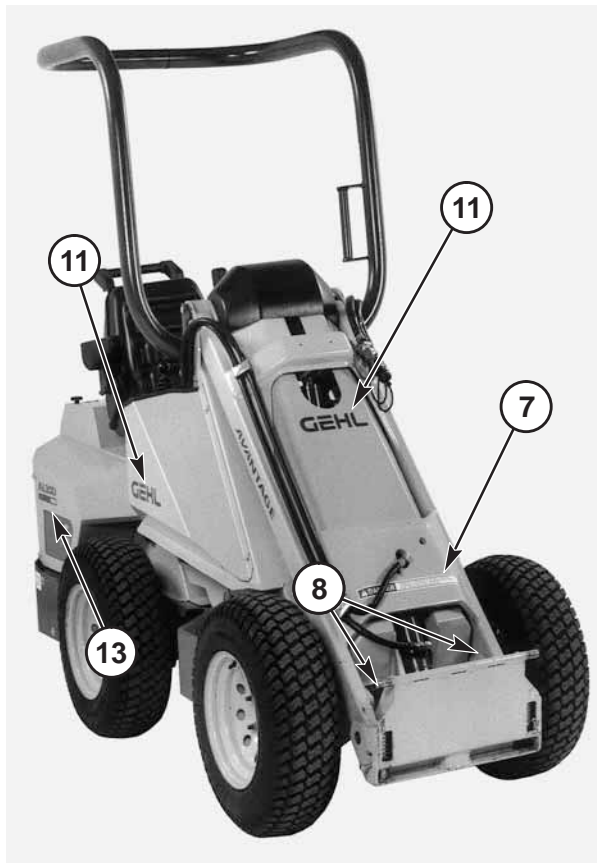
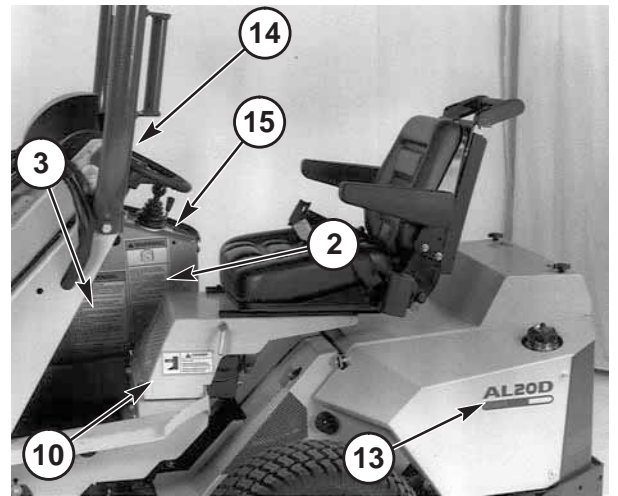
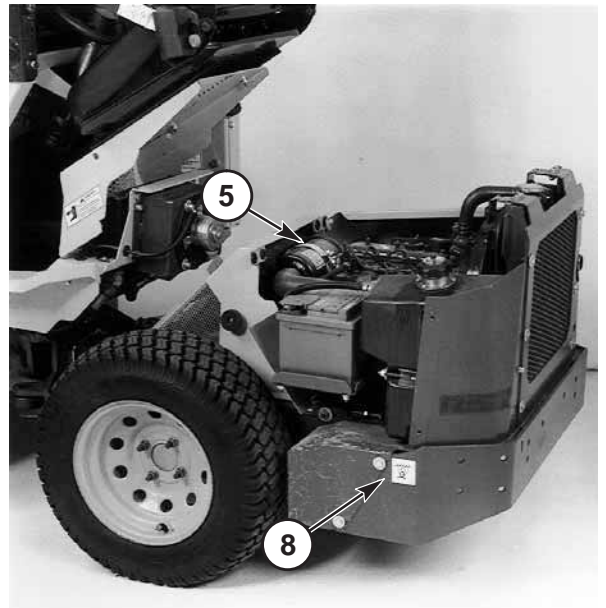
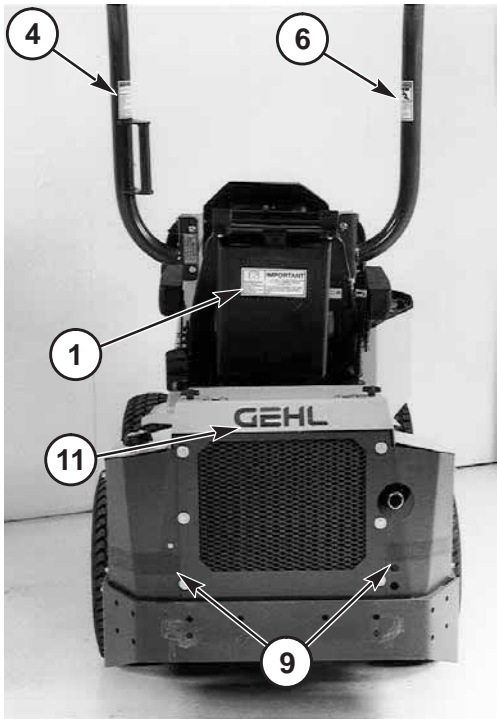
PAINT NOTICE

Use this list to order paint for refinishing:

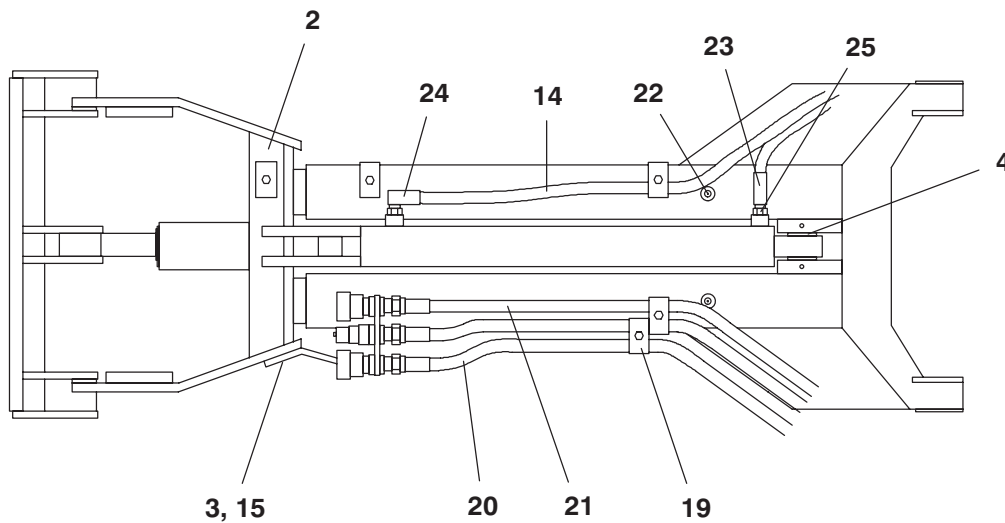
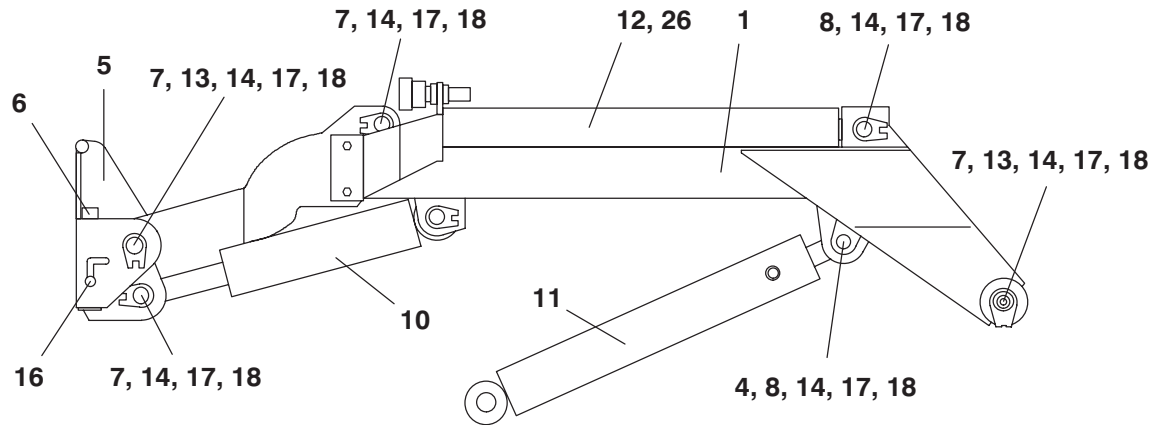
906213	One Gal. Construction Yellow
906323	One Qt. Charcoal Grey
906317	One Gal. Charcoal Grey
906214	6 (12 oz. Spray Cans) Yellow
906318	6 (12 oz. Spray Cans) Grey

The Decal Kit for the AL20DX Loader is listed below:

Ref. No.	Part No.	Description & Quantity
	155752	Decal Kit - AL20DX
1	L65922	IMPORTANT - Operator's Manual
2	093367	WARNING - Owner's Responsibility
3	093474	WARNING - General Safety Precautions
4	093476	WARNING - Fasten Seat Belt
5	114316	IMPORTANT - Starting
6	122718	WARNING - Attachment Lock Pin
7	129132	DANGER - Lift Arm Lock
8	132139	Tiedown Location (4 Places)
9	145216	Red Reflector (2 Places)
10	154118	DANGER - Pinch Point (2 Places)
11	155724	GEHL (4 Places)
12	155729	AVANTAGE (2 Places)
13	155733	AL20DX (2 Places)
14	156138	Dashboard
15	156139	Control Panel

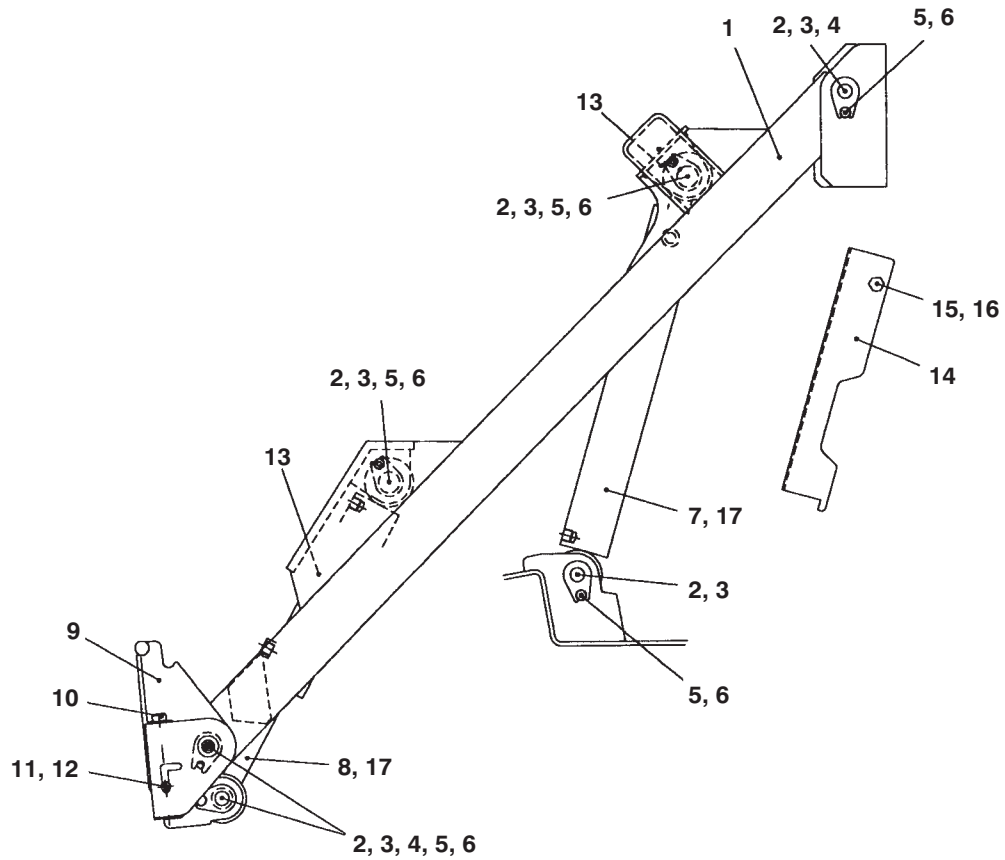


AL20DX - EXTENDABLE BOOM



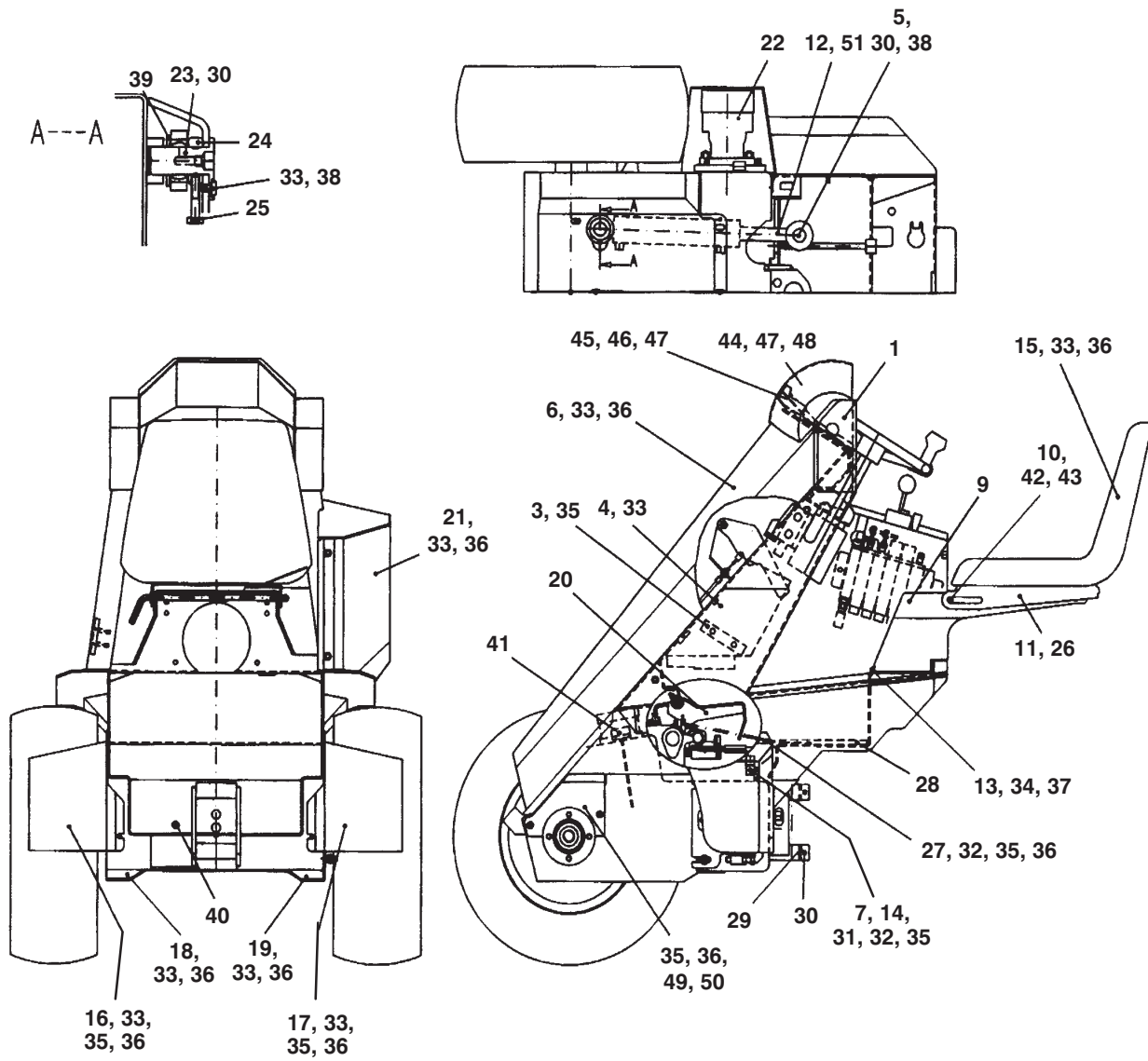
Ref. No.	Part No.	Description	Qty. Req.	Ref. No.	Part No.	Description	Qty. Req.
01	164063	INNER BOOM	1	14	154914	FITTING/GREASE	14
02	164064	OUTER BOOM	1	15	154917	CS M12 X 35	2
03	164065	EAR	1	16	154943	CS M8 X 80	2
04	164074	BUSHING	4	17	154916	CS M8 X 16	10
05	154957	ATTACHMENT PLATE ASSY	1	18	164070	WASHER	10
06	154997	QUICK COUPLING PIN F20	2	19	154934	PIPE CLAMP	4
07	154993	PIVOT PIN	8	20	164072	HOSE/HYDRAULIC	2
08	164066	PIN	2	21	164071	HOSE/HYDRAULIC	1
09	154794	PRESSURE SPRING 2,5 X 25 X 110	2	23	164073	HOSE/HYDRAULIC	1
10	164068	CYLINDER/HYDRAULIC	1	24	154789	ELBOW/FITTING 90 DEG	1
11	164067	CYLINDER/HYDRAULIC	1	25	154786	BASIC FITTING	1
12	164069	CYLINDER/HYDRAULIC	1	26	164083	KIT/SEAL	1
13	154790	SLIDE BEARING	4				

AL20DX - STANDARD BOOM



Ref. No.	Part No.	Description	Qty. Req.	Ref. No.	Part No.	Description	Qty. Req.
01	154956	BOOM/LOADER	1	10	154997	PIN/QUICK COUPLING	2
02	154993	PIN/PIVOT	8	11	154943	CS M8-80	2
03	154914	FITTING/R1/8" STRAIGHT	8	12	154794	SPRING/PRESSURE	2
04	154790	BEARING/SLIDE	4	13	154934	CLAMP/PIPE	2
05	154916	CS M8-16	8	14	154989	BOOM/SERVICE SUPPORT	1
06	154938	WASHER/SPRING M8	8	15	154899	CS M12-60	1
07	154990	CYLINDER/HYDRAULIC	1	16	154910	HN M12	1
08	154991	CYLINDER/HYDRAULIC	1	17	157361	KIT/SEAL	1
09	154957	PLATE/ATTACHMENT	1				

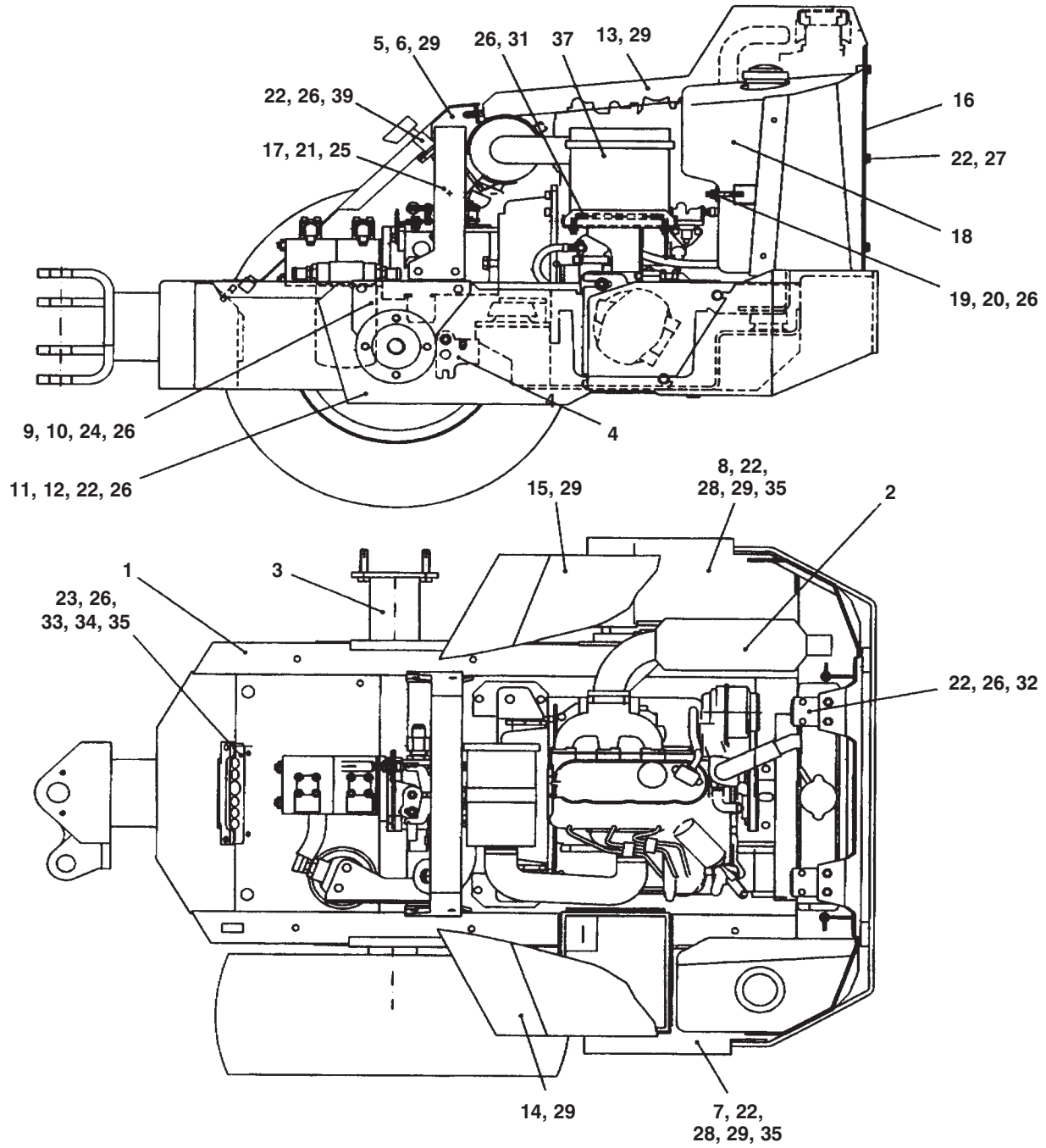
AL20DX - CHASSIS, FRONT



AL20DX - CHASSIS, FRONT

Ref. No.	Part No.	Description	Qty. Req.	Ref. No.	Part No.	Description	Qty. Req.
01	154961	CHASSIS/FRONT	1	27	155112	PLATE/BOTTOM	1
02	154935	THROTTLE/HAND	1	28	155015	CARPET	1
03	155004	CLAMP/HOSE	1	29	155023	BUSHING	2
04	155013	COVER/HOSE	1	30	154914	FITTING/STRAIGHT 1/8"	4
05	155026	PIN/PIVOT FRONT	1	31	154893	CS M8-40	2
06	154987	PLATE/COVER SHORT	1	32	154892	CS M8-30	4
07	155102	CLAMP/HOSE LOWER	1	33	154916	CS M8-16	26
08	155107	WIRE/THROTTLE	1	34	154909	LN M10	2
09	155029	FRAME/SEAT	1	35	154904	LN M8	14
10	155000	PIN/PIVOT SEAT	1	36	154922	WASHER M8	32
11	154972	HANDLE/SEAT LOCKING	1	37	154919	WASHER M10	2
12	155019	CYLINDER/ARTICULATION	1	38	154938	WASHER/SPRING M8	2
13	155001	LOOP/HINGE	2	39	154946	WASHER M30	1
14	155103	CLAMP/HOSE UPPER	1	40	154942	PLUG/HEX 3/8"	1
15	154807	SEAT/PRAMA	1	41	154992	DIPSTICK/BREATHER	1
16	155080	COVER/HYDRAULIC MOTOR LT	1	42	154924	WASHER M12	1
17	155081	COVER/HYDRAULIC MOTOR RT	1	43	154880	SPLINT/RING 4,5MM	1
18	155016	COVER/CHAIN LT	1	44	154986	COVER/FINGER PROTECTING	1
19	155017	COVER/CHAIN RT	1	45	154985	DASHBOARD	1
20	154982	PEDAL/DRIVE	1	46	154988	SYSTEM/ELECTRIC	1
21	155012	COVER/CONTROL VALVE	1	47	154886	CS M6-12	8
22	154983	DRIVE/TRANSMISSION	1	48	154923	WASHER M6	4
23	155025	PIN/PIVOT REAR	1	49	155132	PLATE/GAP SEALING LT	1
24	155024	BUSHING/LOCKING	1	50	155133	PLATE/GAP SEALING RT	1
25	155027	SCREW/LOCKING	1	51	155831	KIT/SEAL	1
26	154971	SUPPORT/SEAT	1				

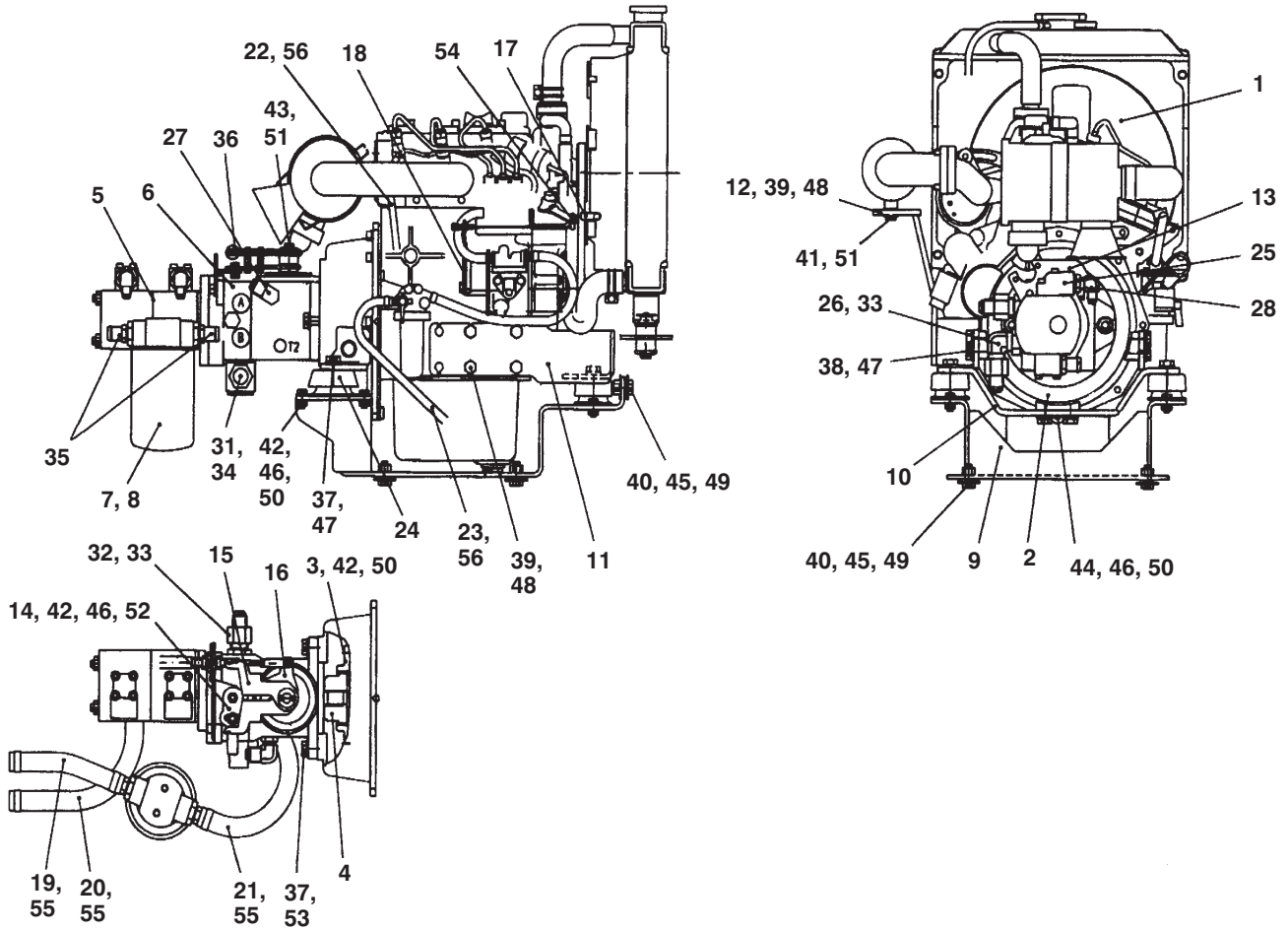
AL20DX - CHASSIS, REAR



AL20DX - CHASSIS, REAR

Ref. No.	Part No.	Description	Qty. Req.	Ref. No.	Part No.	Description	Qty. Req.
01	154964	CHASSIS/REAR	1	19	155127	SUPPORT	1
02	154967	ENGINE	1	20	155128	ROD/SCREW	1
03	154983	TRANSMISSION/DRIVE	1	21	154896	CS M10-30	4
04	154980	BRAKE/PARKING	1	22	154890	CS M8-20	16
05	155121	PLATE/COVER LT	1	23	154892	CS M8-30	2
06	155122	PLATE/COVER RT	1	24	154894	CS M8-70	4
07	155030	COVER/HYDRAULIC MOTOR LT	1	25	154909	LN M10	4
08	155031	COVER/HYDRAULIC MOTOR RT	1	26	154904	LN M8	14
09	155008	COVER/GAP LT	1	27	154922	WASHER M8	6
10	155041	COVER/GAP RT	1	28	154908	HN M10	4
11	155042	COVER/CHAIN REAR LT	1	29	154877	WASHER M8	6
12	155043	COVER/CHAIN REAR RT	1	31	155117	CLAMP	1
13	155125	PLATE/COVER CENTER	1	32	155115	EAR/UPPER RADIATOR	2
14	155123	PLATE/COVER SIDE LT	1	33	155104	CLAMP/HOSE UPPER	1
15	155124	PLATE/COVER SIDE RT	1	34	155102	CLAMP/HOSE LOWER	1
16	155116	NET	1	35	154893	CS M8-40	2
17	155120	CLAMP/FASTENING	1	37	154860	BATTERY/12V	1
18	154984	TANK/FUEL	1	39	154828	SWITCH/BATTERY DISCONNECT	1

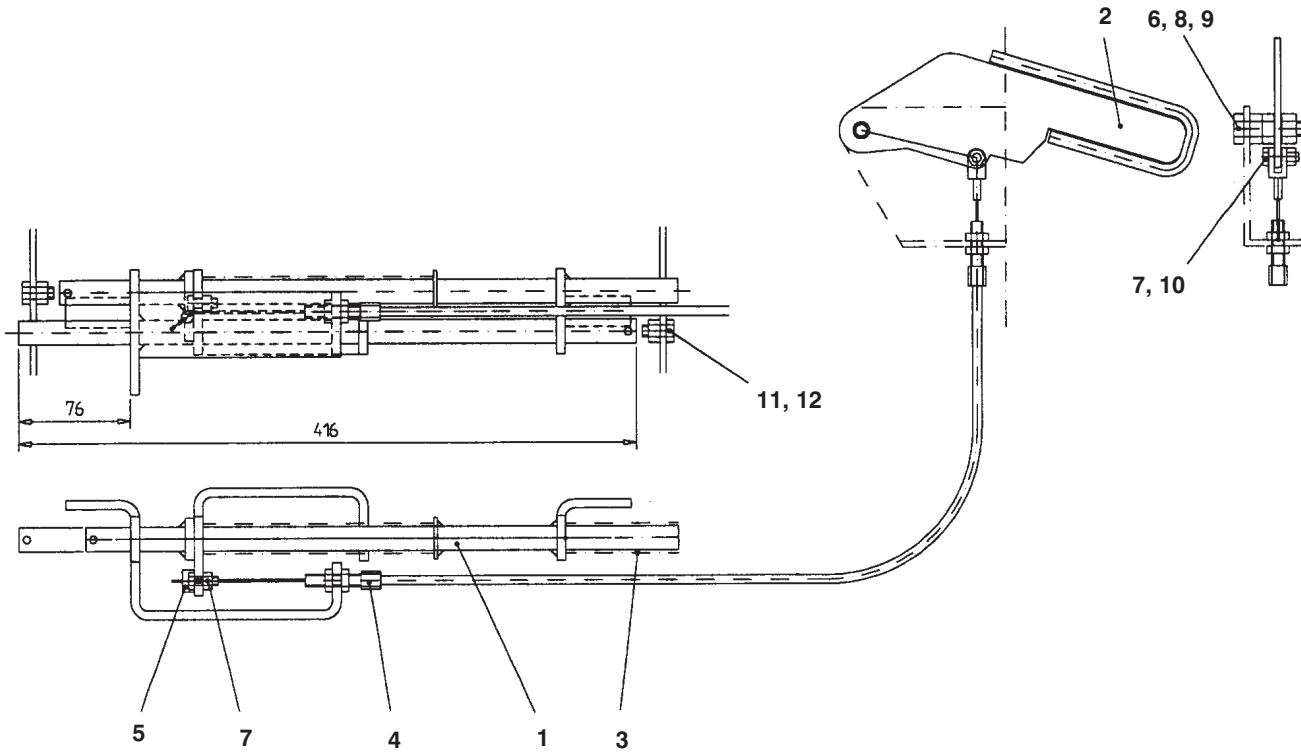
AL20DX - ENGINE



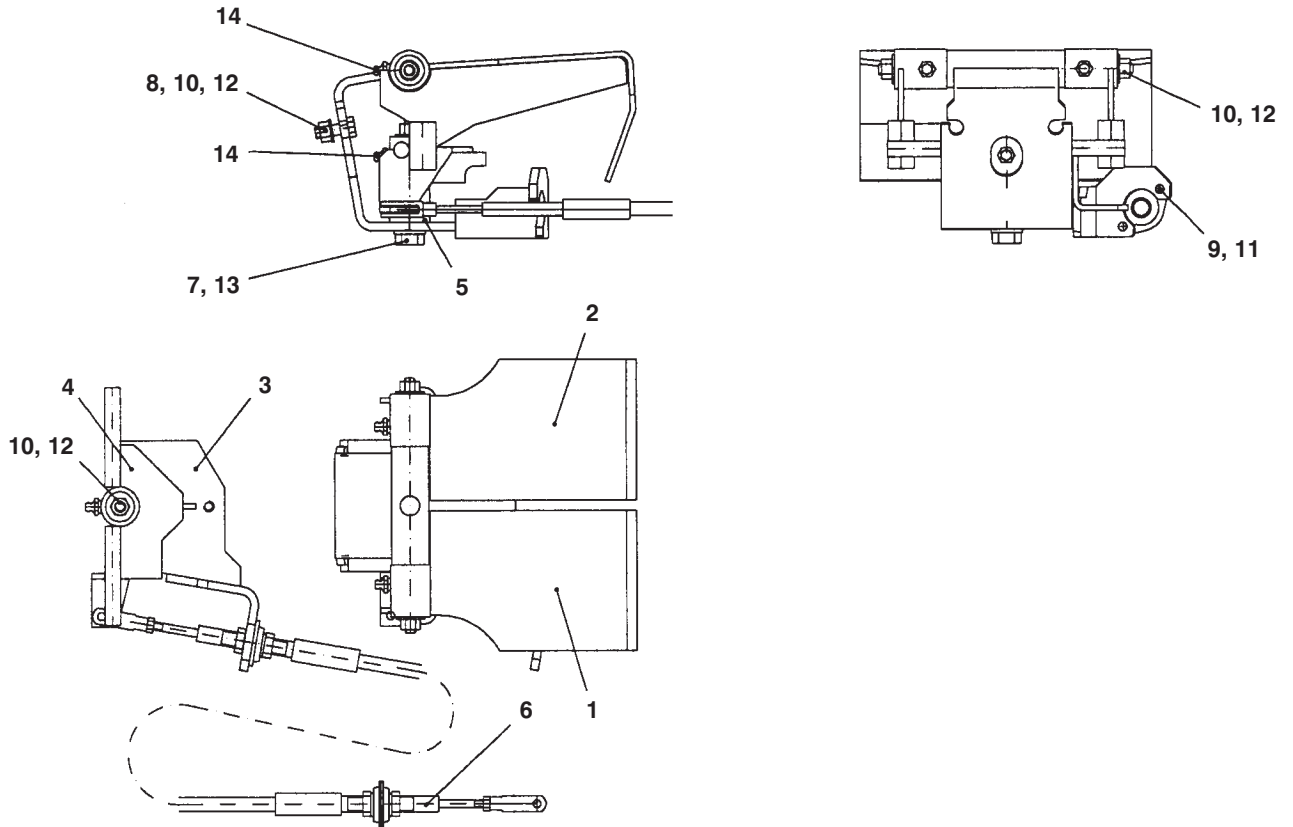
AL20DX - ENGINE

Ref. No.	Part No.	Description	Qty. Req.	Ref. No.	Part No.	Description	Qty. Req.
01	154845	KUBOTA/ENGINE	1	28	154789	FITTING/ELBOW 90°	2
02	154870	COUPLING/HOUSING	1	31	155090	COUPLING/HOSE	1
03	154871	COUPLING	1	32	154836	FITTING/BASIC	1
04	154872	COUPLING	1	33	154834	REDUCER	2
05	154844	PUMP/HYDRAULIC	1	34	154852	FITTING/BANJO	1
06	154843	PUMP/VARIABLE DISPLACEMENT	1	35	154835	REDUCER	2
07	154837	FILTER/SUCTION	1	36	154866	PUMP/CENTERING SPRING	1
08	154865	ELEMENT/FILTER	1	37	154917	CS M12-35	5
09	155136	CRADLE/ENGINE	1	38	154897	CS M12-20	6
10	155134	FIXTURE/ENGINE LIFTING REAR	1	39	154936	CS M10-1	8
11	155135	FIXTURE/ENGINE LIFTING FRONT	1	40	154895	CS M10-25	6
12	155137	SUPPORT/EXHAUST PIPE	1	41	154891	CS M8-25	1
13	155110	EAR/THROTTLE WIRE	1	42	154890	CS M8-20	12
14	155126	LEVER/ADJUSTING	1	43	154889	CS M8-12	1
15	155108	LEVER/CENTERING	2	44	154918	CS M8-30	6
16	155109	LEVER/ACTUATING	1	45	154909	LN M10	6
17	155138	THROTTLE/RETRACTING SPRING	1	46	154904	LN M8	10
18	155003	EAR/THROTTLE WIRE	1	47	154931	WASHER/SPRING M12	9
19	155096	HOSE/INLET	1	48	154930	WASHER/SPRING M10	8
20	155076	HOSE/INLET	1	49	154915	WASHER M10	6
21	154995	HOSE/INLET 3/4"	2	50	154938	WASHER/SPRING M8	14
22	155078	HOSE/FUEL RETURN	1	51	154877	WASHER M8	3
23	155077	HOSE/FUEL INLET	1	52	154922	WASHER M8	4
24	154781	DAMPER/VIBRATION	3	53	154878	WASHER M12	2
25	154854	FLANGE/PRESSURE	2	54	154944	FITTING/SCREW	1
26	154832	FITTING/ELBOW 90°	1	55	154927	CLAMP/HOSE	6
27	155142	FITTING/ELBOW 90°	1	56	154941	CLAMP/HOSE	4

AL20DX - PARKING BRAKE

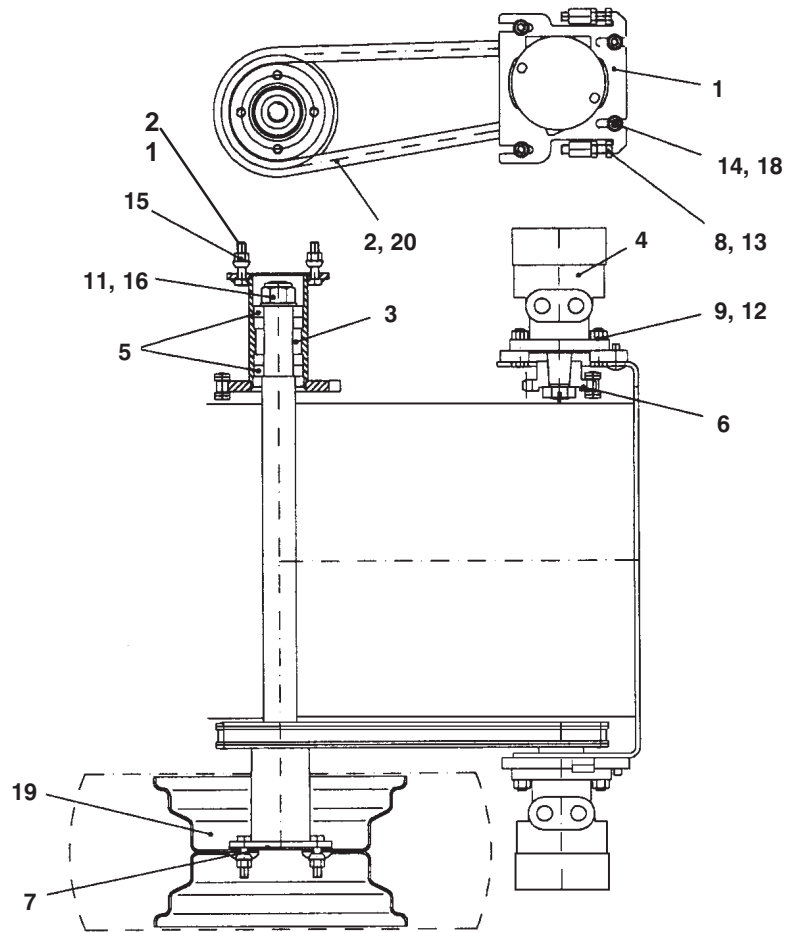


Ref. No.	Part No.	Description	Qty. Req.	Ref. No.	Part No.	Description	Qty. Req.
01	154973	BRAKE/PARKING	1	08	154908	HN M10	2
02	155129	LEVER/PARKING BRAKE	1	09	154909	LN M10	1
03	154783	SPRING/PRESSURE	1	10	154902	LN M6	2
04	155050	WIRE/PARKING BRAKE	1	11	154890	CS M8-20	2
06	154926	CS M10-60	1	12	154904	LN M8	2
07	154887	CS M6-20	2				



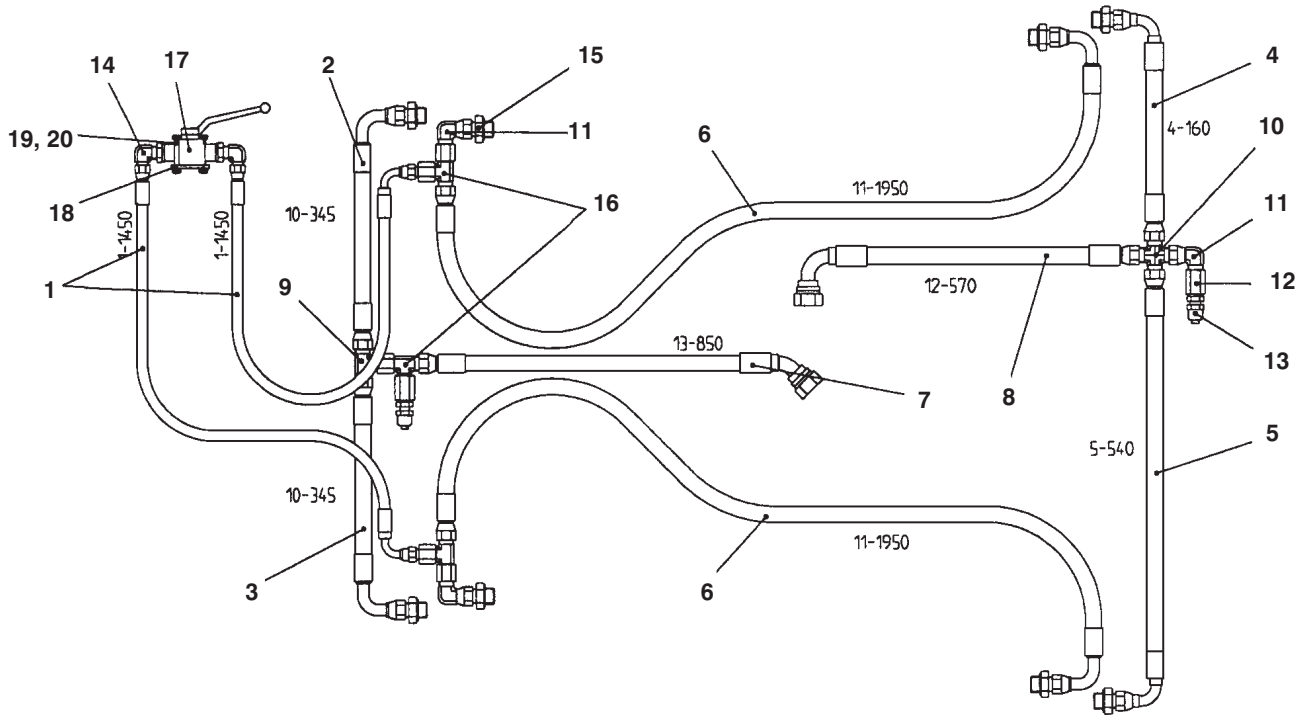
Ref. No.	Part No.	Description	Qty. Req.	Ref. No.	Part No.	Description	Qty. Req.
01	155093	PEDAL/DRIVE LT	1	08	154891	CS M8-25	2
02	155094	PEDAL/DRIVE RT	1	09	154887	CS M6-20	2
03	155092	FRAME/DRIVE PEDAL	1	10	154904	LN M8	5
04	155095	ARM/ROCKER	1	11	154902	LN M6	2
05	155091	PIN/VERTICAL	1	12	154877	WASHER M8	5
06	155072	CABLE/DRIVE	1	13	154931	WASHER M12	1
07	154897	CS M12-20	1	14	154914	FITTING/R1/8" STRAIGHT	3

AL20DX - TRANSMISSION



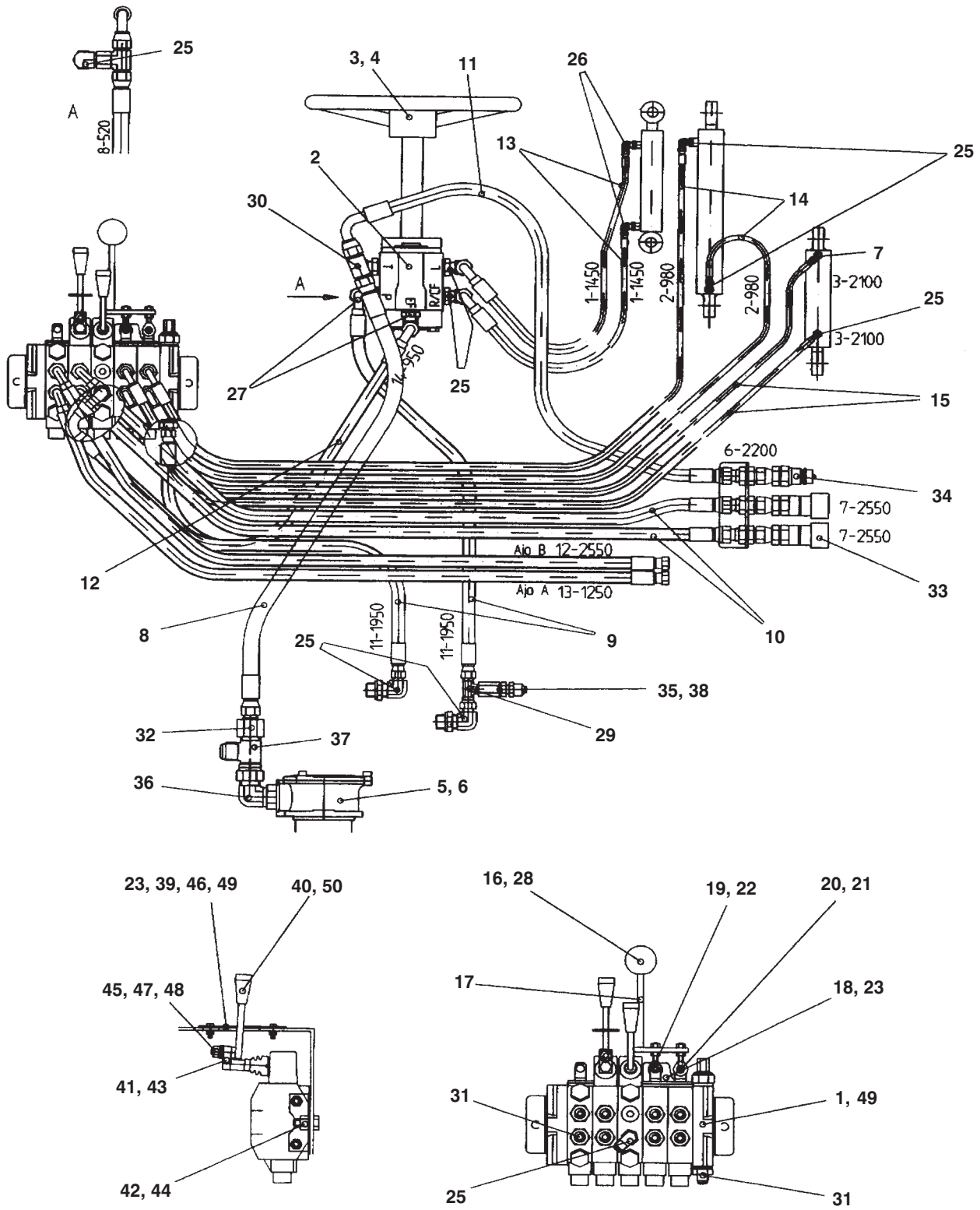
Ref. No.	Part No.	Description	Qty. Req.	Ref. No.	Part No.	Description	Qty. Req.
01	155105	CARRIER	2	12	154911	LN M12	4
02	155071	CHAIN/TRANSMISSION	2	13	154910	HN M12	8
03	155100	HUB/WHEEL	2	14	154909	LN M10	8
04	154863	MOTOR/HYDRAULIC	2	15	154932	NUT/WHEELM12-1,5	8
05	154784	BEARING/BALL	4	16	154879	WASHER M27	2
06	155106	WHEEL/CHAIN PRIMARY	2	18	154915	WASHER M10	8
07	155052	PLATE/COVER WHEEL HUB	2	19	154815	WHEEL	4
08	154925	CS M12-60	4	20	154929	LINK/CONNECTING	2
09	154898	CS M12-45	4	21	157350	BOLT/WHEELM12-1,5	8
11	154945	HN M27-2	2				

AL20DX - HYDRAULIC HOSES



Ref. No.	Part No.	Description	Qty. Req.	Ref. No.	Part No.	Description	Qty. Req.
01	155055	HOSE/HYDRAULIC L=1450 R1AT-04 ...	2	11	154827	FITTING/ELBOW 90°	3
02	155087	HOSE/HYDRAULIC L=345 2LW-06	1	12	154855	FITTING/TEST	1
03	155087	HOSE/HYDRAULIC L=345 2LW-06	1	13	154857	FITTING/MANOMETER	1
04	155084	HOSE/HYDRAULIC L=160 2LW-06	1	14	154798	FITTING/ELBOW 90°	2
05	155064	HOSE/HYDRAULIC L= 540 2LW-06	1	15	154792	FITTING/BASIC	8
06	155085	HOSE/HYDRAULIC L=1950 2LW-06	2	16	154791	L FITTING BODY	3
07	155089	HOSE/HYDRAULIC L=850 3-PLY-08	1	17	154858	VALVE/BALL	1
08	155063	HOSE/HYDRAULIC L=345 3-PLY	1	18	155010	PLATE/MOUNTING	1
09	155088	T FITTING	1	19	154948	CS M6-45	2
10	154797	FITTING/CROSS	1	20	154902	LN M6	2

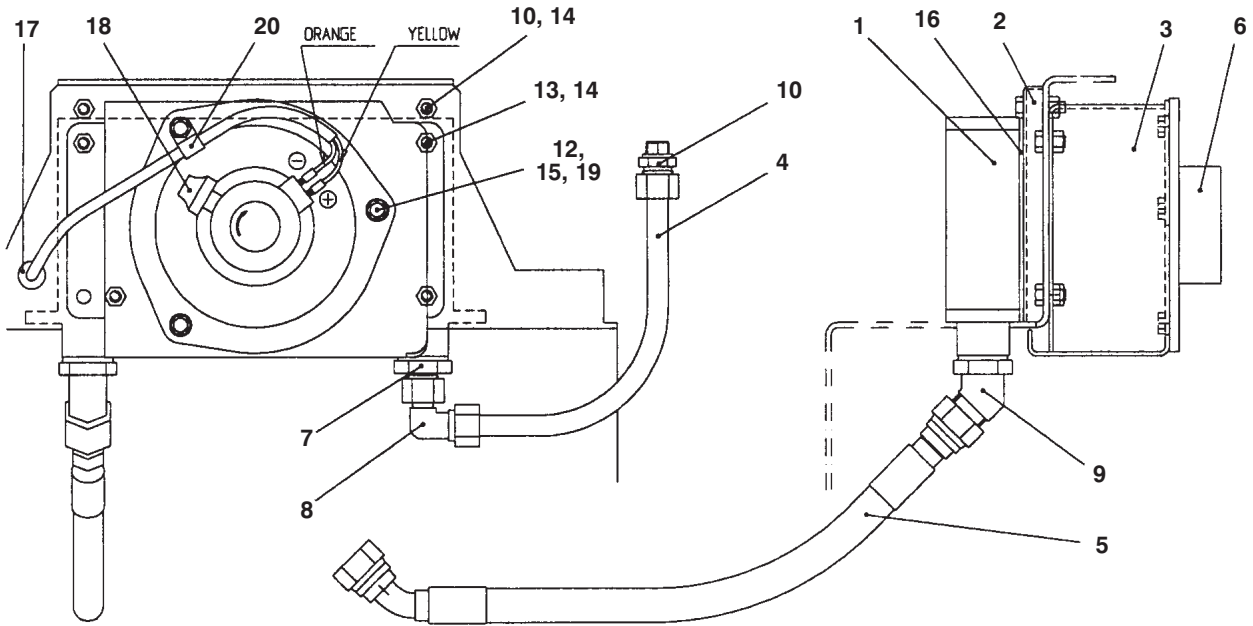
AL20DX - CONTROL VALVE/HOSE ASSEMBLY



AL20DX - CONTROL VALVE/HOSE ASSEMBLY

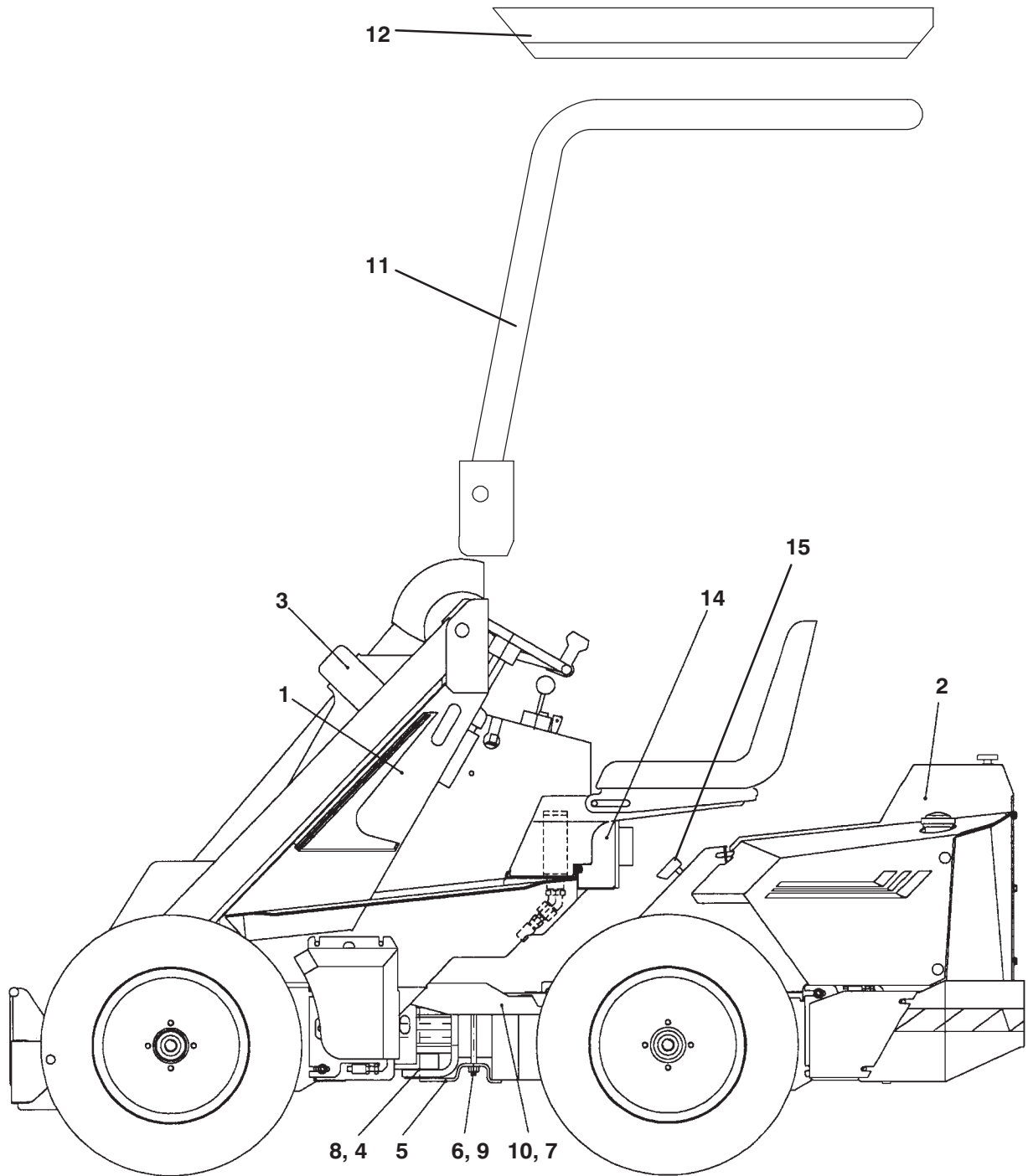
Ref. No.	Part No.	Description	Qty. Req.	Ref. No.	Part No.	Description	Qty. Req.
01	154842	VALVE/CONTROL	1	27	154830	FITTING/ELBOW 90°	2
02	154841	BLOCK/CONTROL	1	28	154940	COVER/RUBBER	1
03	154839	ROD/STEERING WHEEL	1	29	154791	L FITTING	1
04	154853	WHEEL/STEERING	1	30	154791	L FITTING	1
05	154838	FILTER/HYDRAULIC OIL	1	31	154786	FITTING/BASIC	9
06	154939	ELEMENT/FILTER	1	32	154802	REDUCER	1
07	154812	FITTING/ELBOW 90°	1	33	154851	FITTING/QUICK 1/2"	2
08	155061	HOSE/HYDRAULIC L=520 R1AT-08	1	34	154850	FITTING/QUICK 1/2"	1
09	155064	HOSE/HYDRAULIC L=1950 R2AT-06 ...	2	35	154857	FITTING/MANOMETER	1
10	155060	HOSE/HYDRAULIC L=2250 R2AT-06 ...	2	36	154831	ELBOW FITTING 90°	1
11	155059	HOSE/HYDRAULIC L=2200 R1AT-06 ...	1	37	154833	L FITTING	1
12	155067	HOSE/HYDRAULIC L=950 R2AT-06	1	38	154856	FITTING/TEST	1
13	155055	HOSE/HYDRAULIC L=1450 R1AT-04 ...	2	39	155097	PLATE/COVER	1
14	155056	HOSE/HYDRAULIC L=980 R1AT-04	2	40	155098	LEVER	1
15	155057	HOSE/HYDRAULIC L=2100 R1AT-04 ...	2	41	155099	PIECE/CONNECTING	1
16	154912	KNOB/BALL	1	42	154895	CS M10-25	2
17	155040	LEVER/CONTROL	1	43	154891	CS M8-25	1
18	155039	EAR	1	44	154909	LN M10	2
19	154998	PIN/CONTROL LEVER	2	45	154904	LN M8	1
20	154782	ARM/JOINT	3	46	154900	LN M5	2
21	154901	HN M6	6	47	154920	WASHER M8	2
22	154999	NUT/LEVER M6	4	48	154938	WASHER/SPRING M8	1
23	154885	CS M5-16	4	49	157362	KIT/VALVE SEAL	1
25	154789	FITTING/ELBOW 90°	9	50	157360	KNOB	2
26	154798	FITTING/ELBOW 90°	2				

AL20DX - HYDRAULIC OIL COOLER



Ref. No.	Part No.	Description	Qty. Req.	Ref. No.	Part No.	Description	Qty. Req.
01	154809	CELL/OIL COOLER	1	09	154810	FITTING/ELBOW 45°	1
02	155009	FRAME	1	10	154867	FITTING/BASIC	1
03	155114	ENCLOSURE/FAN	1	11	154916	CS M8-16	4
04	155028	PIPE/RETURN	1	12	154891	CS M8-225	3
05	155082	HOSE/HYDRAULIC L=900	1	13	154892	CS M8-30	2
06	154859	FAN	1	14	154904	LN M8	6
07	154868	FITTING/BASIC	1	15	154920	WASHER M8	3
08	154937	FITTING/ADJUSTABLE ELBOW	1				

AL20DX – CENTER PIVOT, ROPS & FOPS



Ref. No.	Part No.	Description	Qty. Req.	Ref. No.	Part No.	Description	Qty. Req.
01	154963	CHASSIS/FRONT	1	08	154884	FHCS M8-20	4
02	154965	CHASSIS/REAR	1	09	154911	LN M12	2
03	154958	BOOM/LOADER	1	10	154881	SPLINT/RING 9,5MM	1
04	155070	PIN/PIVOT	2	11	156320	ROPS/FRAME	1
05	155011	PLATE/LOCKING	1	12	156321	FOPS/ROOF (OPTIONAL)	1
06	155079	RIVET	1	14	154975	COOLER/HYDRAULIC OIL	1
07	155014	DEVICE/LOCKING	1	15	157352	KEY/MAIN SWITCH	1

Index

C

Center Pivot, ROPS & FOPS, 19
Chassis, front, AL20DX, 6–7
Chassis, rear, 8–9
Control Valve/Hose, 16–17

D

Decal Locations, 2–3
Drive Pedal, 13

E

Engine, 10–11

Extendable Boom, 4

H

Hydraulic Oil Cooler, 18

P

Parking Brake, 12

S

Standard boom, 5

T

Transmission, 14, 15

AL20DX - NUMERICAL INDEX

Part No.	Page No.	Ref. No.	Part No.	Page No.	Ref. No.	Part No.	Page No.	Ref. No.	Part No.	Page No.	Ref. No.
L65922	02	01	154838	17	05	154891	18	12	154916	05	05
093367	02	02	154839	17	03	154892	07	32	154916	07	33
093474	02	03	154841	17	02	154892	09	23	154916	18	11
093476	02	04	154842	17	01	154892	18	13	154917	04	15
114316	02	05	154843	11	06	154893	07	31	154917	11	37
122718	02	06	154844	11	05	154893	09	35	154918	11	44
129132	02	07	154845	11	01	154894	09	24	154919	07	37
132139	02	08	154850	17	34	154895	11	40	154920	17	47
145216	02	09	154851	17	33	154895	17	42	154920	18	15
154118	02	10	154852	11	34	154896	09	21	154922	07	36
154781	11	24	154853	17	04	154897	11	38	154922	09	27
154782	17	20	154854	11	25	154897	13	07	154922	11	52
154783	12	03	154855	15	12	154898	14	09	154923	07	48
154784	14	05	154856	17	38	154899	05	15	154924	07	42
154786	04	25	154857	15	13	154900	17	46	154925	14	08
154786	17	31	154857	17	35	154901	17	21	154926	12	06
154789	04	24	154858	15	17	154902	12	10	154927	11	55
154789	11	28	154859	18	06	154902	13	11	154929	14	20
154789	17	25	154860	09	37	154902	15	20	154930	11	48
154790	04	13	154863	14	04	154904	07	35	154931	11	47
154790	05	04	154865	11	08	154904	09	26	154931	13	13
154791	15	16	154866	11	36	154904	11	46	154932	14	15
154791	17	29	154867	18	10	154904	12	12	154934	04	19
154791	17	30	154868	18	07	154904	13	10	154934	05	13
154792	15	15	154870	11	02	154904	17	45	154935	07	02
154794	04	09	154871	11	03	154904	18	14	154936	11	39
154794	05	12	154872	11	04	154908	09	28	154937	18	08
154797	15	10	154877	09	29	154908	12	08	154938	05	06
154798	15	14	154877	11	51	154909	07	34	154938	07	38
154798	17	26	154877	13	12	154909	09	25	154938	11	50
154802	17	32	154878	11	53	154909	09	25	154938	17	48
154807	07	15	154879	14	16	154909	11	45	154939	17	06
154809	07	15	154879	14	16	154909	12	09	154940	17	28
154809	18	01	154880	07	43	154909	14	14	154941	11	56
154810	18	09	154881	19	10	154909	17	44	154942	07	40
154812	17	07	154884	19	08	154910	05	16	154943	04	16
154815	14	19	154885	17	23	154910	14	13	154943	05	11
154827	15	11	154886	07	47	154911	14	12	154944	11	54
154828	09	39	154887	12	07	154911	19	09	154945	14	11
154830	17	27	154887	13	09	154912	17	16	154946	14	11
154831	17	36	154889	11	43	154914	17	16	154946	07	39
154831	17	36	154889	11	43	154914	04	14	154948	15	19
154832	11	26	154890	09	22	154914	05	03	154956	05	01
154833	17	37	154890	11	42	154914	07	30	154957	05	01
154834	11	33	154890	12	11	154914	13	14	154957	04	05
154835	11	35	154891	11	41	154915	13	14	154957	05	09
154836	11	32	154891	13	08	154915	11	49	154958	19	03
154837	11	07	154891	17	43	154915	14	18	154961	07	01
154837	11	07	154891	17	43	154916	04	17	154963	19	01

AL20DX - NUMERICAL INDEX

Part No.	Page No.	Ref. No.	Part No.	Page No.	Ref. No.	Part No.	Page No.	Ref. No.	Part No.	Page No.	Ref. No.
154964	09	01	155016	07	18	155082	18	05	155126	11	14
154965	19	02	155017	07	19	155084	15	04	155127	09	19
154967	09	02	155019	07	12	155085	15	06	155128	09	20
154971	07	26	155023	07	29	155087	15	02	155129	12	02
154972	07	11	155024	07	24	155087	15	03	155132	07	49
154973	12	01	155025	07	23	155088	15	09	155133	07	50
154975	19	14	155026	07	05	155089	15	07	155134	11	10
154980	09	04	155027	07	25	155090	11	31	155135	11	11
154982	07	20	155028	18	04	155091	13	05	155136	11	09
154983	07	22	155029	07	09	155092	13	03	155137	11	12
154983	09	03	155030	09	07	155093	13	01	155138	11	17
154984	09	18	155031	09	08	155094	13	02	155142	11	27
154985	07	45	155039	17	18	155095	13	04	155724	02	11
154986	07	44	155040	17	17	155096	11	19	155729	02	12
154987	07	06	155041	09	10	155097	17	39	155733	02	13
154988	07	46	155042	09	11	155098	17	40	155831	07	51
154989	05	14	155043	09	12	155099	17	41	156138	02	14
154990	05	07	155050	12	04	155100	14	03	156139	02	15
154991	05	08	155052	14	07	155102	07	07	156320	19	11
154992	07	41	155055	15	01	155102	09	34	156321	19	12
154993	04	07	155055	17	13	155103	07	14	157350	14	21
154993	05	02	155056	17	14	155104	09	33	157352	19	15
154995	11	21	155057	17	15	155105	14	01	157360	17	50
154997	04	06	155059	17	11	155106	14	06	157361	05	17
154997	05	10	155060	17	10	155107	07	08	157362	17	49
154998	17	19	155061	17	08	155108	11	15	164063	04	01
154999	17	22	155063	15	08	155109	11	16	164064	04	02
155000	07	10	155064	15	05	155110	11	13	164065	04	03
155001	07	13	155064	17	09	155112	07	27	164066	04	08
155003	11	18	155067	17	12	155114	18	03	164067	04	11
155004	07	03	155070	19	04	155115	09	32	164068	04	10
155008	09	09	155071	14	02	155116	09	16	164069	04	12
155009	18	02	155072	13	06	155117	09	31	164070	04	18
155010	15	18	155076	11	20	155120	09	17	164071	04	21
155011	19	05	155077	11	23	155121	09	05	164072	04	20
155012	07	21	155078	11	22	155122	09	06	164073	04	23
155013	07	04	155079	19	06	155123	09	14	164074	04	04
155014	19	07	155080	07	16	155124	09	15	164083	04	26
155015	07	28	155081	07	17	155125	09	13			







NOTES

NOTES

TORQUE SPECIFICATIONS

NOTE: Use these torque values when tightening **GEHL** hardware (excluding: Locknuts and Self-tapping, Thread Forming and Sheet Metal Screws) unless specified otherwise.

All torque values are in Lb-Ft except those marked with an * which are Lb-In
(For metric torque value Nm, multiply Lb-Ft value by 1.355 or Lb-In value by 0.113)

Unified National Thread	Grade 2 		Grade 5 		Grade 8 	
	Dry	Lubed	Dry	Lubed	Dry	Lubed
8-32	19*	14*	30*	22*	41*	31*
8-36	20*	15*	31*	23*	43*	32*
10-24	27*	21*	43*	32*	60*	45*
10-32	31*	23*	49*	36*	68*	51*
1/4-20	66*	50*	9	75*	12	9
1/4-28	76*	56*	10	86*	14	10
5/16-18	11	9	17	13	25	18
5/16-24	12		19	14		20
3/8-16	20	15	30	23	45	35
3/8-24	23	17	35	25	50	
7/16-14	32	24	50	35	70	55
7/16-20	36	27	55	40	80	60
1/2-13	50	35	75	55	110	80
1/2-20	55	40	90	65	120	90
9/16-12	70	55	110	80	150	110
9/16-18	80	60	120	90	170	130
5/8-11	100	75	150	110	220	170
5/8-18	110	85	180	130	240	180
3/4-10	175	130	260	200	380	280
3/4-16	200	150	300	220	420	320
7/8-9	170	125	430	320	600	460
7/8-14	180	140	470	360	660	500
1-8	250	190	640	480	900	680
1-14	270	210	710	530	1000	740
Metric Course Thread	Grade 8.8 		Grade 10.9 		Grade 12.9 	
	Dry	Lubed	Dry	Lubed	Dry	Lubed
M6-1	8	6	11	8	13.5	10
M8-1.25	19	14	27	20	32.5	24
M10-1.5	37.5	28	53	39	64	47
M12-1.75	65	48	91.5	67.5	111.5	82
M14-2	103.5	76.5	145.5	108	176.5	131
M16-2	158.5	117.5	223.5	165.5	271	200

GEHL®

Gehl Company 143 Water Street, P.O. Box 179, West Bend, WI 53095-0179, U.S.A.