

Hustler TrimStar 36" ***Parts Manual***



HUSTLER®
.....

Hustler Turf Equipment
.....

P.O. Box 7000
.....

Hesston, Kansas
.....

67062-2097



WARNING:



The engine exhaust from this product contains chemicals known to the State of California to cause cancer, birth defects or other reproductive harm.

NOTICE OF REQUIREMENT OF SPARK ARRESTER MUFFLER

This equipment may create sparks that can start fires around dry vegetation. California Public Resources Code Section 4442.6 provides that it is unlawful to use or operate an internal combustion engine on any forest-covered, brush-covered, or grass-covered land unless the engine is equipped with a spark arrester maintained in effective working order. A spark arrester is a device constructed of nonflammable materials specifically for the purpose of removing and retaining carbon and other flammable particles over 0.0232 of an inch in size from the exhaust flow of an internal combustion engine that uses hydrocarbon fuels or which is qualified and rated by the United States Forest Service. Other states or federal areas may have similar laws. The Operator Should Contact Local Fire Agencies For Laws or Regulations Relating to Fire Prevention Requirements. THIS EQUIPMENT DOES NOT HAVE A SPARK ARRESTER AND YOU SHOULD CONTACT YOUR AUTHORIZED DEALER FOR THE PURCHASE OF A SPARK ARRESTER.

Inspect spark arrester daily; replace every 500 hours or as needed.

The Engine Owner's Manual provides information regarding the U.S. Environmental Protection Agency (EPA) and the California Emission Control Regulation of emission systems, maintenance and warranty.

Keep Engine Owner's Manual with your unit. Should the Engine Owner's Manual become damaged or illegible, replace immediately. Replacements may be ordered per the information found in the Product Information section of the owner's manual.

Table of Contents

Section 1	
General Information	1-1
Section 2	
Mower Frame	2-2
Hydraulic System	2-4
Section 3	
Deck Lift	3-2
Deck Mounting Hardware	3-4
Cover.	3-8
Section 4	
Engine, 15HP KAW.	4-2
Fuel System	4-4
Instrument Panel.	4-6
Throttle	4-14
Park Brake	4-16
Section 5	
Tires and Wheels	5-2
Drive Tire Breakdown	5-4
Caster Wheel Breakdown	5-5
Section 6	
36" Deck Decals	6-2
36" Deck Pulleys and Spindles	6-4
36" Deck	6-6
Deck Belt Routing and Tensioning	6-8
Spindle Assembly—783506	6-10
Index	i-1

Section 1

General Information

This Manual covers TrimStar model **929232**

Frequently Ordered Parts

PART NO.	DESCRIPTION
601838	PUMP DRIVE BELT, A 58.5" EL
601786	DECK BELT, A 89.50 EL
600900	BLADE, F13.75"-L-F-CW
600901	BLADE, F20.50"-L-F-CW
068478	IN-LINE FUEL FILTER
797852	KAWASAKI KAI AIR FILTER PRECLEANER
797860	KAWASAKI KAI AIR FILTER CARTRIDGE
772079	ENGINE OIL FILTER

Service Literature

PART NO.	DESCRIPTION
111251	TRIMSTAR OWNER'S MANUAL
797787	KAWASAKI KAI 15HP ENGINE MANUAL

Note: When ordering parts, you must use the part number as shown for each part, not the index number. Always give the model and serial number to your parts and service representative.

Note: Items sold in bulk such as seals and hoses are sold by the foot.

PART NO.	DESCRIPTION
033001	FLEXIBLE TRIM
787713	HOSE, 0.50" LOW PRESSURE
015818	FUEL LINE

Using this manual

Illustrations used were current at the time of printing, but subsequent production changes may cause your machine to vary slightly in detail. Excel Industries, Inc. reserves the right to redesign and change the machine as deemed necessary, without notification. If a change has been made to your machine which is not reflected in this parts manual, see your Hustler dealer for current information and parts.

Options Available From Your Dealer

PART NO.	DESCRIPTION
107654	36" TRIMSTAR HYDRO MULCH KIT
600900	BLADE, F13.75"-L-F-CW
600901	BLADE, F20.50"-L-F-CW
102125	ROLL-ON STRIPING SULKY
929299	TRIMSTAR SIDE CATCHER
111478	KIT, 36/42 ADAPTER

Hardware Description Codes & Abbreviations

The following codes are used throughout this parts manual. Refer to this list when ordering parts.

ABBREVIATION	DESCRIPTION	ABBREVIATION	DESCRIPTION
CB	CARRIAGE BOLT	MB	MACHINE BUSHING
CE	CLEVIS PIN	MS	MACHINE SCREW
CP	COTTER PIN	NT	NUT
CS	CAP SCREW	SC	SELF TAPPING CAP SCREW
CW	CUP WASHER	SH	SOCKET HEAD
FDRW	FENDER WASHER	SB	SHOULDER BOLT
FW	FLAT WASHER	SS	SET SCREW
HX	HEX HEAD	OD	OUTSIDE DIAMETER
LW	LOCK WASHER	ID	INSIDE DIAMETER

Standard Torques

The following chart lists the standard torque values for the threaded fasteners found in this manual. Torque all cap screws, nuts and set screws to these values unless a different torque is shown in the Notes section next to the fastener.

SIZE	FT-LBS	NM	SIZE	FT-LBS	NM
.250	8.2	11.1	M3	1	1.3
.312	17	23	M4	2.2	3
.375	30	40	M5	4.5	6.1
.438	48	65	M6	7.7	10.4
.500	73	99	M8	18.5	25
.562	105	143	M10	37	50
.625	145	200	M12	64	87
.750	260	350	M14	80	108.5
.875	420	565	M16	160	215
1.00	625	850	M20	320	435
			M24	555	750

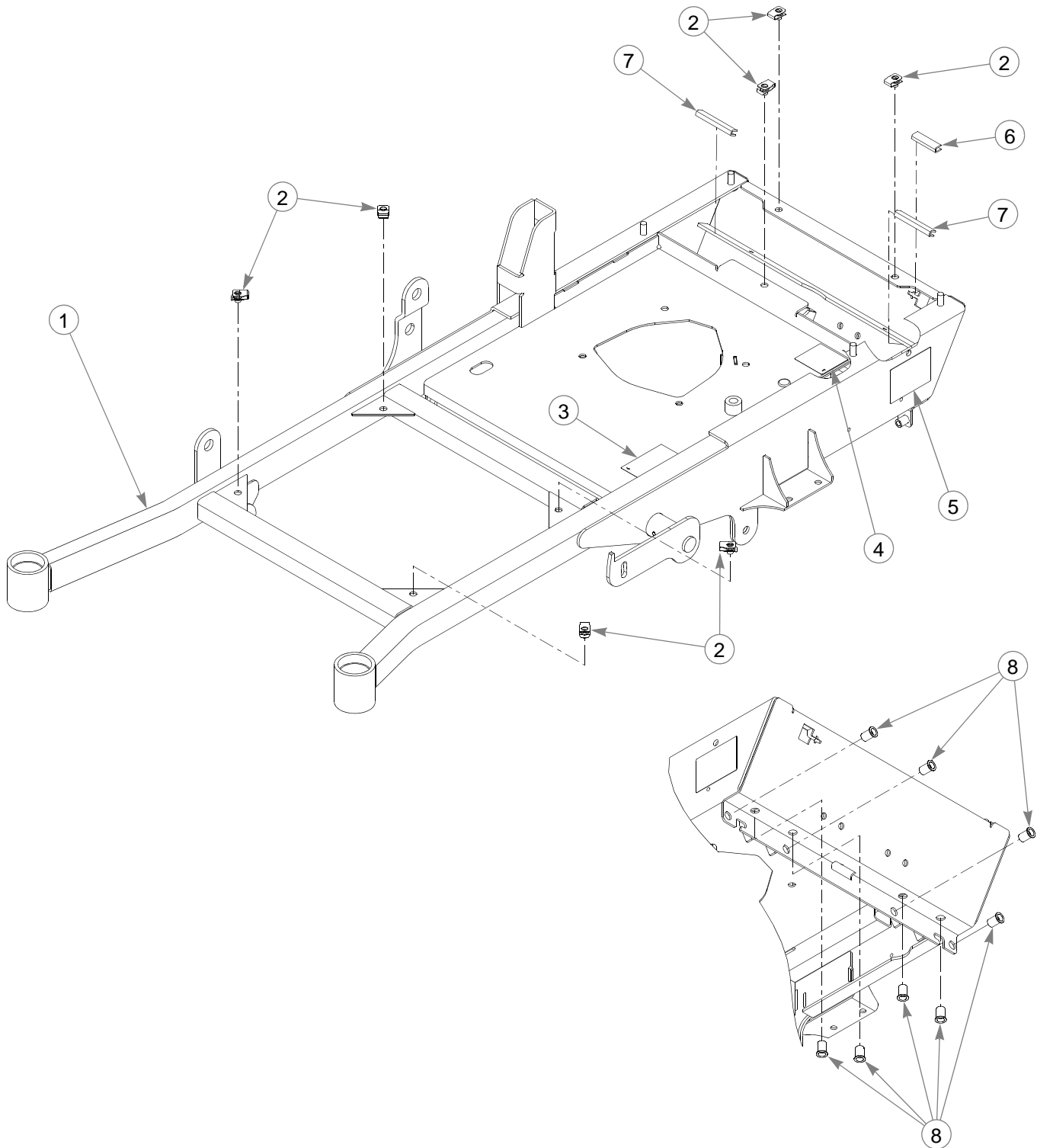
NOTE:

**Loctite® 592 to be used on all pipe threads.
Lubricate all grease zerks.**

Section 2

Mower Frame.	2-2
Hydraulic System.	2-4

Mower Frame



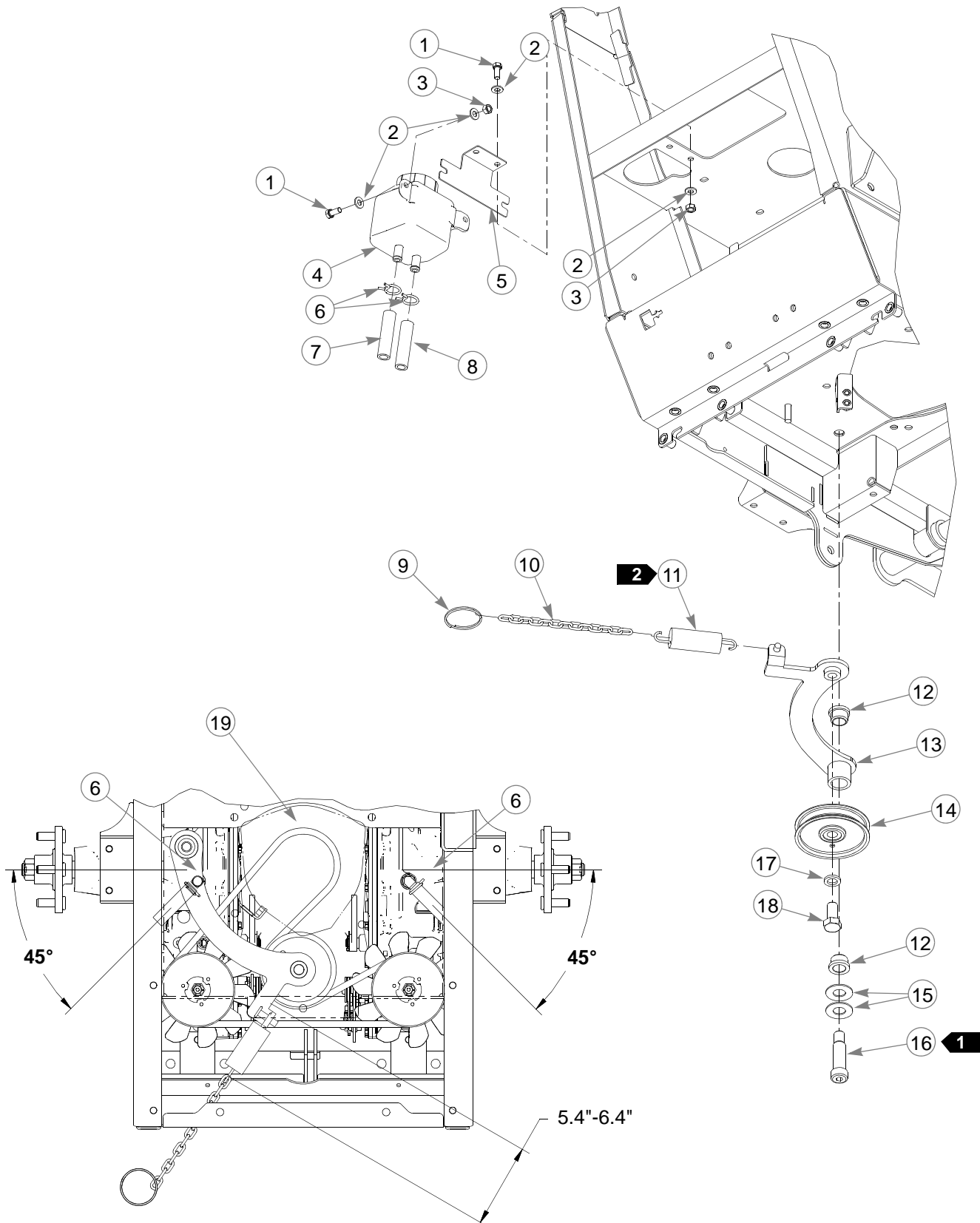
Mower Frame

INDEX NO.	PART NO.	QTY.	DESCRIPTION	
1	1	550226	1	FRAME
	2	601069	7	CN .312-18X.200 MAX THK
	3	779280CE	1	DECAL,HOT CE
	4	797647	1	DECAL, TSH IZT BELT
	5	083279	1	SERIAL NO PLATE TURF
	6	033001	1	FLEXIBLE TRIM 2" TOTAL
	7	033001	2	FLEXIBLE TRIM 3" TOTAL
	8	808485	8	RIVET NUT, 5/16-18

NOTES:

1. Includes items 2–8.

Hydraulic System



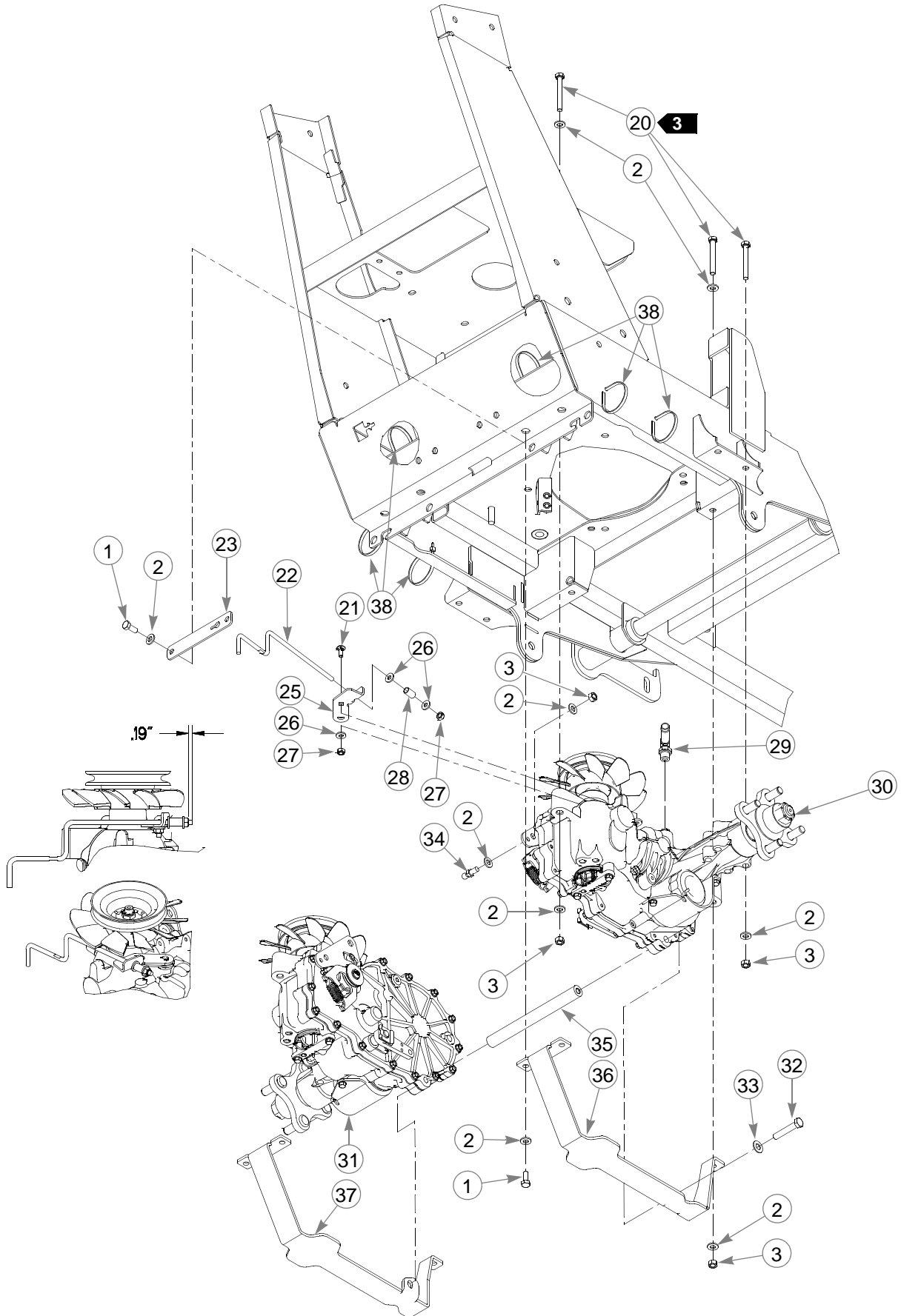
Hydraulic System

INDEX NO.	PART NO.	QTY.	DESCRIPTION
1	034280	12	CS .312-18X .750 HX G5
2	768523	32	FW .343X.687X.051/.080H
3	034272	14	NT .312-18 HX G5 ZNYC
4	601996	1	EXPANSION TANK, ZT2800
5	110762	1	OVERFLOW BRKT, TS
6	601001	4	SPRING CLAMP, .75" DIA
7	787713	1	HOSE, 0.50" LOW PRESSURE 23" LH
8	787713	1	HOSE, 0.50" LOW PRESSURE 38.5" RH
9	778746	1	RING, 2" ID SPLIT
10	259812	1	CHAIN 8" (13 LINKS)
11	036384	1	SPRING 1/4 COIL PL 1.23
12	781153	2	BUSHING, UHMW
13	110551	1	PUMP IDLER ARM
14	786848	1	PULLEY, IDLER 4"OD X .6
15	025296	2	FW .760X 1.625X.08 ZNYC
16	601084	1	SB .750X 2.000 SH.625-11
17	028118	1	FW .625X1.00X.134 ZNYC
18	781872	1	CS .625-11X1.25 HX G5 Z
19	601838	1	BELT, A 58.5" EL

NOTES:

1. Torque to 100 ft-lbs.
2. Spring tension, hook to hook is 5.4"-6.4" (see detail).

Hydraulic System



Hydraulic System

INDEX NO.	PART NO.	QTY.	DESCRIPTION
20	710087	8	CS .312-18X2.500 HX G5
21	601503	2	CB .250-20 X .625 ZNYC
22	602228	2	TOW LINK ROD
23	111157	2	PLATE, TS TOW VALVE
24	111616	1	TOW VALVE BRACKET, LS (NOT SHOWN)
25	111617	1	TOW VALVE BRACKET, RS
26	768515	6	FW .281X.625X.051/.080H
27	068551	4	NT .250-20 HXZY NL
28	041988	2	SPRING LC-042F-5
29	601219	2	FITTING, 90 - 9/16 SAE
30	601683	1	ZT2800, RH TRANS
31	601682	1	ZT2800, LH TRANS
32	016410	2	CS .375-16X2.00 G5 ZNYC
33	767954	2	FW .406X .812 X.060 SAE
34	781922	2	BALL STUD
35	110537	1	ZT SPACER TUBE
36	110731	1	CHARGE PUMP COVER, RH
37	110730	1	CHARGE PUMP COVER, LH
38	000331	6	WIRE TIE, SMALL/SHORT

NOTES:

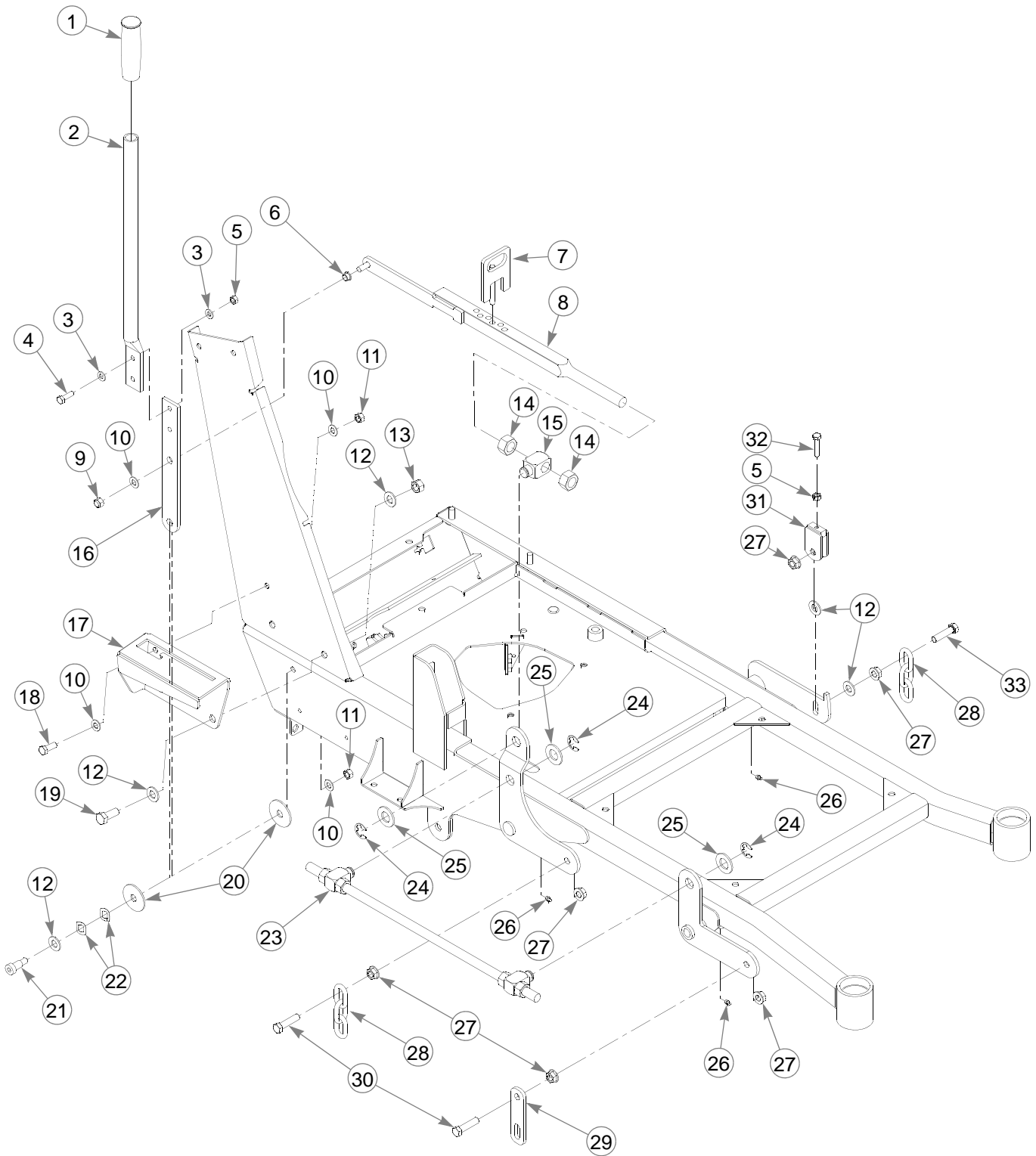
3. Torque to 17 ft-lbs.
4. Service parts available for the transaxles:

PART NUMBER	DESCRIPTION	PART NUMBER	DESCRIPTION
600767	OVERFLOW TANK CAP	601221	ZT2800 BRAKE ARM - 2007
600972	BRAKE ARM RETAINER CLIP	601433	4-BOLT HUB KIT SDFST
600974	RIGHT FILTER GUARD	602094	ZT2800 FAN/PULLEY KIT
600975	LEFT FILTER GUARD	602208	SPRING, EXTENSION RTN
600976	FILTER, OIL		

Section 3

Deck Lift	3-2
Deck Mounting Hardware	3-4
Cover	3-8

Deck Lift

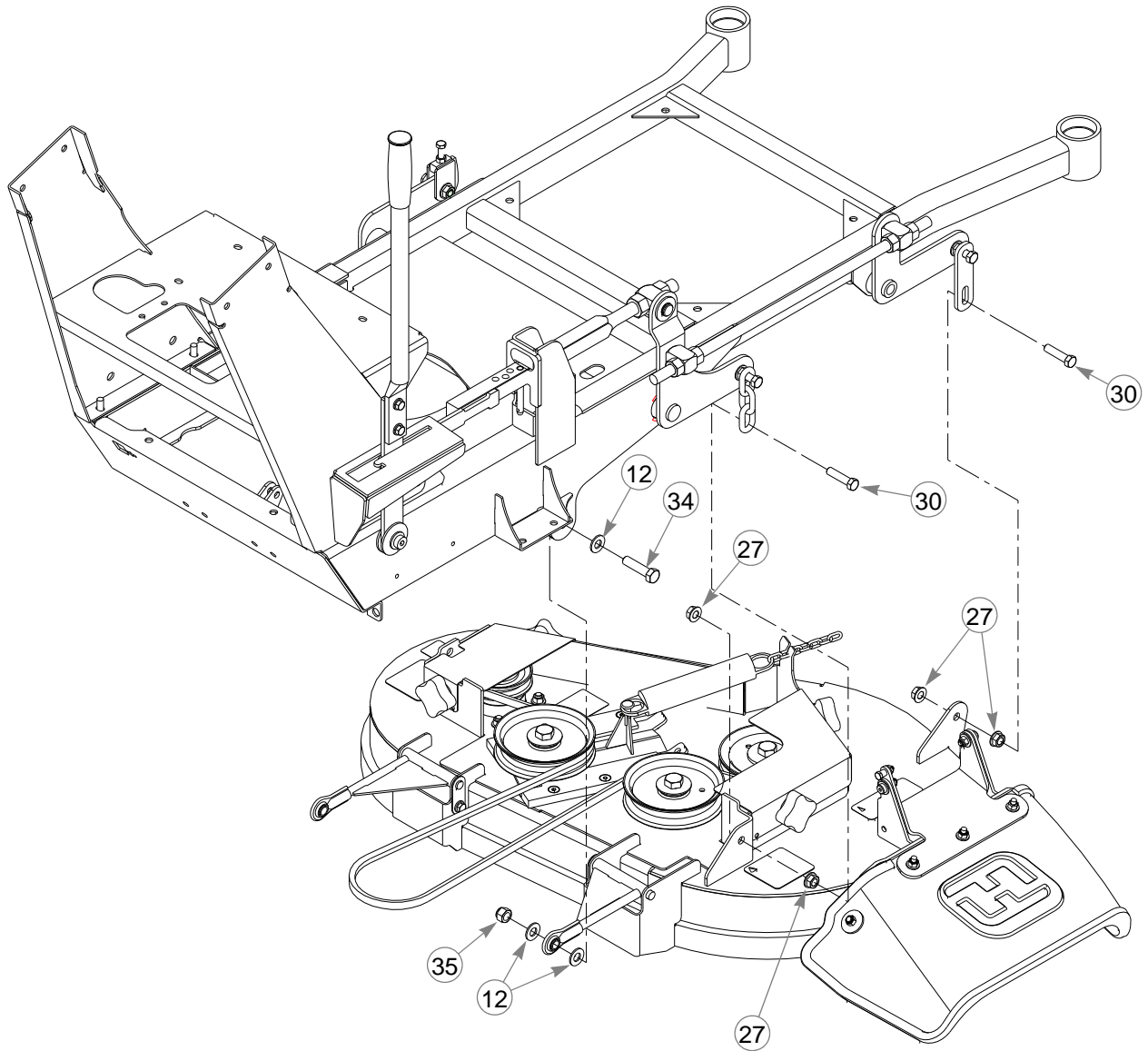


Deck Lift

INDEX NO.	PART NO.	QTY.	DESCRIPTION
1	792317	1	GRIP
2	110570	1	DECK LIFT HANDLE
3	768523	4	FW .343X.687X.051/.080H
4	036236	2	CS .312-18X1.000 HX G5
5	034272	3	NT .312-18 HX G5 ZNYC
6	765339	1	BUSHING
7	348284	1	STOP, HEIGHT ADJ
8	110529	1	DECK INDICATOR
9	086660	1	NT .375-16 HXZY NL
10	767954	4	FW .406X .812 X.060 SAE
11	054502	2	NT .375-16 HX GRD 5 ZNY
12	767962	13	FW .531X 1.063X.090 SAE
13	008193	2	NT .500-13 HX G5 ZNYC
14	008417	2	NT .750-10 HX G5 ZNYC
15	781930	1	BLOCK, DECK LIFT MT 3/4"
16	110530	1	LOWER HANDLE
17	110775	1	DECK LIFT COVER
18	036244	1	CS .375-16X1.000 HX G5
19	705954	2	CS .500-13X1.25 HX G5 Z
20	263517	2	BEARING DISC
21	728550	1	SB .50X.75SH .375-16TD
22	601953	2	WASHER, WAVY
23	601942	1	DECK LIFT ROD
24	781294	3	CLIP E, 1.00 X.625X .05
25	601681	3	FW .781X1.50X.120 ZNYC
26	015495	3	GREASE FITTING STRAIGHT
27	704643	12	NT .437-14 HX FLG ZN
28	360131	2	DECK LIFT CHAIN
29	111538	1	DECK LIFT LINK
30	055749	5	CS .437-14X1.750 HX G5
31	348458	1	YOKE, DECK LEVELER
32	756270	1	CS .312-18X1.50 FLTHR G
33	781831	1	CS .437-14X1.750 FULTH

NOTES:

Deck Mounting Hardware



INDEX NO.	SERVICE PART NO.	QTY.	DESCRIPTION
34	078949	2	CS .500-13X 2.00 GR ZN
35	781567	2	NT .50-13 HX LK NY

NOTES:

MOWERDECK LEVELING PROCEDURE

(Refer to FIG. 1)

1. Check tire pressures (8 - 12 psi) to make certain they are properly inflated before starting to level deck.
NOTE: Stop engine. Make sure deck clutch switch is in the down (OFF) position. Remove ignition key. Place control levers in the brake position.
NOTE: See deck leveling illustration at the end of the chapter to locate part name.
2. Place mower with deck installed on deck installation fixture.
3. Factory cutting height is set at 3¼" by placing the height stop in the 3" hole, with the flat side of height adjusting stop against the deck stop bracket.
4. Clamp the height stop against the deck stop bracket.
5. Loosen all nuts on the deck lift threaded rods, and the hardware holding on the deck leveler yoke (on the left rear), until ALL the deck lift chains are loose, AND the deck is sitting tightly on all four deck installation fixture.
6. Loosen the two nuts on the front of height indicator bar so that the bar has play.
7. Start the leveling process on the RIGHT REAR of the mower.
8. Set the amount of threads protruding on the deck lift rod from the lift block at approximately 1.5".
9. Jam both nuts against the block.
10. Push or pull on the deck lift bell crank until the chain on the RIGHT REAR just becomes tight, making sure that the deck stays tight against the deck installation blocks.
11. While keeping the chain tight, tighten the nuts against the deck lift block on the height indicator.
12. Go to the LEFT REAR of the mower.
13. Loosen the 5/16" jam nut on the deck leveler yoke, and back the adjuster bolt out to allow the deck leveler yoke to move up and down freely, and there is slack in the deck lift chain.
14. Tighten the adjuster bolt until the chain just becomes tight, making sure that the deck stays tight against the deck installation blocks.
15. Tighten the adjuster bolt jam nut to prevent the deck leveler yoke from moving.
16. Tighten the hardware holding the chain and deck leveler yoke onto the deck lift arm.
17. Go to the RIGHT FRONT of the mower.
18. Make sure that there is still slack in the chain. If not, loosen the two nuts on the block holding the threaded rod until there is slack in the deck lift chain.
19. Tighten the appropriate nut until the chain just becomes tight, making sure that the deck stays tight against the deck installation blocks.
20. Tighten the other nut on the opposite side of the block, and jam them tightly together against the block.
21. When completed, all chains should be tight, and deck should still be resting on the deck installation blocks.

NOTE: Wheels are not shown.

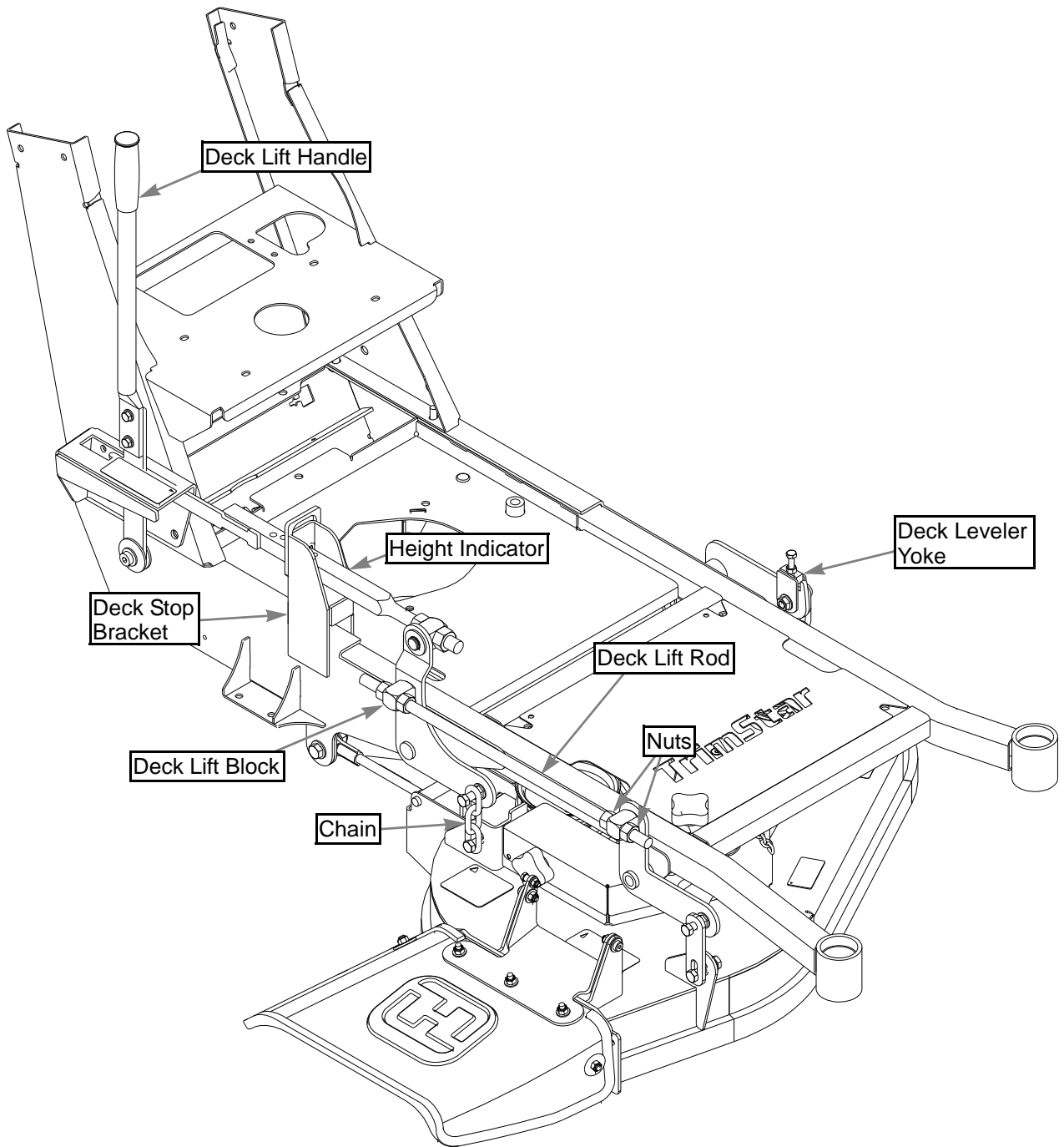
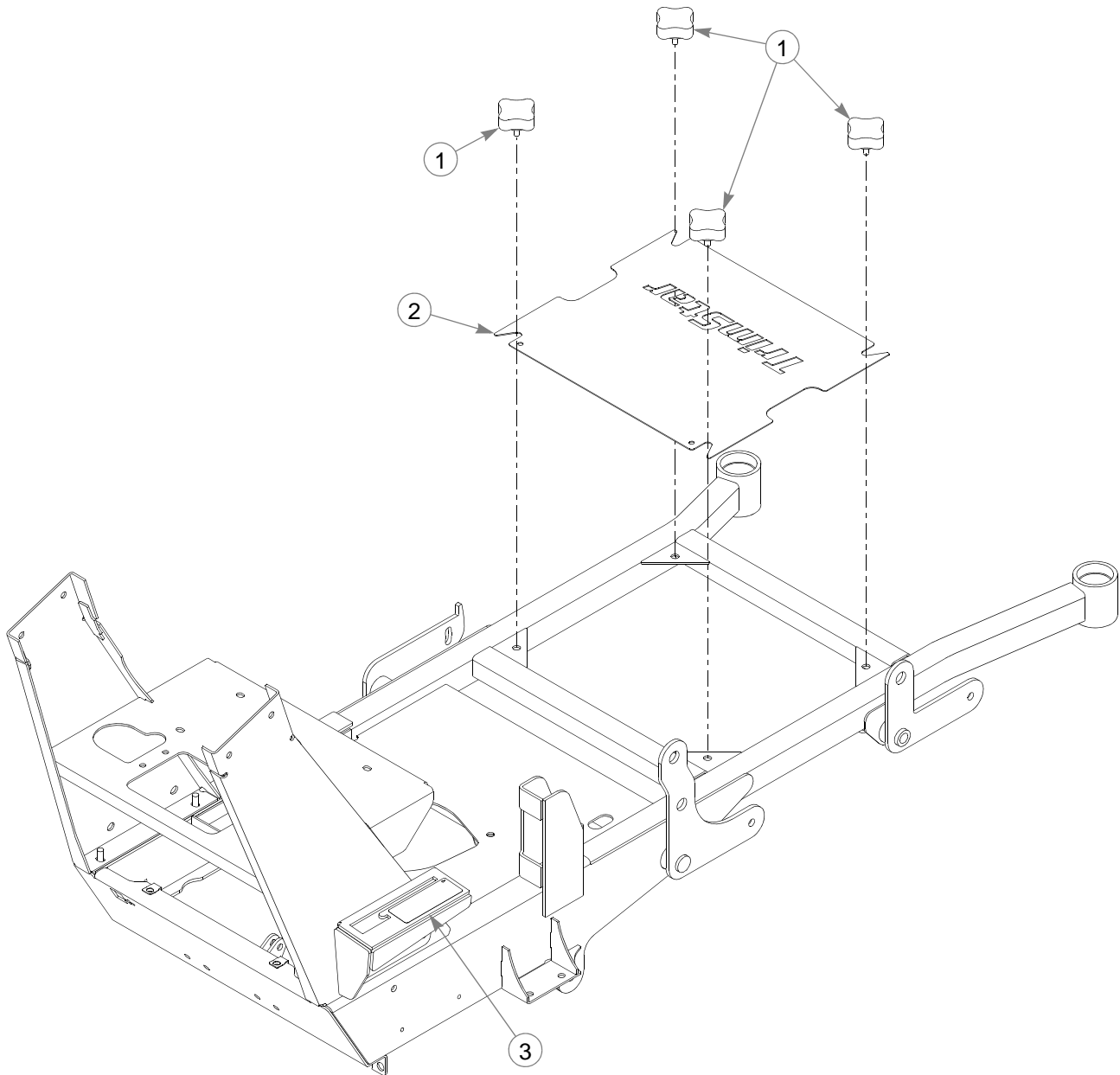


FIG. 1

This page intentionally left blank.

Cover



Cover

INDEX	PART NO.	QTY	DESCRIPTION
1	792002	4	KNOB, 5/16-28 X 3/4" MALE
2	110535	1	DECK COVER, 36
3	602061	1	DECAL, DECK HEIGHT INDICATOR

NOTES:

Section 4

Engine, 15HP KAW	4-2
Fuel System	4-4
Instrument Panel	4-6
Throttle	4-14
Park Brake	4-16

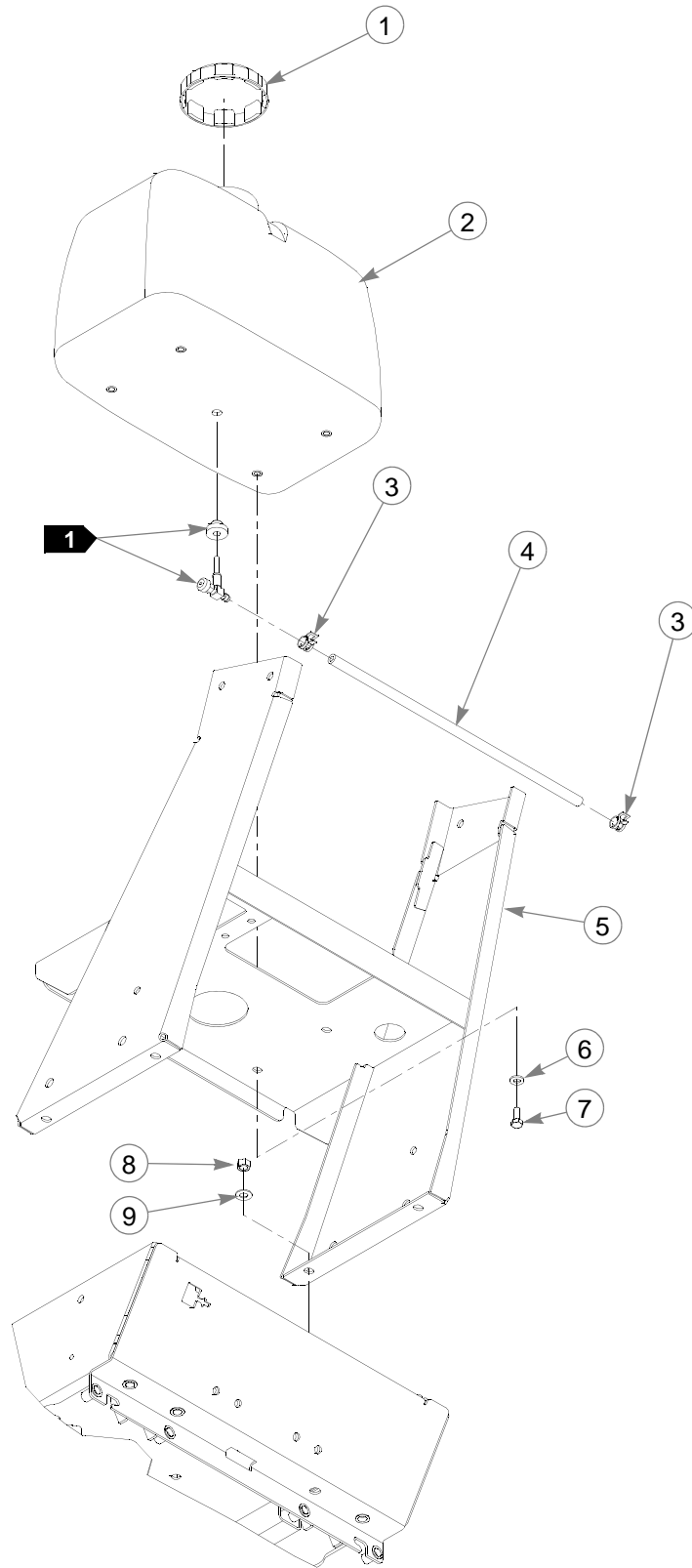
Engine, 15HP KAW

INDEX NO.	PART NO.	QTY.	DESCRIPTION
1	791343	1	ENGINE, KAWASAKI 15HP
2	034272	5	NT .312-18 HX G5 ZNYC
3	768523	15	FW .343X.687X.051/.080H
4	052837	4	CS .312-18X1.500 HX G5
5	064345	1	CS .312-18X2.000 HX G5
6	034280	5	CS .312-18X .750 HX G5
7	110736	1	ENGINE PLATE COVER
8	796524	1	VALVE,OIL DRAIN M20X2.5
9	787713	1	HOSE, 0.50" LOW PRESSURE, 13" LONG
10	791558	2	GASKET, EXHAUST 15&17HP
11	017004	4	LW .312 MED SPRING ZNYC
12	782664	4	NT M8-1.25 HX STAINLESS
13	601799	1	MUFFLER, 15HP KAW
14	000331	1	WIRE TIE, SMALL/SHORT
15	111557	1	CLUTCH ANCHOR PLATE
16	791251	1	HARNES, CLUTCH PIGTAIL
17	784918	1	BUMPER, RUBBER
18	712372	1	KEY 1/4 SQ X 0.66 LG(FS)
19	799429	1	PULLEY, A SEC, 4.5 OD
20	601325	1	CLUTCH, WARNER
21	763417	1	FW .454X1.50X.250
22	785048	1	CS .437-20X3.00 HX G5 Z

NOTES:

1. Part of wiring harness .
2. Torque to 45-48 ft-lbs. Replace (do not reuse) capscrew if removed or loosened. Use only hand tools to install this fastener.
3. Engine oil capacity: See engine owner's manual.

Fuel System



Fuel System

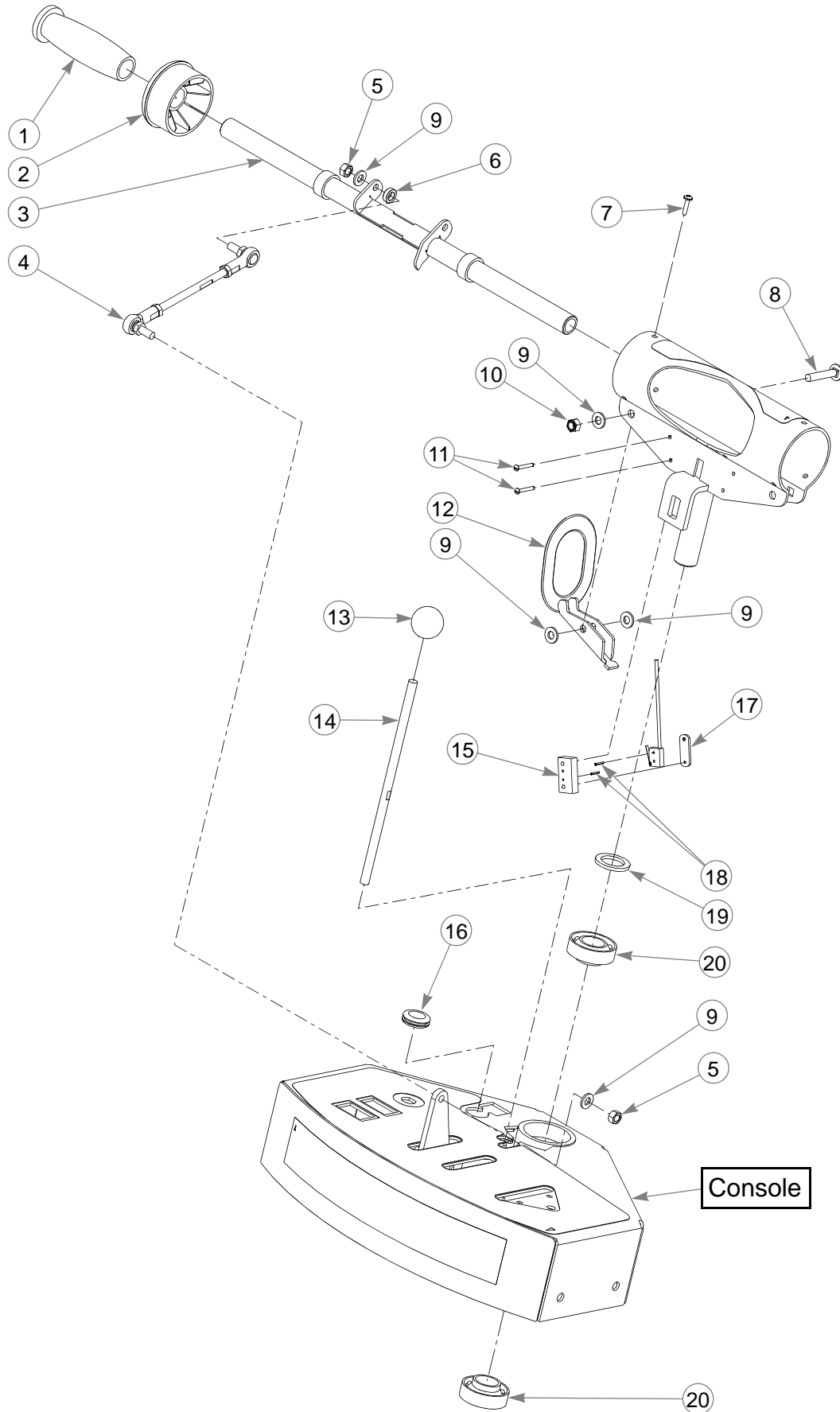
INDEX NO.	PART NO.	QTY.	DESCRIPTION
1	779306	1	FUEL CAP,3.5"
2	792044	1	FUEL TANK
3	000323	2	CLIP
4	015818	1	FUEL LINE 17"
5	110511	1	CONSOLE SUPPORT
6	768523	4	FW .343X.687X.051/.080H
7	034280	4	CS .312-18X .750 HX G5
8	054502	4	NT .375-16 HX GRD 5 ZNY
9	767954	4	FW .406X .812 X.060 SAE

NOTES:NOTES:

1. Valve and grommet included with new fuel tank.
2. Service parts available for the fuel tank:

PART NUMBER	DESCRIPTION	PART NUMBER	DESCRIPTION
785295	FLANGE GROMMET	783944	FUEL SHUT-OFF VALVE

Instrument Panel

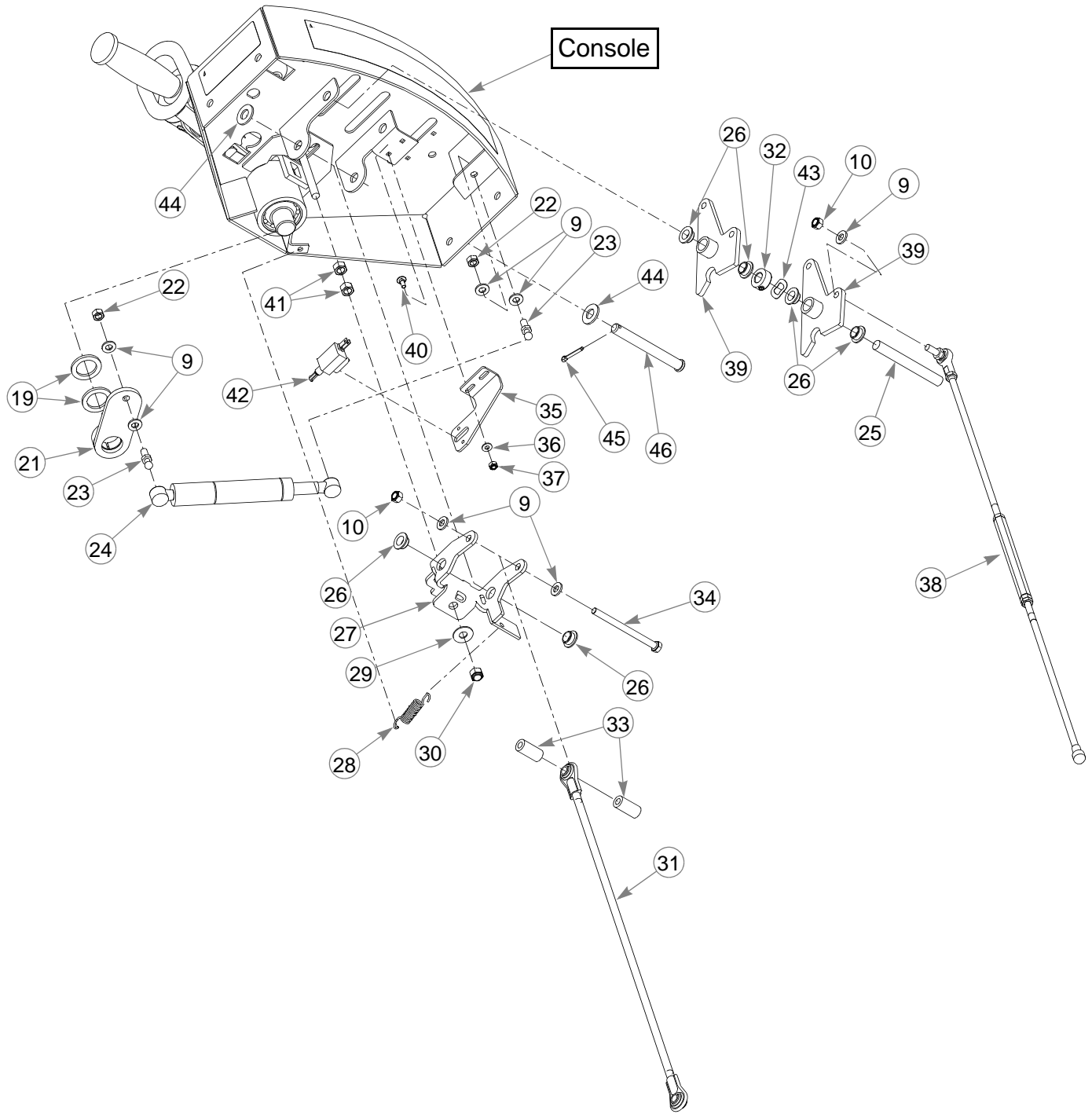


Instrument Panel

INDEX NO.	PART NO.	QTY.	DESCRIPTION
1	771139	2	GRIP, .875 X 4.562 BLK
2	773556	2	BEARING, STEERING
3	110766	1	STEERING BAR
4	785766	2	STEERING ROD, ADJUSTER
5	041152	4	NT .312-24 HX ZNYC
6	601839	2	PIVOT SPACER BUSHING
7	769299	6	SC #10 X.750 PHILLIPS T
8	779157	2	CB .312-18X 1.750 SHTNK
9	768523	18	FW .343X.687X.051/.080H
10	058776	5	NT .312-18 HXZY NL
11	077842	4	MS # 6-32 X1.000 RD SL
12	341826	2	ARM
13	043299	1	KNOB,1.31RD .375-16X50
14	110645	1	NEUTRAL LOCK HANDLE ROD
15	342378	2	SPACER, SWITCH WB
16	047456	1	GM .750X.188X1.00X.12
17	039693	2	WN #6-32 X 1.00 TP 1116
18	779165	4	RP .078X .50 LONG ZN
19	045765	3	FW 1.030X 1.500X.134 ZN
20	784223	2	BEARING

NOTES:

Instrument Panel



Instrument Panel

INDEX NO.	SERVICE PART NO.	QTY.	DESCRIPTION
21	314351	1	ARM W/AM WB DAMPNER
22	034272	2	NT .312-18 HX G5 ZNYC
23	781922	2	BALL STUD, DAMPER
24	788349	1	DAMPER, CENTERING
25	305086	1	PIVOT PIN
26	768259	6	BUSHING,IGUS#0810
27	110932	1	NEUTRAL LOCK YOKE
28	034652	1	SPRING 2.5
29	076422	1	FW .406X 1.000X.06 ZNYC
30	086660	1	NT .375-16 HXZY NL
31	601798	1	BRAKE ROD ASSY
32	788554	1	LOCK COLLAR, .500X1.000
33	110647	2	NEUTRAL LOCK SPACER
34	785113	1	CS .312-18X4.250 HX G5
35	110646	1	NEUTRAL SWITCH BRKT
36	704932	2	FW .219X .500X.048 ZNYC
37	059832	2	NT #10-24 HX NL ZN
38	601952	2	PUMP ADJUSTMENT ROD
39	110639	2	BELLCRANK
40	601098	2	CB 10-24 X .500 ZYNC
41	054502	6	NT .375-16 HX GRD 5 ZNY
42	792374	1	SWITCH,PLUNGER SNAP MOUNT
43	601953	1	WAVY WASHER
44	767962	2	FW .531X 1.063X.090 SAE
45	017251	1	CP .156DX1.000 LG HML Z
46	073338	1	CE .500X4.50 .156X4.34

NOTES:

STEERING CONTROL ADJUSTMENT.

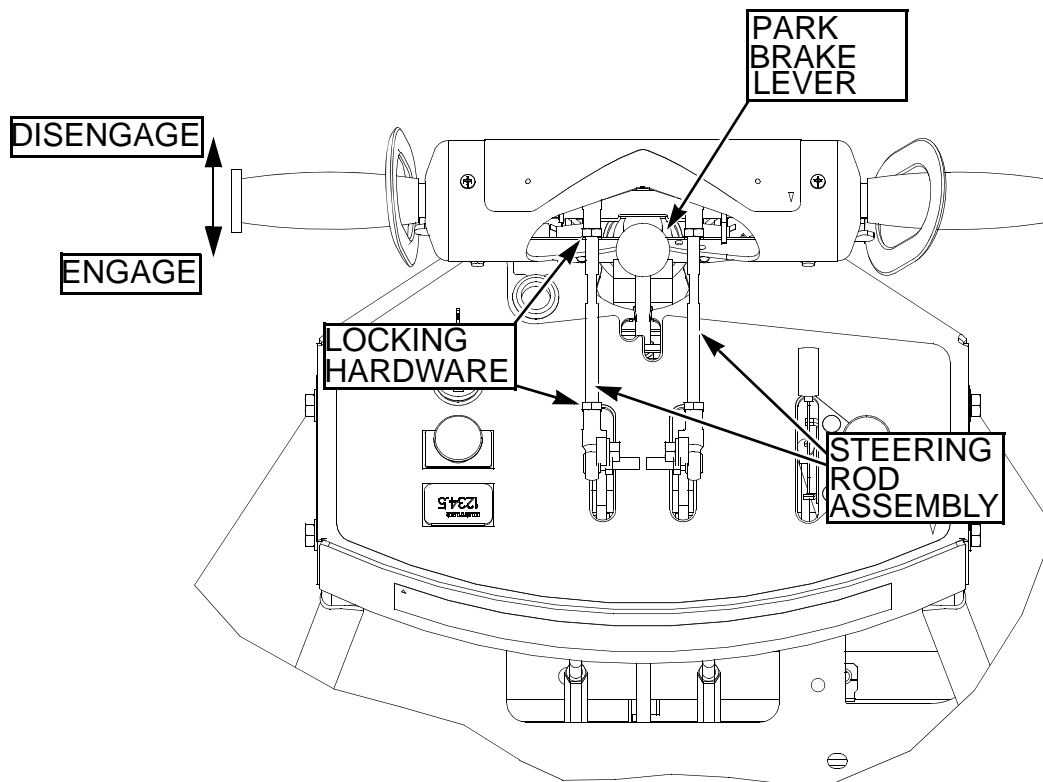


FIG. 1

NEUTRAL ADJUSTMENT

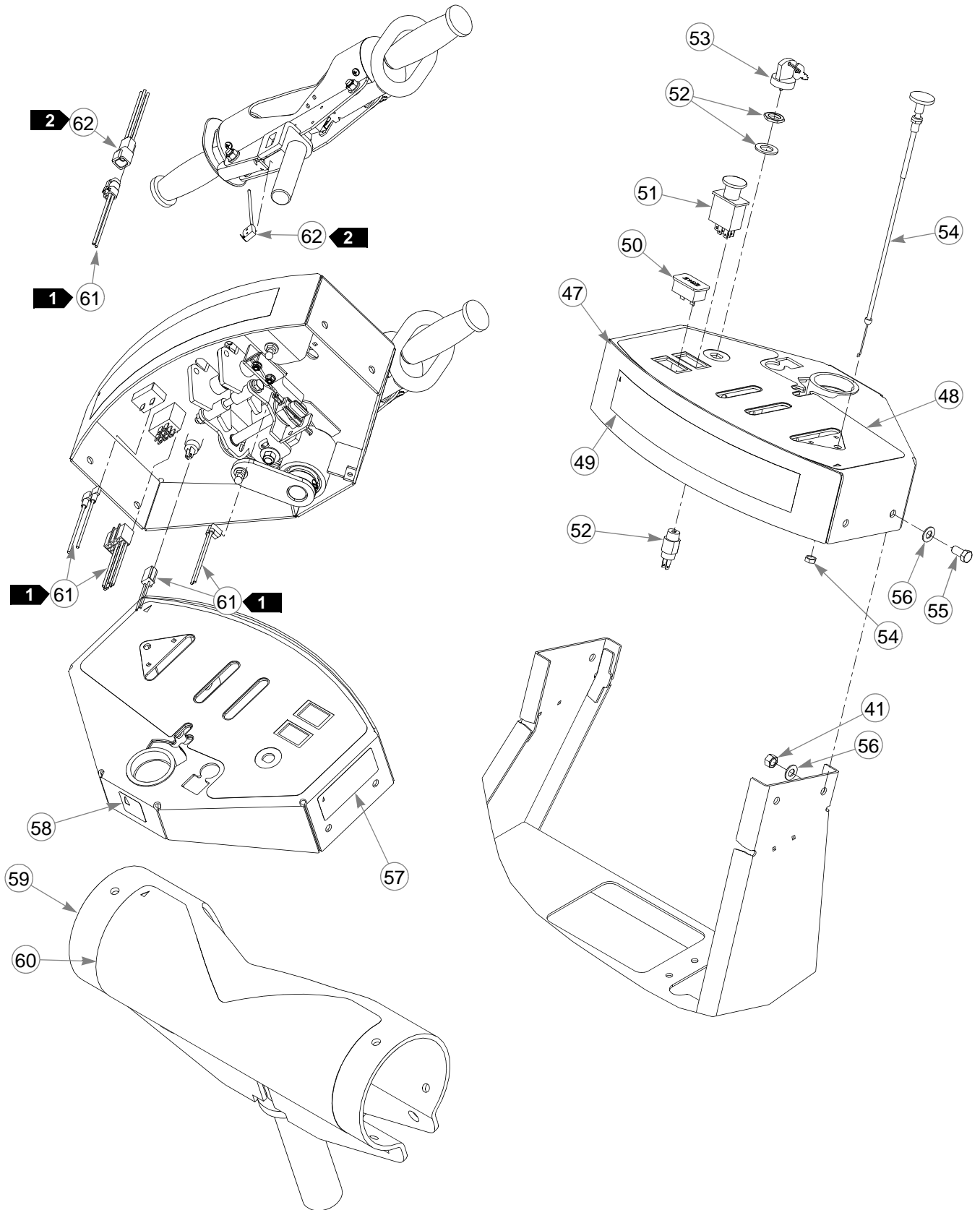
1. Remove brake link from lower brake bell crank.
2. With the mower on the assembly stand, place the H-bar lock in the run position with the engine running.
3. If rear wheels rotate forward or rearward, loosen the locking hardware on the turnbuckle assembly
4. Tighten or loosen the turnbuckle until rear wheel comes to a stop. Retighten locking hardware.
5. Neutral should now be set.
6. Release park brake.
7. With engine running, rotate H-Bar forward, and then into reverse.
8. Wheels should both return to neutral when H-Bar is pulled forward out of reverse. If not, repeat step 2-4 until they do. Return brake lever to park position and check to make sure wheels are not rotating.
9. If wheels rotate, repeat steps 1- 8.

DRIVE STRAIGHT LINKAGE ADJUSTMENT

1. With mower on assembly stand (wheels off the ground), and engine running, move park brake lever into drive position.
2. Check drive wheel rotation speed using contact tachometer.
3. Loosen the locking hardware on the top steering rod assembly on the side that is rotating slower.
4. Lengthen the steering rod assembly by rotating the center adjustment rod until both wheels are rotating at the same speed.
5. Tighten the locking hardware on the steering rod assembly and verify all locking hardware is tight.
6. Recheck wheel speed and repeat steps 3 through 5 as necessary.

This page intentionally left blank.

Instrument Panel



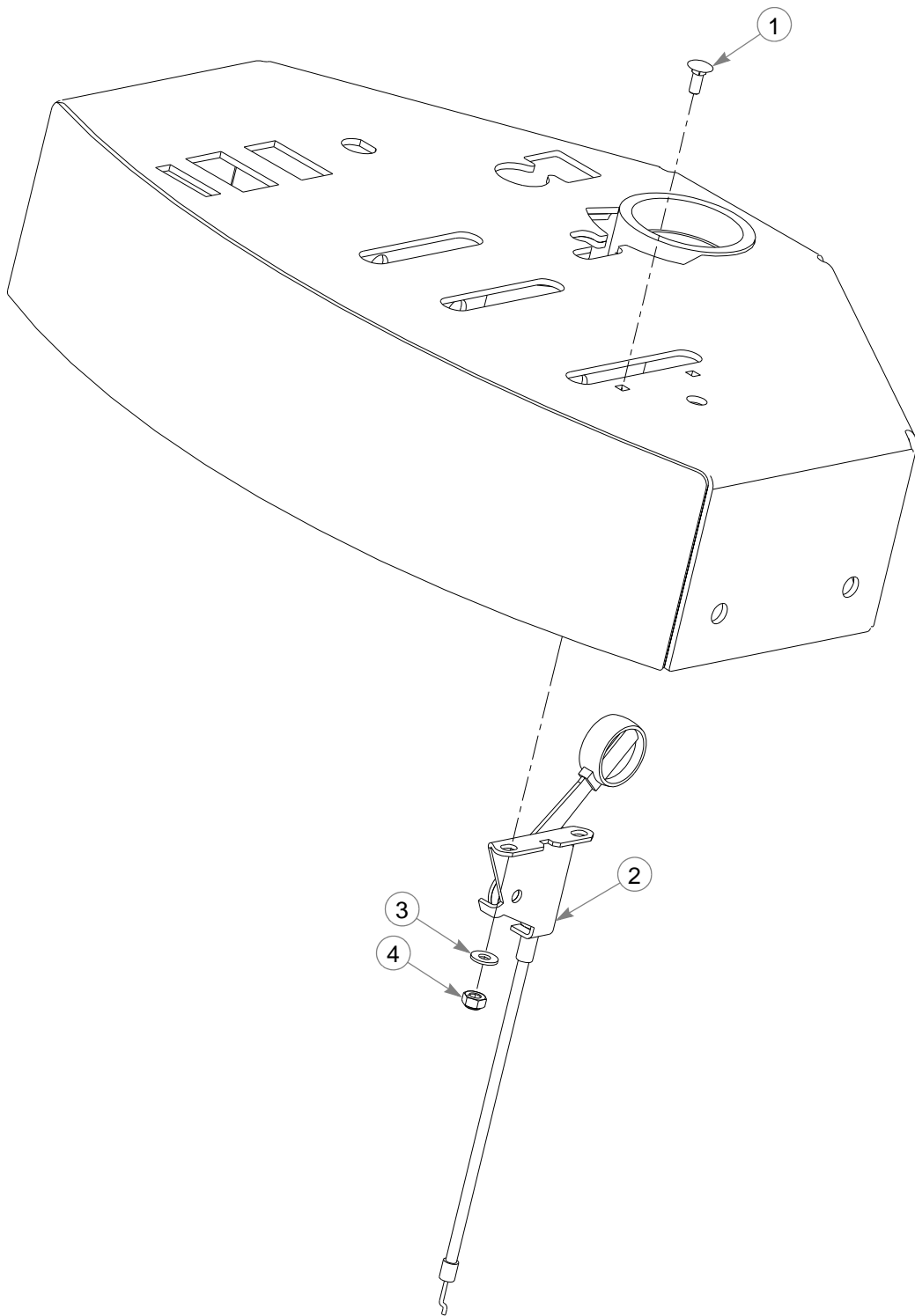
Instrument Panel

	INDEX NO.	PART NO.	QTY.	DESCRIPTION
3	47	550072	1	CONSOLE TS SERV ASSY
	48	601934	1	DECAL, TS INST PNL NO-ES
	49	788828	1	DECAL, TRIMSTAR ID
	50	769166	1	HOUR METER
	51	776476	1	SWITCH, PTO
	52	776518	1	IGN SWITCH
	53	785808	1	KEY ASSEMBLY
	54	601097	1	CABLE, CHOKE
	55	055822	4	CS .375-16X .750 HX G5
	56	767954	8	FW .406X .812 X.060 SAE
	57	601967	1	DECAL, ENGINE COMPART
	58	727172	1	DECAL 'MADE IN U.S.A.'
4	59	550071	1	H-BAR TS SERV ASSY
	60	771030	1	DECAL, H-BAR STEERING
	61	601970	1	WIRE HARNESS
	62	601972	1	WIRE HARNESS OPC

NOTES:

1. Part of 601970 (Wire Harness).
2. Part of 601972 (Wire Harness Operator Presence Control).
3. Item 47 includes (items 48, 49, 57 and 58).
4. Item 59 includes (item 60).

Throttle

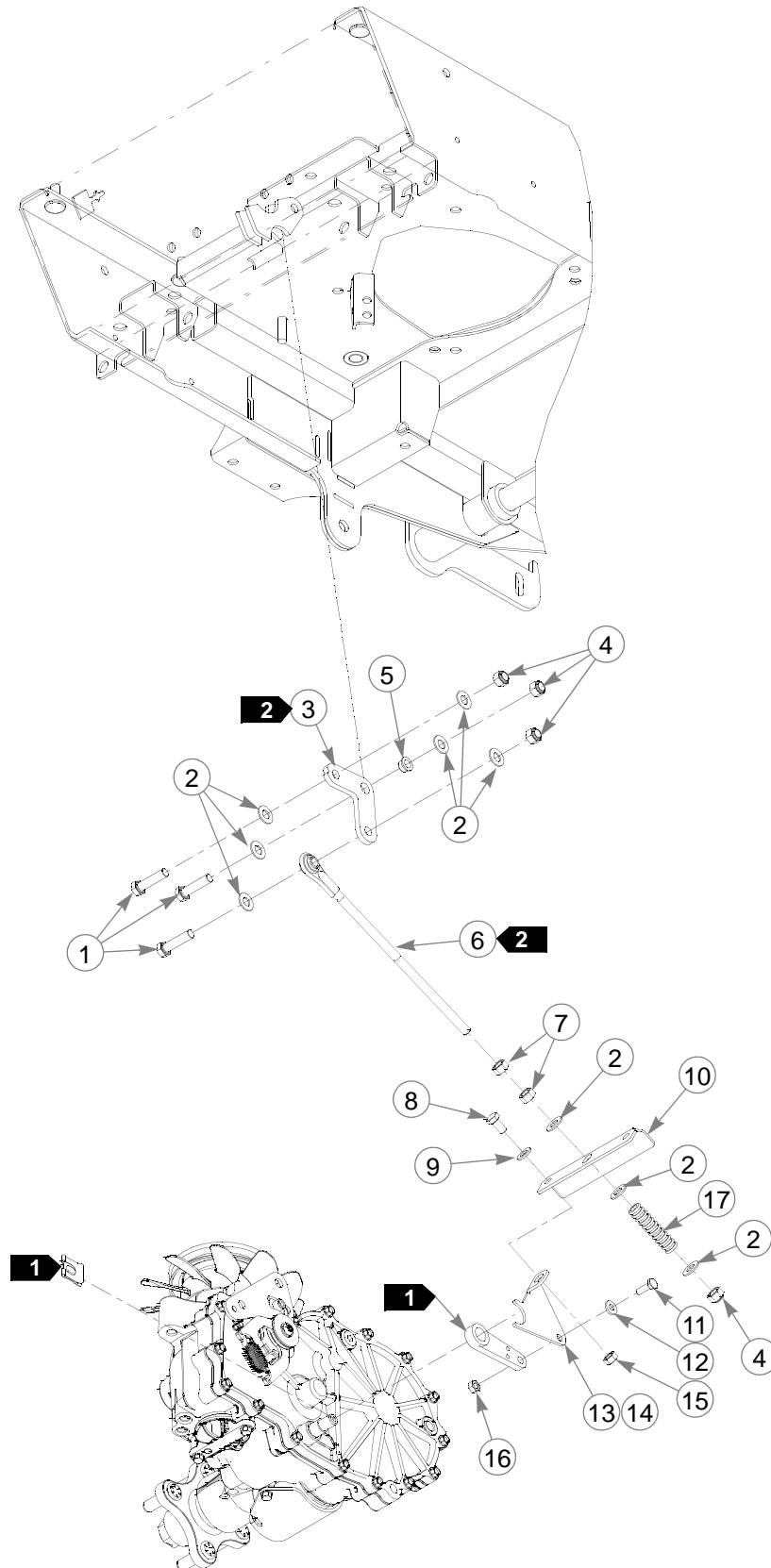


Throttle

INDEX NO.	PART NO.	QTY.	DESCRIPTION
1	601098	2	CB 10-24 X .500 ZYNC
2	778365	1	CABLE, THROTTLE
3	704932	2	FW .219X .500X.048 ZNYC
4	059832	2	NT #10-24 HX NL ZN

NOTES:

Park Brake



Park Brake

INDEX NO.	PART NO.	QTY.	DESCRIPTION
1	080655	3	CS .375-16X1.500 HX G5
2	767954	9	FW .406X .812 X.060 SAE
3	110539	1	LOWER BRAKE BELLCRANK
4	086660	4	NT .375-16 HXZY NL
5	765339	1	IGUS BUSHING #0608
6	601710	1	LOWER BRAKE ROD ASSY
7	054502	2	NT .375-16 HX GRD 5 ZNY
8	064006	2	CS .312-18X .625 HX G5
9	768523	2	FW .343X.687X.051/.080H
10	110538	1	BRAKE PULL BRACKET 36 TS
11	055939	2	CS .250-20X .750 HX G5
12	768515	2	FW .281X.625X.051/.080H
13	109202	1	BRAKE SPRING LINK, RIGHT SIDE
14	109203	1	BRAKE SPRING LINK, LEFT SIDE
15	034272	2	NT .312-18 HX G5 ZNYC
16	024927	2	NT .250-20 HX GR.5 ZNYC
17	784421	1	BRAKE TENSION SPRING

NOTES:

1. Items supplied with ZT2800 transmission.

PARK BRAKE ADJUSTMENT

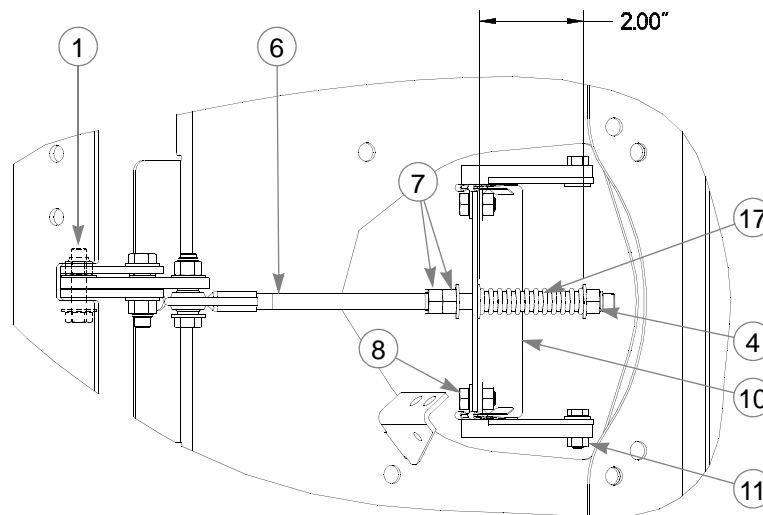


FIG. 2

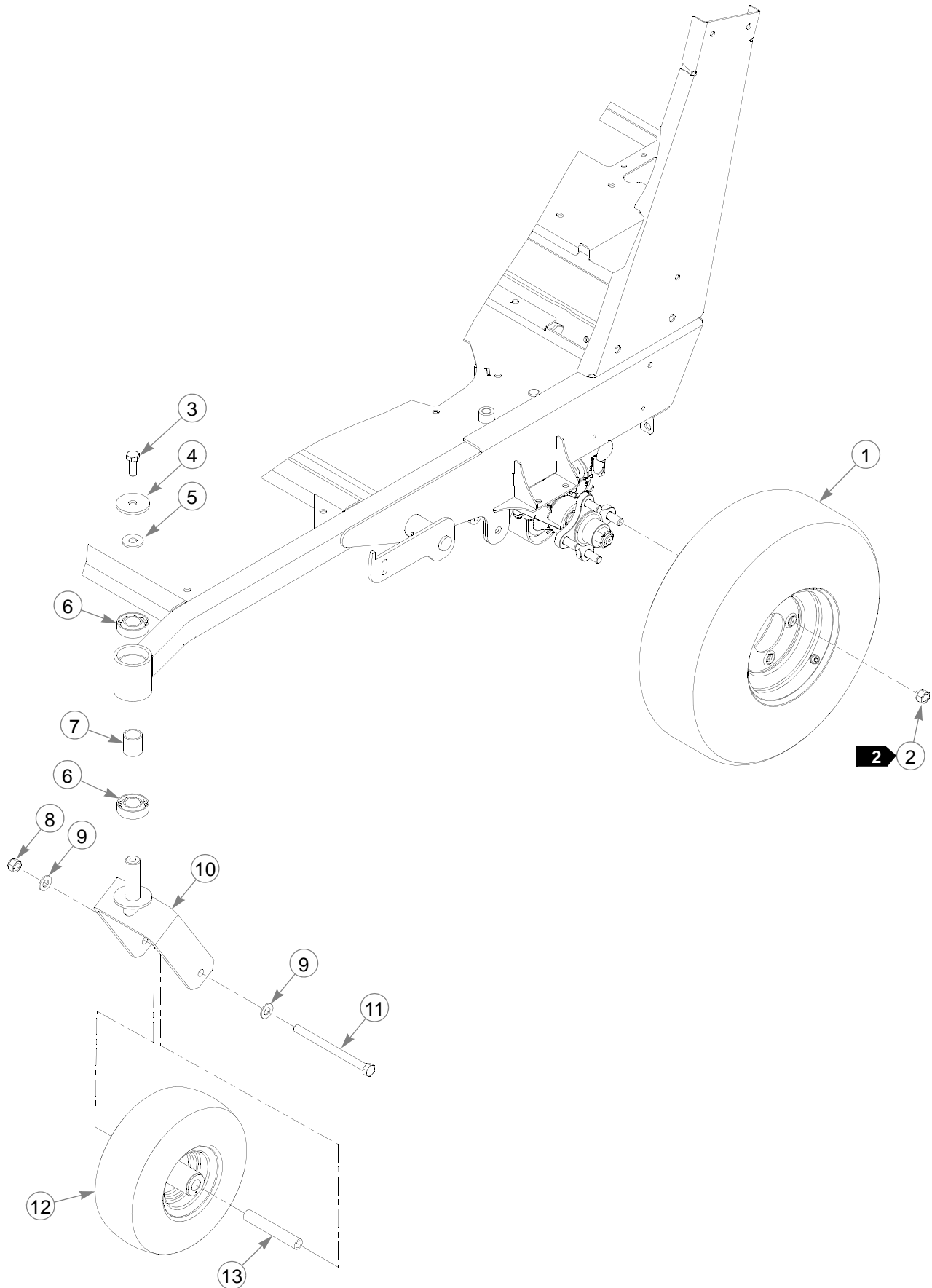
1. Item 8 (064006) and 11 (055939), and associated hardware, should be loose. After final adjustments are made, tighten all the associated hardware.
2. Assemble item 7 (054502) nuts onto item 6 (601710) to the end of the threads on the brake link assembly. Leave these nuts loose at this time.

-
3. Place washer onto brake link, and slide through hole in item 10 (110601) brake pull bracket. Assemble item 6 (601710) brake link assembly onto brake item 3 (110539) bell crank.
 4. Assemble remaining hardware and item 17 (784421) spring onto brake link. Install item 4 (086660) onto end of brake link (601710).
 5. Place the H-bar handle in the neutral position and the park brake lever in the engaged position.
 6. Tighten item 4 (086660) to the 2.00" dimension shown.
 7. Check engagement of internal park brake pawl by manually rotating transmission axle in both directions. If pawl is engaged, the axle should not rotate.
 8. Tighten item 8 (064006) on both sides of item 10 (110601) brake pull bracket.
 9. Tighten item 11 (055939) on both sides.
 10. Adjust item 7 (054502) so that there is .30" between the washer and the FIRST nut. With two wrenches, tighten the second nut down to the first, maintaining the .30" dimension.
 11. Brakes are now set.
 12. Place the H-bar handle in the run position and the park brake lever in the disengaged position.
 13. The washer under the double jam nuts (item 7, 054502) should still be free to rotate, and have approximately .06" clearance. If not, readjust jam nuts to this dimension.
 14. With brakes still in the disengage/run position, verify that wheels rotate freely without brakes grabbing. If brakes are grabbing, adjust item 7 (054502) locking nuts closer to end of brake rod assembly until wheels rotate freely. Re-engage brake lever to ensure that brakes are set.
 15. Repeat engagement and disengagement as required to ensure that brakes are set in the engaged position, and are off in the run position.

Section 5

Tires and Wheels	5-2
Drive Tire Breakdown	5-4
Caster Wheel Breakdown	5-5

Tires and Wheels



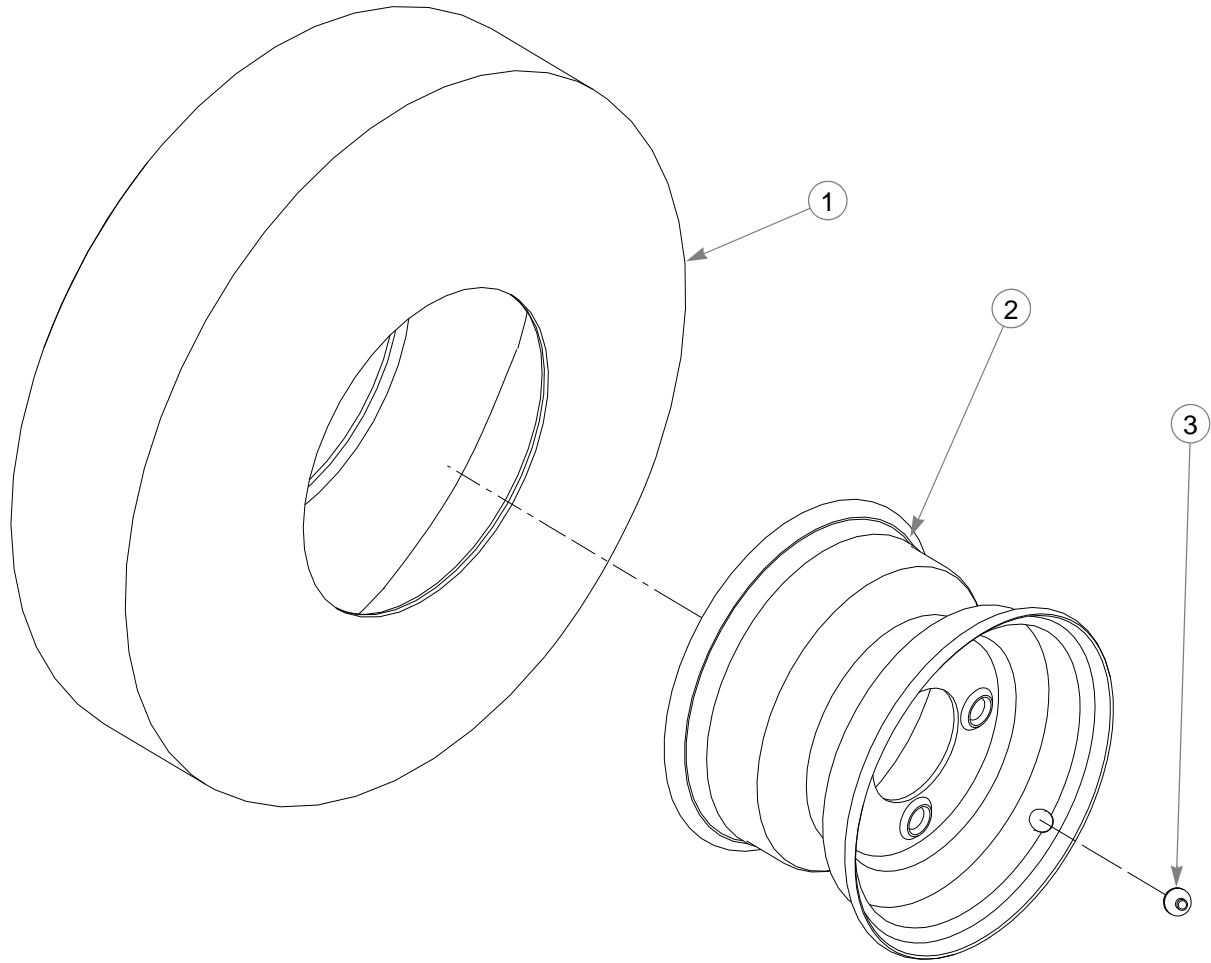
Tires and Wheels

	INDEX NO.	PART NO.	QTY.	DESCRIPTION
3	1	785345	2	TIRE/WHEEL, 18X6.50-8
	2	061077	8	WHEEL NUT
	3	705954	2	CS .500-13X1.25 HX G5 Z
	4	344267	2	FW .510X 2.15X.187 SPL
	5	712976	2	FW .531X 1.375X.125 ZNY
	6	784223	4	BEARING
	7	784603	2	SPACER
	8	781567	2	NT .50-13 HXZY NL
	9	767962	4	FW .531X 1.063X.090 SAE
	10	339689	2	CASTER FORK
	11	042630	2	CS .500-13X6.50 HX G5 Z
1	12	788604	2	TIRE/WHEEL ASSY 11X4-5
	13	306969	2	GAGE WHEEL SPACER

NOTES:

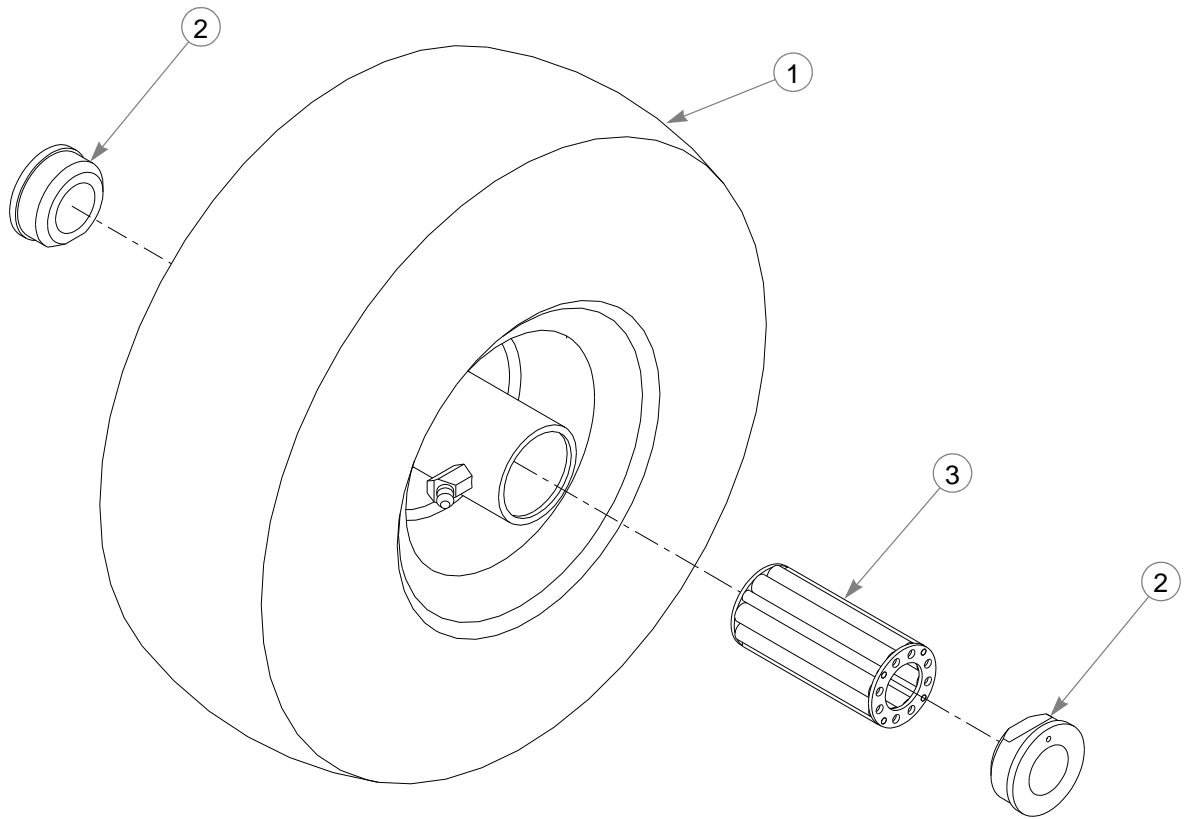
1. Apply grease to zerks (see owners manual).
2. Torque to 65-75 ft. lbs.
3. Inflate tires to 8-12 psi.

Drive Tire Breakdown



INDEX NO.	PART NO.	QTY.	DESCRIPTION
1	785337	2	TIRE 18 X 6.50-8 4 PLY
2	785303	2	WHEEL 5.35
3	019521	2	TIRE VALVE TR-412

Caster Wheel Breakdown

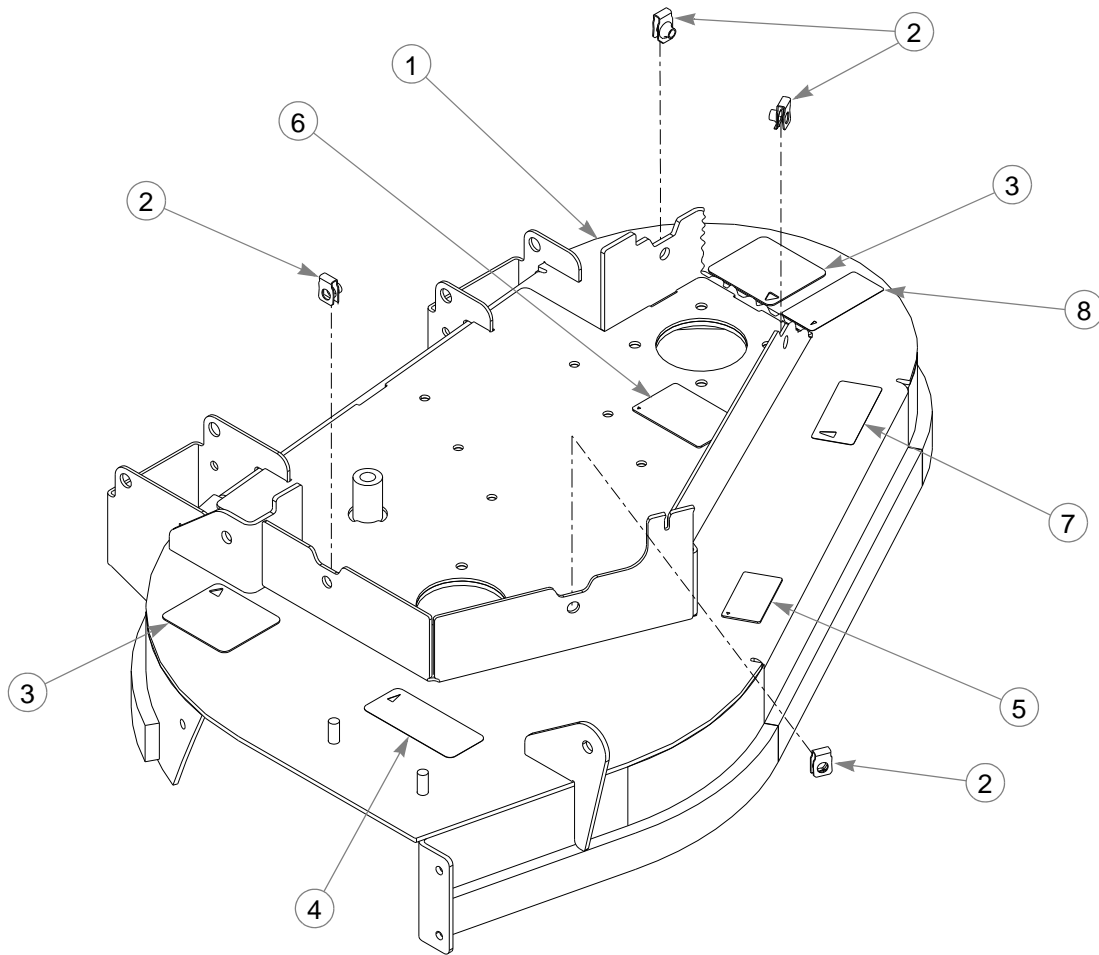


INDEX NO.	PART NO.	QTY.	DESCRIPTION
1	788604	1	TIRE/WHEEL ASSY 11X4-5
2	772806	2	BEARING CAP
3	772814	1	3/4" ROLLER BEARING

Section 6

36" Deck Decals	6-2
36" Deck Pulleys and Spindles	6-4
36" Deck	6-6
Deck Belt Routing and Tensioning	6-8
Spindle Assembly—783506.	6-10

36" Deck Decals



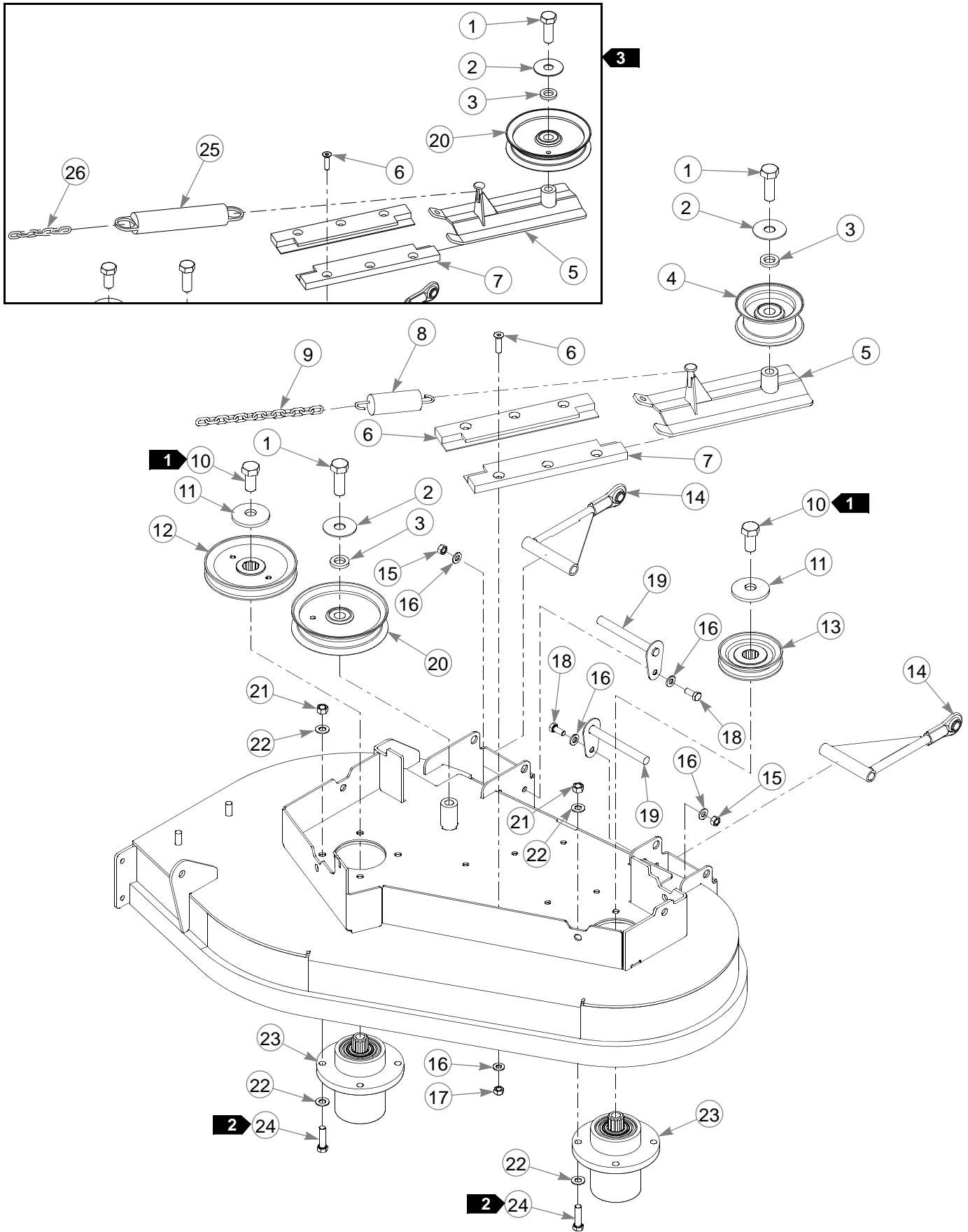
INDEX NO.	SERVICE PART NO.	QTY.	DESCRIPTION
1	550229	1	36" DECK
2	601069	4	CN .312-18X.200 MAX THK
3	601787	2	DECK WARNINGS DECAL
4	601796	1	DISCHARGE CHUTE DECAL
5	793513	1	DECAL,36"DECK ID
6	602243	1	DECAL,BELT ROUTING
7	797845	1	FUSION DECAL
8	601931	1	THROWN OBJECTS DECAL

NOTES:

- Item 1 (550229) includes items 2–8.

This page intentionally left blank.

36" Deck Pulleys and Spindles



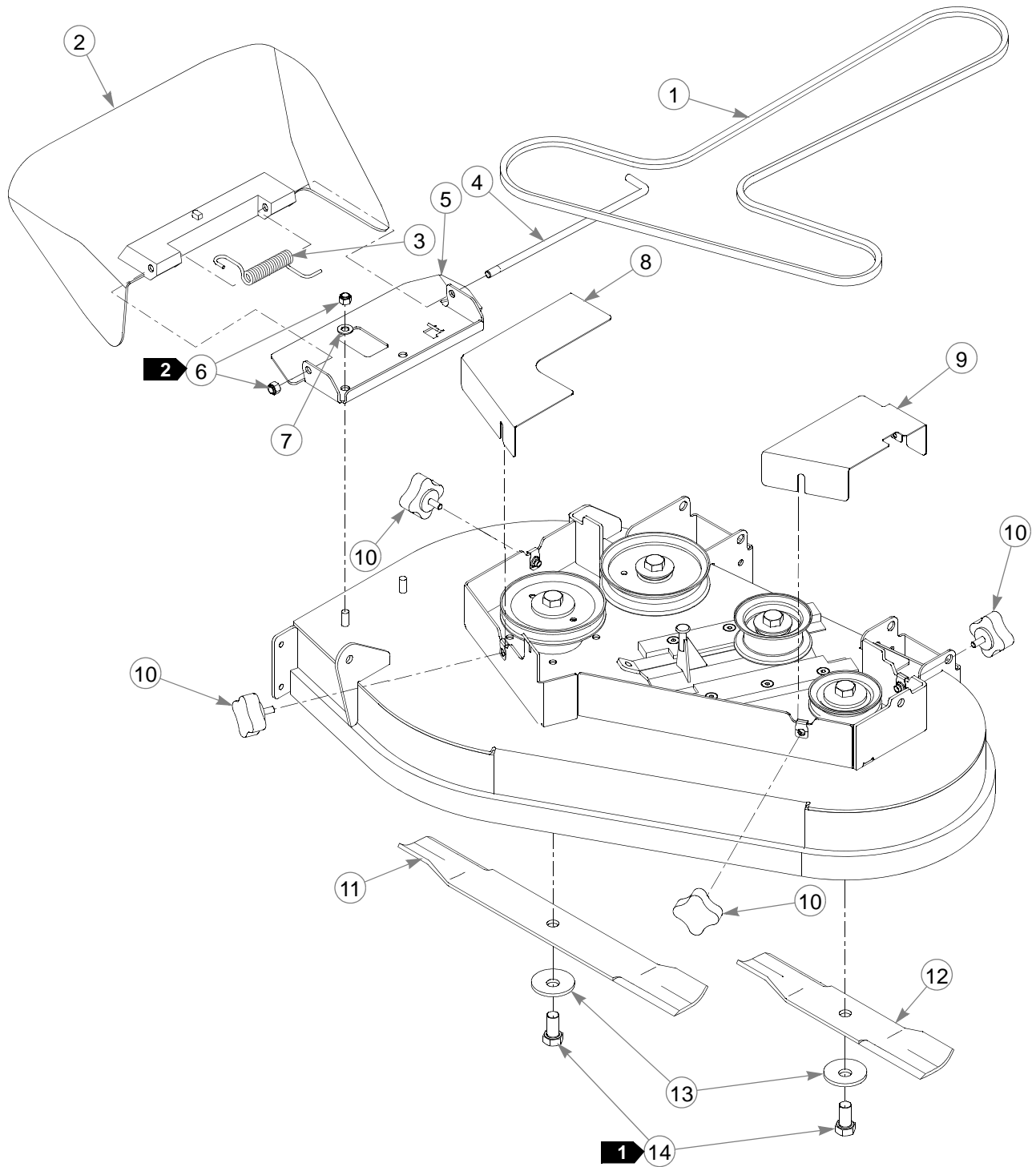
36" Deck Pulleys and Spindles

INDEX NO.	PART NO.	QTY.	DESCRIPTION
	1	025007	2 CS .625-11X1.750 HX G5
	2	046821	2 FW .656X 2.00X.078 ZNYC
	3	797449	2 FW .650X1.125X.18 ZNYCG5
3	4	601162	1 IDLER PULLEY, 3.06"
	5	105031	1 DECK IDLER
	6	784199	6 CS .312-18X1.250 FLT SH
	7	601434	2 IDLER SLIDE
	8	036384	1 IDLER SPRING
	9	259812	1 CHAIN
	10	781872	2 CS .625-11X1.25 HX G5 Z
	11	782474	2 CW .631 2.250X .187 PNT
	12	796656	1 PULLEY, 5.62 EOD, A-SEC
	13	796664	1 PULLEY, 3.75 EOD, A-SEC
	14	330225	2 PULLBAR
	15	034272	2 NT .312-18 HX G5 ZNYC
	16	768523	10 FW .343X.687X.051/.080H
	17	058776	6 NT .312-18 HXZY NL
	18	034280	2 CS .312-18X .750 HX G5
	19	322974	2 PULLBAR PIN
4	20	781856	1 IDLER PULLEY, NHI 5.00"
	21	054502	8 NT .375-16 HX GRD 5 ZNY
	22	767954	16 FW .406X .812 X.060 SAE
	23	783506	2 BLADE SPINDLE ASSEMBLY
	24	005116	8 CS .375-16X1.375 HX G5
3	25	781302	1 IDLER SPRING
3	26	364315	1 CHAIN

NOTES:

1. Torque to 118 ft. lbs.
2. Torque to 30 ft. lbs.
3. These items are used on mowers with serial numbers prior to 10090001.
4. This item has quantity of 2 for mowers with serial numbers prior to 10090001.

36" Deck



36" Deck

INDEX NO.	PART NO.	QTY.	DESCRIPTION	
1	601786	1	BELT, A 89.50 EL	
2	601806	1	RUBBER DISCHARGE CHUTE	
3	601824	1	TORSION SPRING	
4	601843	1	CHUTE PIN	
5	112877	1	CHUTE BRACKET	
6	086660	3	NT .375-16 HXZY NL	
7	767954	2	FW .406X .812 X.060 SAE	
8	110729	1	RH 36" PULLEY COVER, TS	
9	110728	1	LH 36" PULLEY COVER, TS	
10	792002	4	5/16-18 X 3/4" MALE KNOB	
11	600901	1	BLADE, F20.50"-L-F-CW	
12	600900	1	BLADE, F13.75"-L-F-CW	
13	782474	2	CW .631 2.250X .187 PNT	
14	781872	2	CS .625-11X1.25 HX G5 Z	
3	15	056077	1	CS .250-20X1.000 HX G5
16	602192	1	SPACER, CHUTE STOP	
17	768515	1	FW .281X.625X.051/.080H	
18	068551	1	NT .250-20 HXZY NL	
19	086660	1	NT .375-16 HXZY NL	
20	767954	3	FW .406X.812X.060 SAE	
21	110751	1	CHUTE MOUNT	
22	058776	1	NT .312-18 HXZY NL	
23	798918	1	CHUTE, RUBBER DISCHARGE	
24	063297	1	SB .375X.500 SH .312-1	

NOTES:

1. Torque to 118 ft. lbs.
2. Do not torque, the discharge chute must pivot freely.
3. Items 15-24 used on mowers with serial numbers prior to 10070131.

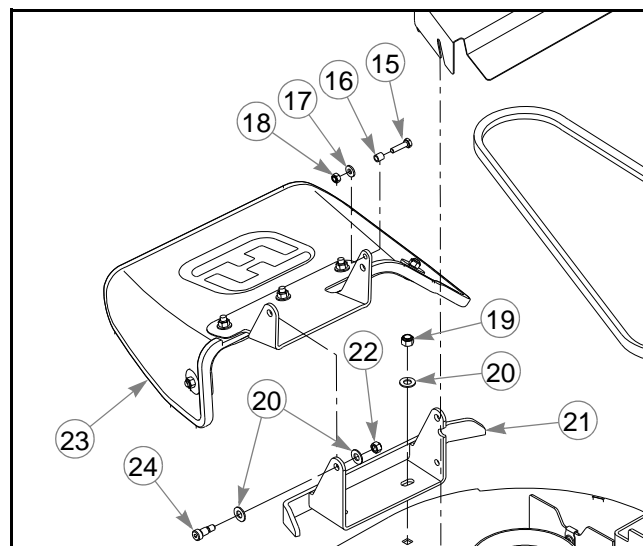
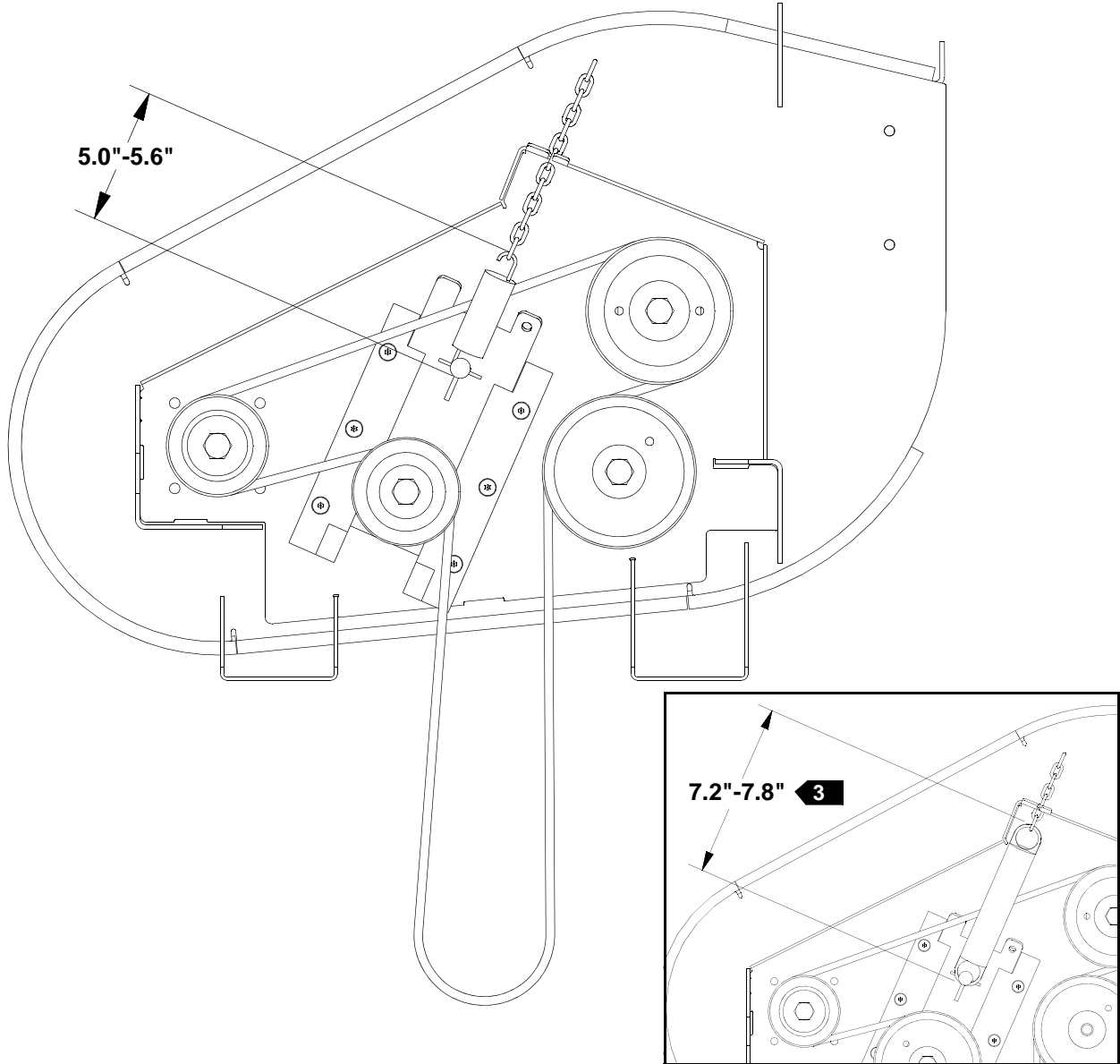


FIG. 1

Deck Belt Routing and Tensioning

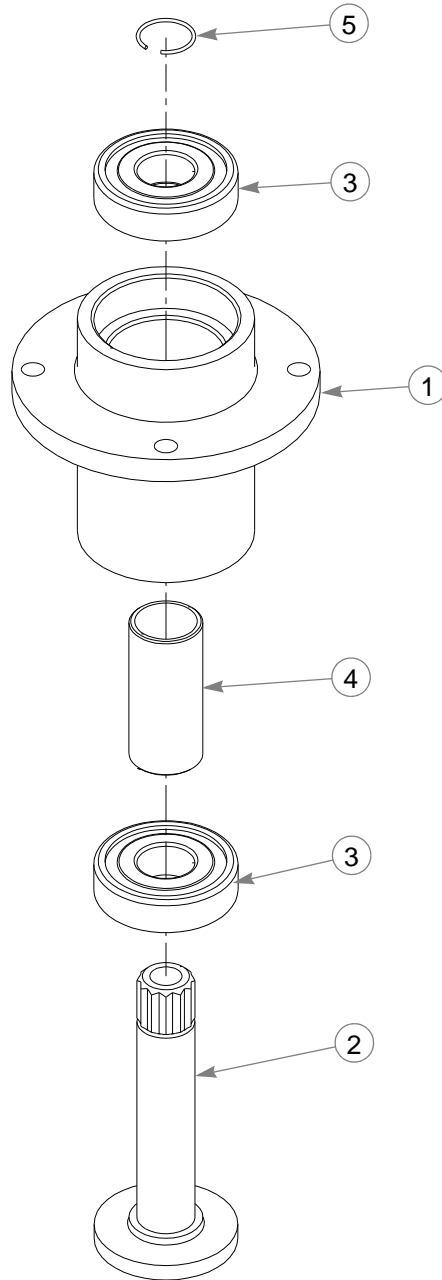


NOTES:

1. Route deck belt as shown.
2. Spring length after tensioning new belt. Spring length measured from outside of hook to outside of hook. Tension spring with deck in 3" level cutting height.
3. Dimension for mowers with serial numbers prior to S/N 10090001.

This page intentionally left blank.

Spindle Assembly—783506



INDEX NO.	SERVICE PART NO.	QTY.	DESCRIPTION
1	783514	1	HOUSING, BLADE SPINDLE
2	783522	1	SHAFT, BLADE SPINDLE
3	783555	2	BEARING, BLADE SPINDLE
4	783530	1	SPACER, BLADE SPINDLE
5	783548	1	RING, BLADE SPINDLE RETAINER

Numerical Index

Part No.	Page No.	Part No.	Page No.	Part No.	Page No.
Index					
Part Numbers					
000323	4-5	083279	2-3	550071	4-13
000331	2-7, 4-3	086660	3-3, 4-9, 4-17, 6-7	550072	4-13
005116	6-5	102125	1-2	550226	2-3
008193	3-3	105031	6-5	550229	6-2
008417	3-3	107654	1-2	600767	2-7
015495	3-3	109202	4-17	600900	1-1, 1-2, 6-7
015818	1-1, 4-5	109203	4-17	600901	1-1, 1-2, 6-7
016410	2-7	110511	4-5	600972	2-7
017004	4-3	110529	3-3	600974	2-7
017251	4-9	110530	3-3	600975	2-7
019521	5-4	110537	2-7	600976	2-7
024927	4-17	110538	4-17	601001	2-5
025007	6-5	110539	4-17	601069	2-3, 6-2
025296	2-5	110551	2-5	601084	2-5
028118	2-5	110570	3-3	601097	4-13
033001	1-1, 2-3	110639	4-9	601098	4-9, 4-15
034272	2-5, 3-3, 4-3, 4-9, 4-17, 6-5	110645	4-7	601162	6-5
034280	2-5, 4-3, 4-5, 6-5	110646	4-9	601219	2-7
034652	4-9	110647	4-9	601221	2-7
036236	3-3	110728	6-7	601325	4-3
036244	3-3	110729	6-7	601433	2-7
036384	2-5, 6-5	110730	2-7	601434	6-5
039693	4-7	110731	2-7	601503	2-7
041152	4-7	110736	4-3	601681	3-3
041988	2-7	110751	6-7	601682	2-7
042630	5-3	110762	2-5	601683	2-7
043299	4-7	110766	4-7	601710	4-17
045765	4-7	110775	3-3	601786	1-1, 6-7
046821	6-5	110932	4-9	601787	6-2
047456	4-7	111157	2-7	601796	6-2
052837	4-3	111251	1-1	601798	4-9
054502	3-3, 4-5, 4-9, 4-17, 6-5	111478	1-2	601799	4-3
055749	3-3	111538	3-3	601806	6-7
055822	4-13	111557	4-3	601824	6-7
055939	4-17	111616	2-7	601838	1-1, 2-5
056077	6-7	111617	2-7	601839	4-7
058776	4-7, 6-5, 6-7	112877	6-7	601843	6-7
059832	4-9, 4-15	259812	2-5, 6-5	601931	6-2
061077	5-3	263517	3-3	601934	4-13
063297	6-7	305086	4-9	601942	3-3
064006	4-17	306969	5-3	601952	4-9
064345	4-3	314351	4-9	601953	3-3, 4-9
068478	1-1	322974	6-5	601967	4-13
068551	2-7, 6-7	330225	6-5	601970	4-13
073338	4-9	339689	5-3	601972	4-13
076422	4-9	341826	4-7	601996	2-5
077842	4-7	342378	4-7	602094	2-7
078949	3-4	344267	5-3	602192	6-7
080655	4-17	348284	3-3	602208	2-7
		348458	3-3	602228	2-7
		360131	3-3	602243	6-2
		364315	6-5	704643	3-3

Part No.	Page No.	Part No.	Page No.	Part No.	Page No.
704932	4-9, 4-15	779280CE	2-3	785766	4-7
705954	3-3, 5-3	779306	4-5	785808	4-13
710087	2-7	781153	2-5	786848	2-5
712372	4-3	781294	3-3	787713	1-1, 2-5, 4-3
712976	5-3	781302	6-5	788349	4-9
727172	4-13	781567	3-4, 5-3	788554	4-9
728550	3-3	781831	3-3	788604	5-3, 5-5
756270	3-3	781856	6-5	788828	4-13
763417	4-3	781872	2-5, 6-5, 6-7	791251	4-3
765339	3-3, 4-17	781922	2-7, 4-9	791343	4-3
767954	2-7, 3-3, 4-5, 4-13, 4-17, 6-5, 6-7	781930	3-3	791558	4-3
767962	3-3, 4-9, 5-3	782474	6-5, 6-7	792002	6-7
768259	4-9	782664	4-3	792044	4-5
768515	2-7, 4-17, 6-7	783506	6-5	792317	3-3
768523	2-5, 3-3, 4-3, 4-5, 4-7, 4-17, 6-5	783514	6-10	792374	4-9
769166	4-13	783522	6-10	793513	6-2
769299	4-7	783530	6-10	796524	4-3
771030	4-13	783548	6-10	796656	6-5
771139	4-7	783555	6-10	796664	6-5
772079	1-1	783944	4-5	797449	6-5
772806	5-5	784199	6-5	797647	2-3
772814	5-5	784223	4-7, 5-3	797787	1-1
773556	4-7	784421	4-17	797845	6-2
776476	4-13	784603	5-3	797852	1-1
776518	4-13	784918	4-3	797860	1-1
778365	4-15	785048	4-3	798918	6-7
778746	2-5	785113	4-9	799429	4-3
779157	4-7	785295	4-5	808485	2-3
779165	4-7	785303	5-4	929232	1-1
		785337	5-4	929299	1-2
		785345	5-3		