



MANITOU NORTH AMERICA, INC.

6401 IMPERIAL DRIVE
Waco, TX 76712-6803

NOTE: *Manitou Forklift Manuals are continually updated and subject to change without prior notice. If your Forklift Mast Model or parts are not found in this manual, please contact your dealer or the Manitou North America Parts Department for the latest information and parts availability.*

**7300 SERIES
3 STAGE MAST
MODEL K7300**

PARTS MANUAL

For Parts Orders contact your Manitou North America Dealer or call:
Manitou North America, Parts Dept. 800-425-3727 or (254) 799-0232
Parts Dept. Fax: (254) 867-6504 Website: www.manitou-na.com

GENERAL INFORMATION

The purpose of this catalog is to provide illustrations for identifying and ordering Mast components/parts. Because of the multitude of Mast Models and components utilized, the illustrations provide a general description and therefore may not show the *exact* shape or detail of the components/parts represented.

The Mast parts are identified by an Item Number on the illustration or picture page. Find the Item Number for the part desired, then locate that Item Number under the "Items" column following the illustration. The Part Number will be located directly to the right of the Item Number. Also provided is a part Description, Quantity of parts required and the mast Model number.

Most important when ordering parts, is providing the correct serial number as assigned to the mast at the factory. Keep accurate records of all modifications or improvements made to the mast after manufacture. (All Mast modifications must be authorized by K-D Manitou.) Notify the Parts Dept. of any changes that may affect your parts order.

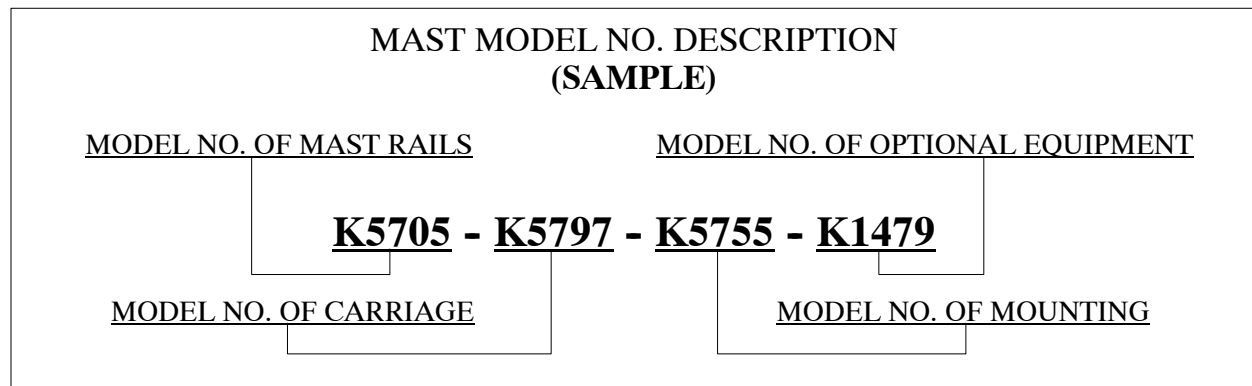
When ordering Mast parts or requesting technical information, the following numbers are required:

Mast Model Number: _____

Mast Serial Number: _____

For quick reference it is recommended these numbers be recorded as soon as possible.

The Mast Model Number is stamped on the Identification Plate located on the right side (as viewed from the driver's seat) of the Outer Rail, at or above eye level.

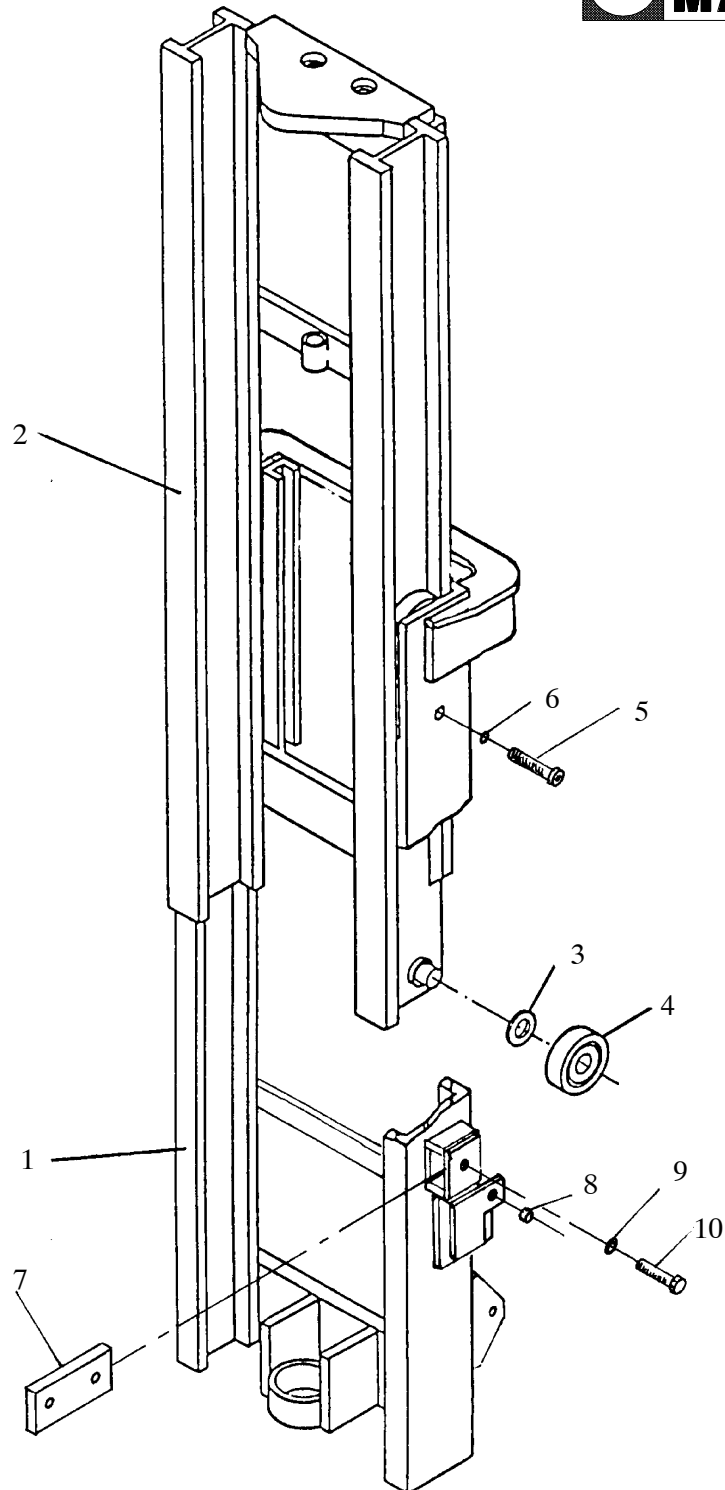


For Parts Orders contact your ***K-D Manitou Dealer*** or call:
K-D Manitou, Inc., Parts Department 1-800-425-3727 or (254) 799-0232.
Parts Dept. Fax: (254) 867-6504 Website: www.kdmanitou.com

CONTENTS

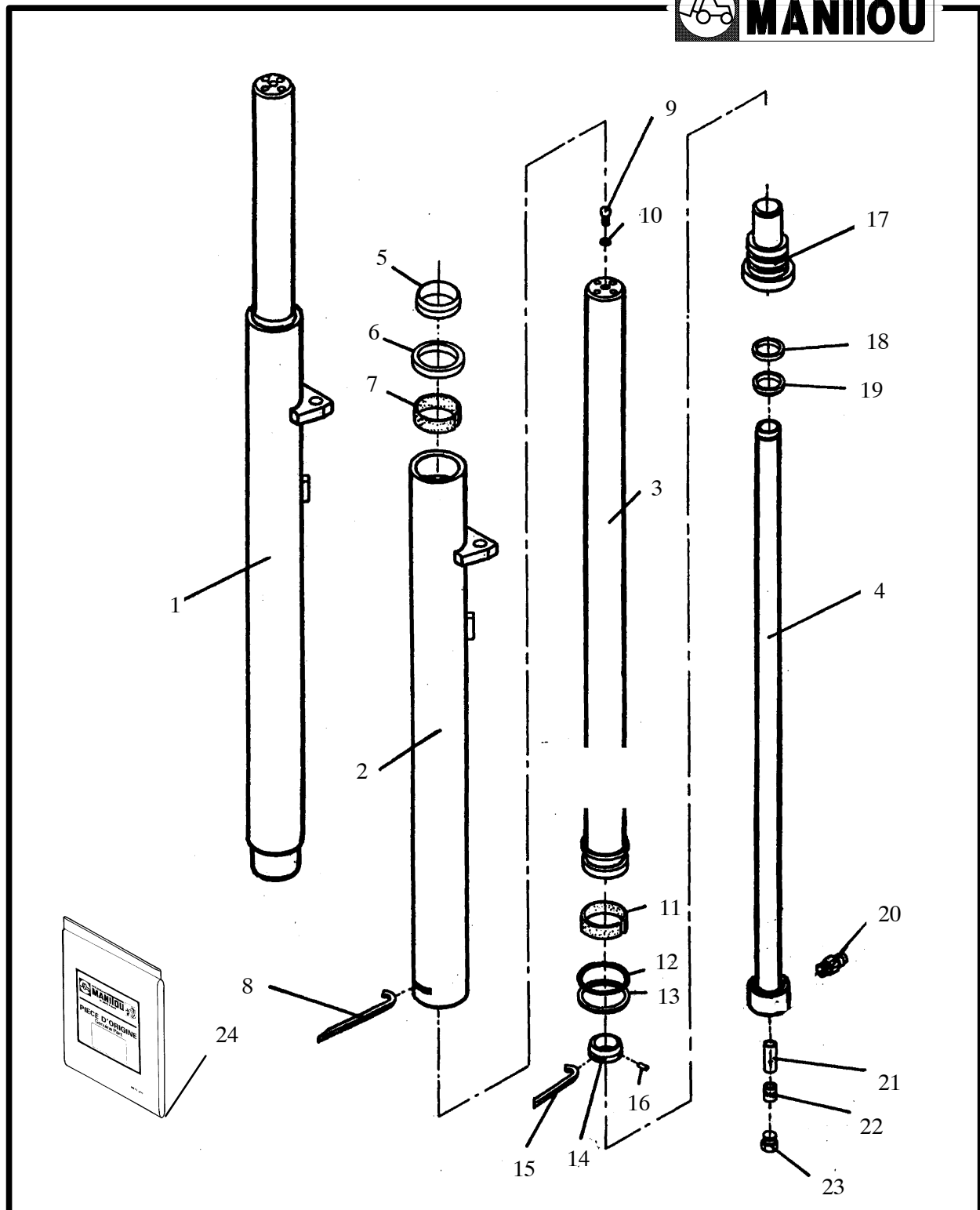
RAIL ASSEMBLIES	1
LIFT CYLINDER ASSEMBLY	3
CHAIN SYSTEM	5
HYDRAULIC SYSTEM	7
CARRIAGE ASSEMBLY	9
SIDE SHIFT CYLINDER	11
DECALS	APPENDIX
PARTS INDEX	APPENDIX

RAIL SYSTEM



ITEM	PART NUMBER	DESCRIPTION	QTY	MODEL
1	R21505	OUTER RAIL	1	
2	R21520	INNER RAIL	1	
3	R22	SHIM	A/R	
4	R2	ROLLER ASSEMBLY	4	
5	R9251	SCREW, SCOKET HEAD CAP	2	
6	K34813	WASHER, LOCK	2	
7	R20709	HOLD DOWN	1	
8	R4097	BUSHING	1	
9	K45796	BOLT, 3/4	1	
10	K34811	WASHER, LOCK 3/4	1	

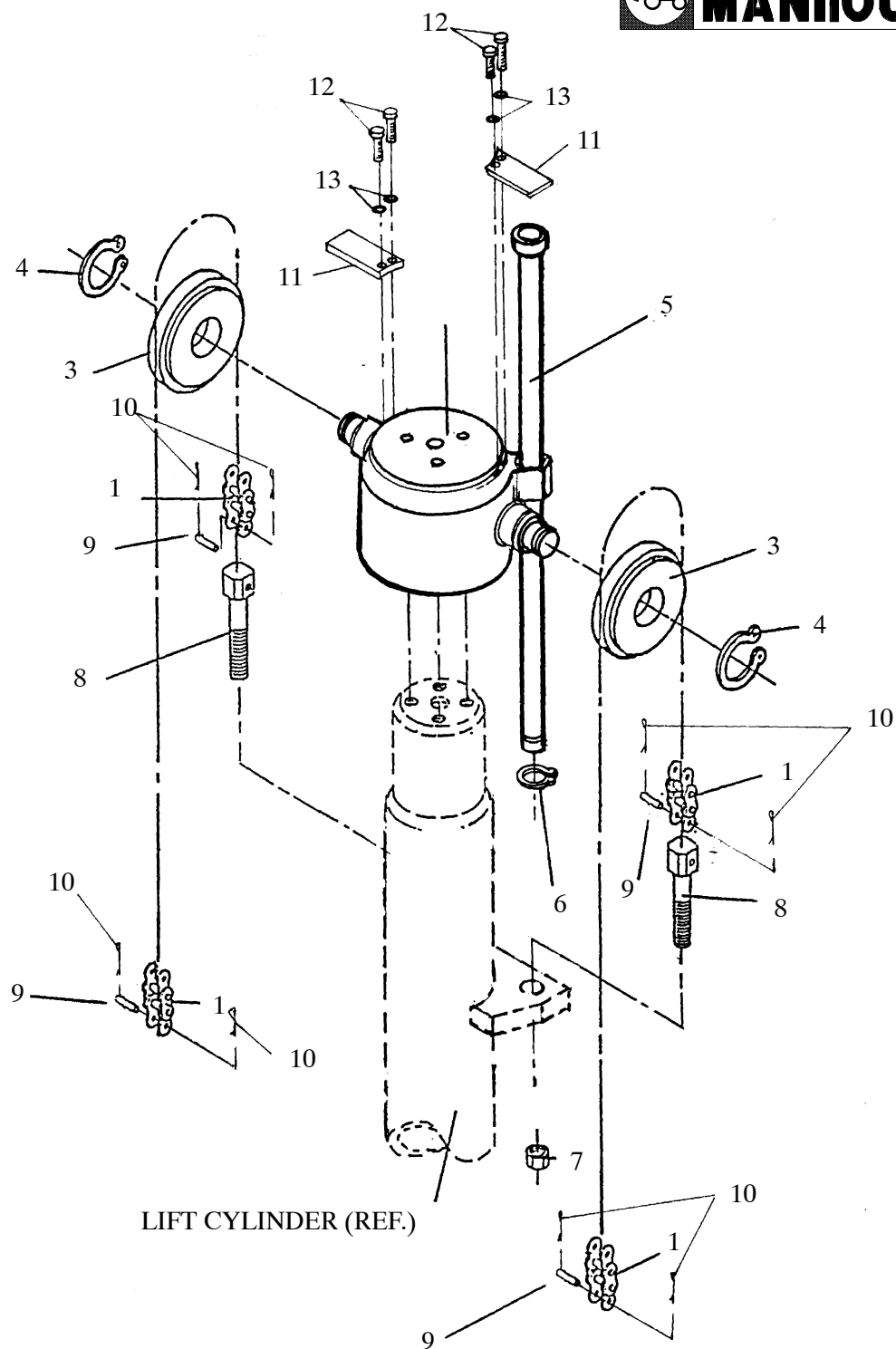
LIFT CYLINDER ASSEMBLY



ITEM	PART NUMBER	DESCRIPTION	QTY	MODEL
1	R21545	LIFT CYLINDER ASSEMBLY	1	
2	R21555	BARREL ASSEMBLY	1	
3	R21550	PISTON, PRIMARY	1	
4	R21540	PISTON, SECONDARY	1	
5	*	WIPER	1	
6	*	SEAL	1	
7	R21606	WEAR RING	1	
8	R2211-7	WIRE, LOCK	1	
9	R2551	SCREW, BLEED	1	
10	R2552	WASHER, SEAL	1	
11	*	RING, WEAR	1	
12	*	O-RING	1	
13	*	RING, BACK UP	1	
14	R21543	STOP	1	
15	R2211-1	WIRE, LOCK	1	
16	K305029	PIN, ROLL	1	
17	R21546	BASE	1	
18	*	SEAL	1	
19	*	WIPER	1	
20	K62-10-8	ADAPTER	1	
21	R21557	REGULATOR, FLOW	1	
22	R478	SPOOL	1	
23	K64-12	PLUG	1	
24	R21545K	KIT SEAL	1	

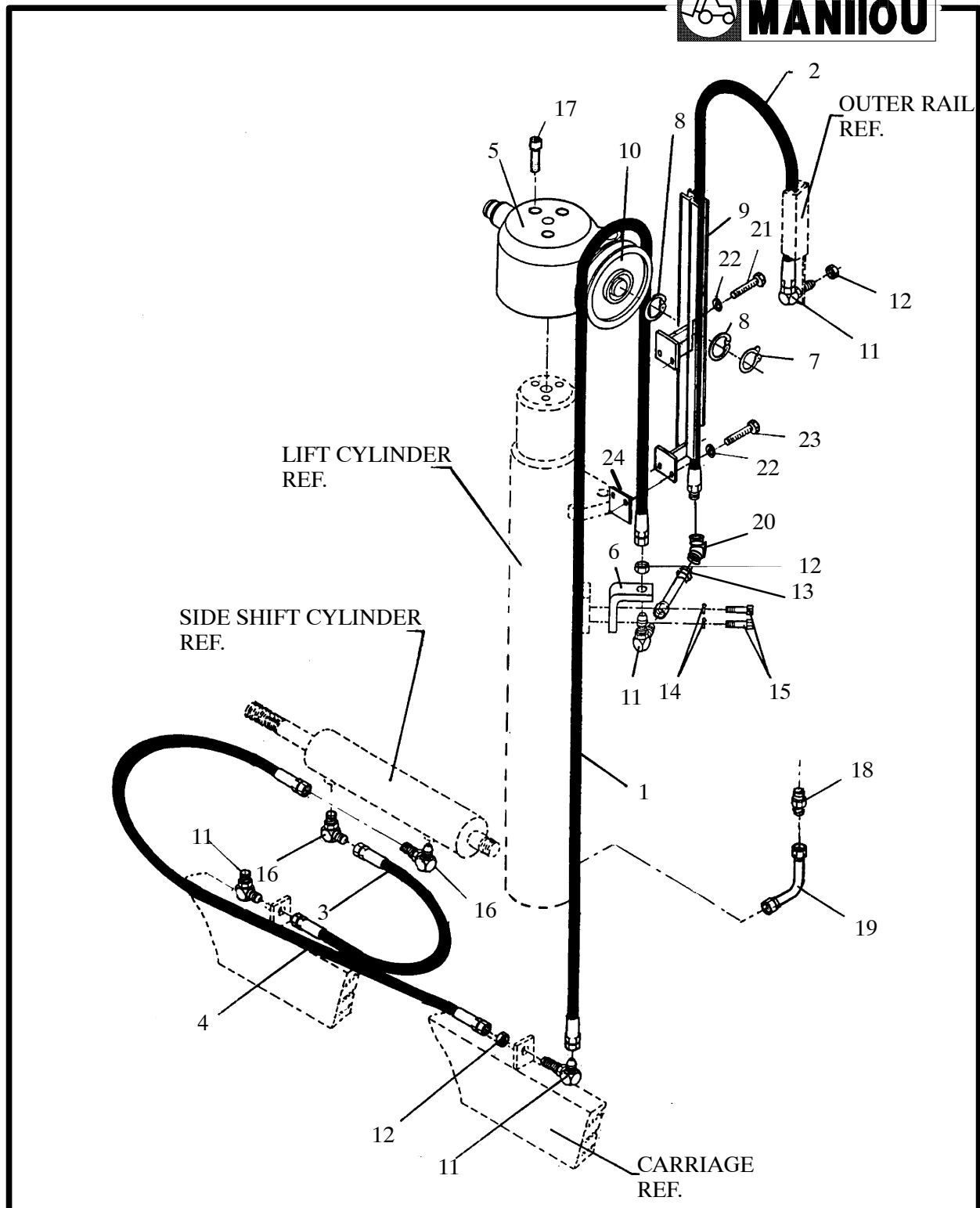
* INDICATES ITEMS INCLUDED IN SEAL KIT

CHAIN SYSTEM



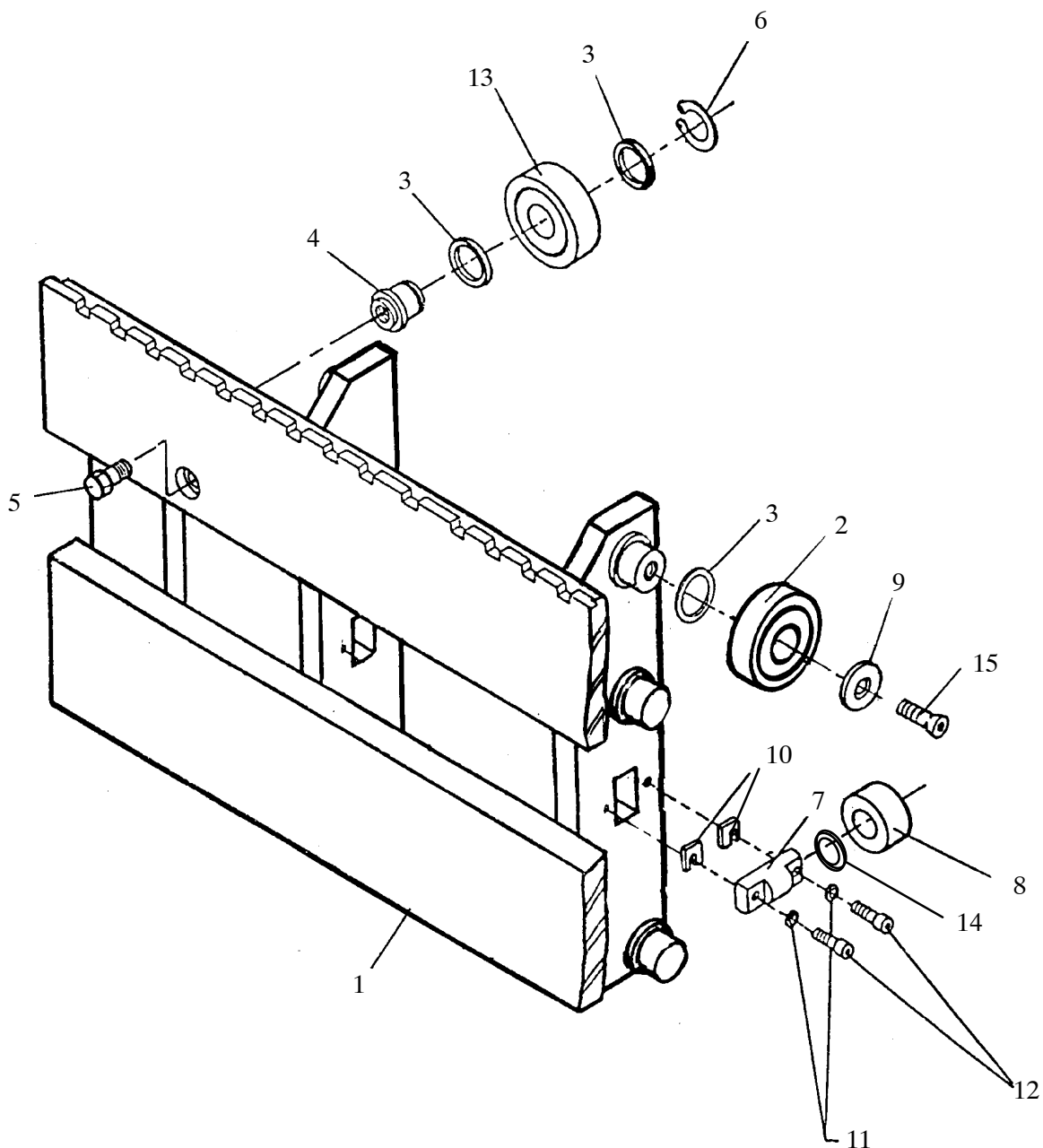
ITEM	PART NUMBER	DESCRIPTION	QTY	MODEL
1	R21513-1	CHAIN ASSEMBLY	2	
2	R21565	CROSS HEAD ASSEMBLY	1	
3	R9762	SHEAVE, CHAIN	2	
4	K97538	RING, SNAP	2	
5	R21525	ROD, GUIDE	2	
6	R6434	RING, SNAP	2	
7	R227	NUT, STOP	4	
8	R21514	ANCHOR, CHAIN	4	
9	R189-2	PIN, CHAIN	4	
10	K72016	PIN, COTTER	8	
11	R21618	RETAINER	2	
12	K302170	SCREW	4	
13	K34806	WASHER, LOCK	4	

HYDRAULIC SYSTEM



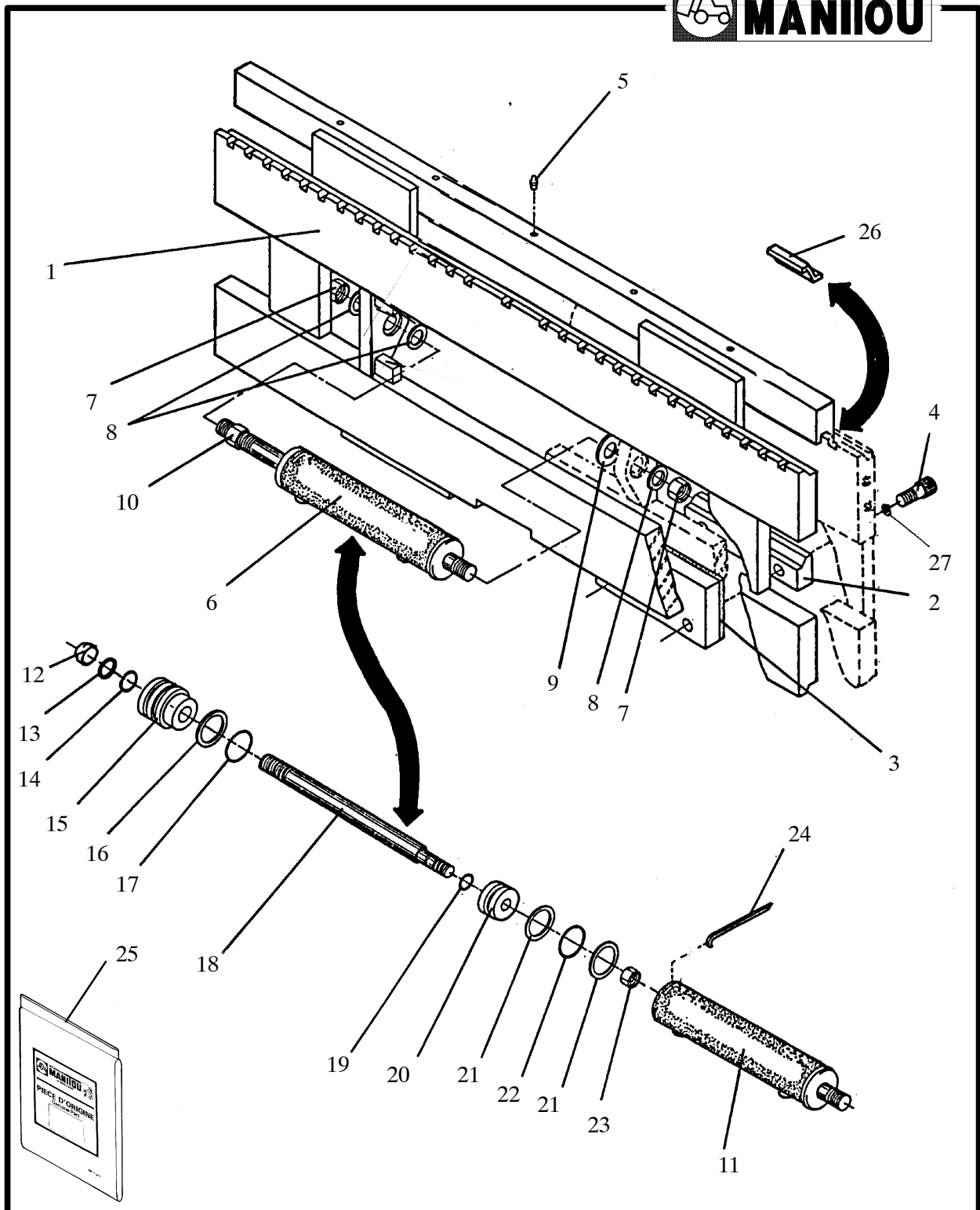
ITEM	PART NUMBER	DESCRIPTION	QTY	MODEL
1	B760-1650	HOSE ASSEMBLY	2	
2	B760-1653	HOSE ASSEMBLY	2	
3	B760-1651	HOSE ASSEMBLY	1	
4	B760-1652	HOSE ASSEMBLY	1	
5	R21565	CROSS HEAD ASSEMBLY	1	
6	R21523	BRACKET	2	
7	R6434	RING, SNAP	2	
8	K97538	RING, SNAP	2	
9	R21560	HOSE GUIDE ASSEMBLY	1	
10	R12095	SHEAVE HOSE	2	
11	K108-6	FITTING, 90 DEG. BULKHEAD	6	
12	K22-6	NUT	6	
13	R21620	TUBE ASSEMBLY	2	
14	K34806	WASHER, LOCK	4	
15	K20346	BOLT, HEX	4	
16	K66-6	FITTING 90 DEG.	2	
17	K302232	SCREW, SOC. HD. 1/2-13 X 3/4	3	
18	K4-10	ADAPTER	1	
19	R21530	TUBE ASSEMBLY	1	
20	K8-6	FITTING	2	
21	K20388	BOLT	2	
22	K34807	WASHER, LOCK	4	
23	K20506	BOLT	2	
24	R21533	STOP	1	

CARRIAGE ASSEMBLY



ITEM	PART NUMBER	DESCRIPTION	QTY	MODEL
1	R21600	WELDMENT, CARRIAGE	1	
2	R2	ROLLER ASSEMBLY	6	
3	R22	SHIM	6	
4	R3561	SHAFT, ECCENTRIC	2	
5	R3564	BOLT, LOCK	2	
6	K97535	RING, SNAP	2	
7	R17659	SHAFT, THRUST	2	
8	R19745	ROLLER ASSEMBLY, THRUST	2	
9	R13452	WASHER	2	
10	R2394	SHIM	A/R	
11	K34806	WASHER, LOCK 5/16	4	
12	K302211	SCREW, SOCKET HEAD	4	
13	R1	ROLLER	2	
14	R2393	WASHER	2	
15	R1811	SCREW	2	

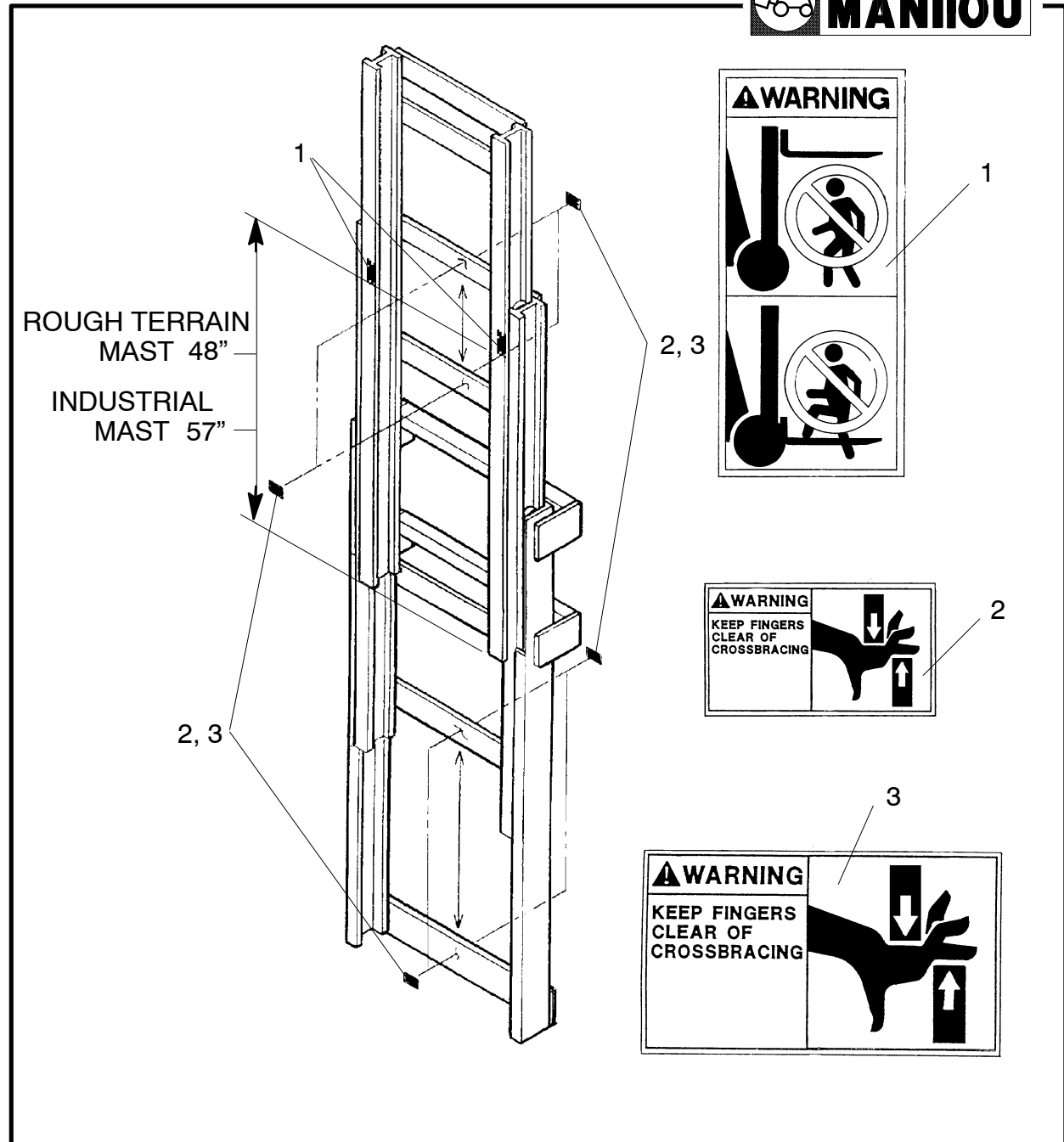
SIDE SHIFT WELDMENT



ITEM	PART NUMBER	DESCRIPTION	QTY	MODEL
1	R21610	WELDMENT, SIDE SHIFT	1	
2	R10364	CLIP, LOWER	4	
3	R21617	STRIP, WEAR	4	
4	K45768	SCREW, SOCKET HEAD	8	
5	K87901	FITTING, GREASE	3	
6	R15115	CYLINDER, SIDE SHIFT	1	
7	R10377	NUT, HEX	2	
8	R15102	WASHER	3	
9	R15103	WASHER	1	
10	K71B1393	NUT, JAM	1	
11	R15120	BARREL ASSEMBLY	1	
12	*	WIPER	1	
13	*	RING, BACK UP	1	
14	*	O-RING	1	
15	R8260-9	CYLINDER HEAD	1	
16	*	RING, BACK UP	1	
17	*	O-RING	1	
18	R15116	ROD, PISTON	1	
19	*	O-RING	1	
20	R8260-4	PISTON	1	
21	*	RING, BACK UP	2	
22	*	O-RING	1	
23	R8260-5	NUT, LOCK	1	
24	R8260-2	WIRE, LOCK	1	
25	R8260-10	SEAL KIT	1	
26	R8282	BAR, BRONZE SEGMENT	7	
27	K34811	WASHER, LOCK	8	

* INDICATES ITEMS INCLUDED IN SEAL KIT

DECALS



ITEM	PART NUMBER	DESCRIPTION	QTY	MODEL
1	426641	Decal, "Fork Safety"	2	ALL
2	426642	Decal, "Pinch Point" (Small)	A/R	
3	426643	Decal, "Pinch Point" (Large)	A/R	

B

B760–1650 HOSE ASSEMBLY, 8
B760–1651 HOSE ASSEMBLY, 8
B760–1652 HOSE ASSEMBLY, 8
B760–1653 HOSE ASSEMBLY, 8

K

K108–6 FITTING, 8
K20346 BOLT, HEX, 8
K20388 BOLT, 8
K20506 BOLT, 8
K22–6 NUT, 8
K302170 SCREW, 6
K302211 SCREW, SOCKET HEAD, 10
K302232 SCREW, SOCKET HEAD, 8
K305029 PIN, ROLL, 4
K34806 WASHER, LOCK, 6, 8, 10
K34807 WASHER, LOCK, 8
K34811 WASHER, LOCK, 2, 12
K34813 WASHER, LOCK, 2
K4–10 ADAPTER, 8
K45768 SCREW, SOCKET HEAD, 12
K45796 BOLT, 2
K62–10–8 ADAPTER, 4
K64–12 PLUG, 4
K66–6 FITTING, 8
K71B1393 NUT, JAM, 12
K72016 PIN, COTTER, 6
K8–6 FITTING, 8
K87901 FITTING GREASE, 12
K97535 RING, SNAP, 10
K97538 RING, SNAP, 6, 8

R

R1 ROLLER, 10
R10364 CLIP LOWER, 12
R10377 NUT, HEX, 12

R12095 SHEAVE, HOSE, 8
R13452 WASHER, 10
R15102 WASHER, 12
R15103 WASHER, 12
R15115 CYLINDER, SIDE SHIFT, 12
R15116 ROD, PISTON, 12
R15120 BARREL ASSEMBLY, 12
R17659 SHAFT, THRUST, 10
R1811 SCREW, 10
R189–2 PIN, CHAIN, 6
R19745 ROLLER ASSEMBLY, THRUST, 10
R2 ROLLER ASSEMBLY, 2, 10
R20709 HOLD DOWN, 2
R21505 OUTER RAIL, 2
R21513–1 CHAIN ASSEMBLY, 6
R21514 ANCHOR, CHAIN, 6
R21520 INNER RAIL, 2
R21523 BRACKET, 8
R21525 ROD, GUIDE, 6
R21530 TUBE ASSEMBLY, 8
R21533 STOP, 8
R21540 PISTON, SECONDARY, 4
R21543 STOP, 4
R21545 LIFT CYLINDER ASSEMBLY, 4
R21545K KIT, SEAL, 4
R21546 BASE, 4
R21555 BARREL ASSEMBLY, 4
R215550 PISTON, PRIMARY, 4
R21557 REGULATOR, FLOW, 4
R21560 HOSE GUIDE ASSEMBLY, 8
R21565 CROSS HEAD ASSEMBLY, 6, 8
R21600 WELDMENT, CARRIAGE, 10
R21606 WEAR, RING, 4
R21610 WELDMENT, SIDE SHIFT, 12
R21617 STRIP WEAR, 12
R21618 RETAINER, 6
R21620 TUBE ASSEMBLY, 8
R22 SHIM, 2, 10
R2211–1 WIRE, LOCK, 4
R2211–7 WIRE, LOCK, 4

R227 NUT, STOP, 6
R2393 WASHER, 10
R2394 SHIM, 10
R2551 SCREW, BLEED, 4
R2552 WASHER, SEAL, 4
R3561 SHAFT, ECCENTRIC, 10
R3564 BOLT. LOCK, 10
R4097 BUSHING, 2
R478 SPOOL, 4

R6434 RING, SNAP, 6, 8
R8260–10 SEAL KIT, 12
R8260–19 CYLINDER HEAD, 12
R8260–2 WIRE, LOCK, 12
R8260–4 PISTON, 12
R8260–5 NUT, LOCK, 12
R8282 BAR, BRONZE SEGMENT, 12
R9251 SCREW, SOCKET HEAD CAP, 2
R9762 SHEAVE, CHAIN, 6