



MANITOU NORTH AMERICA, INC.

6401 IMPERIAL DRIVE
Waco, TX 76712-6803

***NOTE:** Manitou Forklift Manuals are continually updated and subject to change without prior notice. If your Forklift Mast Model or parts are not found in this manual, please contact your dealer or the Manitou North America Parts Department for the latest information and parts availability.*

**7500 SERIES
3 STAGE MAST
10,000 L.B. CAPACITY**

MODEL K7502 & K7504
SERIAL NO. 750001 & ABOVE

PARTS MANUAL

For Parts Orders contact your Manitou North America Dealer or call:
Manitou North America, Parts Dept. 800-425-3727 or (254) 799-0232
Parts Dept. Fax: (254) 867-6504 Website: www.manitou-na.com

GENERAL INFORMATION

The purpose of this catalog is to provide illustrations for identifying and ordering Mast components/parts. Because of the multitude of Mast Models and components utilized, the illustrations provide a general description and therefore may not show the *exact* shape or detail of the components/parts represented.

The Mast parts are identified by an Item Number on the illustration or picture page. Find the Item Number for the part desired, then locate that Item Number under the "Items" column following the illustration. The Part Number will be located directly to the right of the Item Number. Also provided is a part Description, Quantity of parts required and the mast Model number.

Most important when ordering parts, is providing the correct serial number as assigned to the mast at the factory. Keep accurate records of all modifications or improvements made to the mast after manufacture. (All Mast modifications must be authorized by K-D Manitou.) Notify the Parts Dept. of any changes that may affect your parts order.

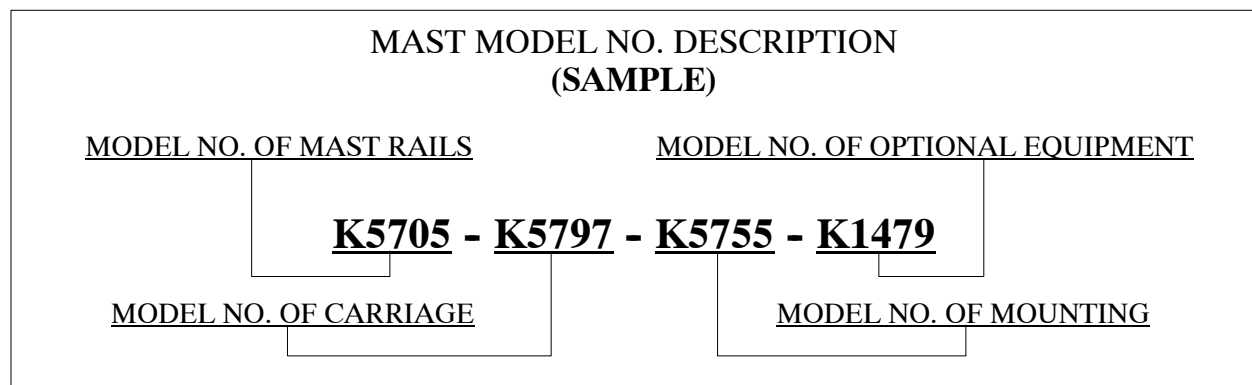
When ordering Mast parts or requesting technical information, the following numbers are required:

Mast Model Number: _____

Mast Serial Number: _____

For quick reference it is recommended these numbers be recorded as soon as possible.

The Mast Model Number is stamped on the Identification Plate located on the right side (as viewed from the driver's seat) of the Outer Rail, at or above eye level.



For Parts Orders contact your ***K-D Manitou Dealer*** or call:
K-D Manitou, Inc., Parts Department 1-800-425-3727 or (254) 799-0232.
Parts Dept. Fax: (254) 867-6504 Website: www.kdmanitou.com

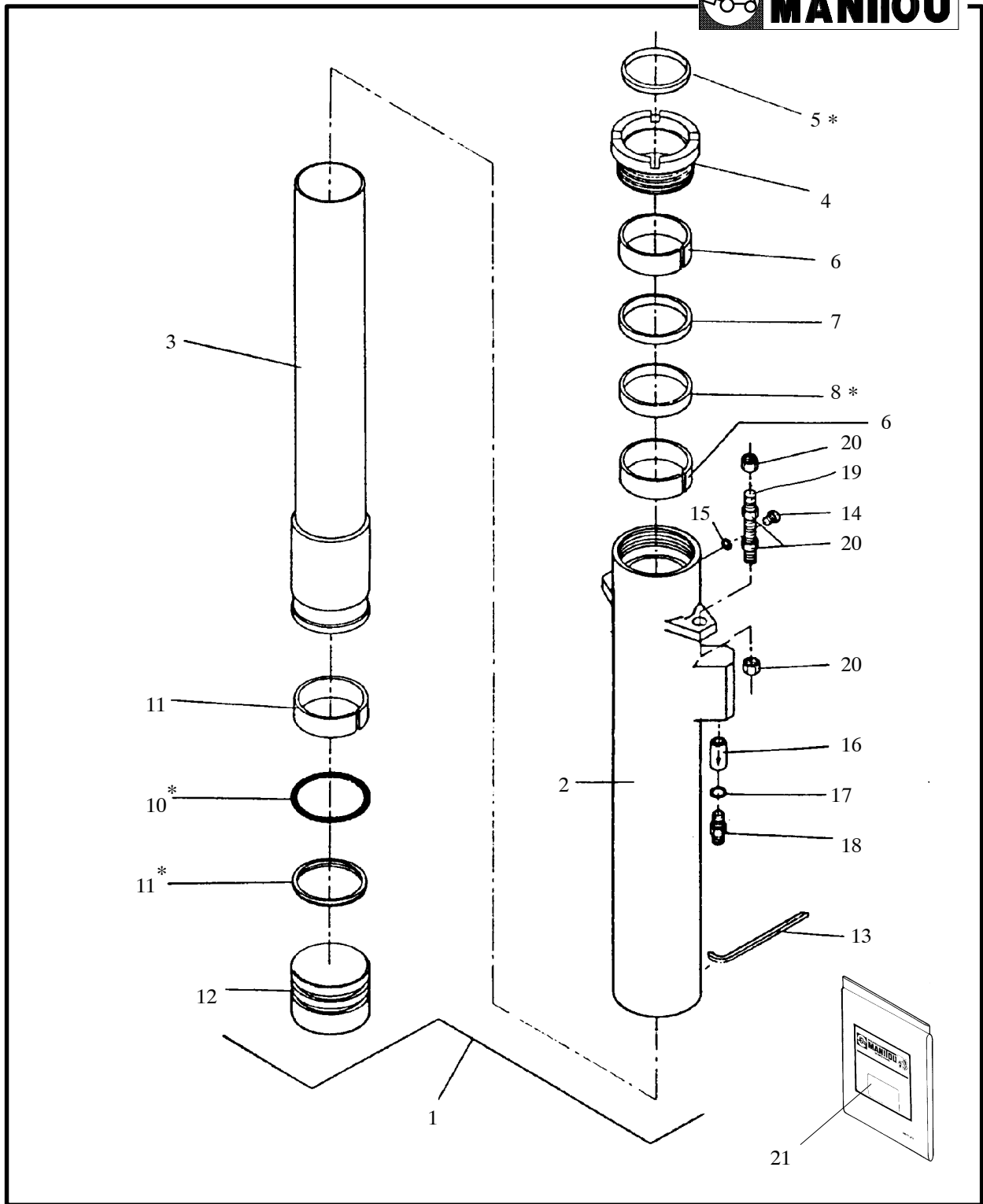
CONTENTS

DESCRIPTION	PAGE
RAIL SYSTEM	2
PRIMARY CYLINDER	4
SECONDARY CYLINDER	6
CHAIN SYSTEM	8
HYDRAULIC SYSTEM	10
HOSE KIT ASSEMBLY	12
CARRIAGE, MODEL K7590	14
CARRIAGE, MODEL K7595	15
DECALS	SUPPLEMENT
PARTS INDEX	

ITEM	PART NUMBER	DESCRIPTION	QTY	MODEL
1	R21705-2	Outer Rail Assembly	1	K7502
1	R21705-4	Outer Rail Assembly	1	K7504
2	R21715-2	Center Rail Assembly	1	K7502
2	R21715-4	Center Rail Assembly	1	K7504
3	R21720-2	Inner Rail Assembly	1	K7502
3	R21720-4	Inner Rail Assembly	1	K7504
4	R22	Shim	A/R	ALL
5*	R2	Roller	8	
6	R21763	Bolt, Socket Hd	2	

* Also available for replacement of R2 Roller is a 0.015" Over-Sized Roller, Order Part No. R446.

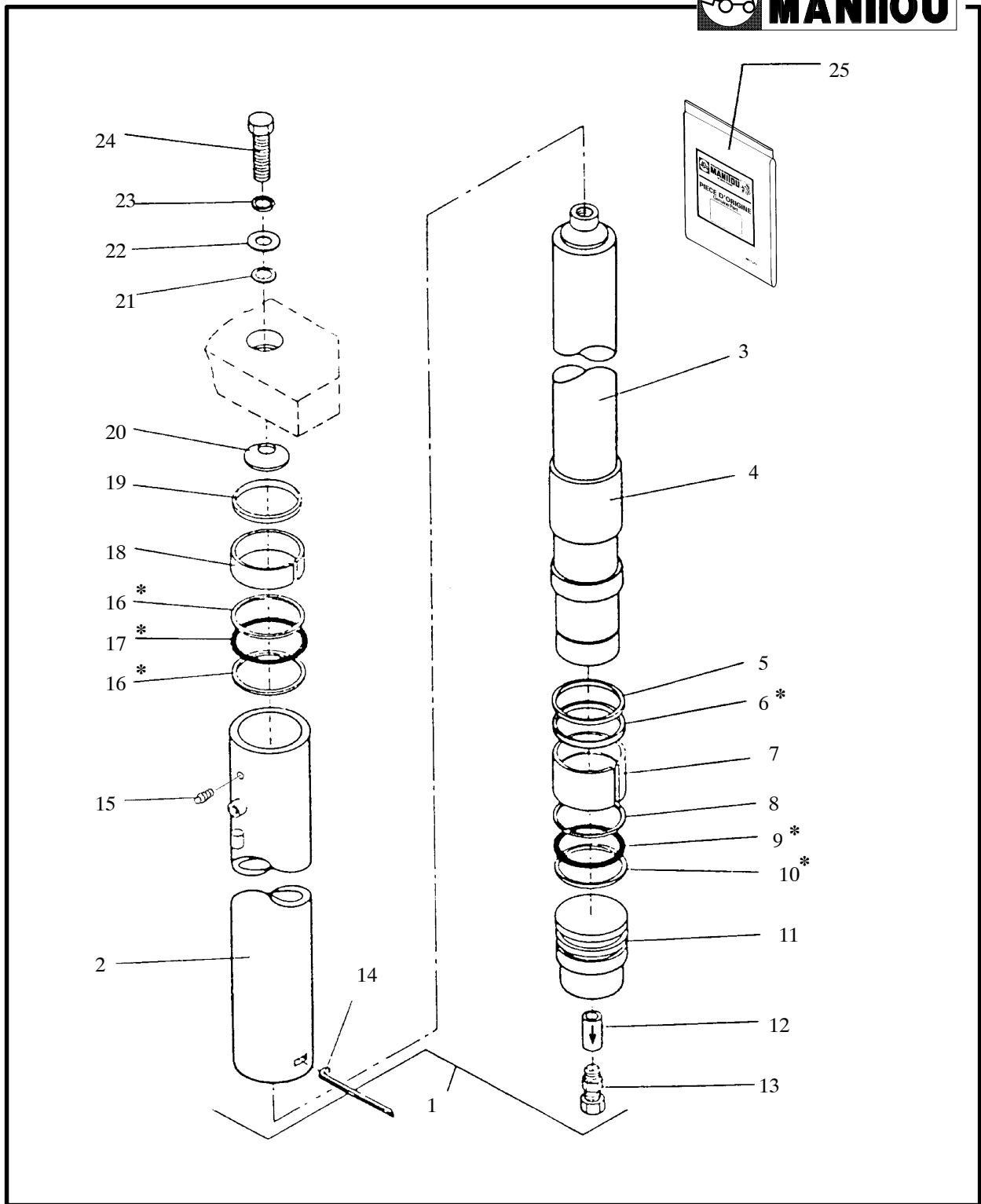
PRIMARY CYLINDER



ITEM	PART NUMBER	DESCRIPTION	QTY	MODEL
1	R14635-36	Primary Cylinder Ass'y	1	K7502
1	R14635-38	Primary Cylinder Ass'y	1	K7504
2	R14625-36	Barrel Ass'y	1	K7502
2	R14625-38	Barrel Ass'y	1	K7504
3	R7215-36	Piston Ass'y	1	K7502
3	R7215-39	Piston Ass'y	1	K7504
4	R7406	Nut, Gland	1	ALL
5*	-----	Wiper	1	
6	R7404	Ring, Wear	2	
7	R7402	Ring, Modular	1	
8*	-----	Seal	1	
9	R7443	Ring, Wear	1	
10*	-----	O-Ring	1	
11*	-----	Ring, Back Up	1	
12	R7506	Base	1	
13	R2211-7	Wire, Lock	1	
14	R2551	Screw, Bleed	1	
15	R2552	Washer, Seal	1	
16	R7409	Protector, Excess Flow	1	
17	K914	O-Ring	2	
18	K62-12-14	Adapter	1	
19	R12257	Stud	2	
20	K33849	Nut	8	
21	R7505K	Seal Kit	1	

* Items included in Seal Kit Part No. R7505K (Item 21).

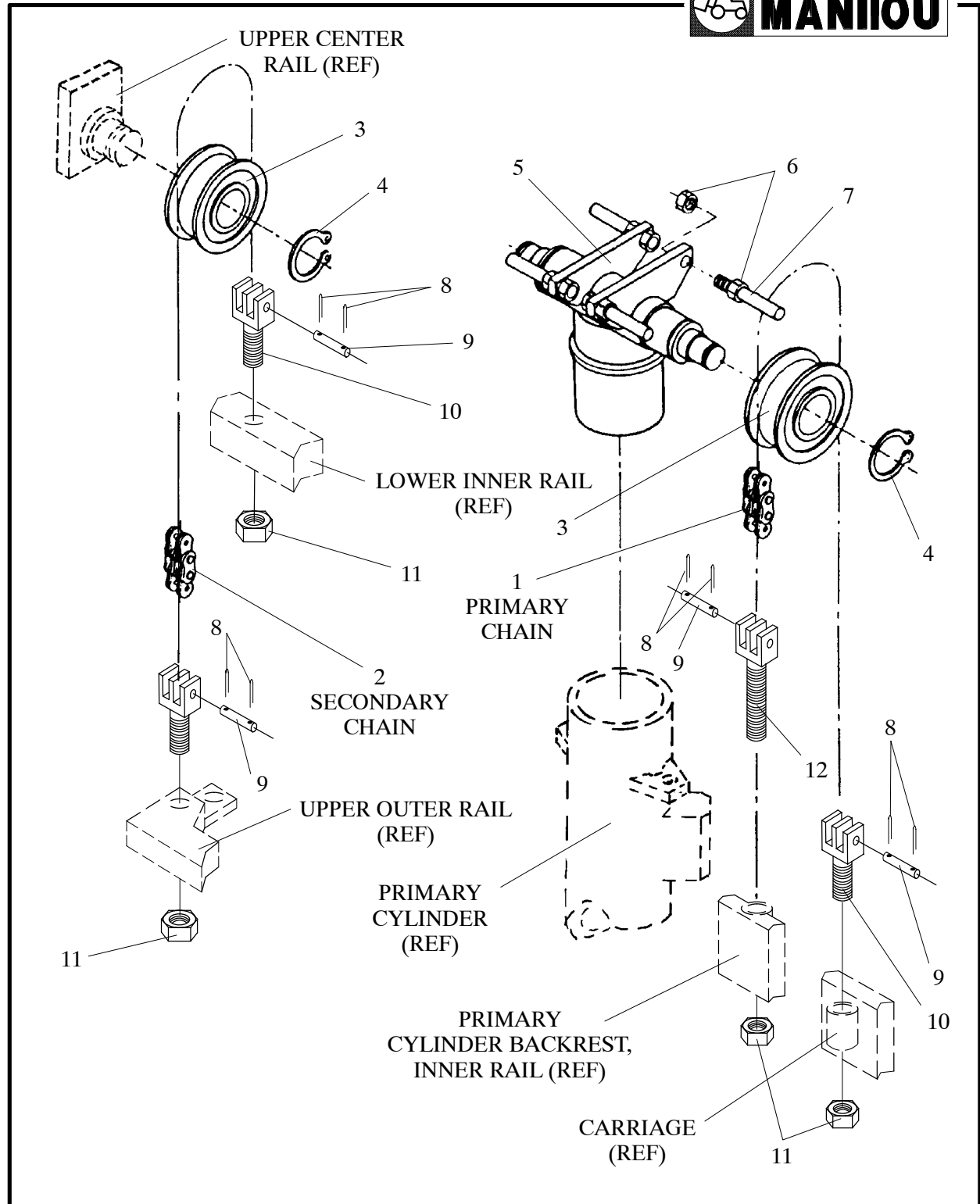
SECONDARY CYLINDER



ITEM	PART NUMBER	DESCRIPTION	QTY	MODEL
1	R7520-39	Secondary Cylinder Assy	1	K7502
1	R7520-41	Secondary Cylinder Assy	1	K7504
2	R7525-37	Barrel Assy	1	K7502
2	R7525-39	Barrel Assy	1	K7504
3	R7530-48	Piston Assy	1	K7502
3	R7530-50	Piston Assy	1	K7504
4	R7521-20	Spacer	1	ALL
5	R7524	Ring, Modular	1	
6*	----	Seal	1	
7	R7519	Bearing	1	
8	R7514	Ring, Snap	1	
9*	----	O-Ring	1	
10*	----	Ring, Back Up	1	
11	R7522	Base	1	
12	R5138	Protector, Excess Flow	1	
13	R7502	Connector	1	
14	R2211-6	Wire, Lock	1	
15	K87914	Fitting, Grease	1	
16*	----	Ring, Back Up	2	
17*	----	O-Ring	1	
18	R7528	Ring, Wear	1	
19*	----	Wiper	1	
20	R10328	Shim	1	
21	B531	Shim	1	
22	K44736	Washer	1	
23	K34809	Washer	1	
24	K20392	Bolt	1	
25	R7520K	Seal Kit (STD)	1	

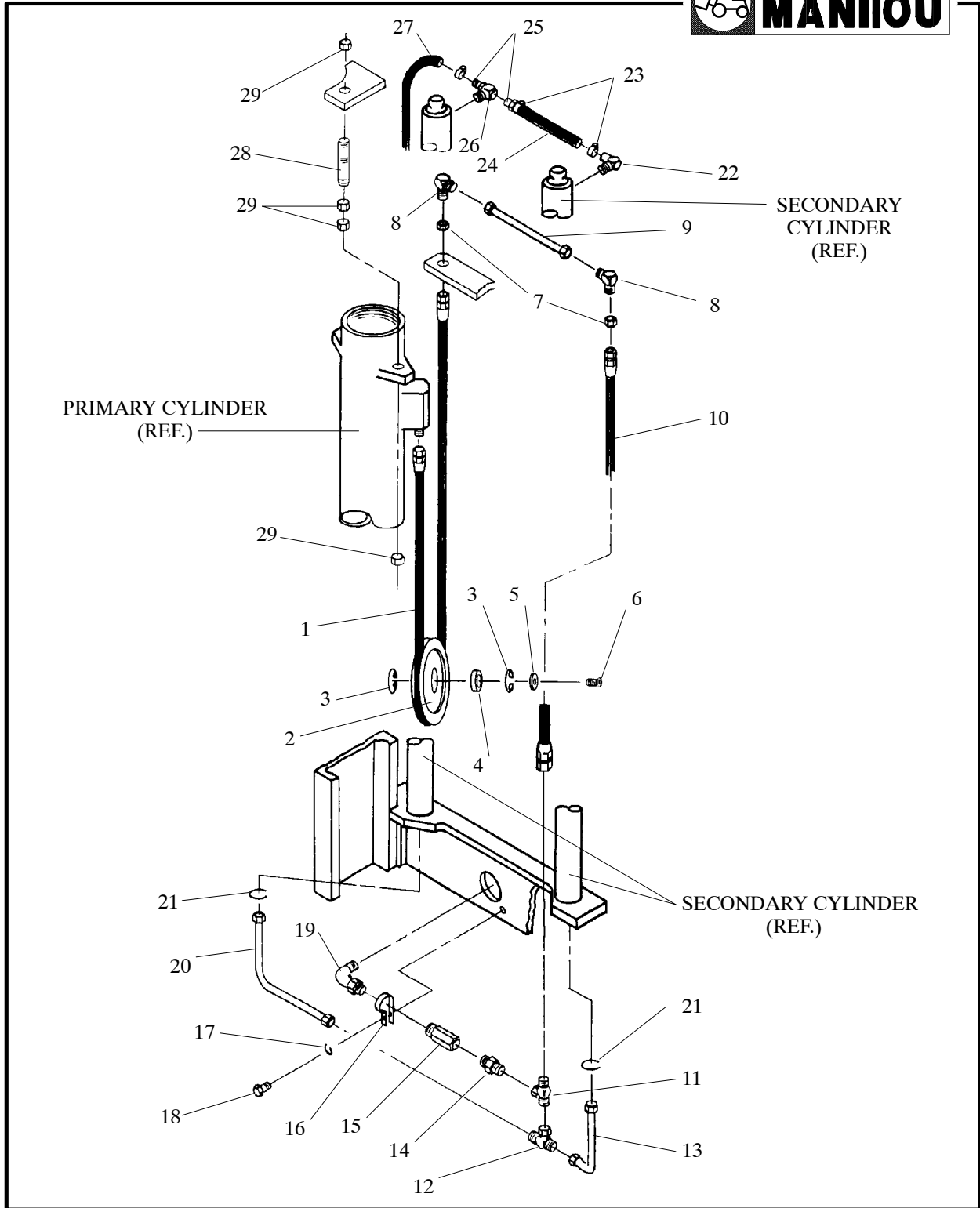
* Items included in Seal Kit Part No. R7520K (Item 25).

CHAIN SYSTEM



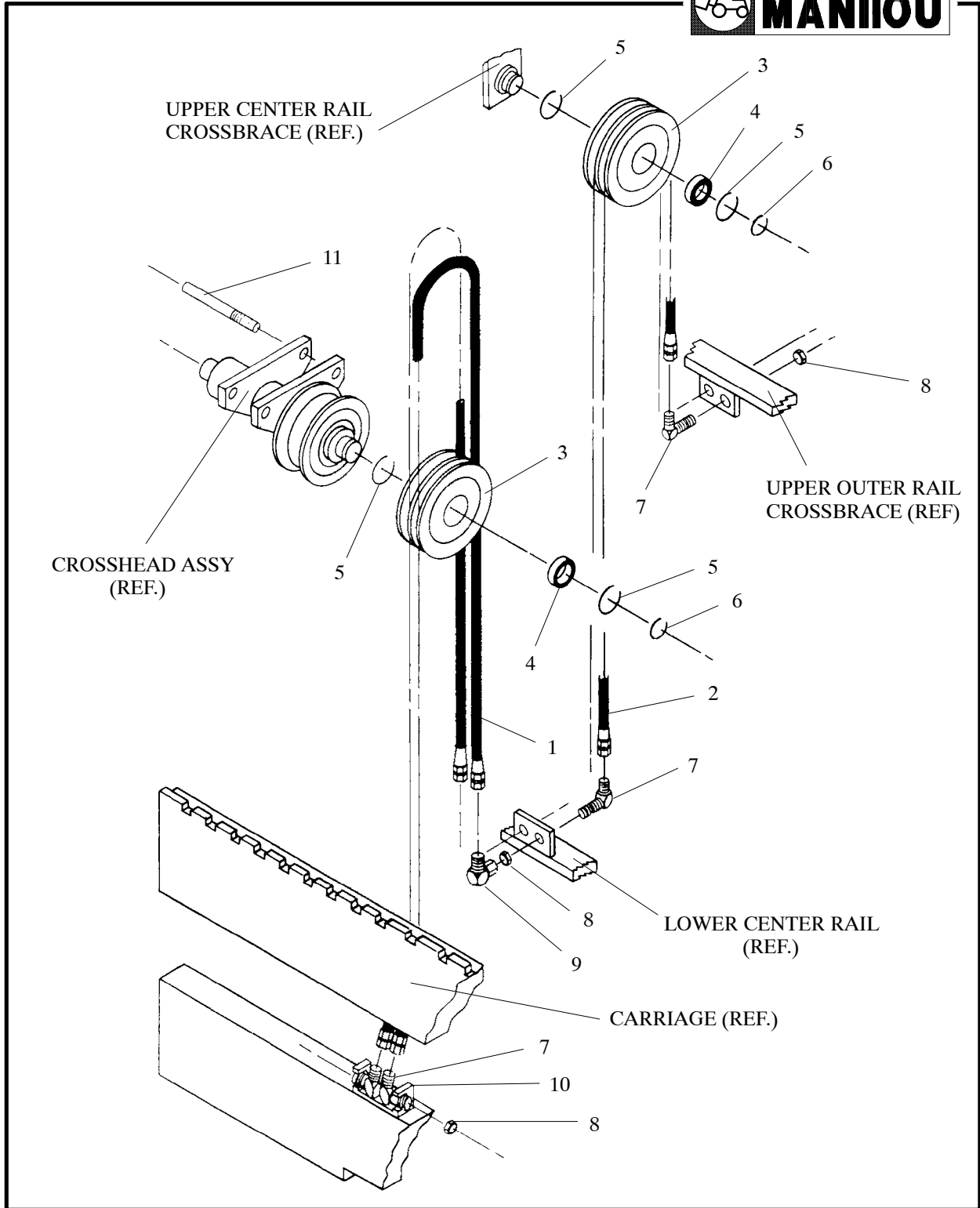
ITEM	PART NUMBER	DESCRIPTION	QTY	MODEL
1	R9481-8	Chain, Primary	2	K7502
1	R9481-15	Chain, Primary	2	K7504
2	R9481-26	Chain, Secondary	2	K7502
2	R9481-40	Chain, Secondary	2	K7504
3	R186	Sheave, Chain	2	ALL
4	K97541	Ring, Snap	2	
5	R10720	Cross Head Assembly	1	
6	K33797	Nut, Hex	4	
7	R10722	Pin, Guard	4	
8	K72016	Pin, Cotter	8	
9	R189-3	Pin, Chain	4	
10	R9482	Anchor, Chain	4	
11	R32	Nut, Hex	4	
12	R9483	Anchor, Chain	2	

HYDRAULIC SYSTEM



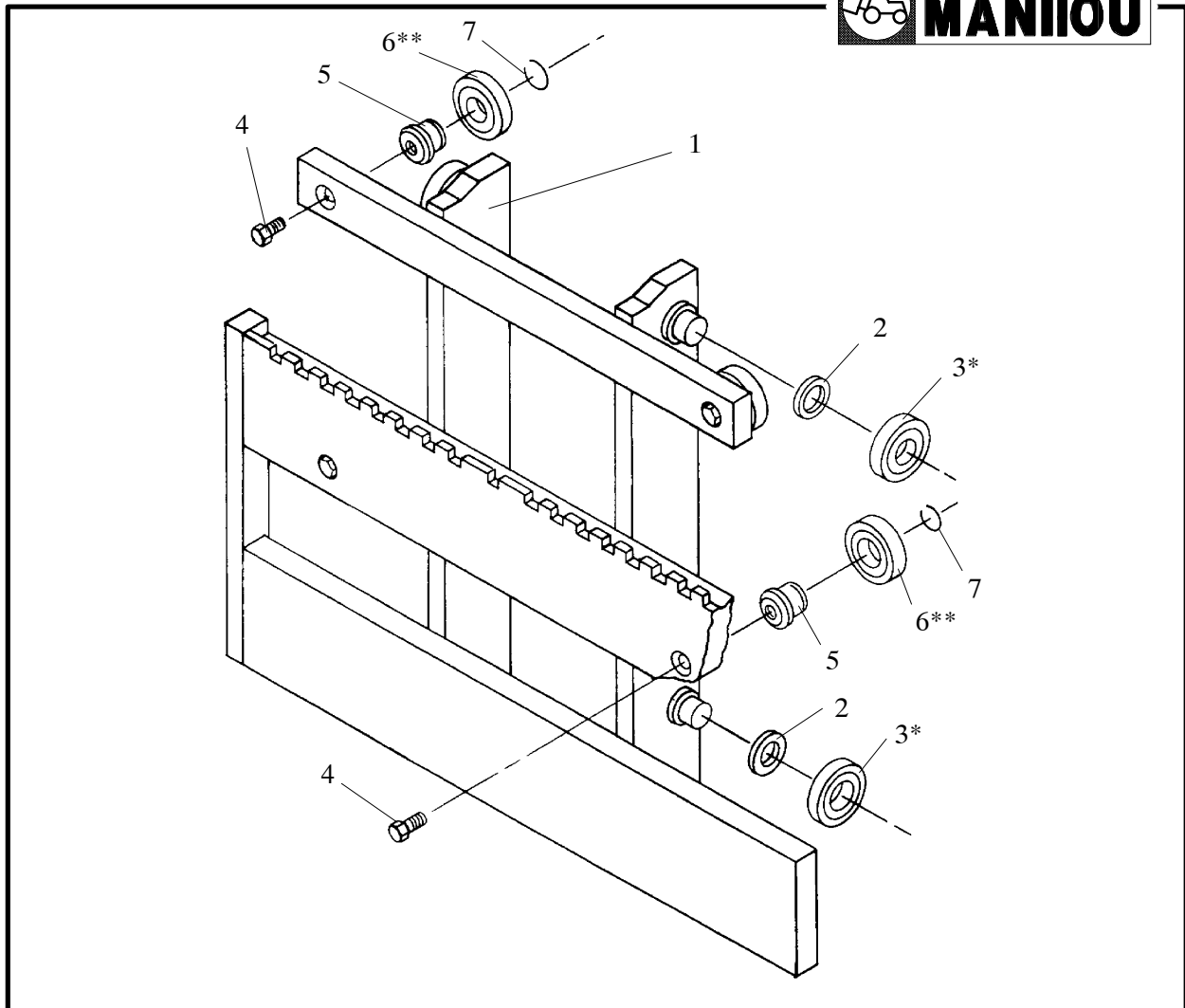
ITEM	PART NUMBER	DESCRIPTION	QTY	MODEL
1	B760-448	Hose Assembly	1	K7502
1	B760-907	Hose Assembly	1	K7504
2	R6502	Sheave, Hose	1	ALL
3	R7332	Ring, Snap	2	
4	R2362	Bearing	1	
5	R19418	Washer	1	
6	R1811	Screw, Flathead	1	
7	K52-12	Nut, Lock	2	
8	K108-12	Elbow, Bulkhead	2	
9	R21750	Tube Assy	1	
10	B760-587	Hose Assy	1	
11	K72-12	Tee	1	
12	K72-10-10-12	Tee	1	
13	R21722	Tube Assy	1	
14	K62-12	Fitting	1	
15	R17236	Regulator, Flow	1	
16	B3698-21	Clamp	1	
17	K34806	Washer, Lock	1	
18	K20346	Bolt, Hex	1	
19	K66-12	Elbow	1	
20	R21721	Tube Assy	1	
21	K97545	Snap Ring	2	
22	R12256	Nipple, Hose	1	
23	B2236-1	Clamp	3	
24	B760-942	Hose	1	
25	R8540-6	Adapter	2	
26	R9698-2	Tee	1	
27	B760-334	Hose	1	
28	R12257	Stud	2	
29	K33849	Nut, Hex	8	

HOSE KIT ASSEMBLY



ITEM	PART NUMBER	DESCRIPTION	QTY	MODEL
1	B760-1664	Hose Assembly	2	K7502
1	B760-1862	Hose Assembly	2	K7503
1	B760-1694	Hose Assembly	2	K7504
2	B760-1663	Hose Assembly	2	K7502
2	B760-1863	Hose Assembly	2	K7503
2	B760-1695	Hose Assembly	2	K7504
3	R10756	Sheave, Hose	2	ALL
4	R2362	Bearing	2	
5	R7332	Ring, Snap	4	
6	R10757	Ring, Snap	2	
7	K108-8	Fitting, Bulkhead	6	
8	K52-8	Nut, Hex	6	
9	K71-8	Fitting	2	
10	R19002	Brk't, Bulkhead	1	
11	R17256-1	Chain Guard	2	

CARRIAGE, MODEL K7590

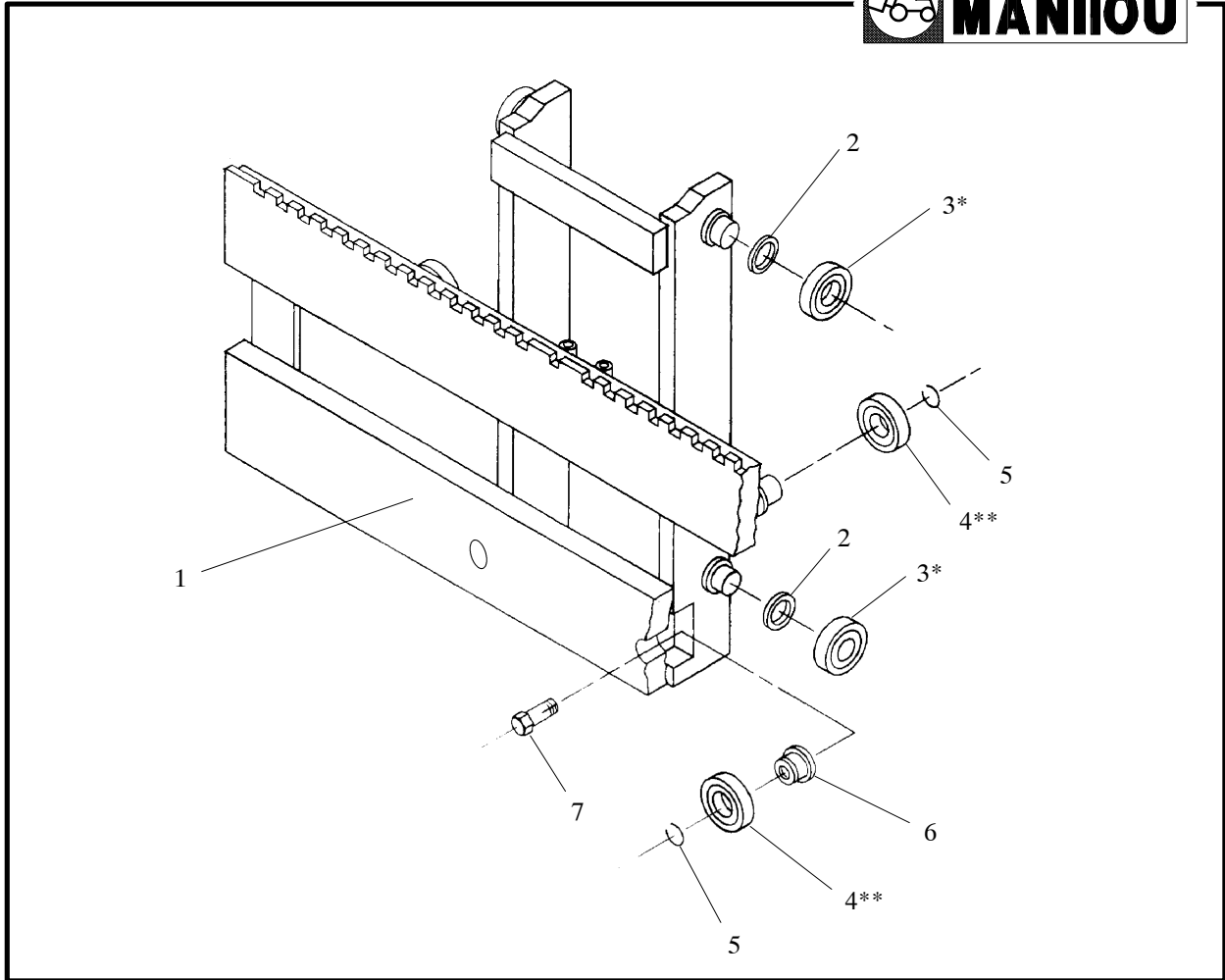


ITEM	PART NUMBER	DESCRIPTION	QTY	MODEL
1	R22340	Carriage Weldment	1	K7590
2	R22	Shim	A/R	ALL
3*	R2	Roller	4	
4	R3564	Bolt. Lock	4	
5	R3561	Shaft, Eccentric	4	
6**	R1	Roller	4	
7	K97535	Ring, Snap	4	

* Also available for replacement of R2 Roller is a 0.015" Over-Sized Roller, Order Part No. R446.

** Also available for replacement of R1 Roller is a 0.015" Over-Sized Roller, Order Part No. R442.

CARRIAGE, MODEL K7595

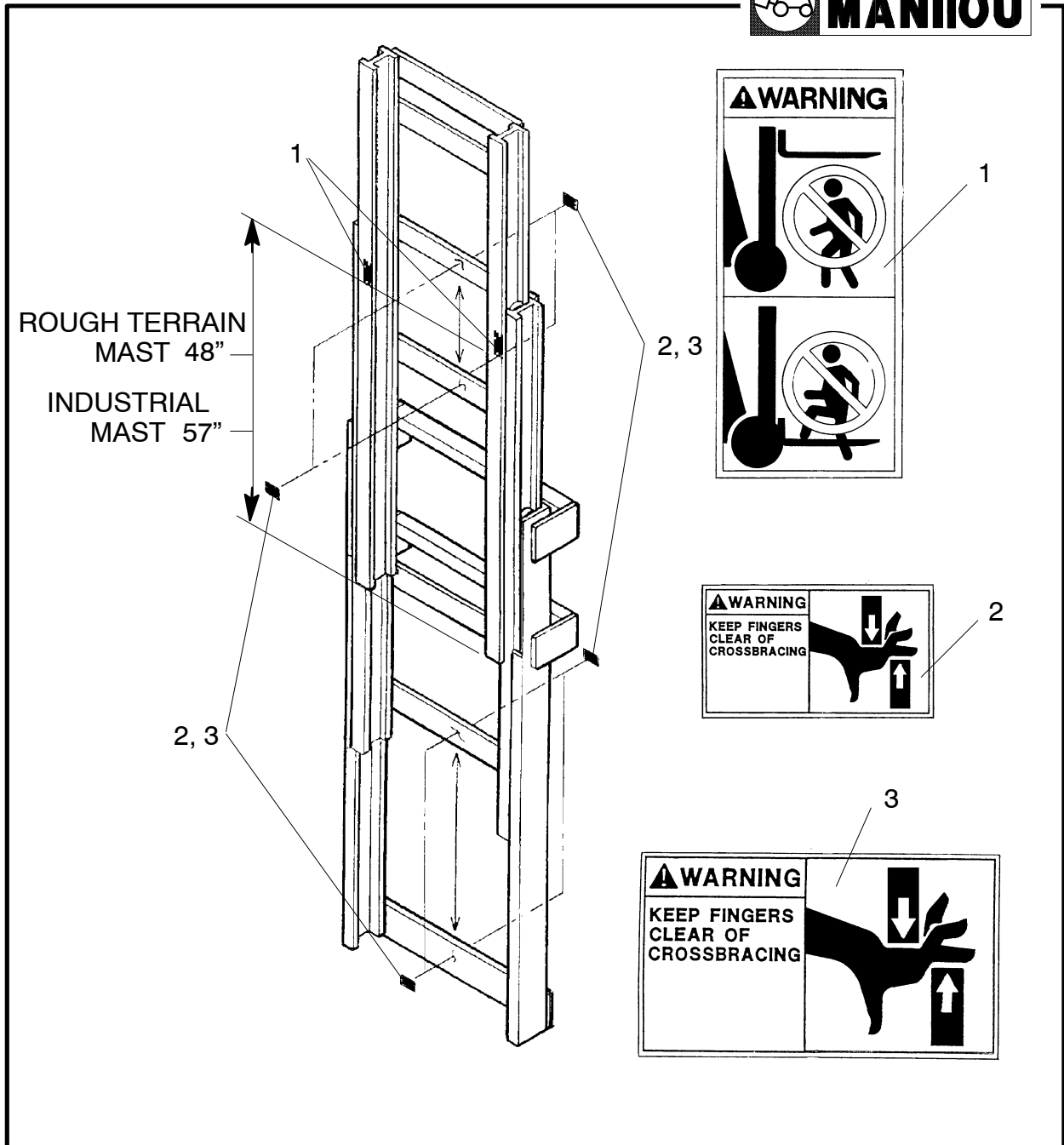


ITEM	PART NUMBER	DESCRIPTION	QTY	MODEL
1	R21725	Carriage Weldment	1	K7595
2	R22	Shim	A/R	
3*	R2	Roller	4	
4**	R1	Roller	4	
5	K97535	Ring, Snap	4	
6	R3561	Shaft, Eccentric	2	
7	R3564	Bolt. Lock	2	

* Also available for replacement of R2 Roller is a 0.015" Over-Sized Roller, Order Part No. R446.

** Also available for replacement of R1 Roller is a 0.015" Over-Sized Roller, Order Part No. R442.

DECALS



ITEM	PART NUMBER	DESCRIPTION	QTY	MODEL
1	426641	Decal, "Fork Safety"	2	ALL
2	426642	Decal, "Pinch Point" (Small)	A/R	
3	426643	Decal, "Pinch Point" (Large)	A/R	

PARTS INDEX

PART NO., PAGE

B

B2236-1, 11
B3698-21, 11
B531, 7
B760-, 11, 13

K

K108-12, 11
K108-8, 13
K20346, 11
K20392, 7
K33797, 9
K33849, 5, 11
K34806, 11
K34809, 7
K44736, 7
K52-12, 11
K52-8, 13
K62-12, 11
K62-12-14, 5
K66-12, 11
K71-8, 13
K72-10-10-12, 11
K72-12, 11
K72016, 9
K87914, 7
K914, 5
K97535, 14, 15
K97541, 9

K97545, 11

R

R1, 14, 15
R10328, 7
R10720, 9
R10722, 9
R10756, 13
R10757, 13
R12256, 11
R12257, 5, 11
R14625-, 5
R14635-, 5
R17236, 11
R17256-1, 13
R1811, 11
R186, 9
R189-3, 9
R19002, 13
R19418, 11
R2, 3, 14, 15
R21705-, 3
R21715-, 3
R21720-2, 3
R21720-4, 3
R21721, 11
R21722, 11
R21725, 14
R21750, 11
R21763, 3
R22, 3, 14, 15
R2211-6, 7
R2211-7, 5

R22340, 15
R2362, 11, 13
R2551, 5
R2552, 5
R32, 9
R3561, 14, 15
R3564, 14, 15
R5138, 7
R6502, 11
R7215-, 5
R7332, 11, 13
R7402, 5
R7404, 5
R7406, 5
R7409, 5
R7443, 5
R7502, 7
R7505K, 5
R7506, 5
R7514, 7
R7519, 7
R7520-, 7
R7520K, 7
R7521-20, 7
R7522, 7
R7524, 7
R7525-, 7
R7528, 7
R7530-, 7
R8540-6, 11
R9481-, 9
R9482, 9
R9483, 9
R9698-2, 11